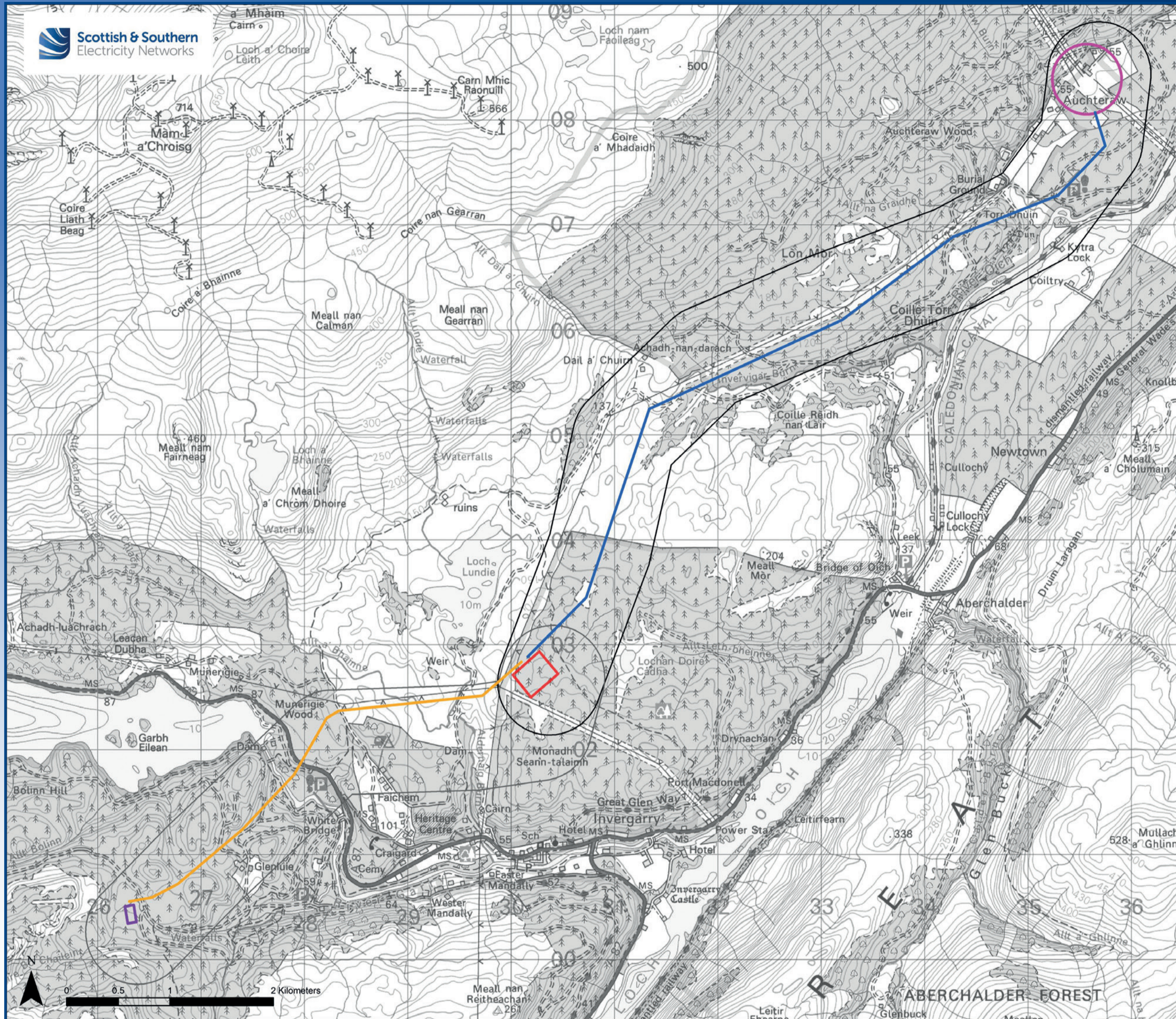


Fig 5 Preferred Alignment



Legend

- Preferred Route - Coire Glas to Loch Lundie
- Preferred Route - Loch Lundie to Fort Augustus
- Existing Fort Augustus Substation
- Loch Lundie 400kV Preferred Substation Site
- Coire Glas 400kV Switching Station
- Preferred Alignment Coire Glas to Loch Lundie
- Preferred Alignment Loch Lundie to Fort Augustus