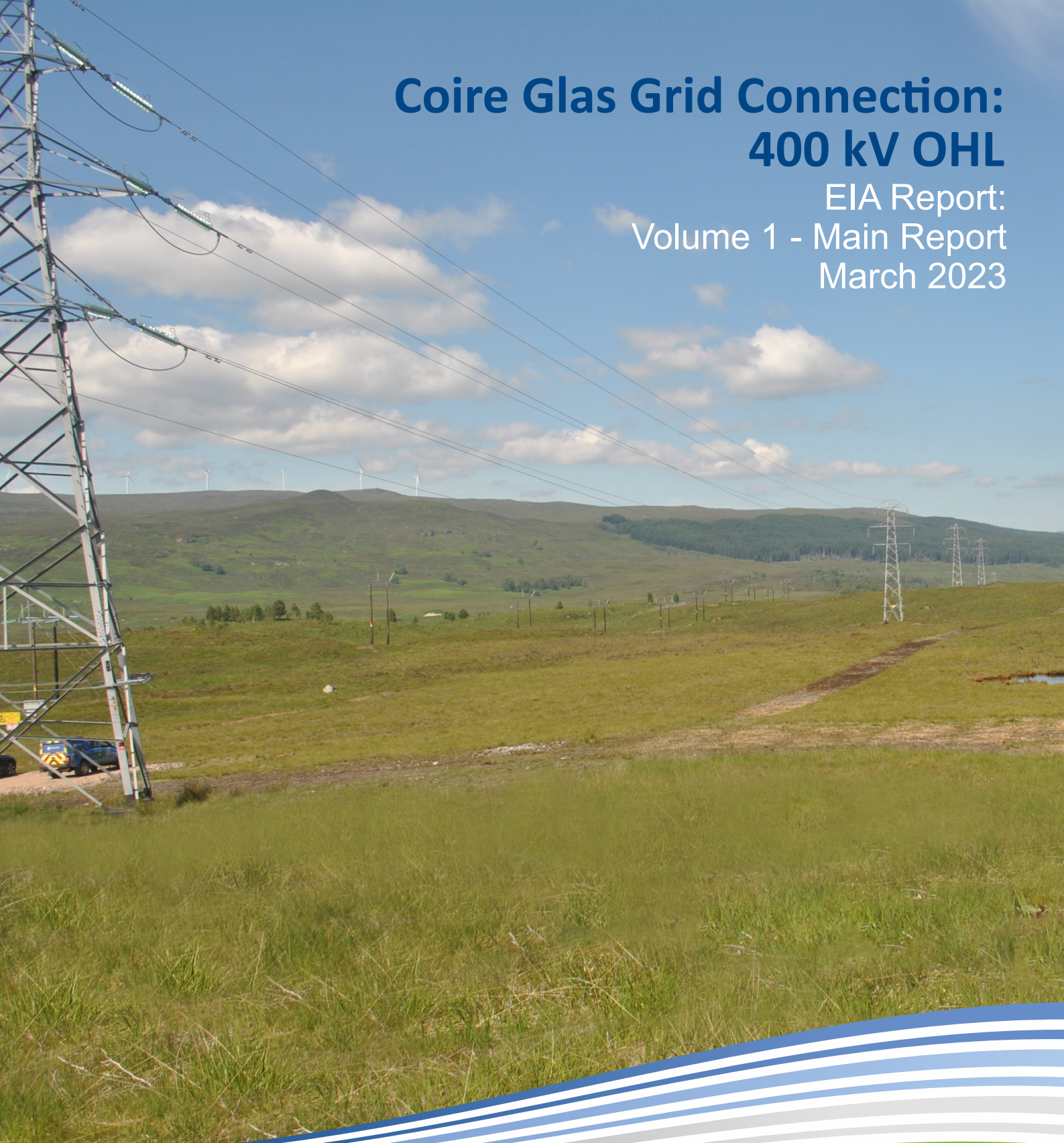


# Coire Glas Grid Connection: 400 kV OHL

EIA Report:  
Volume 1 - Main Report  
March 2023



**Scottish & Southern**  
Electricity Networks

TRANSMISSION



## **VOLUME 1: MAIN REPORT**

### **CONTENTS**

**Glossary and Abbreviations**

**Chapter 1: Introduction and Background**

**Chapter 2: The Routeing Process and Alternatives**

**Chapter 3: Project Description**

**Chapter 4: EIA Process and Methodology**

**Chapter 5: Scoping and Consultation**

**Chapter 6: Planning and Energy Policy Context**

**Chapter 7: Landscape and Visual**

**Chapter 8: Terrestrial Ecology**

**Chapter 9: Ornithology**

**Chapter 10: Geology, Soils and Water**

**Chapter 11: Cultural Heritage**

**Chapter 12: Traffic and Transport**

**Chapter 13: Noise**

**Chapter 14: Forestry**

**Chapter 15: Socio-economics, Recreation and Tourism**

## GLOSSARY AND ABBREVIATIONS

400 kV	400 kilovolt operating voltage electrical circuit
Applicant (the Applicant)	Scottish Hydro Electric Transmission plc who, operating and known as Scottish and Southern Electricity Networks Transmission (SSEN Transmission), own, operate and develop the high voltage electricity transmission system in the north of Scotland an remote islands
Associated Works	Other associated works for which separate consent under section 57(2) of the Town and Country Planning (Scotland) Act 1997 would be sought by the Applicant.
AIL	Abnormal Indivisible Load
AOD	Above Ordnance Datum
AGER	Advisory Group on Economic Recovery
AQMA	Air Quality Management Area
ATV	All-Terrain Vehicle
AWI	Ancient Woodland Inventory
AADT	Annual Average Daily Traffic
ACoW	Archaeological Clerk of Works
ACIfA	Associate of the Chartered Institute for Archaeologists
ATC	Automatic Traffic Counter
BGN	Background Noise
BoP	Balance of Plant
BoCC	Birds of Conservation Concern
BGS	British Geological Survey
BTL	Inventory Historic Battlefield
BTO	British Trust for Ornithology
CA	Conservation Area
CAR	Controlled Activities Regulations, also known as The Water Environment (Controlled Activities) (Scotland) Regulations 2011 (and amendments), apply regulatory control over activities which may affect Scotland's water environment.
CAPEX	Capital Expenditure
CCUS	Carbon Capture Utilisations and Storage
CEMP	Construction Environmental Management Plan
CIfA	Chartered Institute for Archaeologists
CIEEM	Chartered Institute of Ecology and Environmental Management
CGHPSL	Coire Glas Hydro Pumped Storage Ltd
CIRIA	Construction Industry Research and Information Association

CNIA	Construction Noise Impact Assessment
CNMP	Construction Noise Management Plan
Coire Glas Grid Connection Project	The Proposed Development, in combination with the Associated Works, form what is referred to as the Coire Glas Grid Connection Project
COWRP	Scottish Governments' Policy on Control of Woodland Removal
CTMP	Construction Traffic Management Plan
dB	Decibel
DEFRA	Department for Environment, Food and Rural Affairs
DfT	Department for Transport
DWP	Department for Work and Pensions
DMRB	Design Manual for Roads and Bridges
DSRL	Digital Single Lens Reflex camera
DTM	Digital Terrain Model
DWPA	Drinking Water Protection Area
ECoW	Ecological Clerk of Works
EIA	Environmental Impact Assessment - A formal process set down in The Electricity Works (Environmental Impact Assessment) (Scotland) Regulations 2017 used to systematically identify, predict and assess the likely significant environmental impacts of a proposed project or development.
Environmental Impact Assessment Report	A document reporting the findings of the EIA and produced in accordance with the EIA Regulations
ESQCR	Electricity Safety, Quality and Continuity Regulations, 2002
ESO	Electricity Systems Operator
EMF	Electromagnetic Field
EMI	Electromagnetic Interference
ECU	Energy Consents Unit
EPG	Energy Price Guarantee
EHO	Environmental Health Officer
EIA	Environmental Impact Assessment
EIAR	Environmental Impact Assessment Report
EPZ	Equi-Potential Zones
EC	European Commission
ERLOB	European Red List of Bird Species
EU	European Union
FISA	Forest Industry Safety Accord

FLS	Forestry and Land Scotland
FTE	Full Time Equivalents
GEMPs	General Environmental Management Plans
GIS	Geographic Information System
GNSS	Global Navigation Satellite System
GPS	Global Positioning System
GWP	Global Warming Potential
GBDVS	Great Britain Day Visitor Survey
GBTS	Great Britain Tourism Survey
GVA	Gross Value Added
GWDTE	Groundwater Dependent Terrestrial Ecosystem
GPP	Guidance for Pollution Prevention
GLVIA3	Guidelines for Landscape and Visual Impact Assessment, Third Edition (Landscape Institute and Institute of Environmental Management and Assessment, 2013)
ha	Hectare. An area measuring 10,000 square metres
Heritage asset	A physical element of the historic environment – a building, monument, site, place, area, or landscape identified as having cultural significance.
HEPS	Historic Environment Policy for Scotland
HER	Historic Environment Record
HES	Historic Environment Scotland
HET	Historic Environment Team
HFOV	Horizontal Field of View
HGV	Heavy Goods Vehicle
HIE	Highlands and Islands Enterprise
HMP	Habitat Management Plan
HRA	Habitats Regulations Appraisal
HwLDP	Highland-wide Local Development Plan
IOF	Important Ornithological Feature
IEMA	Institute of Environmental Management and Assessment
IDBR	Inter Departmental Business Register
ICNIRP	International Commission on Non-Ionising Radiation Protection
IUCN	International Union for Conservation of Nature
kV	Kilovolt
LMP	Land Management Plan
LVIA	Landscape and Visual Impact Assessment

LCT	Landscape Character Type
Lights or LGV	Light Goods Vehicles
LOD	Limit of Deviation
LB	Listed Building
LBAP	Local Biodiversity Action Plan
LDP	Local Development Plan
LEPO	Long Established of Plantation Origin - a category of woodland under the Ancient Woodland Inventory
LTFP	Long Term Forest Plan
MW	Megawatt
MCIfA	Member of the Chartered Institute for Archaeologists
MAGIC	Multi-Agency Geographic Information for the Countryside
Mitigation	Term used to identify measures that are identified to prevent, reduce or remedy any potentially significant adverse environmental effects, beyond that already taken into account as normal good practice
NCR	National Cycle Route
ND	National Development
NGR	National Grid Reference
NHZ	National Heritage Zone
NPerF	National Performance Framework
NPF4	National Planning Framework 4
NRPB	National Radiological Protection Board
NRHE	National Record of the Historic Environment
NRTF	National Road Traffic Forecast
NO2	Nitrogen Dioxide
NSR	Noise Sensitive Receptor
NTS	Non Technical Summary
OAMP	Outdoor Access Management Plan
OC	Operational Corridor
OHL	Overhead Line. An electric line installed above ground, usually supported by lattice steel towers or wooden poles.
ONS	Office for National Statistics
OPEX	Operational Expenditure
OS	Ordnance Survey
OWESG	Onshore Wind Energy Supplementary Guidance (THC, 2017)
PAN	Planning Advice Note

PAN	Planning Application Notice
PAWS	Plantations on Ancient Woodland Sites
PLHRA	Peat Landslide and Hazard Risk Assessment
PMP	Peat Management Plan
PPG	Pollution Prevention Guidance Notes
Proposed Development	The Proposed Development comprises approximately 13 km of new 400 kV double circuit steel structure OHL, and ancillary works. The Proposed Development also comprises rationalisation parts of the existing overhead line infrastructure in the area, requiring a 0.7 km temporary diversion to enable the continued operation of the existing OHL.
PWS	Private Water Supply
PYE	Person Years Employment
RAG	Red-Amber-Green
RO	Registered Organisation
Routeing	The work undertaken which leads to the selection of a proposed alignment, capable of being taken forward into the consenting process under Section 37 of the Electricity Act 1989
RSPB	Royal Society for the Protection of Birds
SAC	Special Area of Conservation. An area designated under the EC Habitats Directive to ensure that rare, endangered or vulnerable habitats or species of community interest are either maintained at or restored to a favourable conservation status
Section 37	An application for development consent under Section 37 of the Electricity Act 1989
SEPA	Scottish Environment Protection Agency
SM	Scheduled Monument
SMC	Scheduled Monument Consent
SIMD	Scottish Index of Multiple Deprivation
SLA	Special Landscape Area
SNH	Scottish Natural Heritage, former name of the public body NatureScot which changed in August 2020
SPA	Special Protection Area – designated under Directive 2009/147/EC on the Conservation of Wild Birds (the Birds Directive) to protect important bird habitats.
SPP (Planning)	Scottish Planning Policy
SPP (Ecology)	Species Protection Plans
SSEN Transmission	Scottish and Southern Electricity Networks Transmission
SSSI	Site of Special Scientific Interest. Areas of national importance. The aim of the SSSI network is to maintain an adequate representation of all natural and semi-natural habitats and native species across Britain.

SuDS	Sustainable Drainage System
TN	Target Note
THC	The Highland Council
TS	Transport Scotland
UGC	Underground Cable
UHF	Ultra High Frequency
UKBAP	United Kingdom Biodiversity Action Plan
UKFS	United Kingdom Forestry Standard
VHF	Very High Frequency
VILN	VisitInvernessLochNess
VL	Visualisation Location
WEWS	Water Environment and Water Services
WSI	Written Scheme of Investigation
ZTV	Zone of Theoretical Visibility – the computer-generated theoretical visibility of an object in the landscape