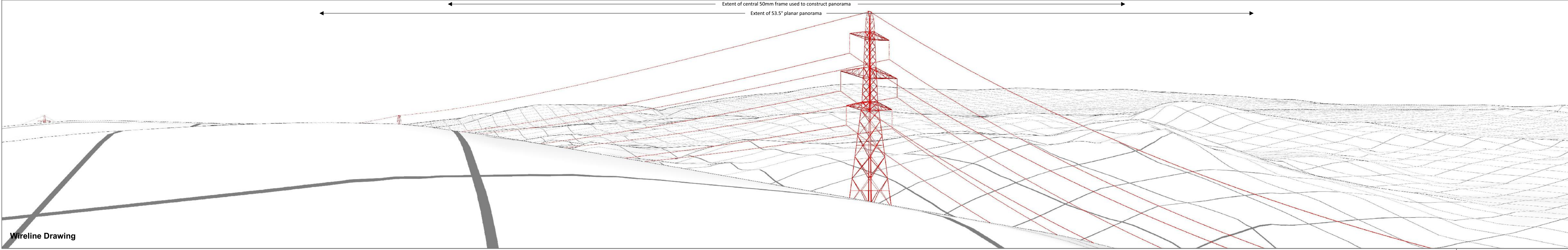
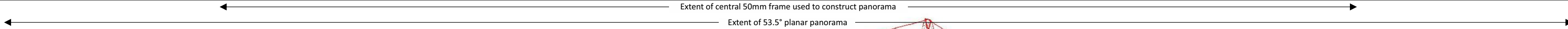




Baseline Photograph

This image provides landscape and visual context only



Wireline Drawing

Coire Glas Grid Connecton Project
 Figure 11.3.1 - Cultural Heritage Viewpoint 1: Torr Dhuin Scheduled Monument

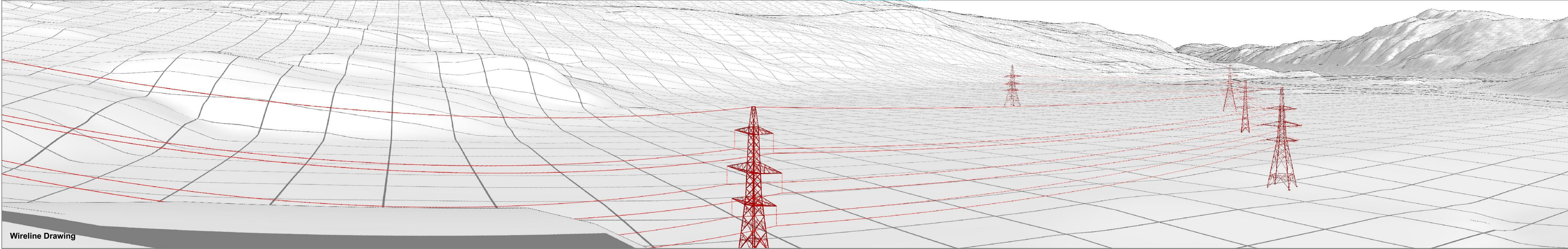
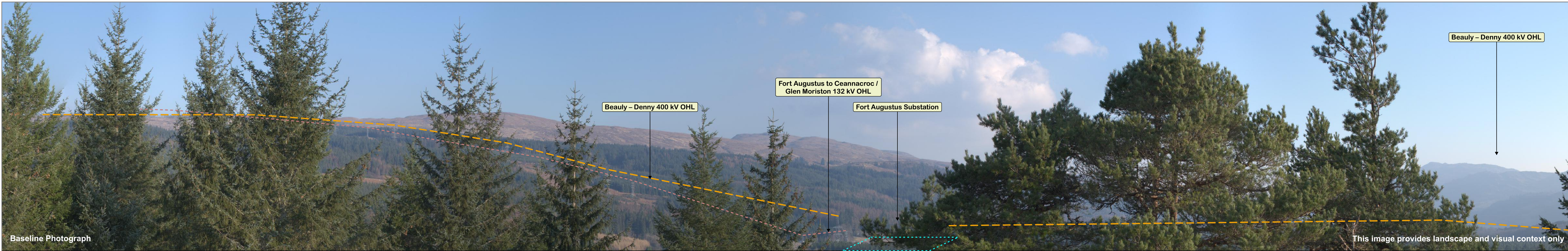
The existing 132 kV Fort Augustus to Fort William overhead line has been removed from the photomontage as it is anticipated that this overhead line will be decommissioned and dismantled once the new 400 kV overhead line is installed for the Coire Glas Grid Connection
 Note: A pitch angle of +5° has been applied to the wireline and photographs on this figure.

OS reference: 234860 E 806936 N
 Ground level: 110.9 m AOD
 Direction of view: 292°
 Nearest tower: 247.3 m

Camera:
 Lens:
 Camera height:
 Date and time:

Sony ILCE-7RM3
 50mm (Sony DT50mm f/1.2))
 1.5m AGL
 08/03/2022 09:09

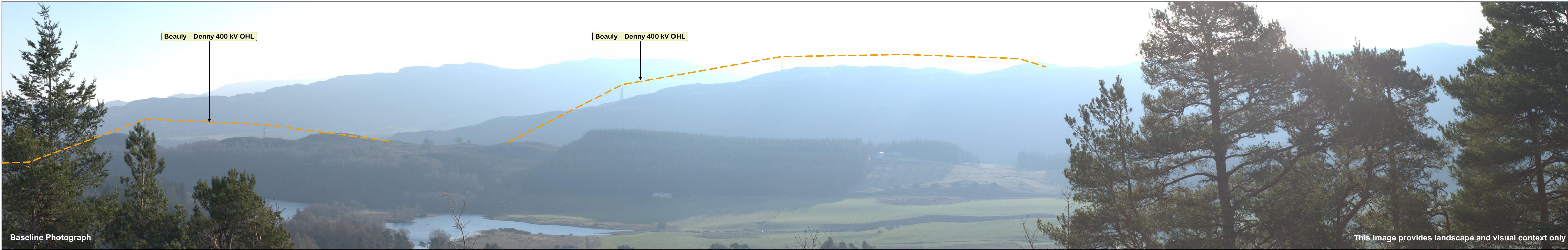
Horizontal field of view: 90° (cylindrical projection)
 Principal distance: 522 mm



Coire Glas Grid Connecton Project
 Figure 11.3.2 - Cultural Heritage Viewpoint 1: Torr Dhuin Scheduled Monument

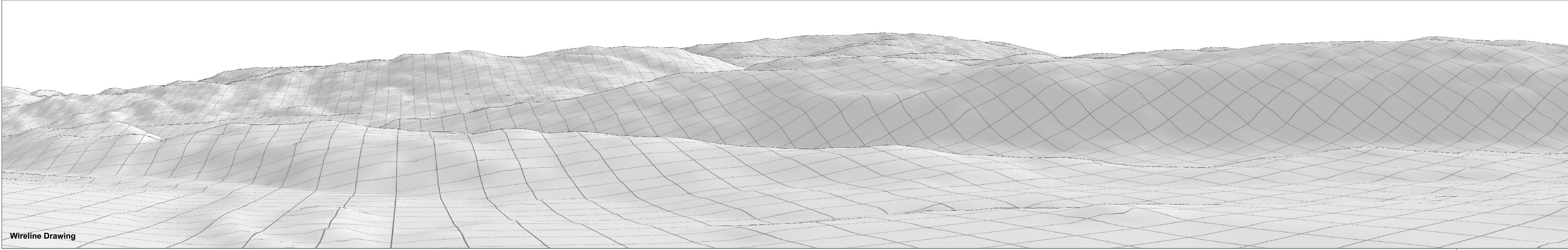
The existing 132 kV Fort Augustus to Fort William overhead line has been removed from the photomontage as it is anticipated that this overhead line will be decommissioned and dismantled once the new 400 kV overhead line is installed for the Coire Glas Grid Connection
 Note: A pitch angle of -4° has been applied to the wireline and photographs on this figure.

OS reference:	234860 E 806936 N	Camera:	Sony ILCE-7RM3	Horizontal field of view:	90° (cylindrical projection)
Ground level:	110.9 m AOD	Lens:	50mm (Sony DT50mm f/1.2)	Principal distance:	522 mm
Direction of view:	22°	Camera height:	1.5m AGL		
Nearest tower:	247.3 m	Date and time:	08/03/2022 09:09		



Baseline Photograph

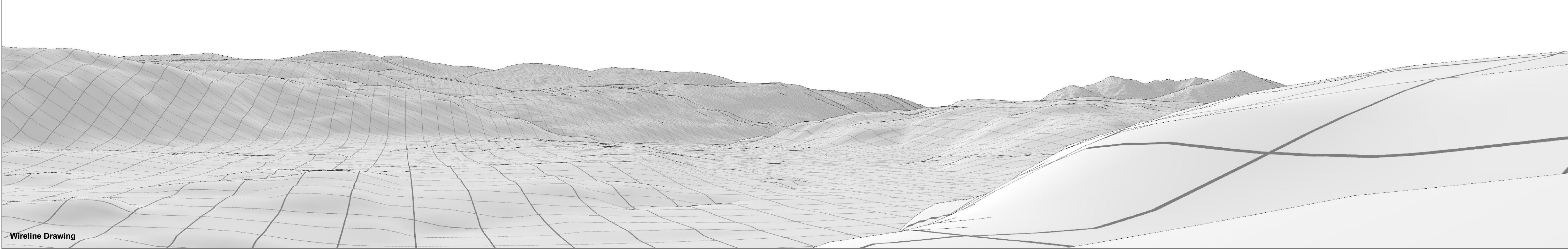
This image provides landscape and visual context only



Wireline Drawing

Coire Glas Grid Connecton Project
 Figure 11.3.3 - Cultural Heritage Viewpoint 1: Torr Dhuin Scheduled Monument

OS reference:	234860 E 806936 N	Camera:	Sony ILCE-7RM3	Horizontal field of view:	90° (cylindrical projection)
Ground level:	110.9 m AOD	Lens:	50mm (Sony DT50mm f/1.2)	Principal distance:	522 mm
Direction of view:	112°	Camera height:	1.5m AGL		
Nearest tower:	247.3 m	Date and time:	08/03/2022 09:09		

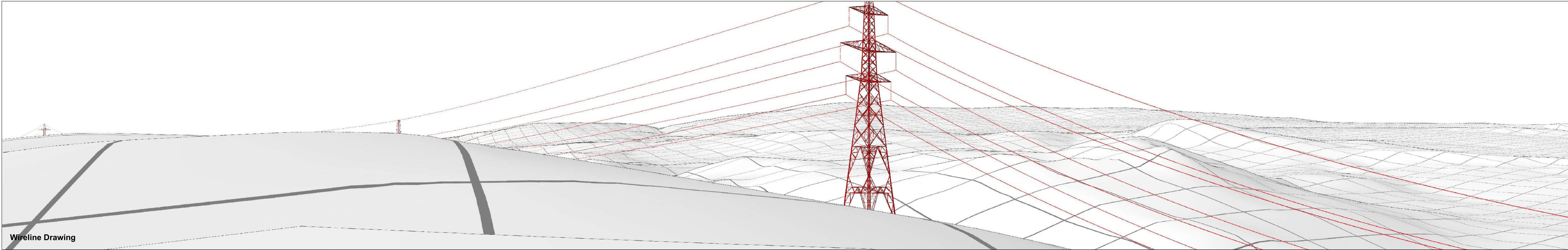


Coire Glas Grid Connecton Project
 Figure 11.3.4 - Cultural Heritage Viewpoint 1: Torr Dhuin Scheduled Monument

OS reference:	234860 E 806936 N	Camera:	Sony ILCE-7RM3	Horizontal field of view:	90° (cylindrical projection)
Ground level:	110.9 m AOD	Lens:	50mm (Sony DT50mm f/1.2)	Principal distance:	522 mm
Direction of view:	202°	Camera height:	1.5m AGL		
Nearest tower:	247.3 m	Date and time:	08/03/2022 09:09		

Drawing No. - 121012-D-EIA-11.3.4-1.0.0 Date - 28.03.2023





Wireline Drawing



Photomontage

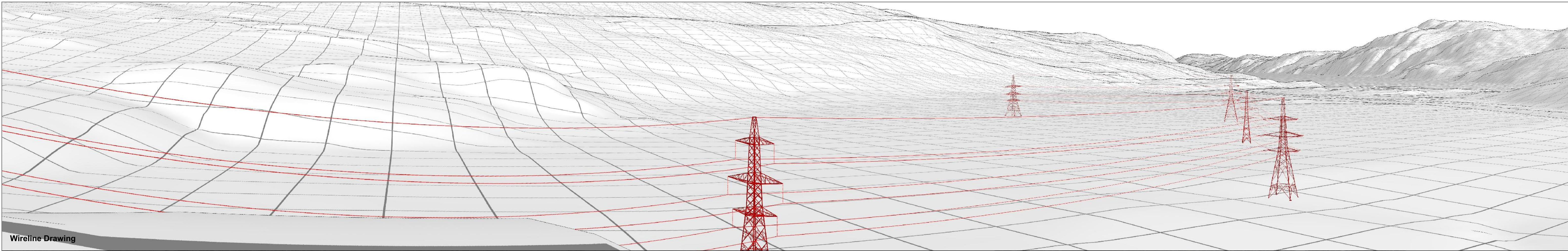
Coire Glas Grid Connecton Project
 Figure 11.3.5 - Cultural Heritage Viewpoint 1: Torr Dhuin Scheduled Monument - Photomontage

The existing 132 kV Fort Augustus to Fort William overhead line has been removed from the photomontage as it is anticipated that this overhead line will be decommissioned and dismantled once the new 400 kV overhead line is installed for the Coire Glas Grid Connection
 Note: A pitch angle of +5° has been applied to the wireline and photographs on this figure.

OS reference: 234860 E 806936 N
 Ground level: 110.9 m AOD
 Direction of view: 292°
 Nearest tower: 247.3 m

Camera: Sony ILCE-7RM3
 Lens: 50mm (Sony DT50mm f/1.2)
 Camera height: 1.5m AGL
 Date and time: 08/03/2022 09:09

Horizontal field of view: 90° (cylindrical projection)
 Principal distance: 522 mm



Coire Glas Grid Connecton Project
 Figure 11.3.6 - Cultural Heritage Viewpoint 1: Torr Dhuin Scheduled Monument - Photomontage

The existing 132 kV Fort Augustus to Fort William overhead line has been removed from the photomontage as it is anticipated that this overhead line will be decommissioned and dismantled once the new 400 kV overhead line is installed for the Coire Glas Grid Connection
 Note: A pitch angle of -4° has been applied to the wireline and photographs on this figure.

OS reference: 234860 E 806936 N
 Ground level: 110.9 m AOD
 Direction of view: 22°
 Nearest tower: 247.3 m

Camera:
 Lens:
 Camera height:
 Date and time:

Sony ILCE-7RM3
 50mm (Sony DT50mm f/1.2))
 1.5m AGL
 08/03/2022 09:09

Horizontal field of view: 90° (cylindrical projection)
 Principal distance: 522 mm