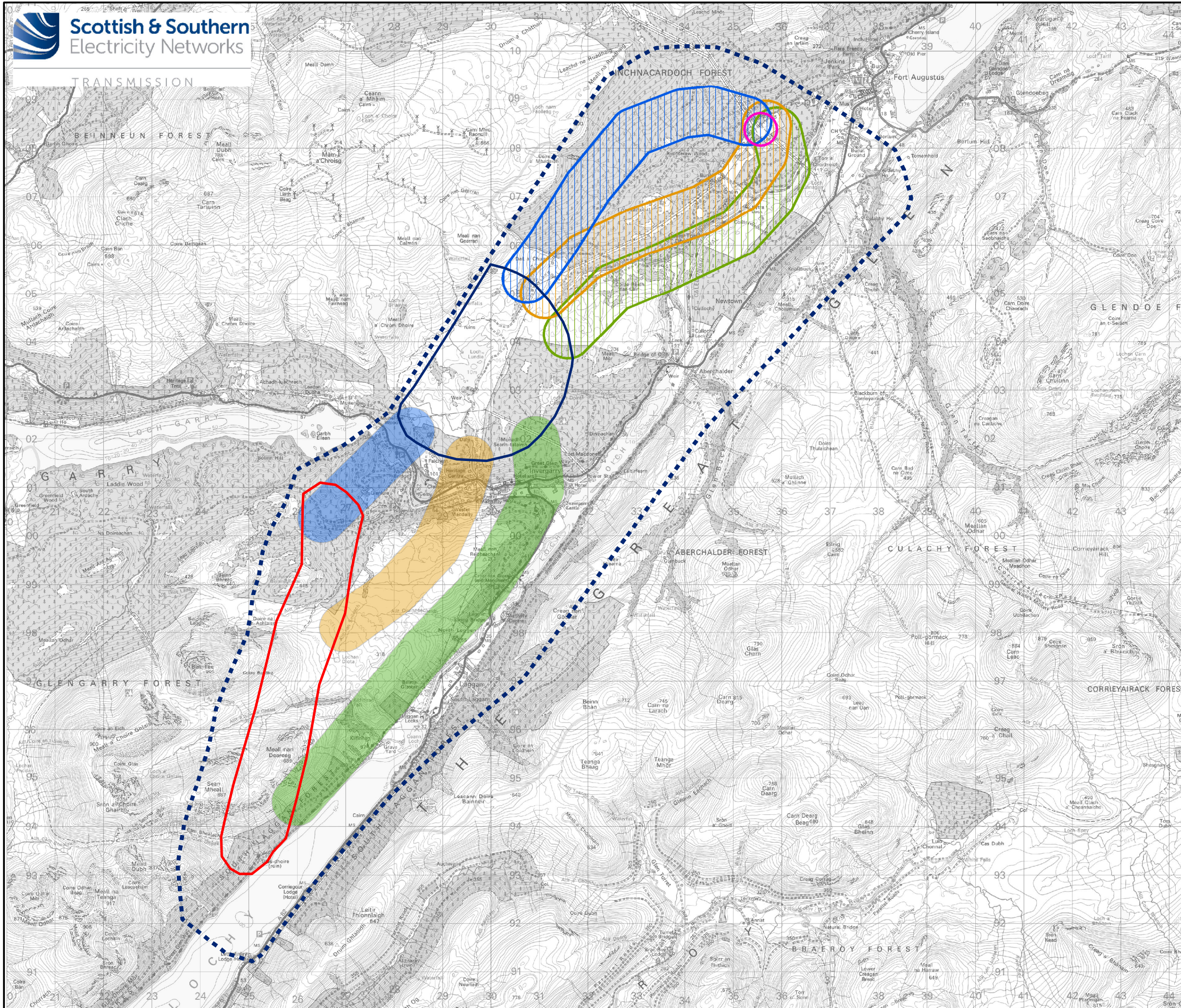







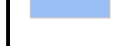

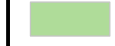


TRANSMISSION

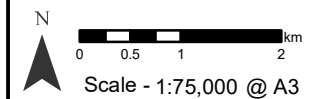


Legend

-  Study Corridor
-  Existing Fort Augustus Substation
-  Search Area - Proposed Coire Glas Switching Station
-  Search Area - Proposed Loch Lundie Substation

Route Options

-  Coire Glas Switching Station (CG) - Loch Lundie Substation (LL) Route Option 1 (CG-LL1)
-  CG - LL Route Option 2 (CG-LL2)
-  CG - LL Route Option 3 (CG-LL3)
-  LL - Fort Augustus Substation (FA) Route Option 1 (LL-FA1)
-  LL - FA Route Option 2 (LL-FA2)
-  LL - FA Route Option 3 (LL-FA3)



Reproduced by permission of Ordnance Survey on behalf of HMSO.
Crown copyright and database right 2023 all rights reserved.
Ordnance Survey Licence number EL273236.

Project: Coire Glas Grid Connection Project –
400 kV OHL EIA Report

Title: Figure 2.1 - Route Options Overview

Drawn by: KM Date: 31/03/2023

Drawing: 121012-EIA-D2.1-1.0.0