



Photomontage

Figure 7.11d - Visualisation Location 1: Auchterawe Road

OS reference: 234865 E 807668 N Nearest proposed tower: 513.9m Ground level: 63.9m AOD Direction of view: 200°  
Camera: Sony ILCE 7RM3 Focal length: 50mm vertical (27°) x 28mm horizontal (65.5°) Camera height: 1.5m Date: 08/03/2022 Time: 08:06  
Drawing No. - 121012-D-LVIA-7.11D-E-1.0.0 Date - 28.03.2023

*The images contained on this page and the following are not representative of scale and distance from the actual viewpoint and shows the proposed development in its wider landscape context only.*





Existing View

Terrain model

OS reference: 234865 E 807668 N Nearest proposed tower: 513.9m Ground level: 63.9m AOD Direction of view: 200°  
Camera: Sony ILCE 7RM3 Focal length: 50mm vertical (27°) x 28mm horizontal (65.5°) Camera height: 1.5m Date: 08/03/2022 Time: 08:06

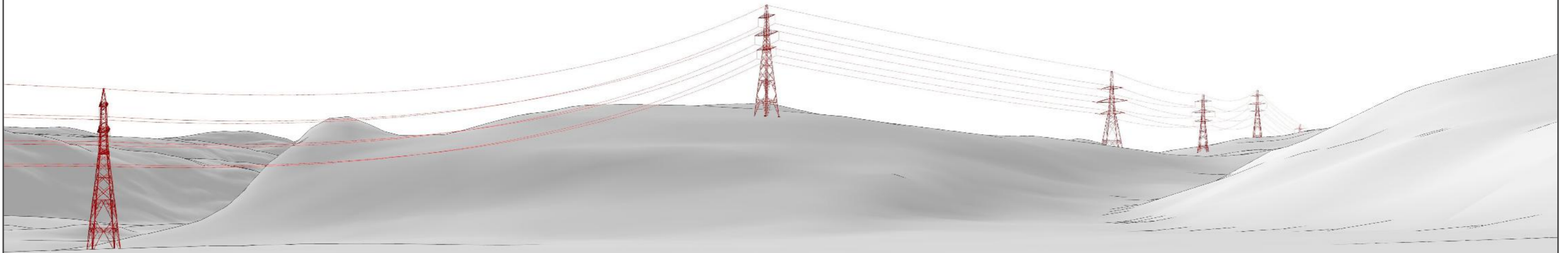


Figure 7.11e - Visualisation Location 1: Auchterawe Road