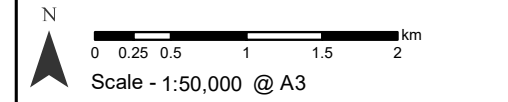


Legend

- 500 m Study Area
- Overhead Line (OHL) Works**
 - Proposed Tower Location
 - Proposed Overhead Line (OHL)
 - Limit of Deviation (LOD) for Proposed OHL (50 m either side of OHL alignment)
- Ancillary Development**
 - Indicative Underground Cable (UGC) Alignment
 - Limit of Deviation (LOD) for Proposed UGC (50 m either side of UGC alignment)
 - Indicative Cable Sealing End Compound
 - New - Temporary Access Tracks
 - New - Permanent Access Tracks
- Existing Infrastructure**
 - Stronelairg Wind Farm Turbine
 - Stronelairg Wind Farm Access Track
 - Existing Access Tracks
- Consented Wind Farm Infrastructure**
 - Melgarve Substation
 - Cloiche Turbine
 - Cloiche Access Track
 - Cloiche Substation
- Proposed Wind Farm Infrastructure**
 - Dell Turbine
 - Dell Access Track
 - Dell Substation
- Designated Sites**
 - Special Area of Conservation (SAC)
 - Special Protection Area (SPA)
 - Site of Special Scientific Interest (SSSI)
- Hydrology**
 - SEPA CAR Authorised Site
 - Watercourse Crossing
 - Watercourse (1:10,000)
 - Waterbody (1:10,000)
 - Drinking Water Protected Area
 - Future River 2080 Flood Extent
- SEPA Nested Waterbody Catchments**
 - Glen Doe Reservoir
 - River Foyers
 - River Spey
 - River Tarff / Allt Lagan a'Bhainne
 - SEPA Nested Waterbody Sub Catchments



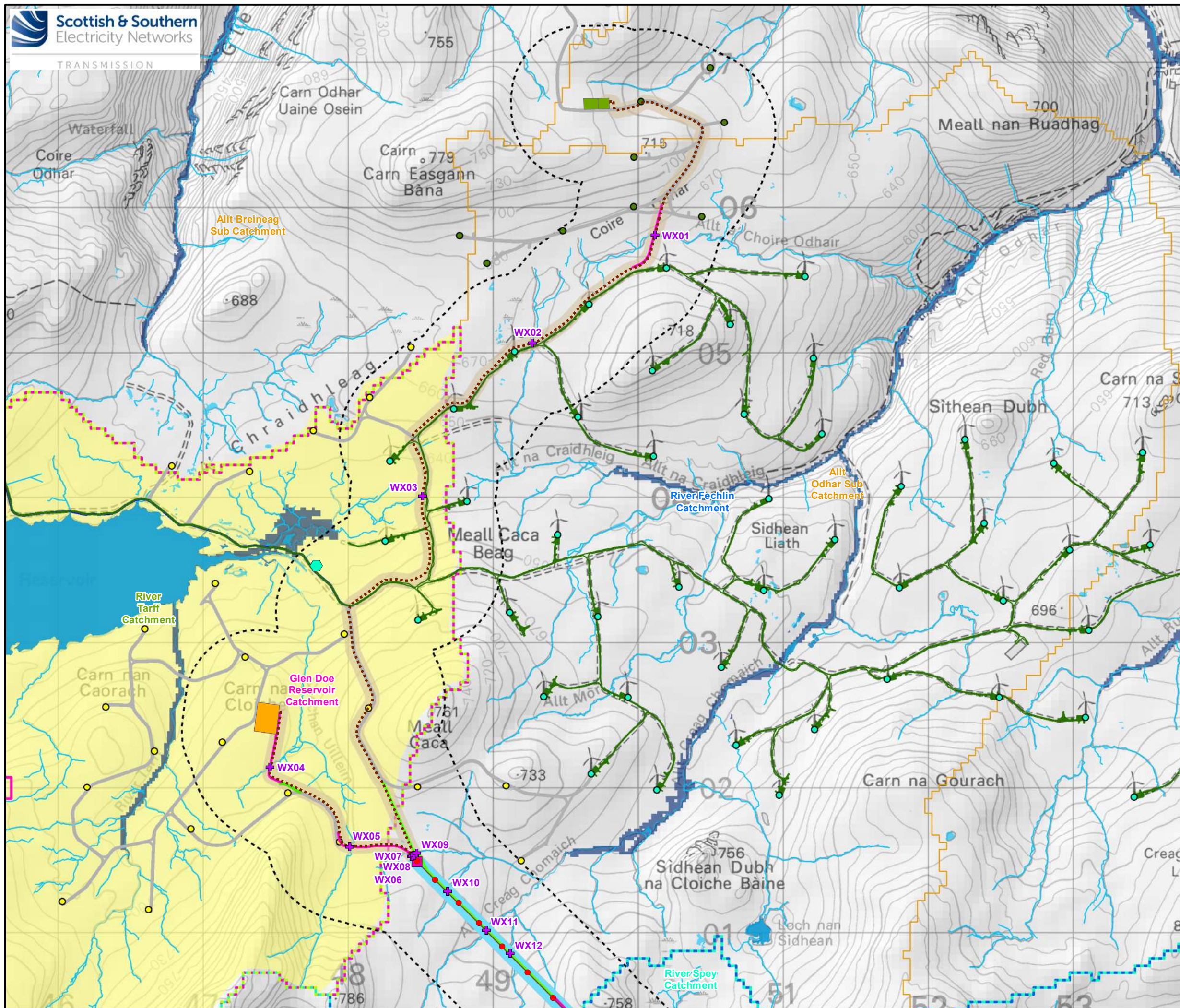
SLR

Project: Melgarve Cluster Project: Environmental Impact Assessment

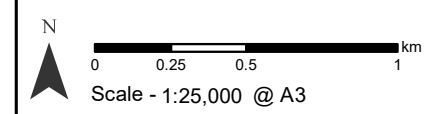
Title: Figure 10.1a - Overview Local Hydrology

Drawn by: FG 22/03/2024

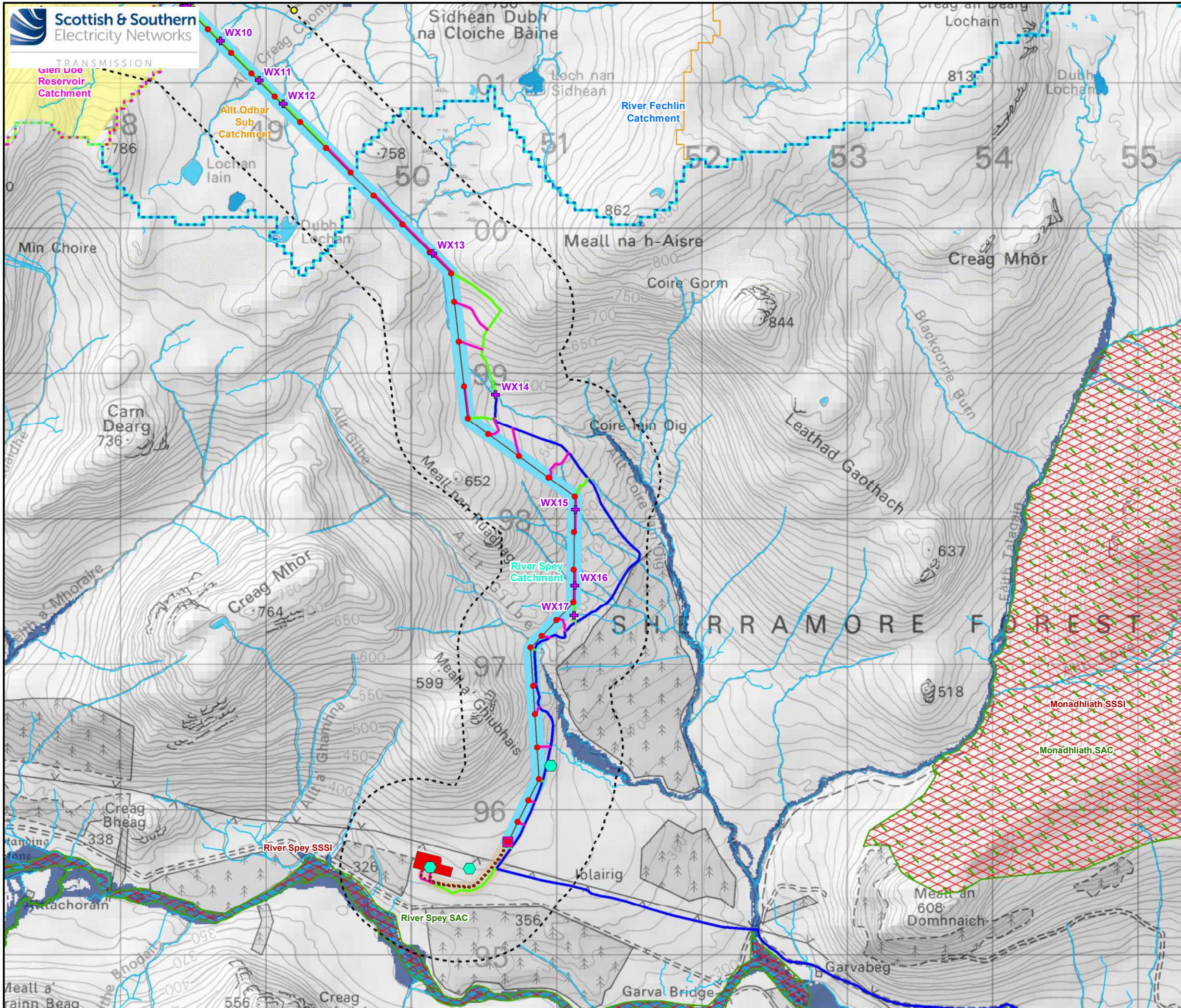
Drawing: 04707.00029.0037.1



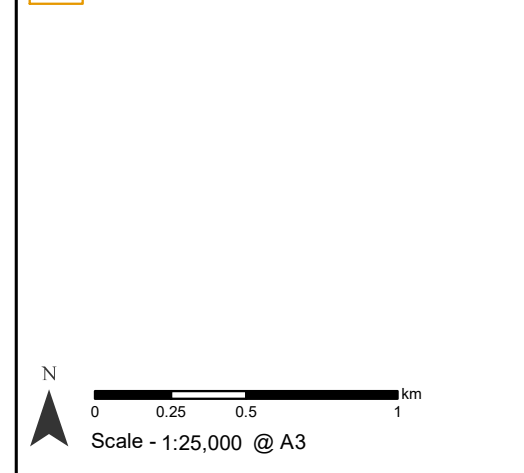
- Legend**
- 500 m Study Area
 - Overhead Line (OHL) Works**
 - Proposed Tower Location
 - Proposed Overhead Line (OHL)
 - Limit of Deviation (LOD) for Proposed OHL (50 m either side of OHL alignment)
 - Ancillary Development**
 - Indicative Underground Cable (UGC) Alignment
 - Limit of Deviation (LOD) for Proposed UGC (50 m either side of UGC alignment)
 - Indicative Cable Sealing End Compound
 - New - Temporary Access Tracks
 - New - Permanent Access Tracks
 - Existing Infrastructure**
 - Stronelairg Wind Farm Turbine
 - Stronelairg Wind Farm Access Track
 - Existing Access Tracks
 - Consented Wind Farm Infrastructure**
 - Cloiche Turbine
 - Cloiche Access Track
 - Cloiche Substation
 - Proposed Wind Farm Infrastructure**
 - Dell Turbine
 - Dell Access Track
 - Dell Substation
 - Designated Sites**
 - Special Area of Conservation (SAC)
 - Special Protection Area (SPA)
 - Site of Special Scientific Interest (SSSI)
 - Hydrology**
 - SEPA CAR Authorised Site
 - Watercourse Crossing
 - Watercourse (1:10,000)
 - Waterbody (1:10,000)
 - Drinking Water Protected Area
 - Future River 2080 Flood Extent
 - SEPA Nested Waterbody Catchments**
 - Glen Doe Reservoir
 - River Foyers
 - River Spey
 - River Tarff / Allt Lagan a'Bhainne
 - SEPA Nested Waterbody Sub Catchments



Project:	Melgarve Cluster Project: Environmental Impact Assessment
Title:	Figure 10.1b - Northern Half Local Hydrology
Drawn by:	FG 22/03/2024
Drawing:	04707.00029.0037.1



- ### Legend
- 500 m Study Area**
 - Overhead Line (OHL) Works**
 - Proposed Tower Location
 - Proposed Overhead Line (OHL)
 - Limit of Deviation (LOD) for Proposed OHL (50 m either side of OHL alignment)
 - Ancillary Development**
 - Indicative Underground Cable (UGC) Alignment
 - Limit of Deviation (LOD) for Proposed UGC (50 m either side of UGC alignment)
 - Indicative Cable Sealing End Compound
 - New - Temporary Access Tracks
 - New - Permanent Access Tracks
 - Existing Access Tracks
 - Melgarve Substation
 - Consented Wind Farm Infrastructure**
 - Cloiche Turbine
 - Cloiche Access Track
 - Designated Sites**
 - Special Area of Conservation (SAC)
 - Special Protection Area (SPA)
 - Site of Special Scientific Interest (SSSI)
 - Hydrology**
 - SEPA CAR Authorised Site
 - Watercourse Crossing
 - Watercourse (1:10,000)
 - Waterbody (1:10,000)
 - Drinking Water Protected Area
 - Future River 2080 Flood Extent
 - SEPA Nested Waterbody Catchments**
 - Glen Doe Reservoir
 - River Foyers
 - River Spey
 - River Tarff / Allt Lagan a'Bhainne
 - SEPA Nested Waterbody Sub Catchments



SLR

Project: Melgarve Cluster Project: Environmental Impact Assessment
 Title: Figure 10.1c - Southern Half Local Hydrology
 Drawn by: FG 22/03/2024
 Drawing: 04707.00029.0037.1