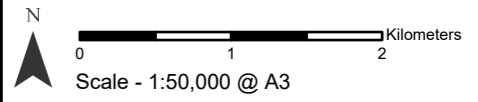
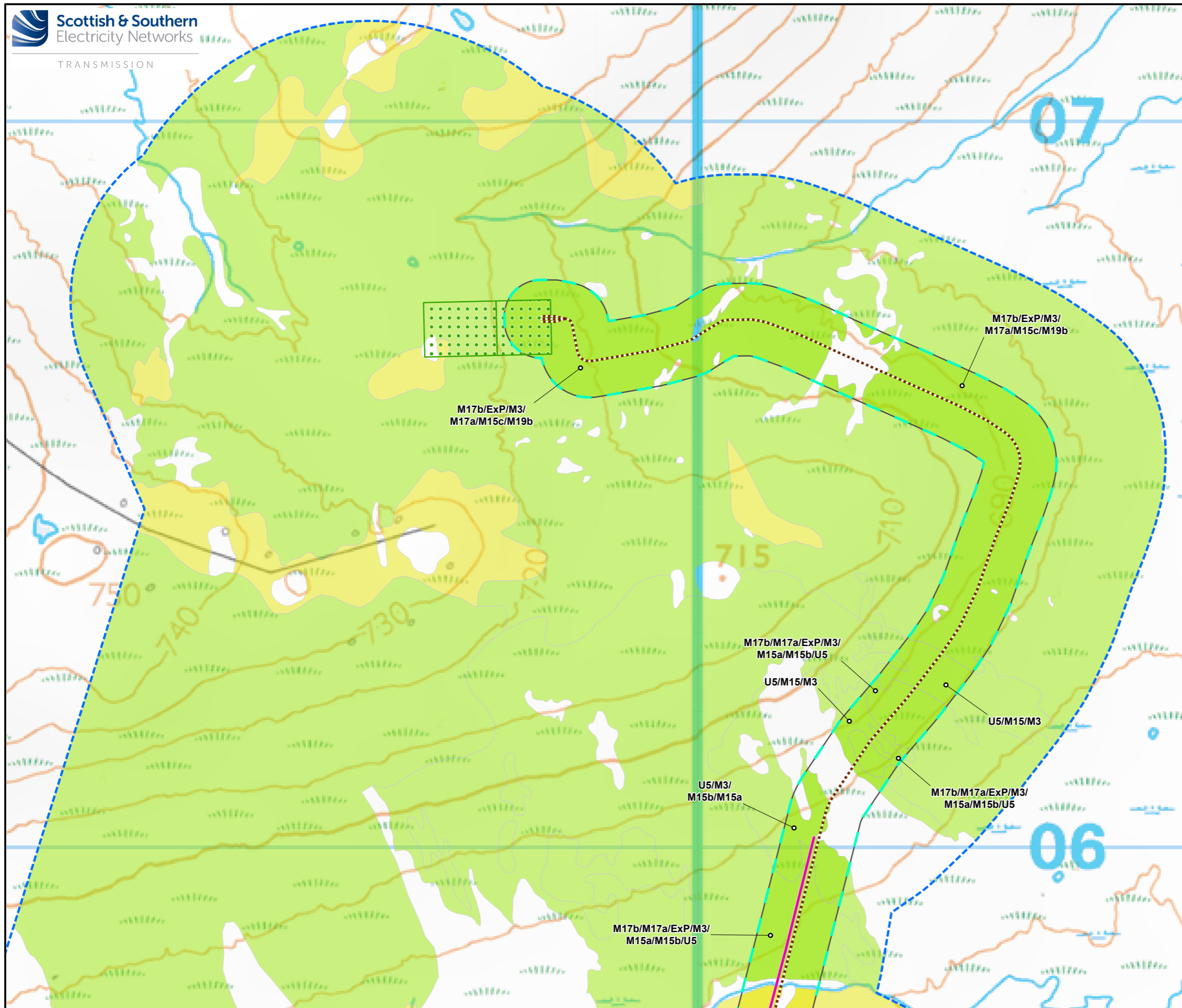


- Legend**
- Overhead Line (OHL) Works**
- Proposed Tower Location
 - Proposed Overhead Line (OHL)
 - Limit of Deviation (LoD) for Proposed OHL (50m either side of OHL alignment)
- Ancillary Development**
- Indicative Cable Sealing End Compound Outline
 - Indicative Underground Cable (UGC) Alignment
 - LoD for Proposed UGC (50m either side of UGC alignment)
 - New - Temporary Access
 - New - Permanent Access Tracks
- Existing Infrastructure**
- Stronelairg Turbines
 - Stronelairg Wind Farm Access Tracks
 - Existing Access Tracks
 - Melgarve Substation
- Consented Wind Farm Infrastructure**
- Cloiche Turbines
 - Cloiche Access Tracks
 - Cloiche Substation
- Proposed Infrastructure**
- Dell Turbines
 - Dell Access
 - Dell Substation
- Potential Ground Water Dependent Terrestrial Ecosystems (GWLTE) Survey Area**
- GWLTE Survey Area
 - Section



Project:	Melgarve Cluster Project - Environmental Impact Assessment
Title:	Figure 8.4a - Overview Potential Groundwater Dependent Terrestrial Ecosystems (GWLTE) Survey Area and Survey Results
Drawn by:	LNF
Date:	22/03/2024
Drawing:	Figure 8.4



Legend

Ancillary Development

- Indicative Underground Cable (UGC) Alignment
- New - Temporary Access
- LoD for Proposed UGC (50m either side of UGC alignment)

Proposed Infrastructure

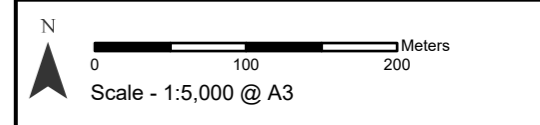
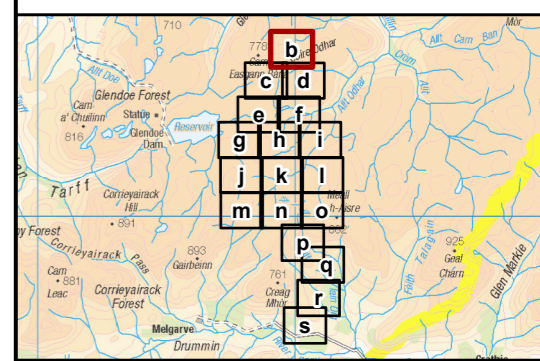
- Dell Station

Potential Groundwater Dependent Terrestrial Ecosystems (GWDTEs) Survey Area and Results

- GWDTe Survey Area
- GWDTe Study Area

Potential GWDTe

- Moderately Dominant
- Moderately Sub-dominant

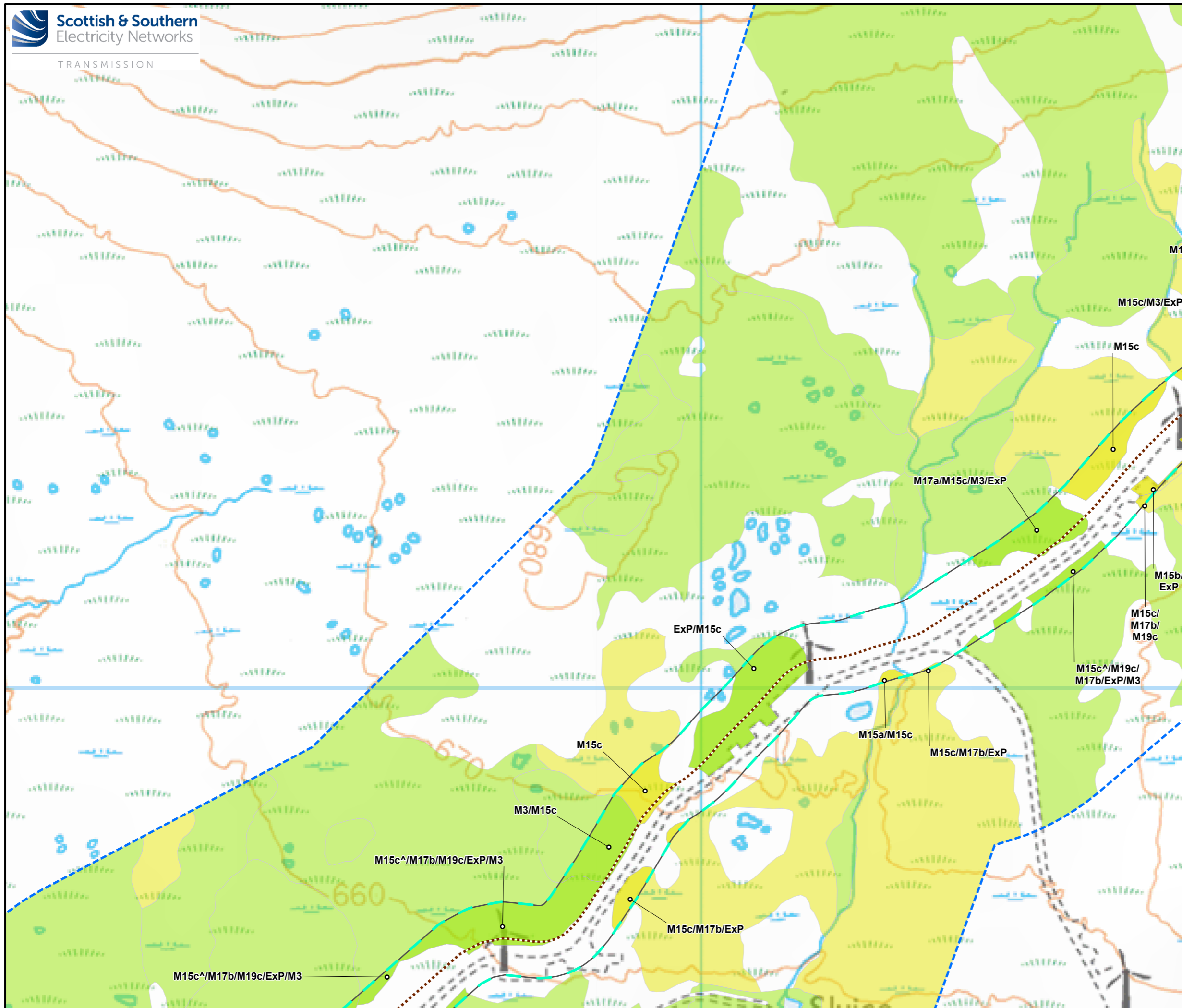


Project: Melgarve Cluster Project - Environmental Impact Assessment

Title: Figure 8.4b- Potential Groundwater Dependent Terrestrial Ecosystems (GWDTEs) Survey Area and Results

Drawn by: LNF Date: 22/03/2024

Drawing: Figure 8.4b



Legend

Ancillary Development

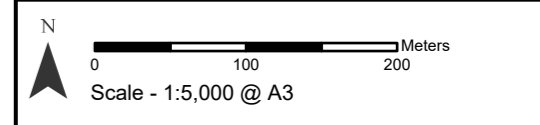
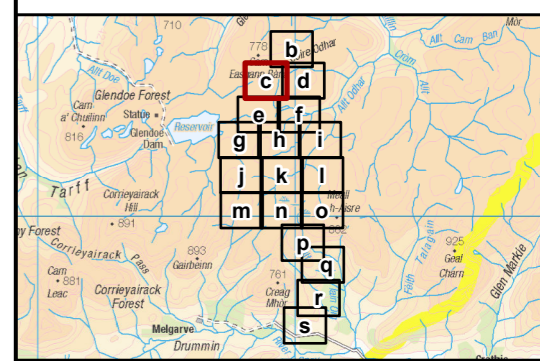
- Indicative Underground Cable (UGC) Alignment
- LoD for Proposed UGC (50m either side of UGC alignment)

Potential Groundwater Dependent Terrestrial Ecosystems (GWDTEs) Survey Area and Results

- GWDTe Survey Area
- GWDTe Study Area

Potential GWDTe

- Moderately Dominant
- Moderately Sub-dominant



Project: Melgarve Cluster Project - Environmental Impact Assessment

Title: Figure 8.4c- Potential Groundwater Dependent Terrestrial Ecosystems (GWDTEs) Survey Area and Results

Drawn by: LNF Date: 22/03/2024

Drawing: Figure 8.4c