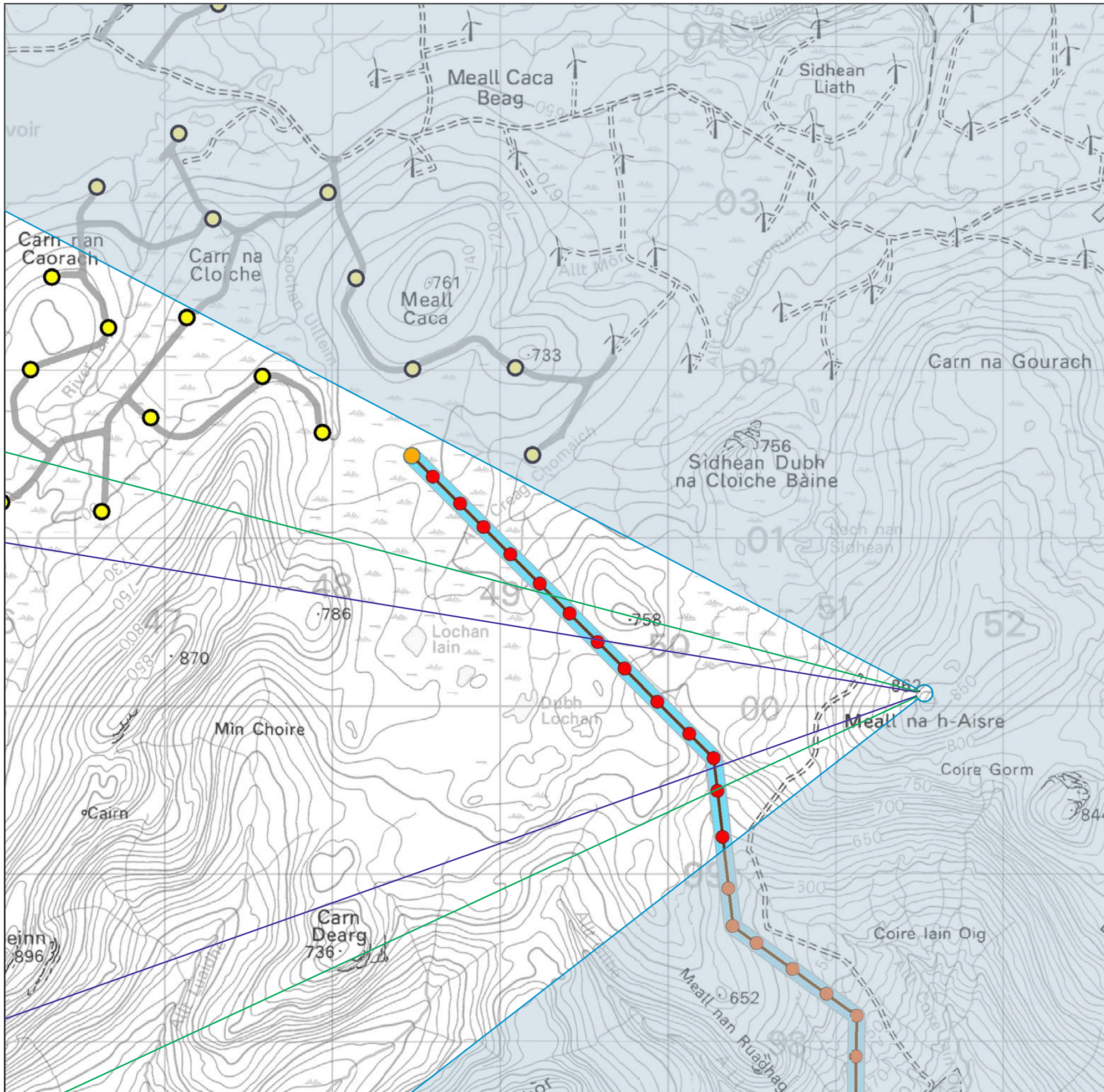


Reproduced by permission of Ordnance Survey on behalf of HMSO. Crown copyright and database right 2024 all rights reserved. Ordnance Survey Licence number EL273236



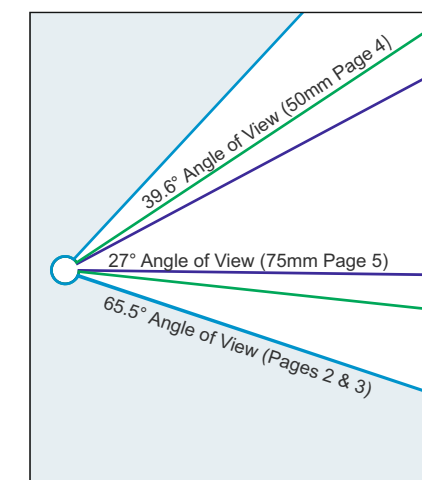
# Melgarve Cluster Project: Environmental Impact Assessment



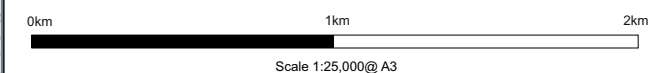
## Volume 3b - Visualisations for The Highland Council Figure 2a Visualisation location 2 - Meall na h-Aisre

<b>Viewpoint Data</b>	
Grid Reference	E251524, N800047
Elevation	194m AOD
<b>Photograph</b>	
Height above ground	1.5m
Camera and Lens	Sony ILCE-9 with fixed 50mm lens
Date	30/10/2023
Time	13:04
<b>Predicted Visibility, Distance and Direction</b>	
Distance to Nearest Tower	1.30 km
Direction to Nearest Tower	254°

- Legend**
- Indicative Cable Sealing End Compound
  - Cloiche Turbines
  - Proposed Tower Location
  - Proposed Overhead Line (OHL)
  - Melgarve Substation
  - Limit of Deviation (LOD) for Indicative Cable Sealing End Compound
  - LOD for Proposed OHL (50m either side of OHL alignment)



Tripod location





Photomontage

Volume 3b - Visualisations for The Highland Council  
Figure 2b - Visualisation Location 2: Meall na h'Aisre  
- Photomontage - Upon Completion

OS reference: 251524 E 800047 N Distance to proposed Scheme: 1.30 km Ground level: 862m AOD Direction of view: 265°  
Camera: Sony ILCE-9 Focal length: 50mm vertical (27°) x 28mm horizontal (65.5°) Camera height: 1.5m Date: 30/10/2023 Time: 13:04

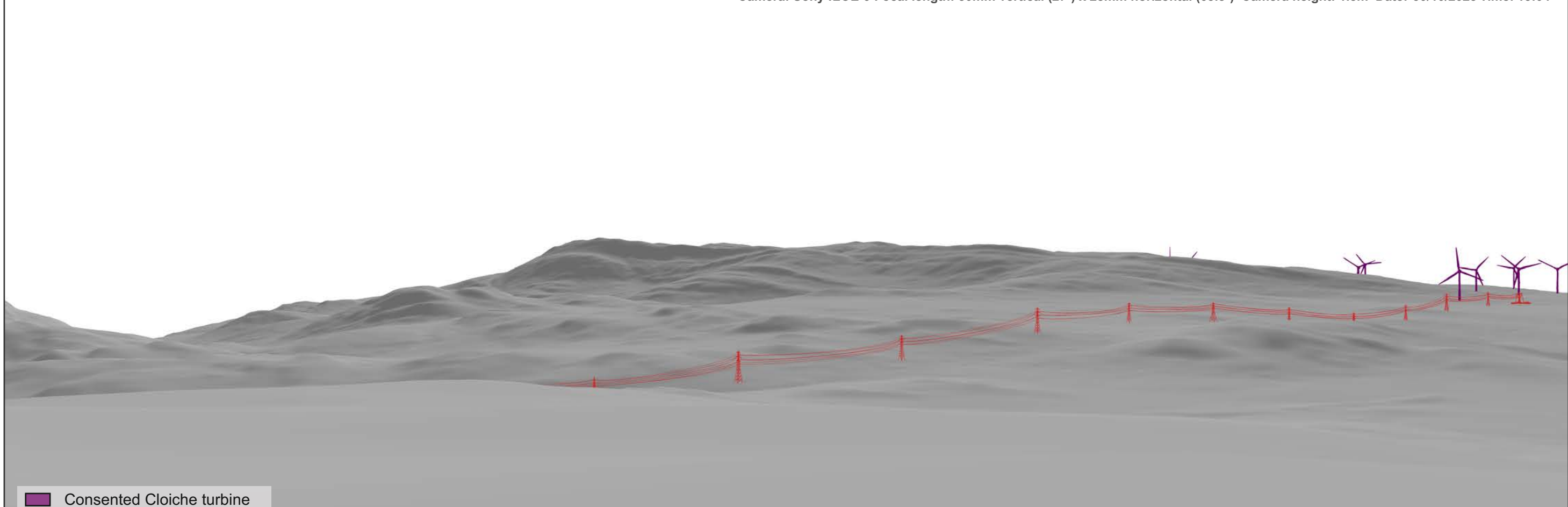
*The images contained on this page and the following are not representative of scale and distance from the actual viewpoint and shows the proposed development in its wider landscape context only.*



Existing View

Terrain model

OS reference: 251524 E 800047 N Distance to proposed Scheme: 1.30 km Ground level: 862m AOD Direction of view: 265°  
Camera: Sony ILCE-9 Focal length: 50mm vertical (27°) x 28mm horizontal (65.5°) Camera height: 1.5m Date: 30/10/2023 Time: 13:04




 Consented Cloiche turbine

Figure 2c - Visualisation Location 2: Meall na h'Aisre - Baseline Photograph & Wireline



Photomontage

**Figure 2d - Visualisation Location 2: Meall na h'Aisre  
- Photomontage - Upon Completion**

When viewed at a comfortable arms length (approx. 500mm), this printed image is representative of our detailed central vision, but is not representative of scale and distance.



Photomontage

**Figure 2e - Visualisation Location 2: Meall na h'Aisre**  
**- Photomontage - Upon Completion**  
This image should be viewed at a comfortable arms length (approx 500mm)