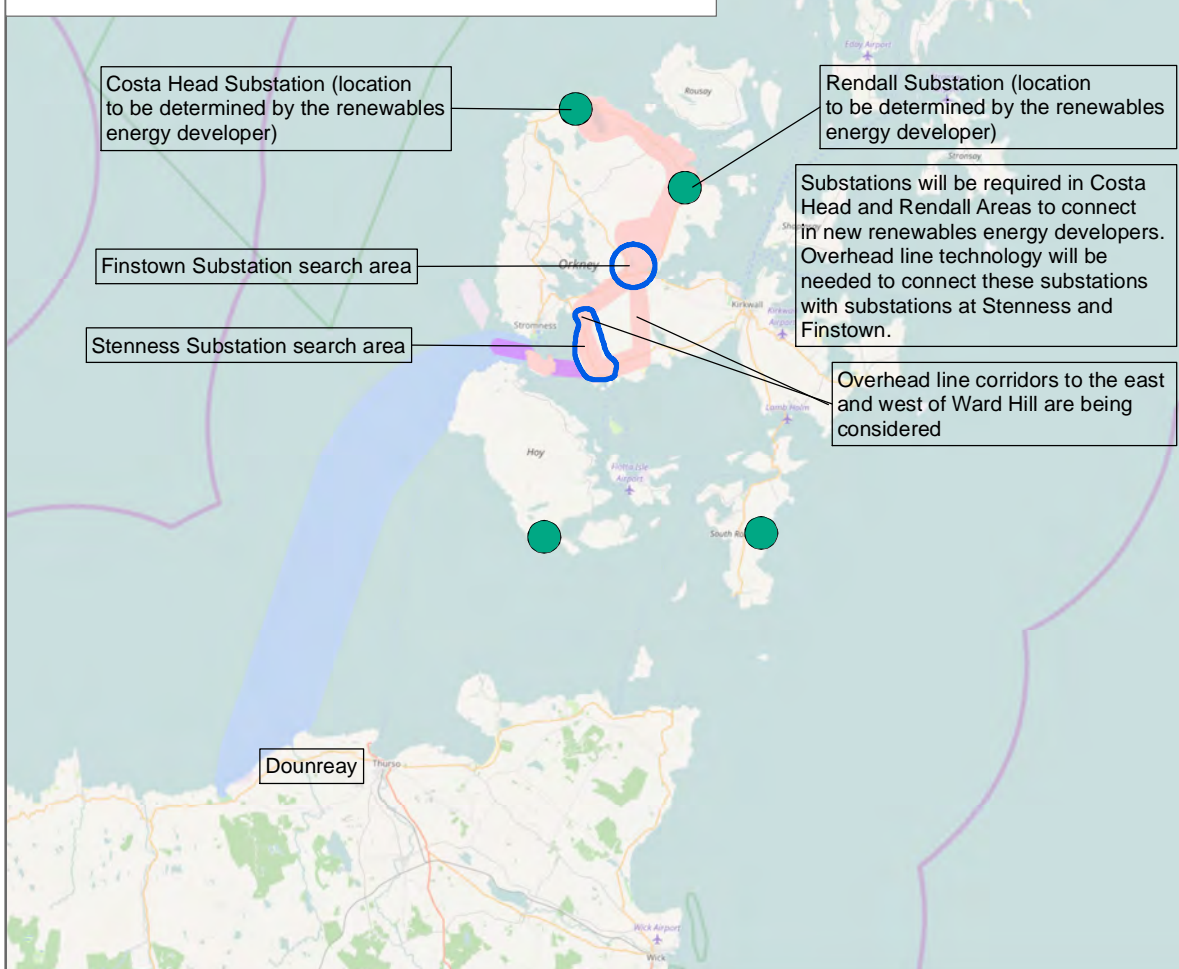
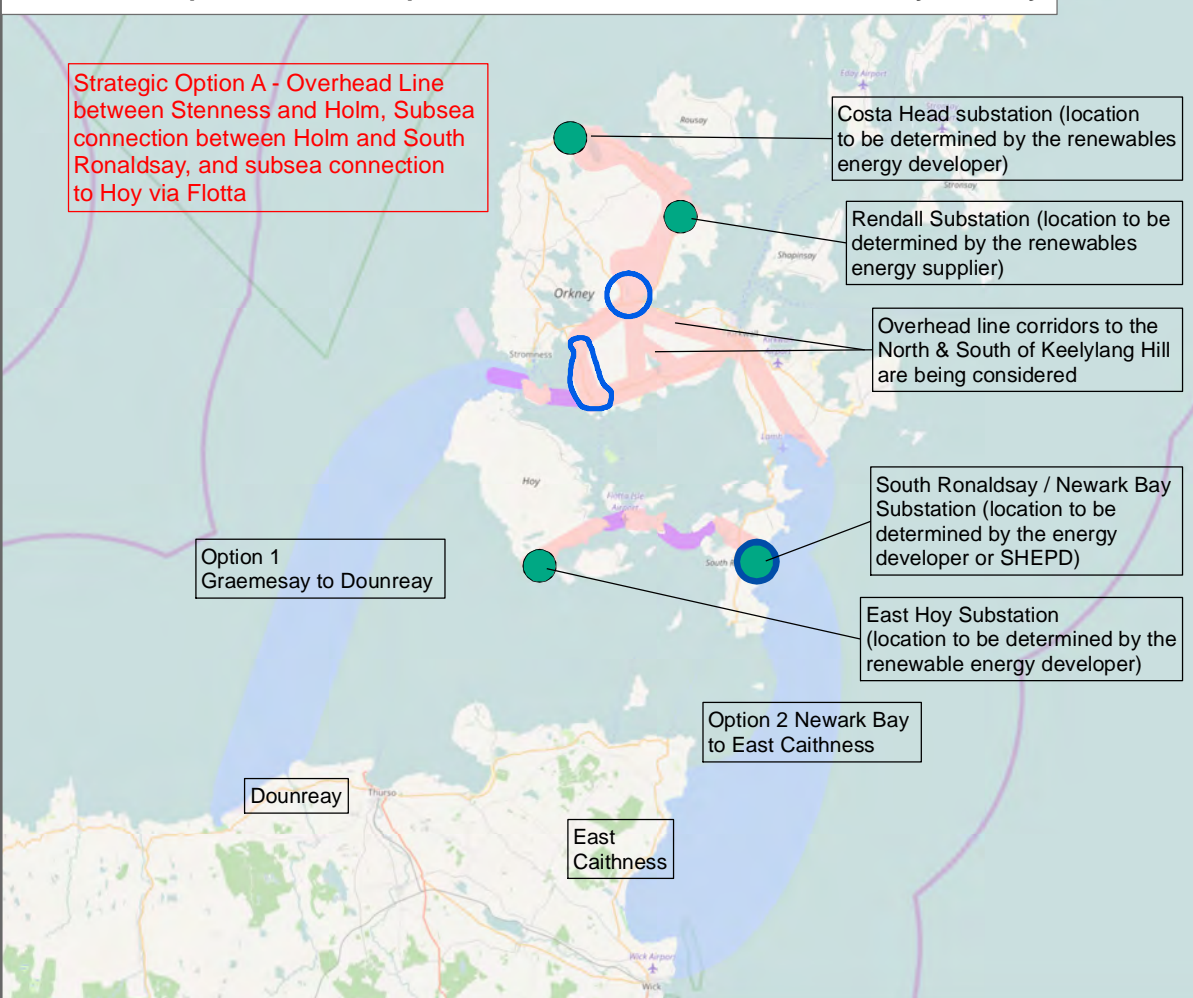


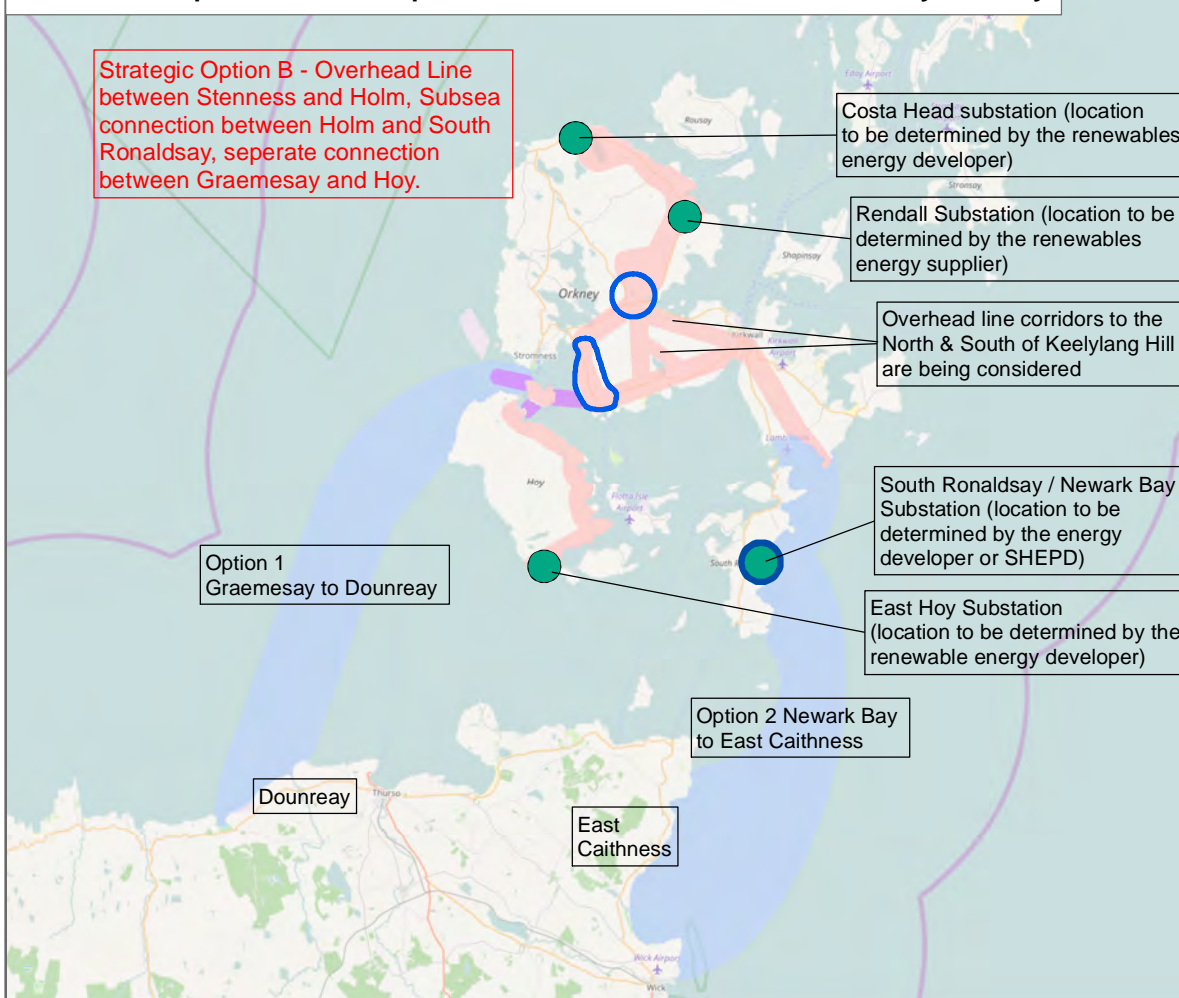
Developer Substation Sites on Mainland Orkney, and Overhead Line Connections between Substations



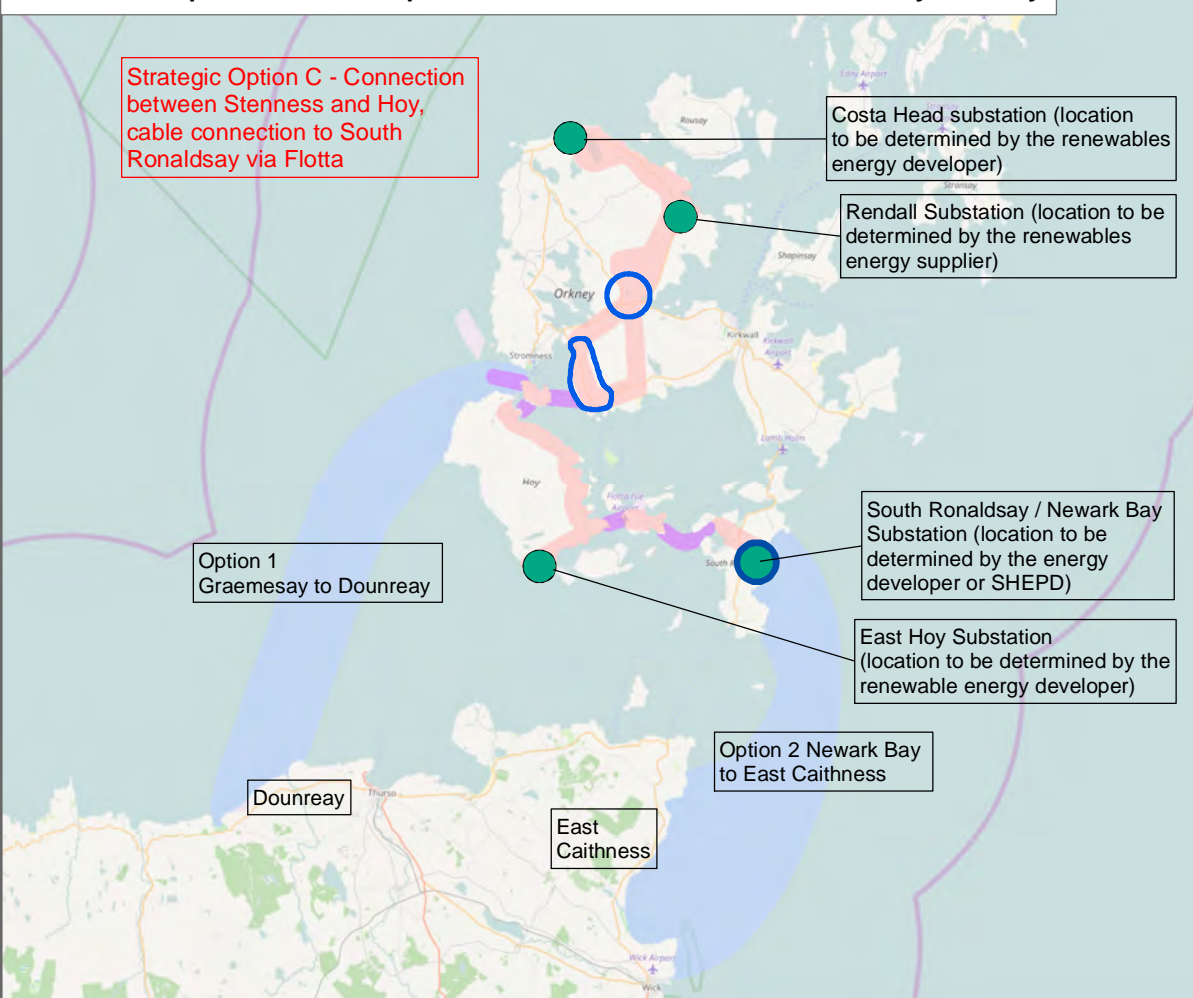
Connection Options for Developer Substation Sites on South Ronaldsay and Hoy



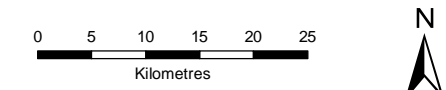
Connection Options for Developer Substation Sites on South Ronaldsay and Hoy



Connection Options for Developer Substation Sites on South Ronaldsay and Hoy



- Substation location to be determined by the developer
- Substation location to be determined by either the developer or SHEPD
- Substation location to be determined by SHEPD
- Indicative horizontal directional drill
- Indicative overhead line corridor
- Indicative marine cable corridor



SCALE: 1:700,000	VERSION: A02
SIZE: A3	DRAWN: AZ
PROJECT: 0348229	CHECKED: KG
DATE: 09/02/2017	APPROVED: WH

Figure 7
Orkney Islands Transmission Reinforcement
- Story Board B



PROJECTION: British National Grid