



This image provides landscape and visual context only

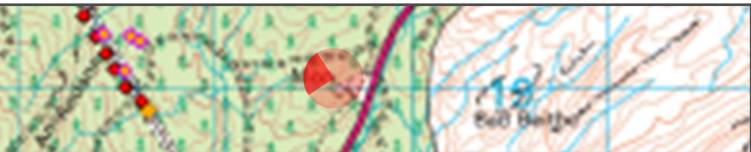
**Figure: 5.7a: Baseline Photograph**  
Viewpoint 1: Neil Munro Commemorative Monument  
**ITE/ITW Connection**



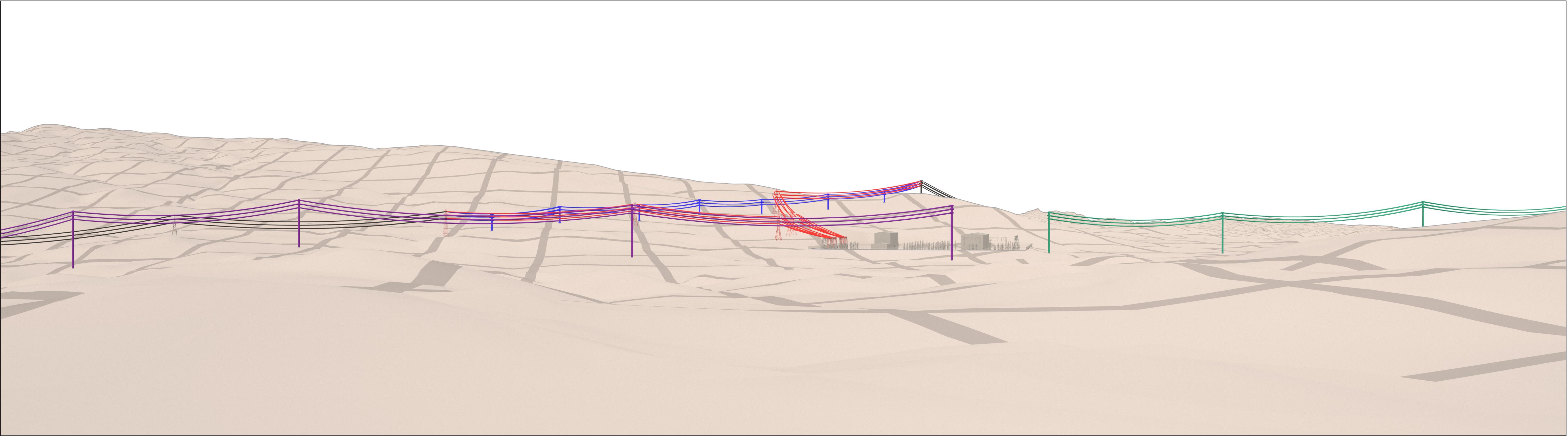
OS reference: 209687 719031  
Eye Level: 229.5m AOD  
Direction of view: West  
Horizontal field of view: (90° cylindrical projection)

Camera: Nikon D750  
Lens: 50mm (Nikon AF 50mm f/1.4)  
Camera height: 1.5m AGL  
Date: 30/09/2022

View flat at a comfortable arm's length

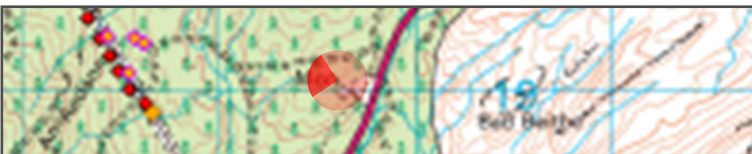






Proposed Development shown in red.  
Creag Dhubh substation in grey  
Creag Dhubh to Dalmally OHL Connection Project in green  
Creag Dhubh to Inveraray OHL Connection Project in purple  
Existing OHL in black

View flat at a comfortable arm's length



OS reference: 209687 719031  
Eye Level: 229.5m AOD  
Direction of view: West  
Horizontal field of view: (90° cylindrical projection)

Camera: Nikon D750  
Lens: 50mm (Nikon AF 50mm f/1.4)  
Camera height: 1.5m AGL  
Date: 30/09/2022

This image provides landscape and visual context only

**Figure: 5.7b: Wireframe of Cumulative Developments**  
Viewpoint 1: Neil Munro Commemorative Monument  
**ITE/ITW Connection**





**Figure: 5.7c: Photomontage**  
Viewpoint 1: Neil Munro Commemorative Monument  
**ITE/ITW Connection**



OS reference: 209687 719031  
Eye Level: 229.5m AOD  
Direction of view: West  
Horizontal field of view: (45° cylindrical projection)

Camera: Nikon D750  
Lens: 50mm (Nikon AF 50mm f/1.4)  
Camera height: 1.5m AGL  
Date: 30/09/2022



View flat at a comfortable arm's length