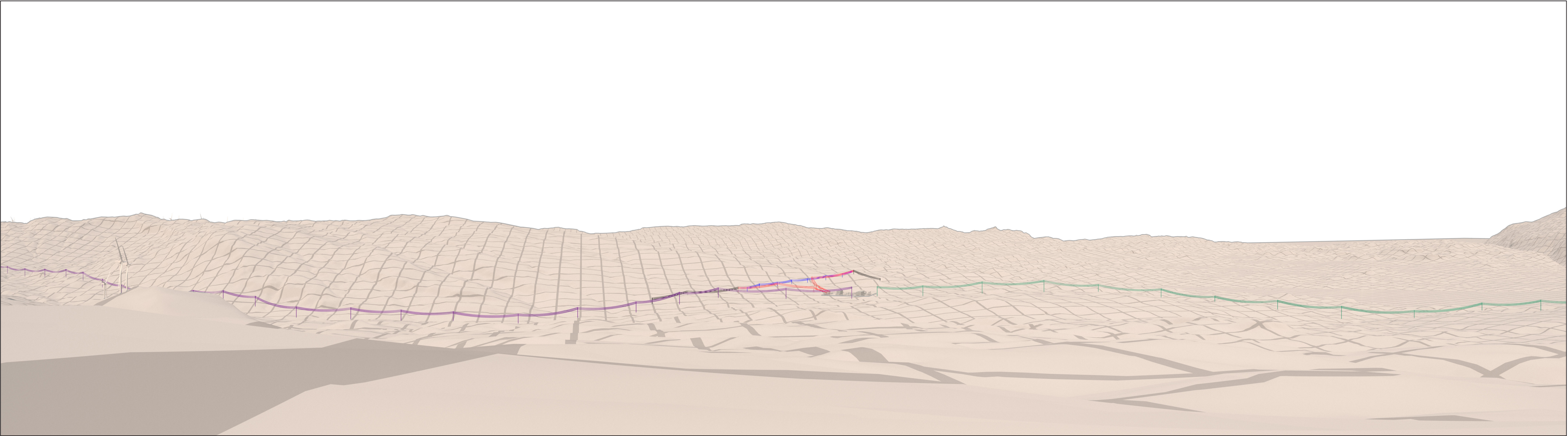




This image provides landscape and visual context only

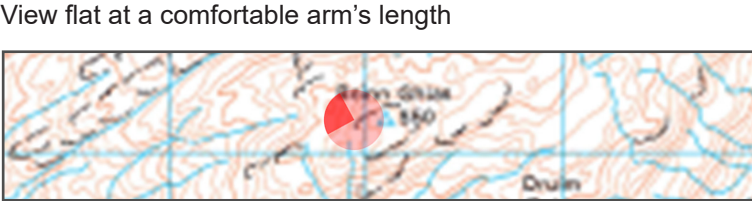
Figure: 5.13a: Baseline Photograph
Viewpoint 7: Beinn Ghlas Summit
ITE/ITW Connection

OS reference:	213047 718214	Camera:	Nikon D750	<p>View flat at a comfortable arm's length</p>
Eye Level:	532.5m AOD	Lens:	50mm (Nikon AF 50mm f/1.4)	
Direction of view:	West	Camera height:	1.5m AGL	
Horizontal field of view:	(53.5° cylindrical projection)	Date and time:	14/11/2022 11:06	



Proposed Development shown in red.
Creag Dhubh substation in grey
Creag Dhubh to Dalmally OHL Connection Project in green
Creag Dhubh to Inveraray OHL Connection Project in purple
Existing OHL in black

This image provides landscape and visual context only



OS reference: 213047 718214
Eye Level: 532.5m AOD
Direction of view: West
Horizontal field of view: (53.5° cylindrical projection)

Camera: Nikon D750
Lens: 50mm (Nikon AF 50mm f/1.4)
Camera height: 1.5m AGL
Date and time: 14/11/2022 11:06



Figure: 5.13b: Photomontage
Viewpoint 4: Beinn a Bhuidh Summit
ITE/ITW Connection



This image provides landscape and visual context only

Figure: 5.13c: Photomontage
Viewpoint 7: Beinn Ghlas Summit
ITE/ITW Connection

OS reference: 213047 718214
Eye Level: 532.5m AOD
Direction of view: West
Horizontal field of view: (53.5° cylindrical projection)

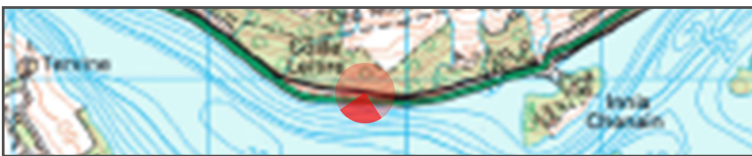
Camera: Nikon D750
Lens: 50mm (Nikon AF 50mm f/1.4)
Camera height: 1.5m AGL
Date and time: 14/11/2022 11:06

View flat at a comfortable arm's length



This image provides landscape and visual context only

View flat at a comfortable arm's length



OS reference: 209910 725869
Eye Level: 42.5 AOD
Direction of view: South
Horizontal field of view: (90° cylindrical projection)

Camera: Nikon D750
Lens: 50mm (Nikon AF 50mm f/1.4)
Camera height: 1.5m AGL
Date: 30/09/2022 08:25



Figure: 5.14a: Baseline Photograph
Viewpoint 8: A85 Layby
ITE/ITW Connection