

Legend

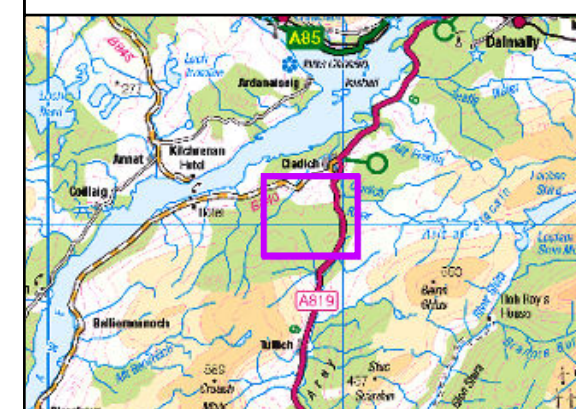
- Proposed OHL Towers
- Indicative Proposed Alignment
- Access Tracks - Existing Upgrade
- Access Tracks - New Stone Permanent
- Access Tracks - New Stone Temporary
- 250 m Study Area
- Watercourse

Surface Water flow Accumulation (5m Horizontal DTM Resolution)

- Indicative Surface Water Flow Path

Topographic Wetness Index (Relative Scale)

- High : 26.2899
- Low : -2.46257



Reproduced by permission of Ordnance Survey on behalf of HMSO.
Crown copyright and database right 2022 all rights reserved.
Ordnance Survey Licence number EL273236.

Project No: LT000029

Project: 1700003673

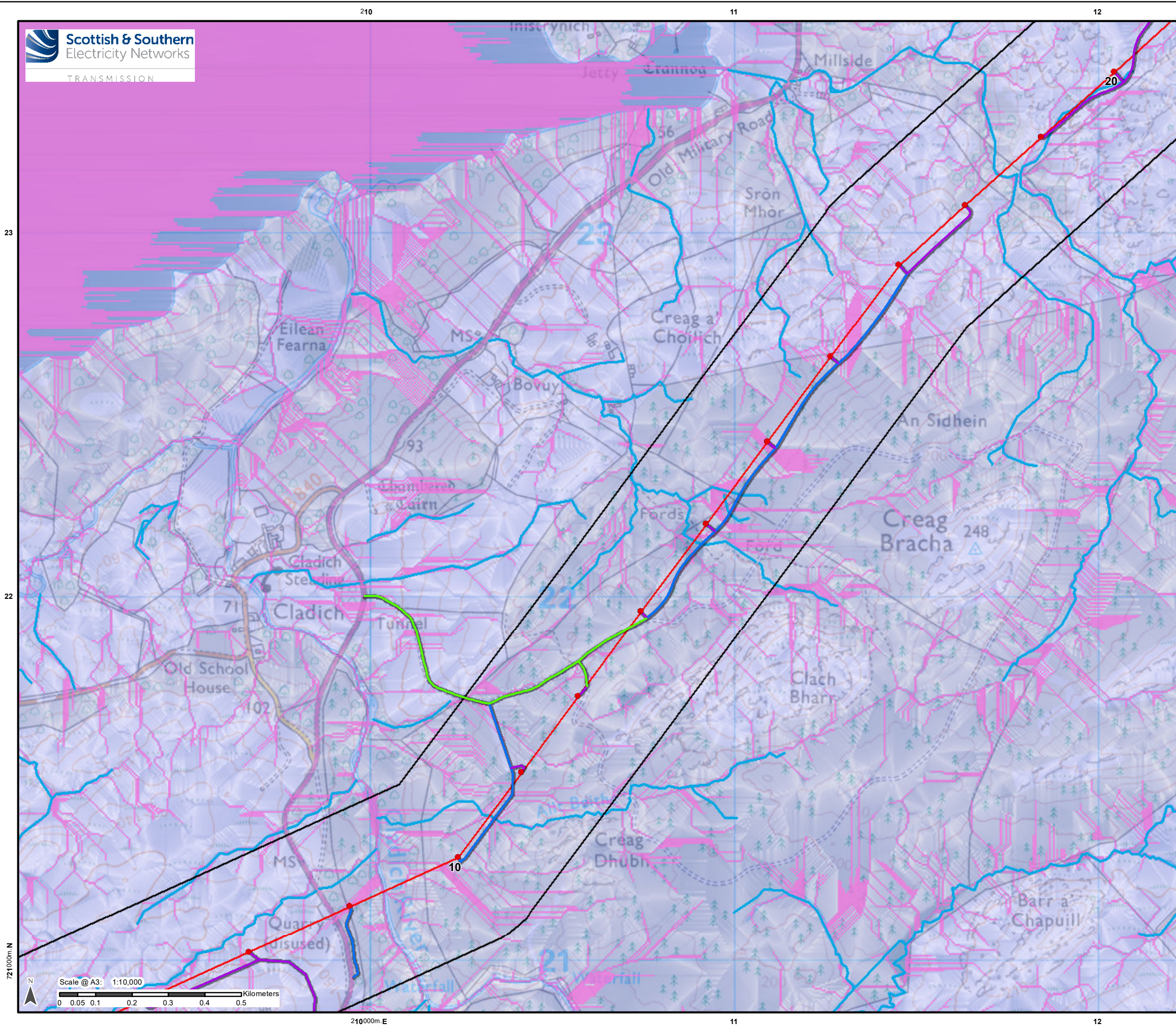
Title:
Creag Dhubh to Dalmally 275 kV Connection

Figure 10.8.4a:
Superficial Geology (BGS,1:625)

Drawn by: CF/JT/AB

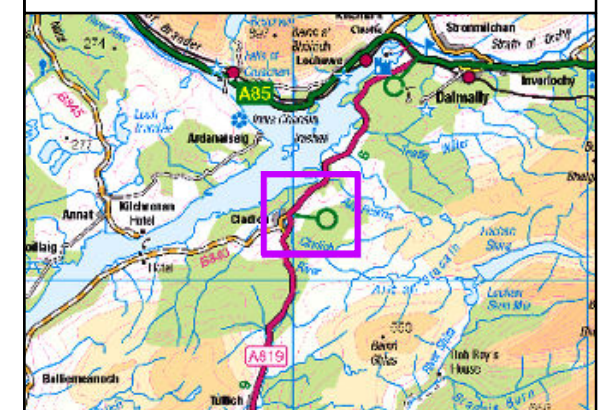
Date: 04/05/2022

Drawing: R170_3673_Fig10.8.4_SurfaceWaterAcc_B



Legend

- Proposed OHL Towers
 - Indicative Proposed Alignment
 - Access Tracks - Existing Upgrade
 - Access Tracks - New Stone Permanent
 - Access Tracks - New Stone Temporary
 - 250 m Study Area
 - Watercourse
- Surface Water flow Accumulation (5m Horizontal DTM Resolution)**
- Indicative Surface Water Flow Path
- Topographic Wetness Index (Relative Scale)**
- High : 26.2899
 - Low : -2.46257



Reproduced by permission of Ordnance Survey on behalf of HMSO.
Crown copyright and database right 2022 all rights reserved.
Ordnance Survey Licence number EL273236.

Project No: LT000029

Project: 1700003673

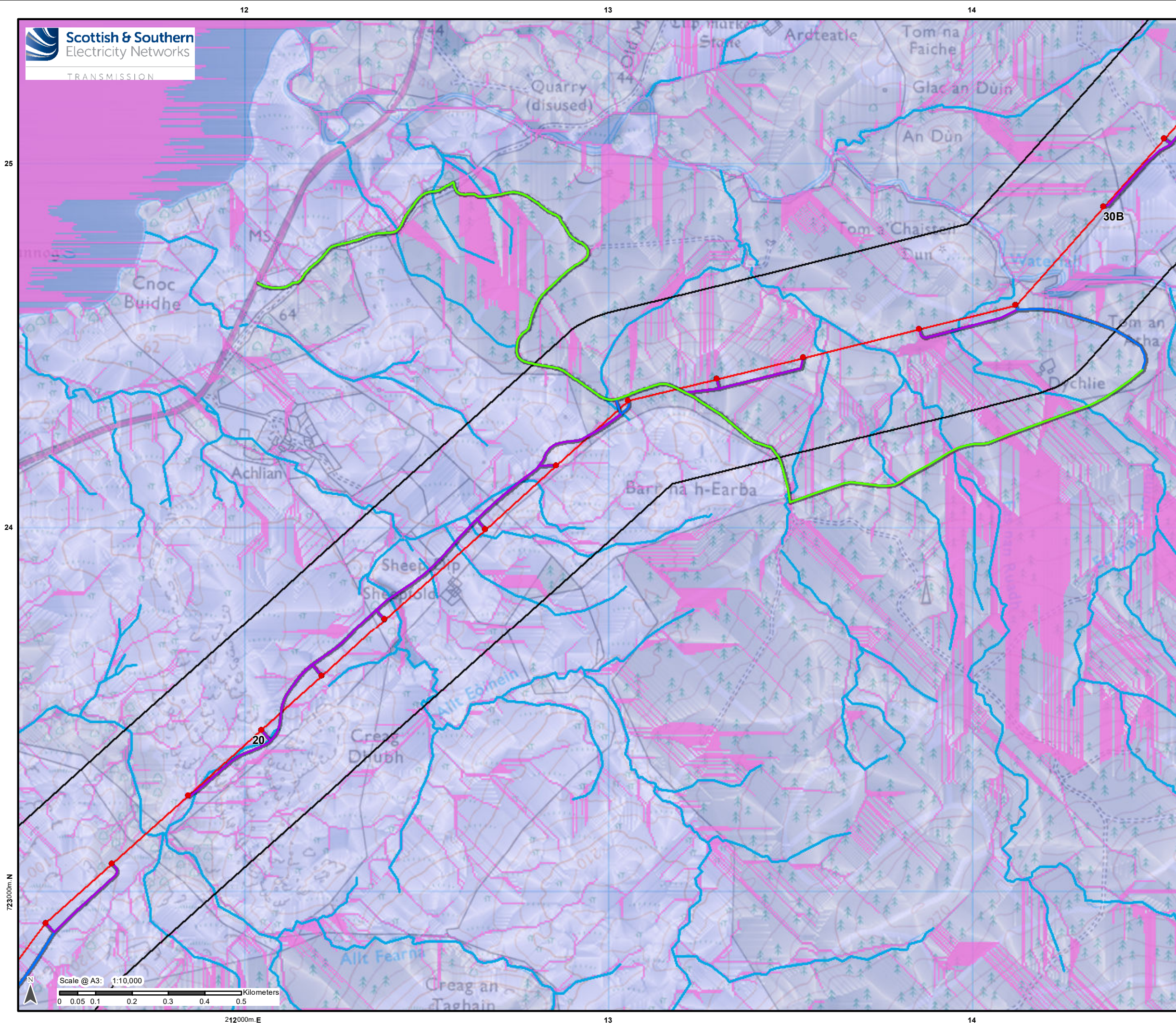
Title:
Creag Dhubh to Dalmally 275 kV Connection

Figure 10.8.4b:
Superficial Geology (BGS,1:625)

Drawn by: CF/JT/AB

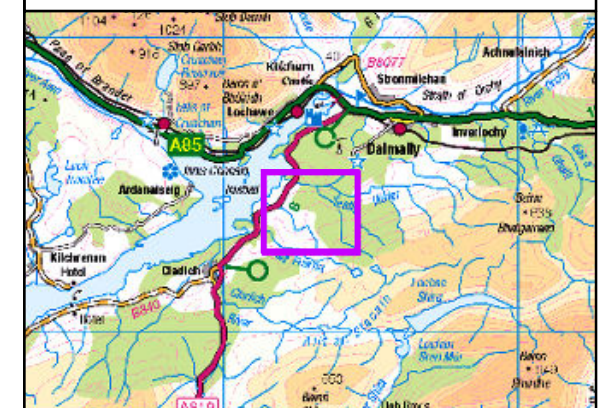
Date: 04/05/2022

Drawing: R170_3673_Fig10.8.4_SurfaceWaterAcc_B



Legend

- Proposed OHL Towers
 - Indicative Proposed Alignment
 - Access Tracks - Existing Upgrade
 - Access Tracks - New Stone Permanent
 - Access Tracks - New Stone Temporary
 - 250 m Study Area
 - Watercourse
- Surface Water flow Accumulation (5m Horizontal DTM Resolution)**
- Indicative Surface Water Flow Path
- Topographic Wetness Index (Relative Scale)**
- High : 26.2899
 - Low : -2.46257



Reproduced by permission of Ordnance Survey on behalf of HMSO.
Crown copyright and database right 2022 all rights reserved.
Ordnance Survey Licence number EL273236.

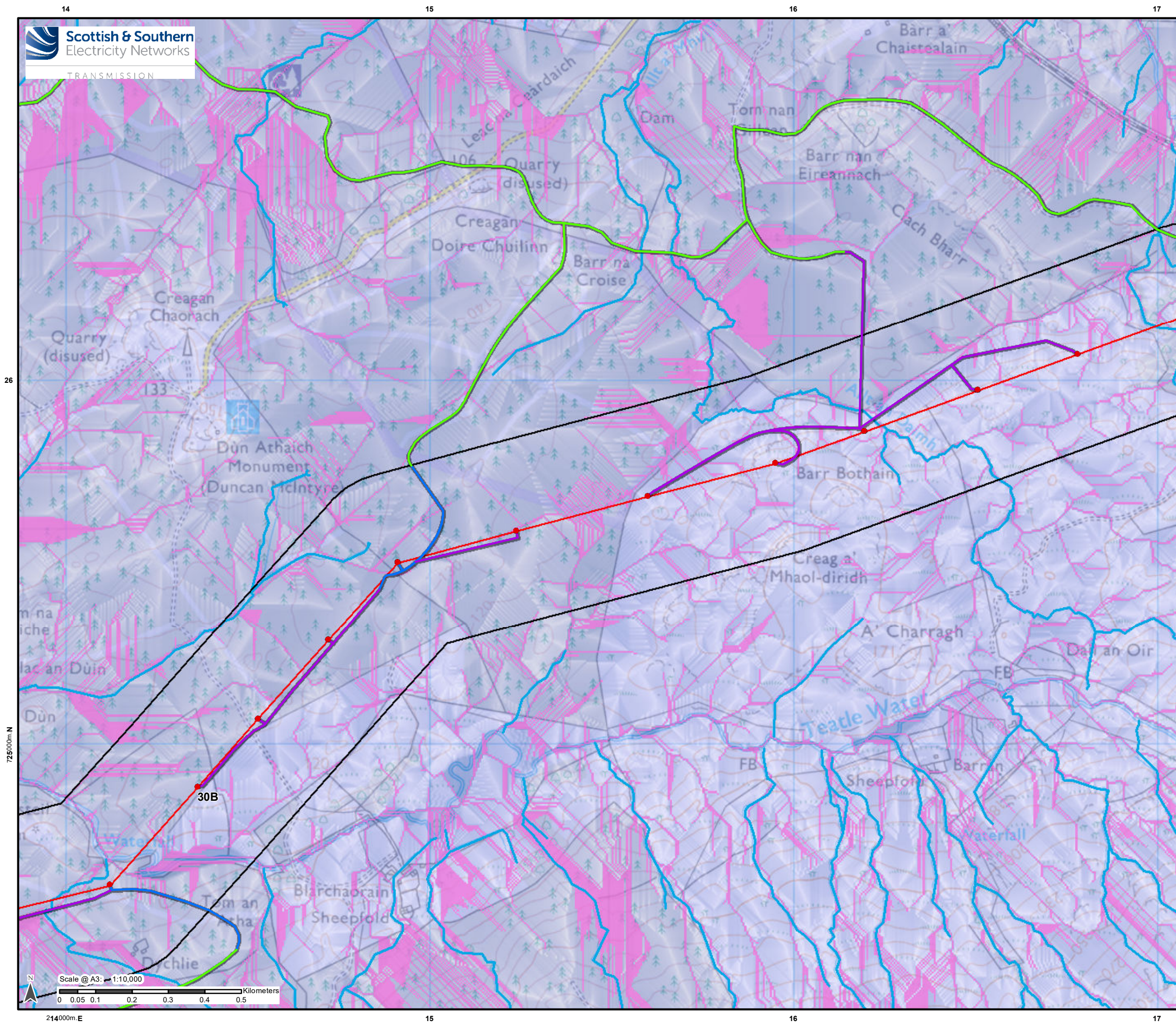
Project No: LT000029
Project: 1700003673

Title:
Creag Dhubb to Dalmally 275 kV Connection

Figure 10.8.4c:
Superficial Geology (BGS,1:625)

Drawn by: CF/JT/AB Date: 04/05/2022

Drawing: R170_3673_Fig10.8.4_SurfaceWaterAcc_B



Legend

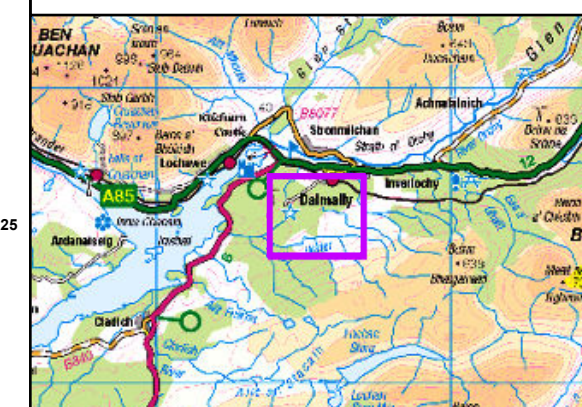
- Proposed OHL Towers
- Indicative Proposed Alignment
- Access Tracks - Existing Upgrade
- Access Tracks - New Stone Permanent
- Access Tracks - New Stone Temporary
- 250 m Study Area
- Watercourse

Surface Water flow Accumulation (5m Horizontal DTM Resolution)

- Indicative Surface Water Flow Path

Topographic Wetness Index (Relative Scale)

- High : 26.2899
- Low : -2.46257



Reproduced by permission of Ordnance Survey on behalf of HMSO.
Crown copyright and database right 2022 all rights reserved.
Ordnance Survey Licence number EL273236.

Project No: LT000029

Project: 1700003673

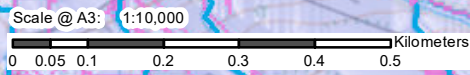
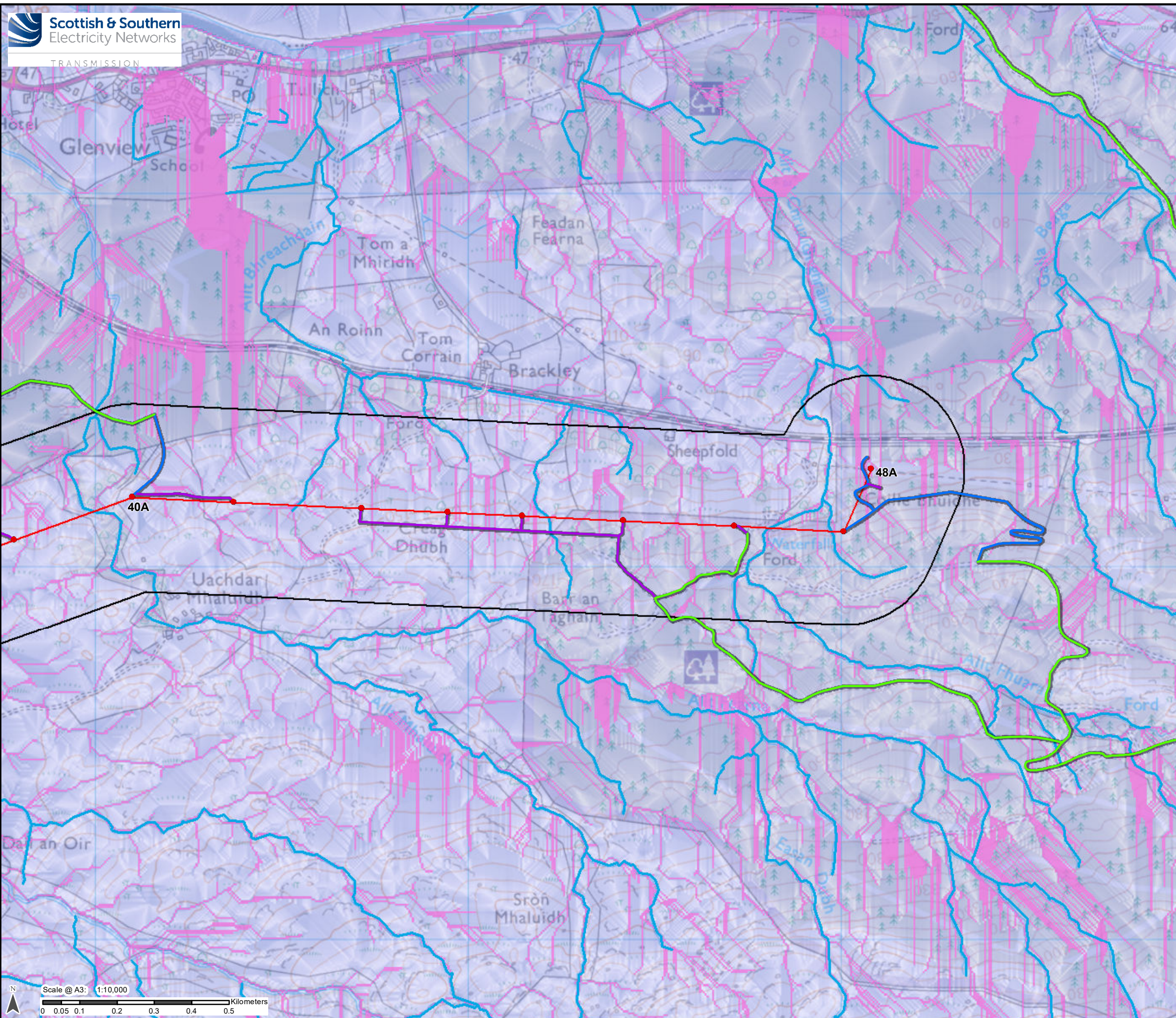
Title:
Creag Dhubh to Dalmally 275 kV Connection

Figure 10.8.4d:
Superficial Geology (BGS,1:625)

Drawn by: CF/JT/AB

Date: 04/05/2022

Drawing: R170_3673_Fig10.8.4_SurfaceWaterAcc_B



Legend

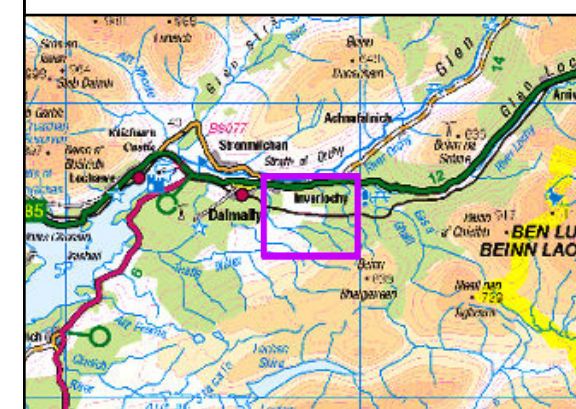
- Proposed OHL Towers
- Indicative Proposed Alignment
- Access Tracks - Existing Upgrade
- Access Tracks - New Stone Permanent
- Access Tracks - New Stone Temporary
- 250 m Study Area
- Watercourse

Surface Water flow Accumulation (5m Horizontal DTM Resolution)

- Indicative Surface Water Flow Path

Topographic Wetness Index (Relative Scale)

- High : 26.2899
- Low : -2.46257



Reproduced by permission of Ordnance Survey on behalf of HMSO.
Crown copyright and database right 2022 all rights reserved.
Ordnance Survey Licence number EL273236.

Project No: LT000029

Project: 1700003673

Title:
Creag Dhùbh to Dalmally 275 kV Connection

Figure 10.8.4e:
Superficial Geology (BGS,1:625)

Drawn by: CF/JT/AB

Date: 04/05/2022

Drawing: R170_3673_Fig10.8.4_SurfaceWaterAcc_B