



Transmission Executive Committee



CUSTOMER AND STAKEHOLDERS

The Customers & Stakeholders Directorate works with connecting customers, colleagues, local communities, government and other key stakeholders to ensure that customer and stakeholder needs are considered throughout the work that we do. Ensuing that we are a stakeholder-led business.



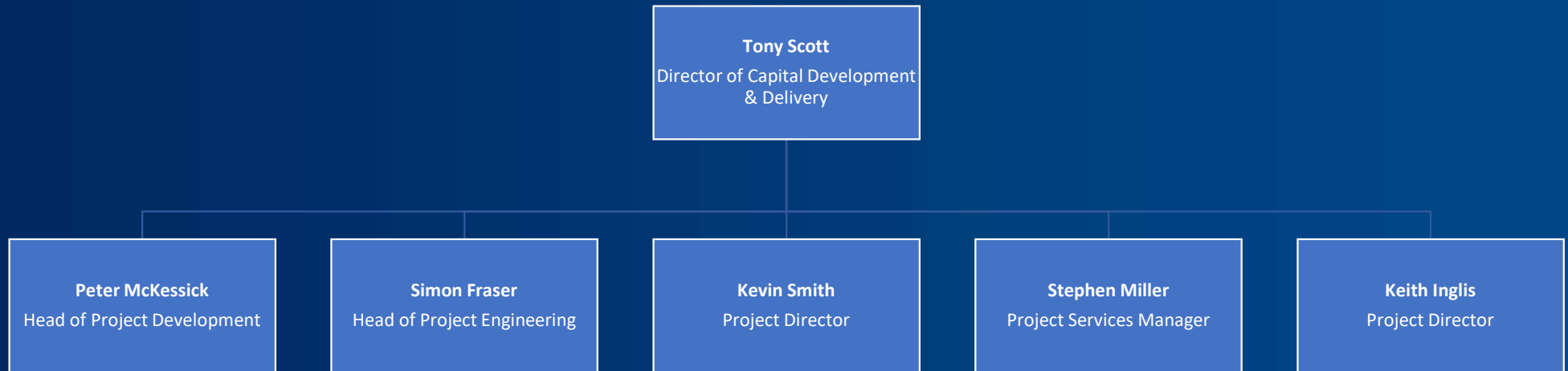
Business Planning & Commercial

Our Business Planning & Commercial Directorate undertakes network and business planning to deliver the full commercial potential of our assets. This includes delivery of our T-2 Business Plan and brings together strategy with system planning



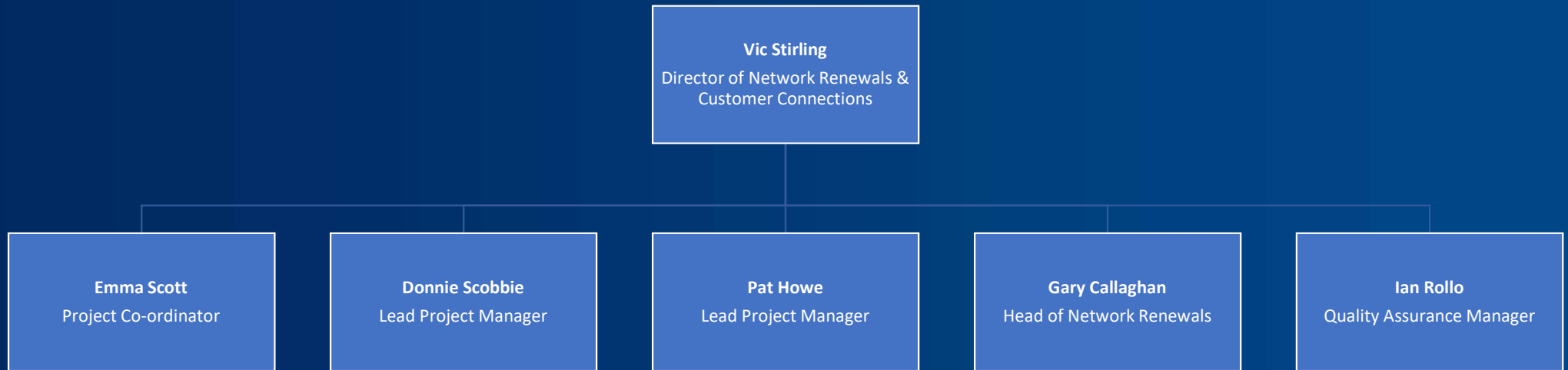
Asset Management & Operations

The Asset Management & Operations directorate drives safe, efficient and effective network operation, whilst optimising availability and income from our assets in an innovative and sustainable way



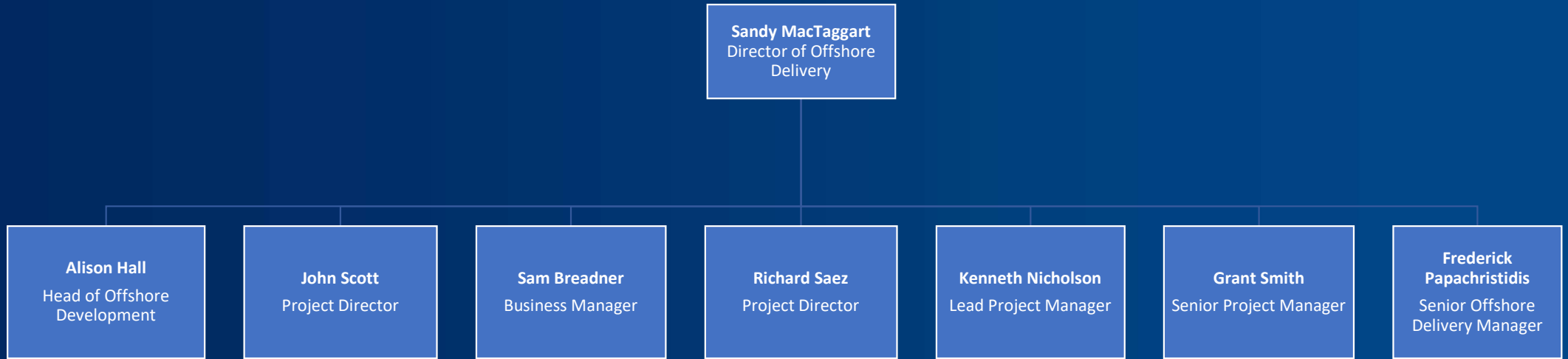
Capital Development & Delivery

Our Capital Development & Delivery directorate develops and delivers cost-effective capital projects and fit for purpose customer solutions which enable the Transmission network to meet growth requirements



Base Capex & Customer Connections

The Base Capex & Customer Connections directorate safely and efficiently develop and deliver non-load related Base Capex and Customer Connections projects. They are responsible for the construction of projects for our important generator connection customers and SHEPD.



Offshore Delivery

Our Offshore Delivery directorate are responsible for the development and delivery of the transmission link projects to connect each of Scotland's major island groups – Shetland, Orkney and the Western Isles – and the delivery element of the East Coast High-voltage direct current (HVDC) projects