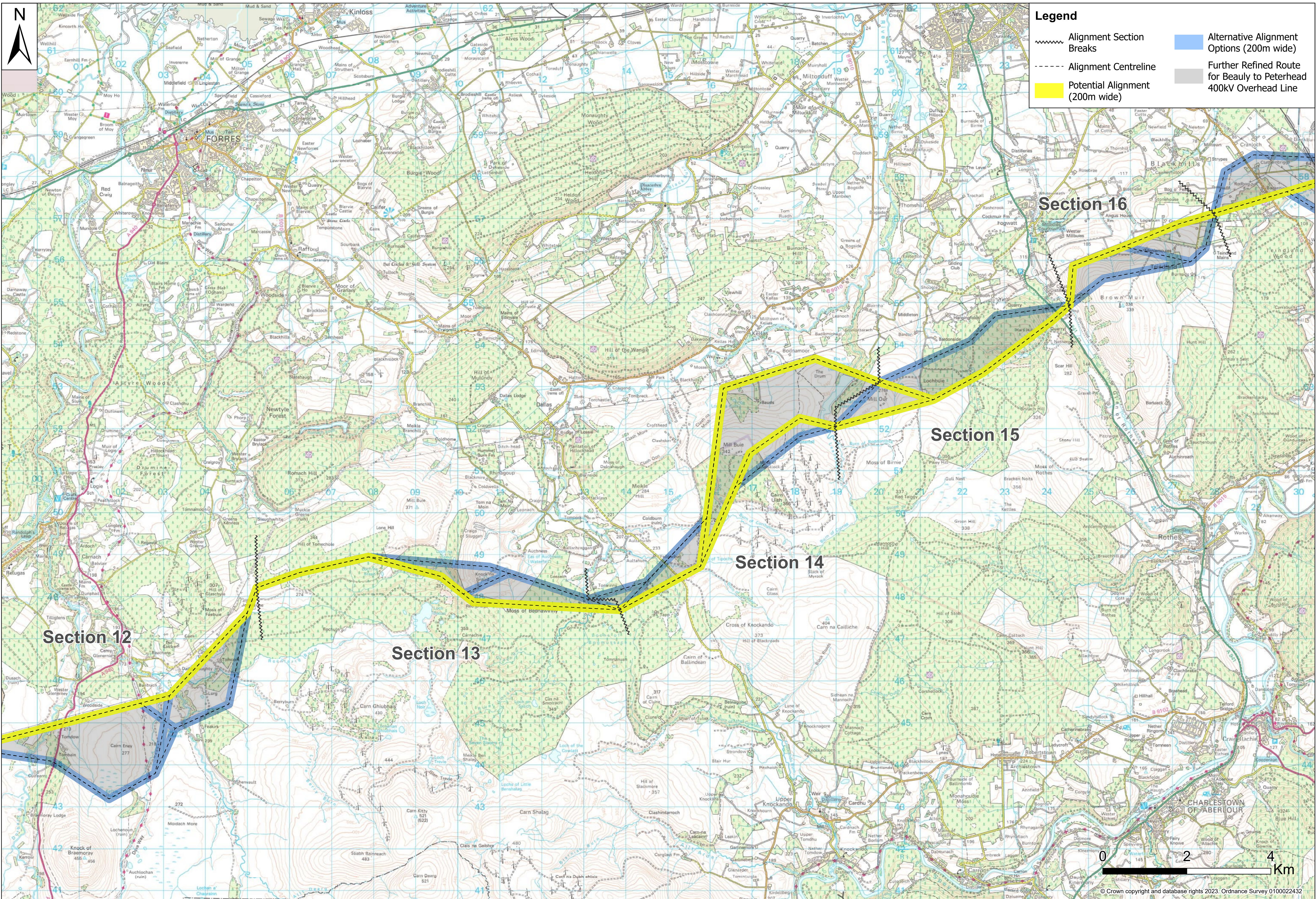



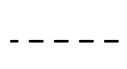

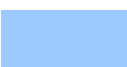

Legend

- ▲ Existing Substation
- Proposed Substation Site (Proposal of Application Notice (PAN) Boundary)
- Alignment Section Breaks
- Alignment Centreline
- Potential Alignment (200m wide)
- Alternative Alignment Options (200m wide)
- Further Refined Route for Beaulieu to Peterhead 400kV Overhead Line





Legend

-  Alignment Section Breaks
-  Alignment Centreline
-  Potential Alignment (200m wide)
-  Alternative Alignment Options (200m wide)
-  Further Refined Route for Beauly to Peterhead 400kV Overhead Line

Section 12

Section 13

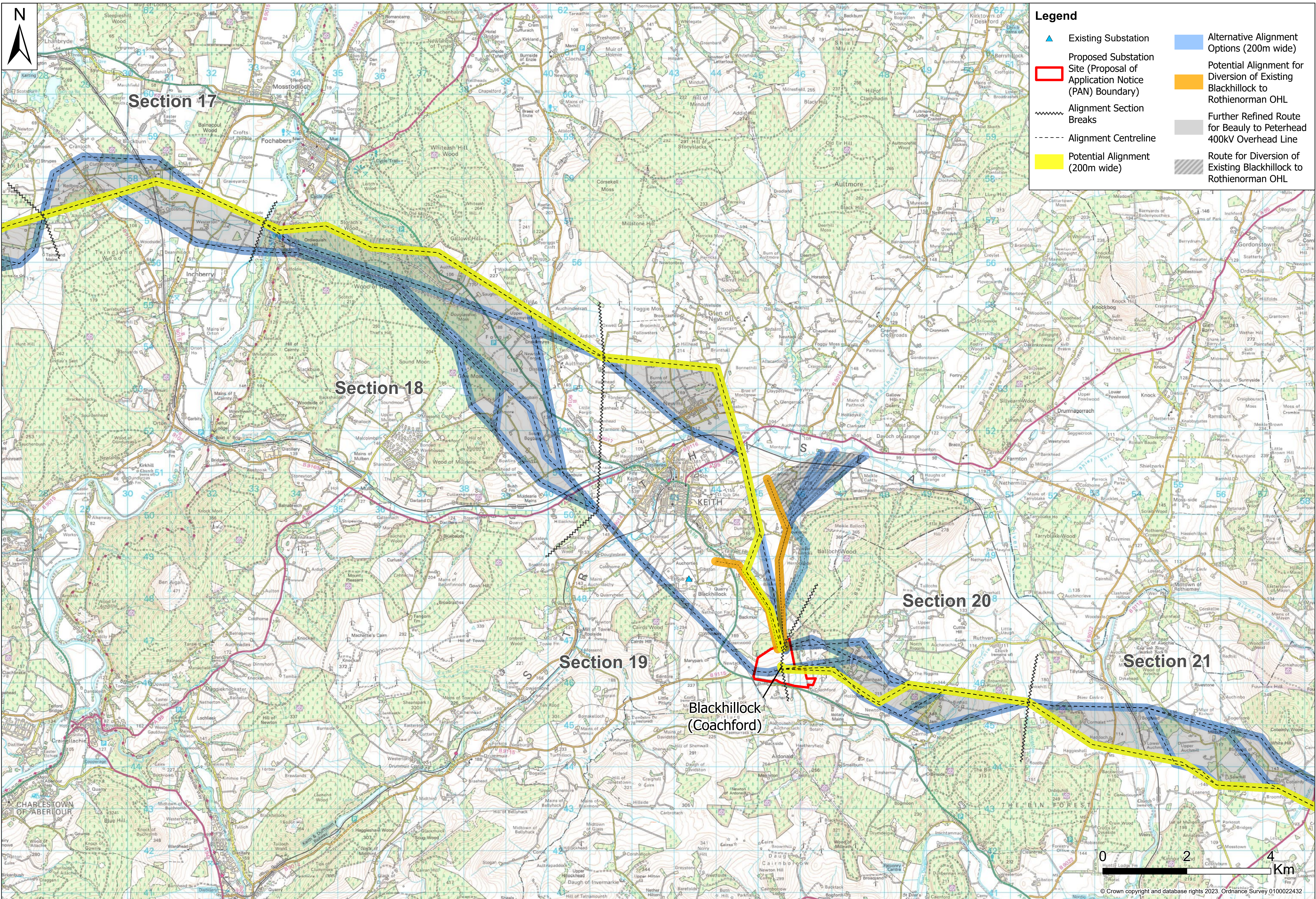
Section 14

Section 15

Section 16

0 2 4 Km

© Crown copyright and database rights 2023. Ordnance Survey 0100022432



Legend

- Existing Substation
- Proposed Substation Site (Proposal of Application Notice (PAN) Boundary)
- Alignment Section Breaks
- Alignment Centreline
- Potential Alignment (200m wide)
- Alternative Alignment Options (200m wide)
- Potential Alignment for Diversion of Existing Blackhillock to Rothern Norman OHL
- Further Refined Route for Beauly to Peterhead 400kV Overhead Line
- Route for Diversion of Existing Blackhillock to Rothern Norman OHL

Section 17

Section 18

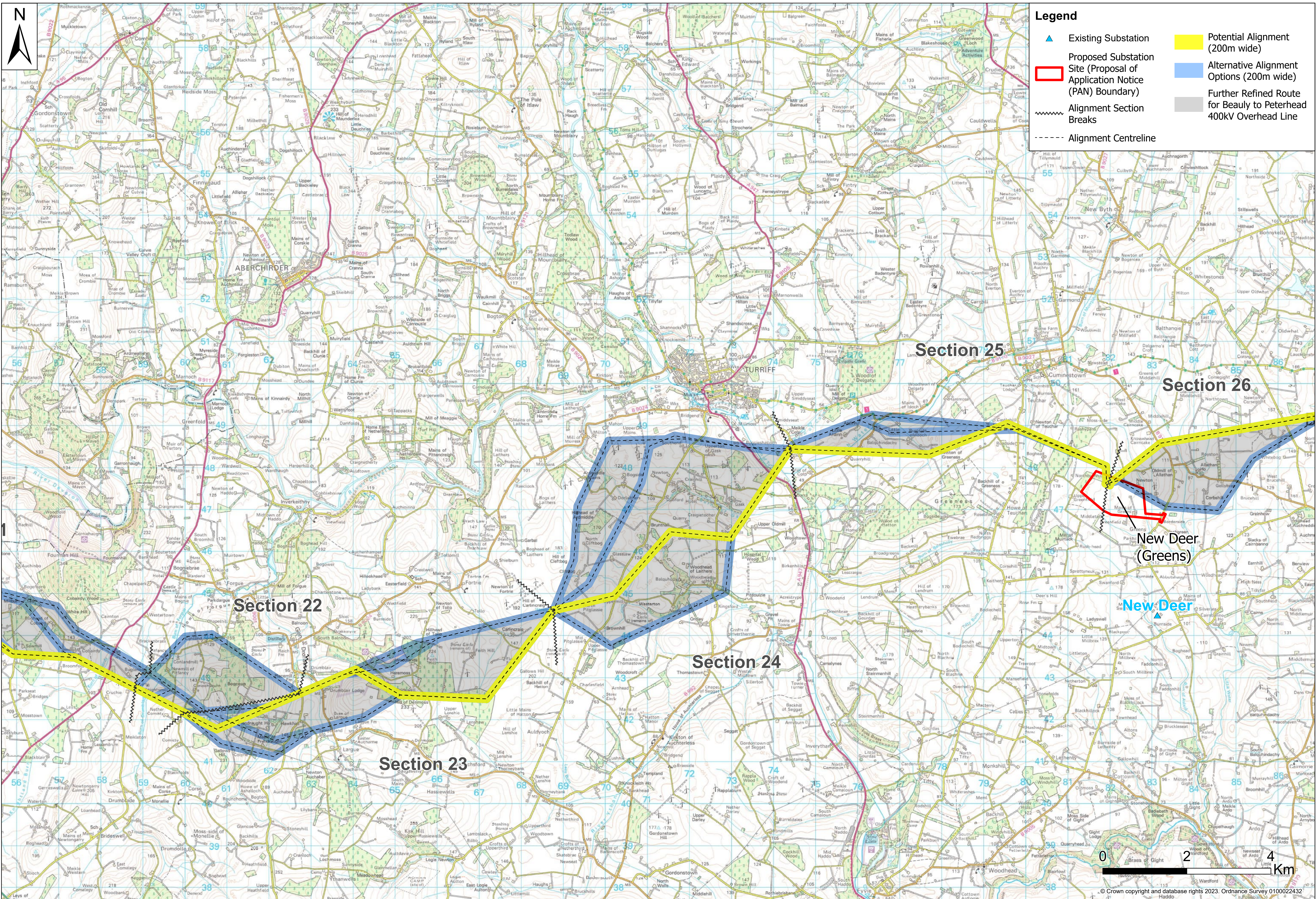
Section 19

Section 20

Section 21

Blackhillock (Coachford)

0 2 4 Km



Legend

- ▲ Existing Substation
- Proposed Substation Site (Proposal of Application Notice (PAN) Boundary)
- ~ Alignment Section Breaks
- Alignment Centreline
- Potential Alignment (200m wide)
- Alternative Alignment Options (200m wide)
- Further Refined Route for Beauly to Peterhead 400kV Overhead Line

Section 25

Section 26

New Deer (Greens)

New Deer

Section 24

Section 22

Section 23

