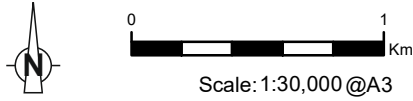


Grid Ref: 252091 901730 Distance to Proposed Development: 0.91km AOD: 173.6m







VL1 – This VL is located on the southern grassy verge of the A839, approximately 5 km east of Rosehall and approximately 7.5 km south-west of Lairg. It is approximately 0.2 km west of the entrance to Rosehall Wind Farm which is situated on the northern side of the A839.

Figure 4.5a
Visualisation Location 1 - A839



Tripod Photo

- Key**
-  Visualisation Location 1 (VL)
 -  Proposed Pole Location
 -  Proposed Overhead Line (OHL)
 -  Limit of Deviation (LoD) for Proposed OHL (50m either side)

Drawing No. - 122010-D-EA-V4.5a-c
Revision - 1.0.0
Date - 22/08/2024



Existing View

Terrain model

OS reference: 252091 E 901730 N Nearest proposed pole: 91.1m Ground level: 173.6m AOD Direction of view: 100°
 Camera: Canon EOS 6D Focal length: 50mm vertical (27°) x 28mm horizontal (65.5°) Camera height: 1.5m Date: 16/05/2024 Time: 13:37

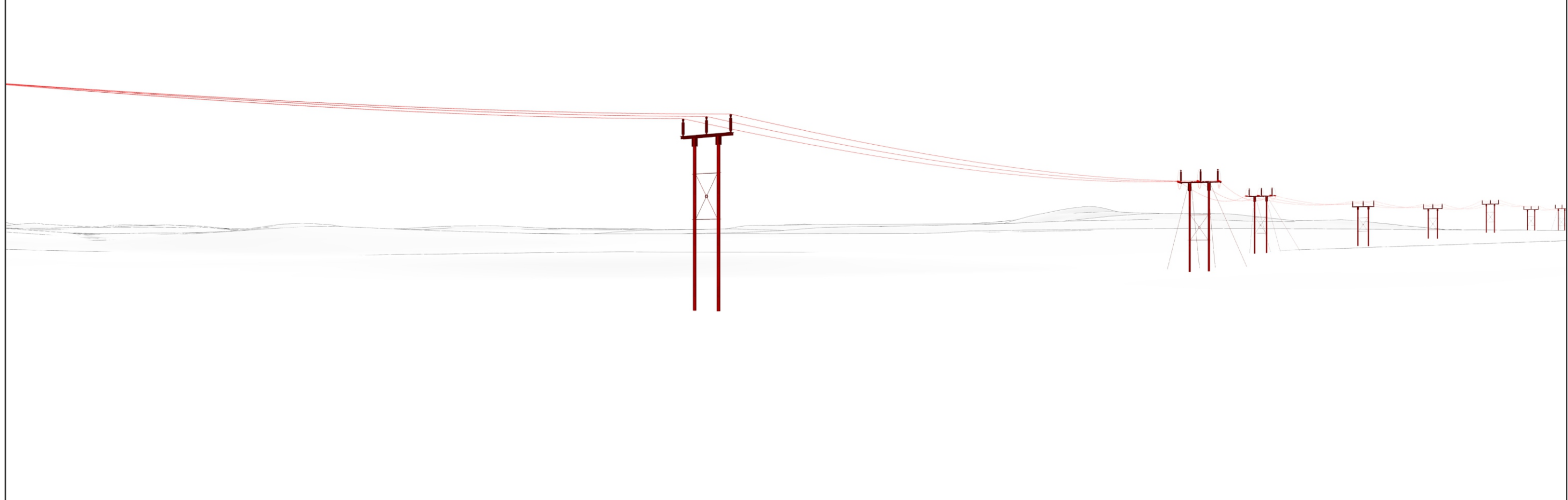


Figure 4.5c: Visualisation Location 1 - A839



Figure 4.5b: Visualisation Location 1 - A839

OS reference: 252091 E 901730 N Nearest proposed pole: 91.1m Ground level: 173.6m AOD Direction of view: 100°
Camera: Canon EOS 6D Focal length: 50mm vertical (27°) x 28mm horizontal (65.5°) Camera height: 1.5m Date: 16/05/2024 Time: 13:37
Drawing No. - 122010-D-EA-4.5B-C-1.0.0 Date - 06.03.2025

The images contained on this page and the following are not representative of scale and distance from the actual viewpoint and shows the proposed development in its wider landscape context only.