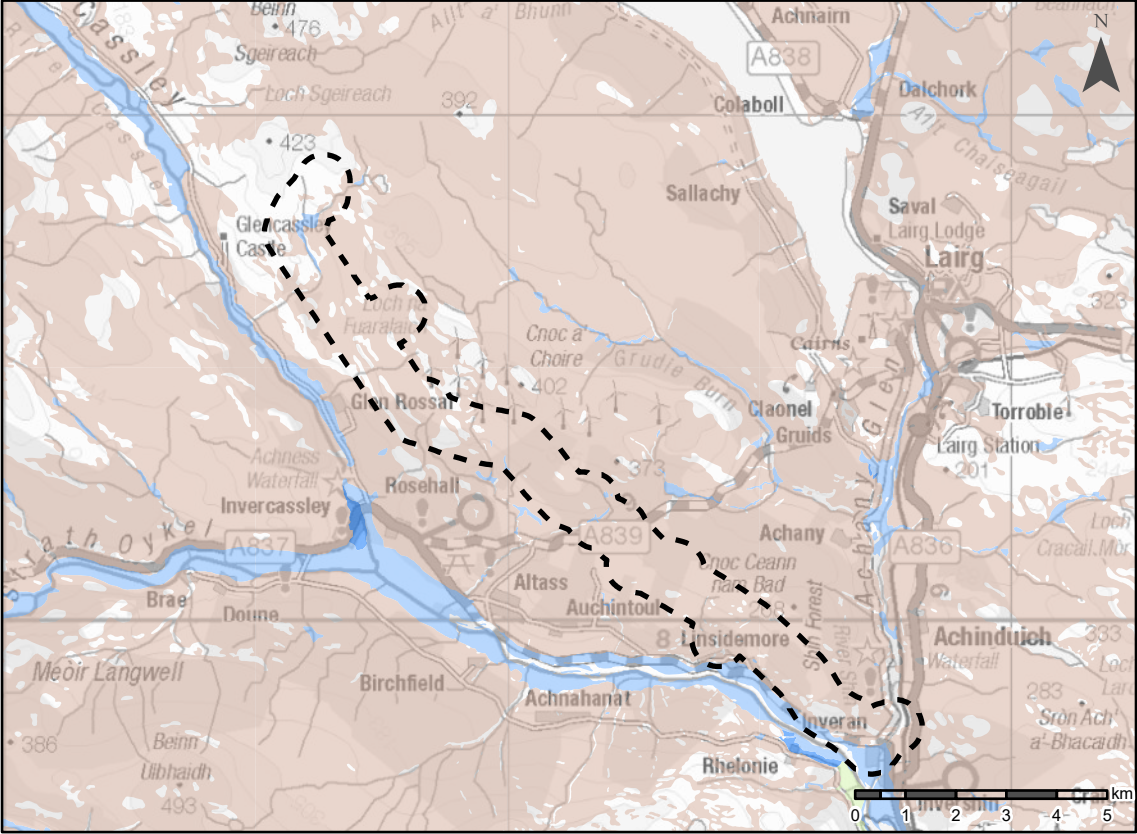


TRANSMISSION



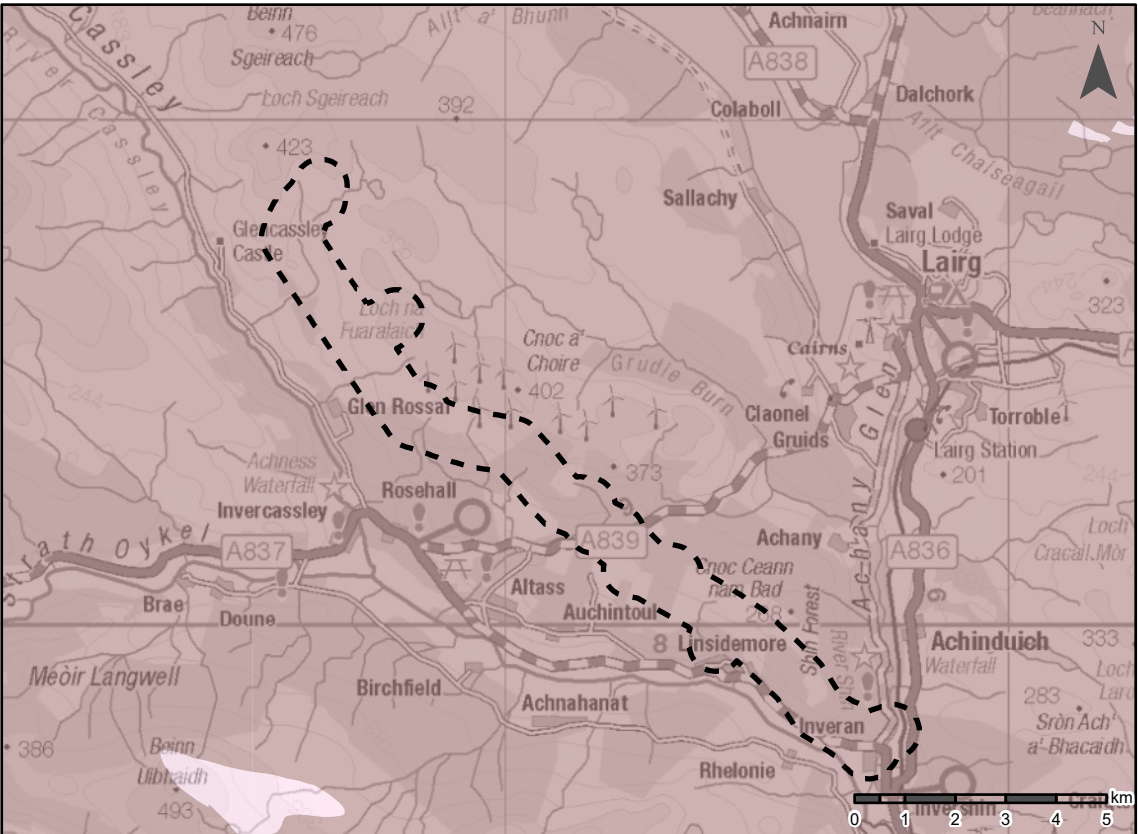
MAP EXTRACT

Scale -1:300,000 @ A3



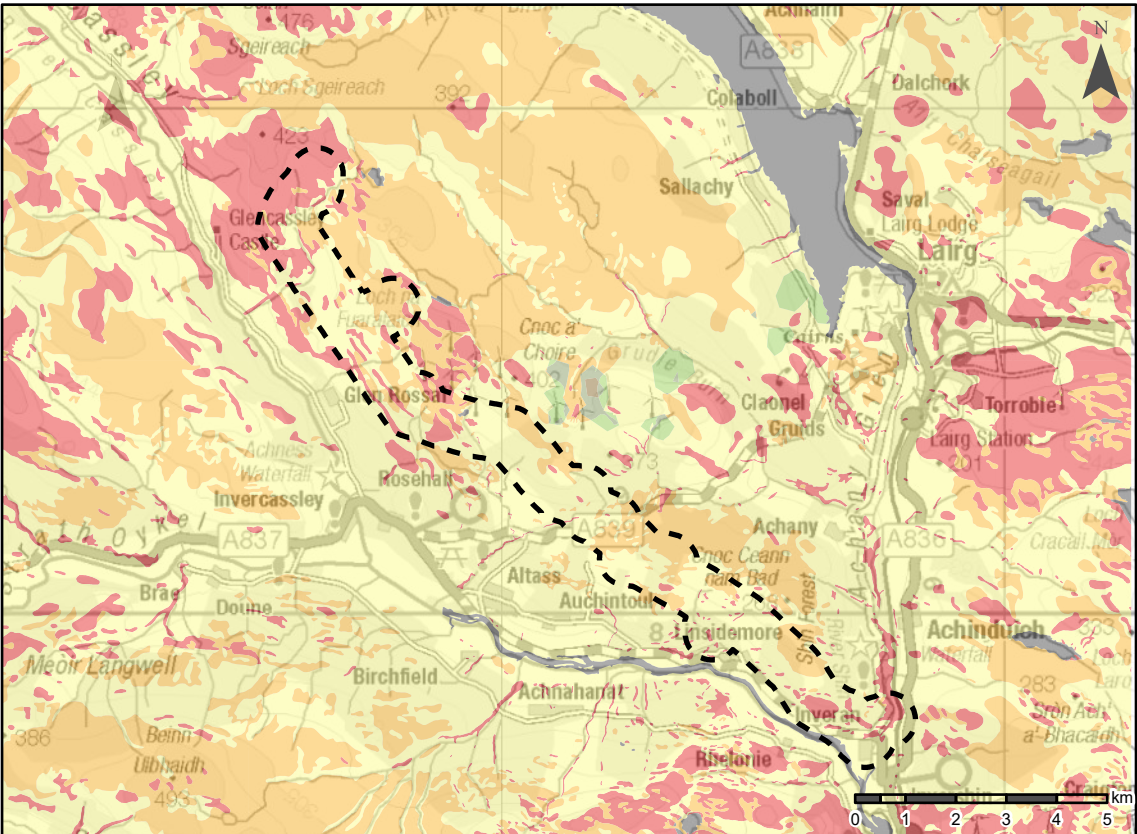
SUPERFICIAL AQUIFERS

Scale -1:150,000 @ A3



BEDROCK AQUIFERS

Scale -1:150,000 @ A3



GROUNDWATER VULNERABILITY

Scale -1:150,000 @ A3

Legend

Study Area (500 m buffer either side of the Proposed Development)

Superficial Deposits Aquifer Productivity Scotland, Version 2

- Intergranular; High Productivity
- Intergranular; Moderate to High Productivity
- Intergranular; Low to Moderate Productivity
- Not a Significant Aquifer

Bedrock Aquifer Productivity Scotland, Version 2

- Fracture; Low Productivity
- Fracture; Very Low Productivity

Groundwater Vulnerability

- 5 - Vulnerable to Most Pollutants, with Rapid Impact in Many Scenarios.
- 4a - Vulnerable to Those Pollutants not Readily Adsorbed or Transformed. Less Likely to Have Clay Present in Superficial Deposits (Therefore Generally Higher Vulnerability Than 4b).
- 4b - Vulnerable to Those Pollutants not Readily Adsorbed or Transformed. More Likely to Have Clay Present in Superficial Deposits (Therefore Generally Lower Vulnerability Than 4a).
- 3 - Vulnerable to Some Pollutants, but Only When They Are Continuously Discharged/Leached.
- 2 - Vulnerable to Some Pollutants, but Only When They Are Continuously Discharged/Leached.
- 1 - Only Vulnerable to Conservative Pollutants in the Long Term When Continuously and Widely Discharged/Leached.
- 0 - Not Sufficient Data to Classify Vulnerability: e.g. Below Lochs; in Urban Areas Where Geological and/or Soils Data are Missing; or Where Superficial Deposits are Mapped but not Classified.

Reproduced by permission of Ordnance Survey on behalf of HMSO.
Crown copyright and database right 2025 all rights reserved.
Ordnance Survey Licence number 0100022432.
Reproduced with permission of the British Geological Survey
©UKNI. All rights reserved.

Project: Achany Extension Wind Farm
Grid Connection: Environmental Appraisal

Title: Figure 7.7: Groundwater Vulnerability

Drawn by: RD Date: 03/04/2025

Drawing: 428.V64120.00001.0010.1