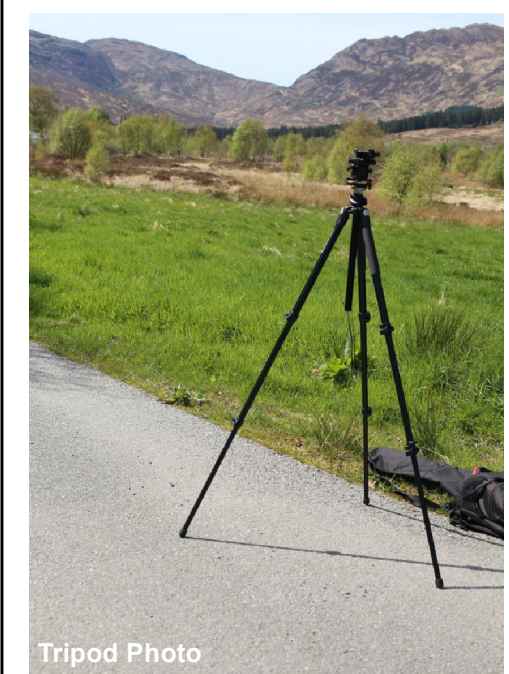


Key

- Alternative OHL Alignment
- Alternative Alignment Steel Lattice Tower
- Existing Steel Lattice Tower to be Retained
- Proposed OHL Alignment
- Proposed Steel Lattice Tower
- Existing 132 kV OHL to be dismantled (Steel Lattice)
- Existing Access Track
- Existing Access Track to be Upgraded
- New Permanent Access Track (Cut / Fill Construction)
- New Permanent Access Track (Floating Construction)
- New Permanent Access Track (construction type to be determined)
- - - New Temporary Access Track
- New Temporary Spur to Towers
- Visualisation Location (VL)
- ▲ Direction of View (53.5°)



Tripod Photo

Ordnance Survey Grid Reference:
NG 178665, 820525

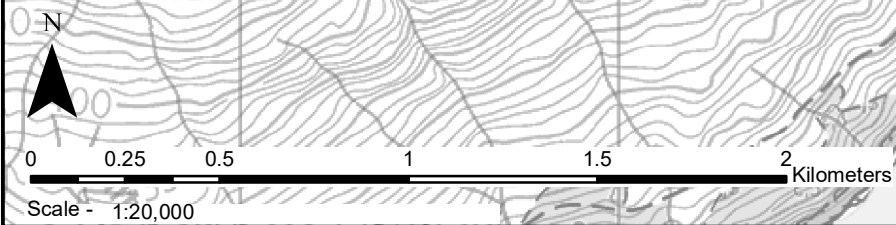
Reproduced by permission of Ordnance Survey on behalf of HMSO.
Crown copyright and database right 2023 all rights reserved.
Ordnance Survey Licence number EL273236.

Project No: LT91
Project: Skye Reinforcement Project
EIA Report

Title: Figure AI-A-3.6a
Visualisation Location Plan VL 3-6
Kylarhea Village (Alternative Viewing Angle)

Drawn by: LV 27/01/2023

Drawing: 119026-D-EIA-V4A-3.6a-1.0.0





Existing View

View flat at a comfortable arm's length

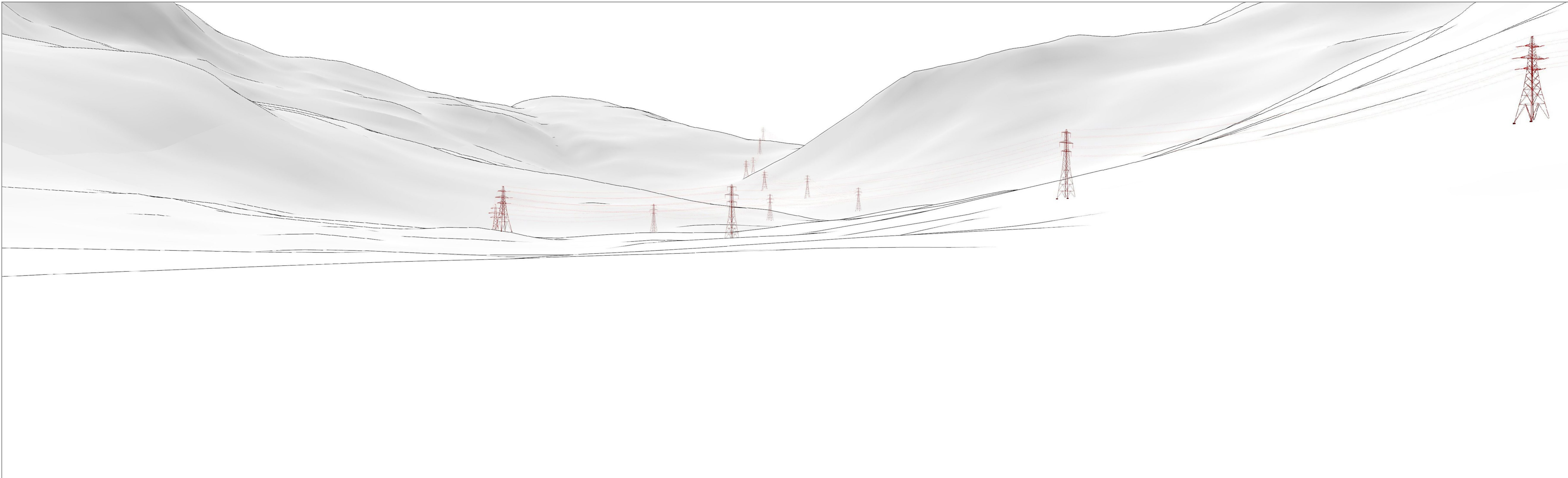
Skye Reinforcement Project EIA Report

Figure AI-A-3.6b - Visualisation Location 3-6: Kylerhea Village (Alternative Viewing Angle), Existing View

OS reference:	178665 E 820525 N	Camera:	Canon EOS 6D	Horizontal field of view:	53.5° (planar projection)
Ground level:	11.2 m AOD	Lens:	50mm (Canon EF 50mm f/1.4)	Principal distance:	812.5 mm
Direction of view:	277°	Camera height:	1.5m AGL	Paper size:	841 x 297 mm (half A1)
Nearest proposed tower:	0.58 km	Date and time:	03/05/2017 13:02	Correct printed image size:	820 x 260 mm

Drawing No. - 119026-D-AI-V4-3.6B-1.0.0 Date - 30.01.2023





Wireline

View flat at a comfortable arm's length

Skye Reinforcement Project EIA Report
 Figure AI-A-3.6c - Visualisation Location 3-6: Kylerhea Village (Alternative Viewing Angle), Wireline

OS reference:	178665 E 820525 N	Horizontal field of view:	53.5° (planar projection)
Ground level:	11.2 m AOD	Principal distance:	812.5 mm
Direction of view:	277°	Paper size:	841 x 297 mm (half A1)
Nearest proposed tower:	0.58 km	Correct printed image size:	820 x 260 mm





Photomontage

View flat at a comfortable arm's length

Skye Reinforcement Project EIA Report
 Figure AI-A-3.6d - Visualisation Location 3-6: Kylerhea Village (Alternative Viewing Angle), Photomontage

OS reference:	178665 E 820525 N	Camera:	Canon EOS 6D	Horizontal field of view:	53.5° (planar projection)
Ground level:	11.2 m AOD	Lens:	50mm (Canon EF 50mm f/1.4)	Principal distance:	812.5 mm
Direction of view:	277°	Camera height:	1.5m AGL	Paper size:	841 x 297 mm (half A1)
Nearest proposed tower:	0.58 km	Date and time:	03/05/2017 13:02	Correct printed image size:	820 x 260 mm

Drawing No. - 119026-D-AI-V4-3.6D-1.0.0 Date - 30.01.2023

