



Grid Ref: 175560 820650 Nearest proposed tower: 0.17km AOD: 266.8m



Tripod Photo

- Key**
- Alternative OHL Alignment
 - Alternative Alignment Steel Lattice Tower
 - Proposed OHL Alignment
 - Proposed Steel Lattice Tower
 - Visualisation Location (VL)

From the A87 east of Ashaig, take the minor road to the south-east, signposted Kyclerhea. Follow this route for 7.5km and stop in a rough parking area overlooking the glen where the VL is located.

FIGURE AI-B-3.4a
VL3-4 Bealach Udal (Alternative Viewing Angle)

Drawing No. - 119026-D-EIA-V4B-3.4a
Revision - 1.0.0
Date -27/01/2023



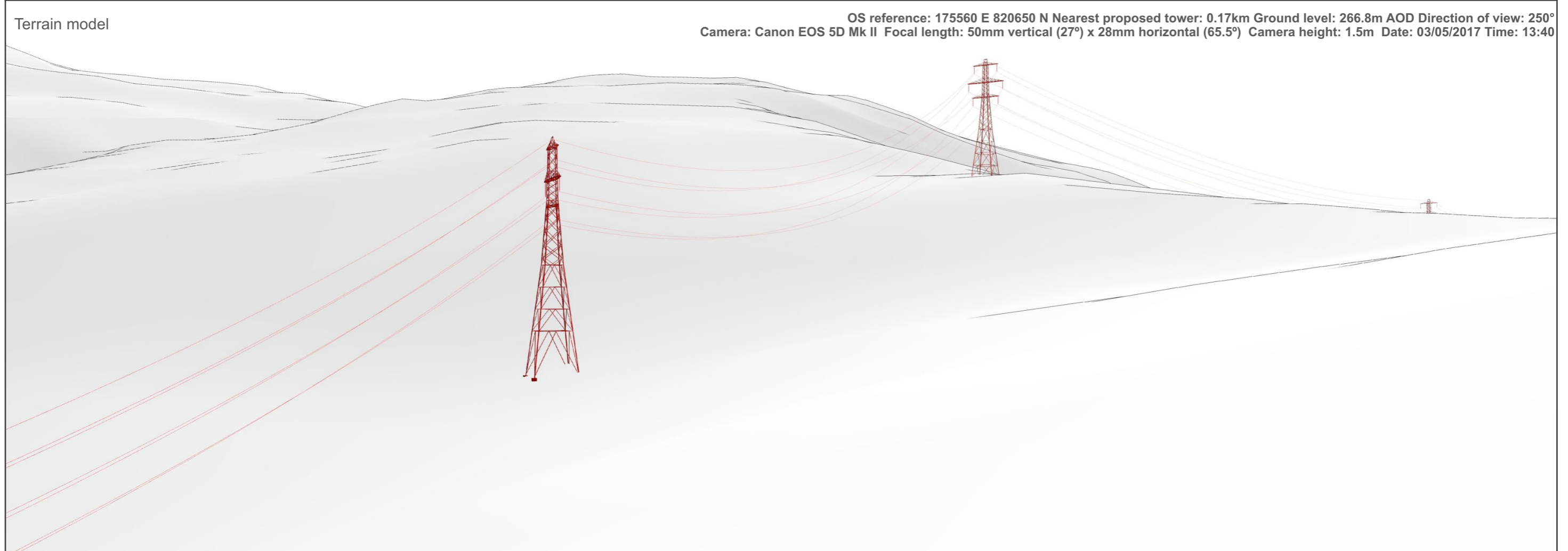
Figure AI-B-3.4b - Visualisation Location 3-4: Bealach Udal (Alternative Viewing Angle)

OS reference: 175560 E 820650 N Nearest proposed tower: 0.17km Ground level: 266.8m AOD Direction of view: 250°
Camera: Canon EOS 5D Mk II Focal length: 50mm vertical (27°) x 28mm horizontal (65.5°) Camera height: 1.5m Date: 03/05/2017 Time: 13:40
Drawing No. - 119026-D-AI-V4-3.4B-C-1.0.0 Date - 30.01.2023

The images contained on this page and the following are not representative of scale and distance from the actual viewpoint and shows the proposed development in its wider landscape context only.



Existing View



OS reference: 175560 E 820650 N Nearest proposed tower: 0.17km Ground level: 266.8m AOD Direction of view: 250°
Camera: Canon EOS 5D Mk II Focal length: 50mm vertical (27°) x 28mm horizontal (65.5°) Camera height: 1.5m Date: 03/05/2017 Time: 13:40

Figure AI-B-3.4c - Visualisation Location 3-4: Bealach Udal (Alternative Viewing Angle)



Photomontage

Figure AI-B-3.4d - Visualisation Location 3-4: Bealach Udal (Alternative Viewing Angle)

When viewed at a comfortable arms length (approx. 500mm), this printed image is representative of our detailed central vision, but is not representative of scale and distance.

OS reference: 175560 E 820650 N Nearest proposed tower: 0.17km Ground level: 266.8m AOD Direction of view: 250°
Camera: Canon EOS 5D Mk II Focal length: 50mm Camera height: 1.5m Date: 03/05/2017 Time: 13:40

Drawing No. - 119026-D-AI-V4-3.4D-1.0.0 Date - 30.01.2023



Figure AI-B-3.4e - Visualisation Location 3-4: Bealach Udal (Alternative Viewing Angle)
This image should be viewed at a comfortable arms length (approx 500mm)

OS reference: 175560 E 820650 N Nearest proposed tower: 0.17km Ground level: 266.8m AOD Direction of view: 250°
Camera: Canon EOS 5D Mk II Focal length: 75mm Camera height: 1.5m Date: 03/05/2017 Time: 13:40
Drawing No. - 119026-D-AI-V4-3.4E-1.0.0 Date - 30.01.2023