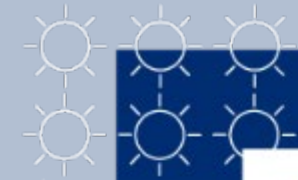


Bingally 400kV Substation Community Liaison Group

Meeting 02:
23 June 2026 – Cannich Hall

Agenda:

1. Confirmation of Mins and TOR
2. Actions from Last Meeting
3. Project Update
4. Environmental Considerations and Processes
5. Fire Safety Considerations and Processes
6. Construction Traffic Management

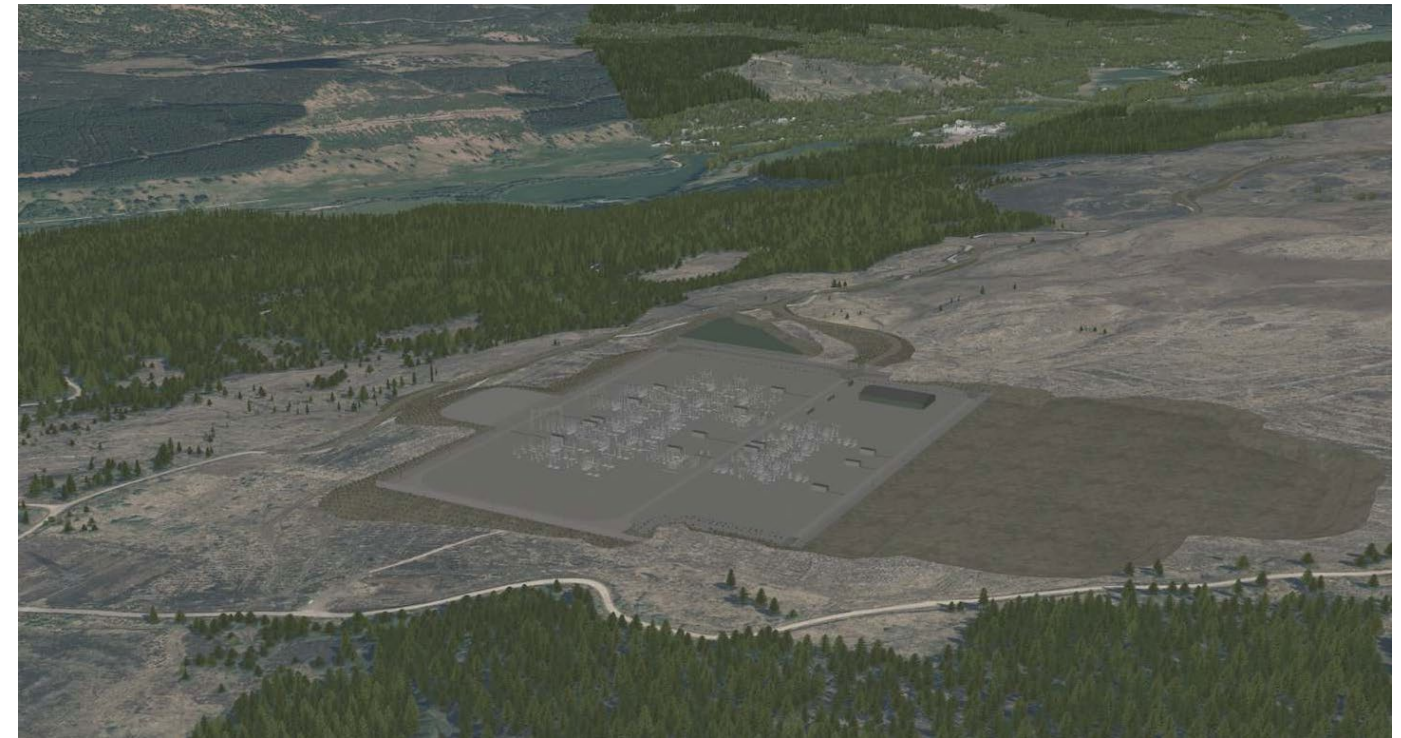


Actions from Last Meeting

NumberSSEN	Action / Update	Owner	Open/Closed	Update
1	Consider request re transcripts of meetings	SSEN Transmission	Open	<p>Request to refrain from utilisation of transcripts until such a time if deemed necessary due to:</p> <ul style="list-style-type: none"> - Ensuring minute not onerous for interested parties to read - Limitations re lack of wifi - Encouraging free speech without hesitation
2	Consider use of colours for site cabins to blend with landscape	BAM	Open	BAM commitment to address, more detail to share in Project Update
3	Review options to reduce visual impact of bellmouth and entrance	BAM	Open	BAM commitment to address, more detail in Project Update
4	Confirm approach to managing traffic around school times	SSEN Transmission / BAM	Open	Covering/looking for input in CTMP session at end of meeting
5	Review condition and potential improvement of local car park, including EV charging	SSEN Transmission	Open	Committing to minimum of addressing potholes, 'gold star' service (tarring and Evs) will need further exploration and unlikely to occur short term – but will continue to explore this
6	Confirm communication routes and update contact details when CLM changes	SSEN Transmission	Open	Will be actioned next month, new CLM due to start w/c 06 June and will send out comms shortly thereafter once settled in
7	Explore feasibility of improved connectivity at hall (for hybrid meetings / transcription)	SSEN Transmission	Open	Spider speaker has been obtained, but wifi access requires further exploration (issue of signal)
8	Consider request regarding additional policing support	SSEN Transmission	Open	Determined that SSEN/BAM will not be able to fund due to being public resource, but will signpost to additional funding mechanisms (still wouldn't fund resource but adjacent to public services)

Project Update

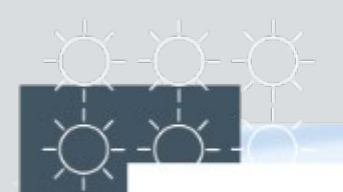
- **11 out of 21 pre-commencement conditions** have been **satisfied** to date – ongoing discussion with The Highland Council Case Officer.
- Key feedback from The Highland Council is still required for the Construction Traffic Management Plan condition.
- Start on Site: Still targeting **Summer 26**.



Environmental Considerations and Processes

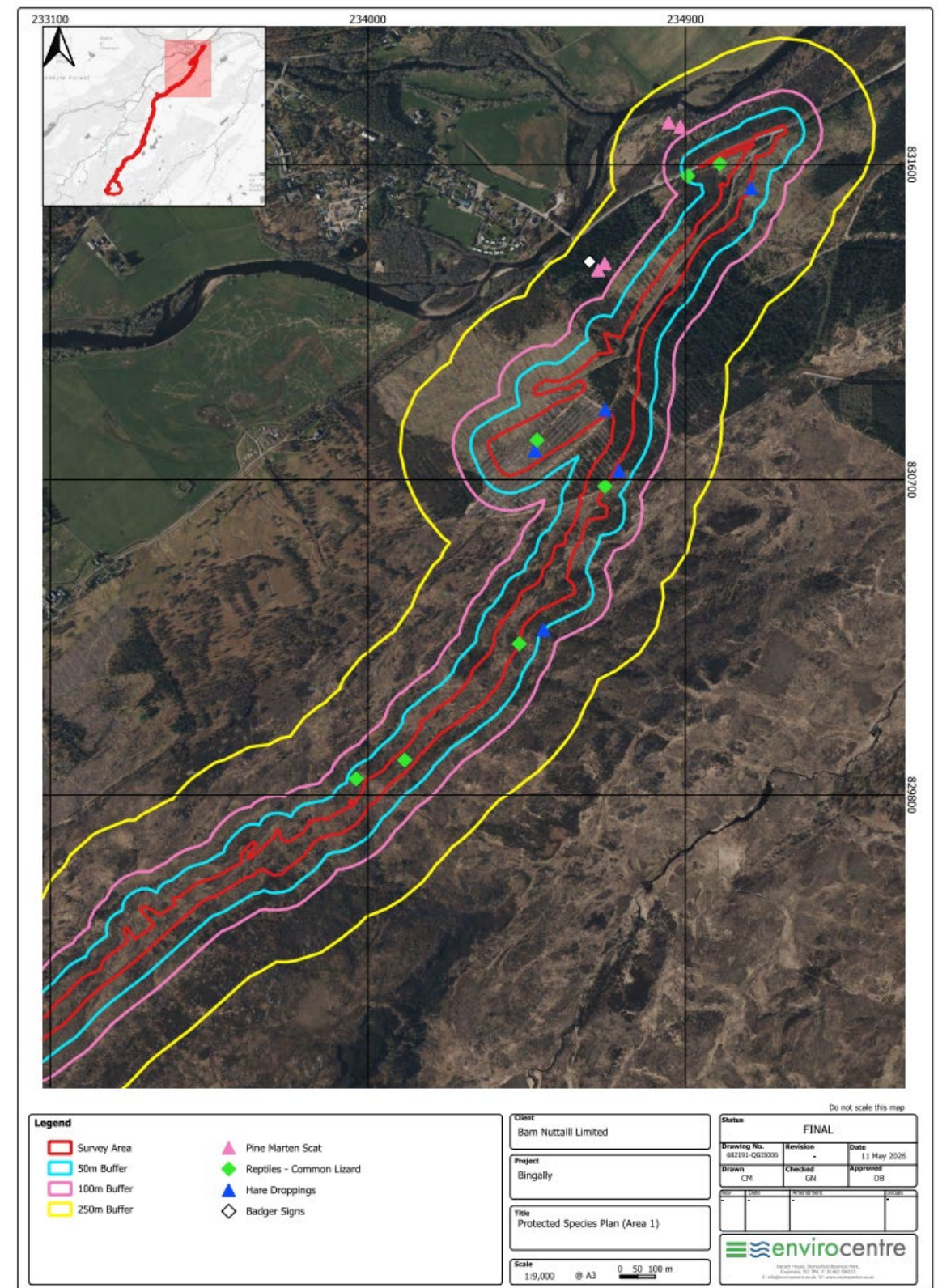
How we work to protect the local environment during construction

**James Elliott –
Consents and Environment Manager**



Pre-Construction Ecological Surveys

- Field surveys were undertaken by EnviroCentre during the last week in April.
- The site was assessed for a range of protected and notable species.
- Evidence of badger, otter, pine marten, mountain hare, birds, amphibians and reptiles were observed during the survey.
- Bat surveys undertaken separately by HED Ltd and are ongoing.
- Report includes a list of mitigation measures which will be followed during construction



Project Environmental Resource

There will be a team of environmental professionals supervising and auditing the project from start to finish. Roles include:

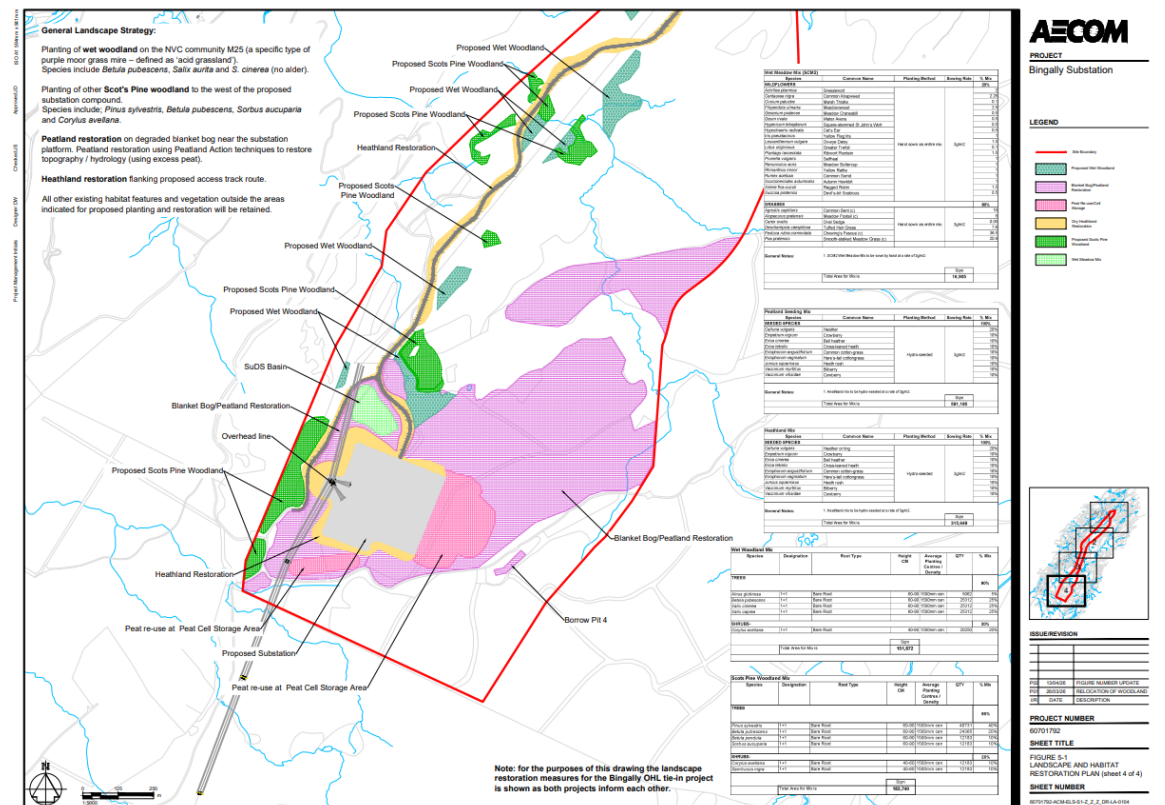
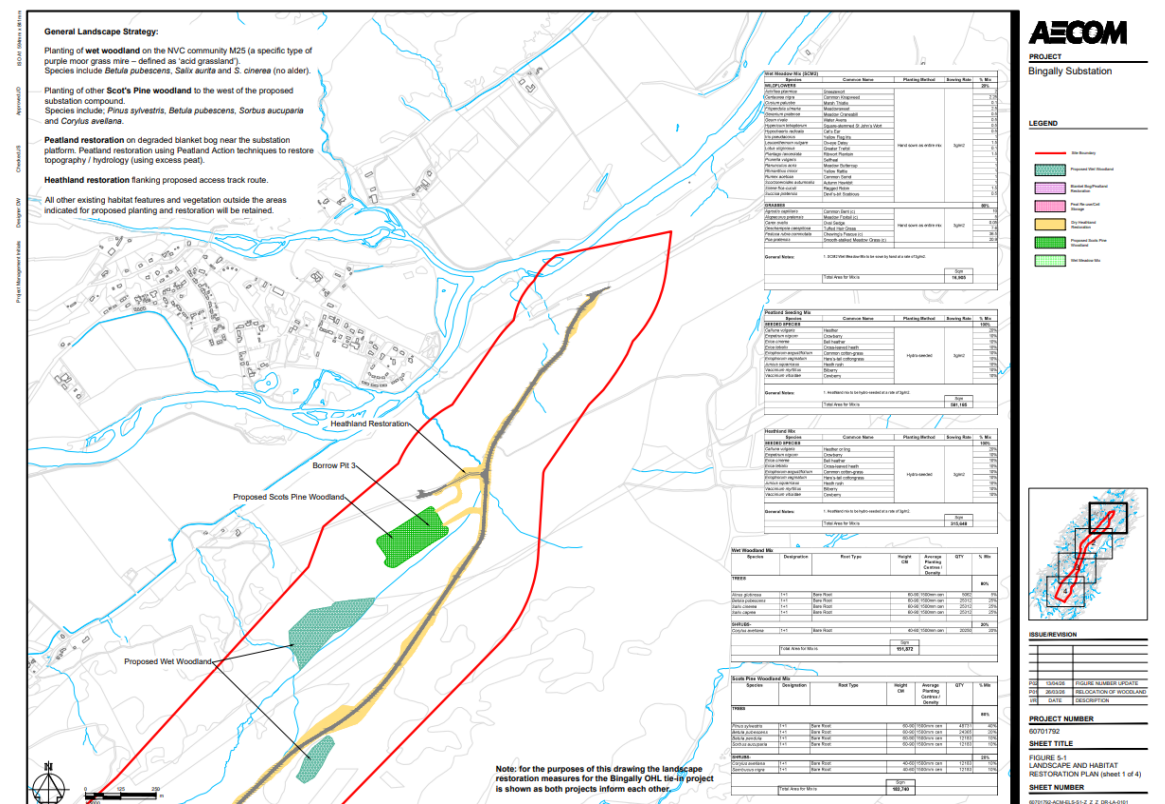
- Principal Contractor's Ecological / Environmental Clerk of Works (ECoW/ EnvCow)
- Independent EnvCoW
- SSEN Consents & Environment Manager
- Environmental Specialists



Biodiversity Net Gain (BNG)

- SSENT has made commitments to deliver 10% biodiversity net gain (BNG) and leave a positive legacy for nature on all projects gaining consent.
- Where this cannot be delivered on-site, SSENT must identify off-site opportunities for biodiversity enhancement.
- We follow the mitigation hierarchy: Avoid – Minimise – Restore – Offset.
- BNG Assessment report calculates baseline Biodiversity Units (BUs), predicts post-development BUs and proposes habitat creation and enhancements required to improve biodiversity past the baseline.
- Latest BNG assessment predicts 118 BUs required offsite. Our Nature Team are working local landowners to deliver restoration close to our infrastructure whilst also aiming to deliver landscape scale restoration.

Figures available from Landscape and Habitat Management Plan: [download here](#)



Fire Safety Considerations and Processes

Use of safeguarding technology and equipment

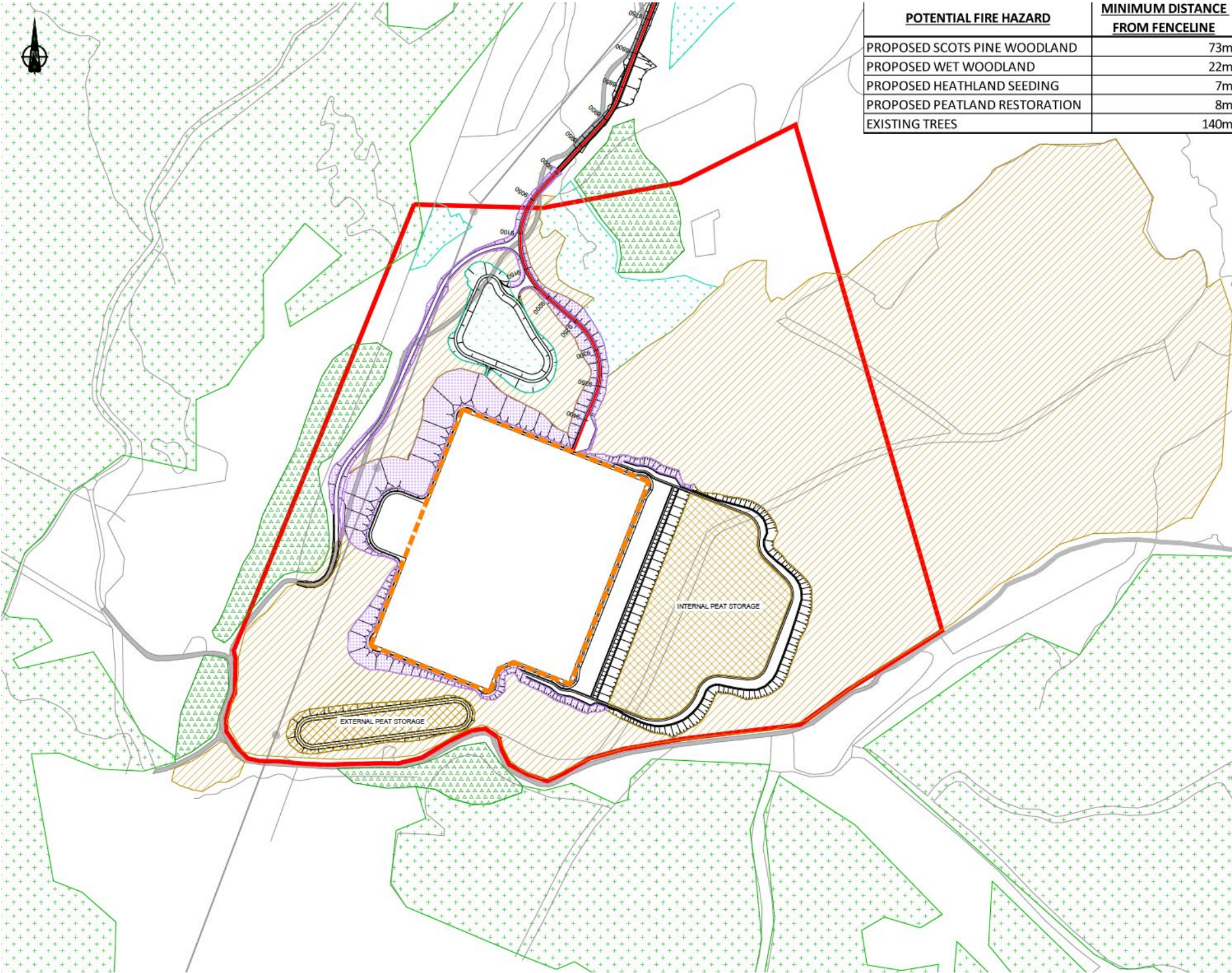
**Matthew Boyle –
Civil Project Engineer**



Bingally Substation

Legend	Potential Fire Hazard	Minimum Distance from Fenceline
DG	Diesel Generator	15m
AVR 1	Automatic Voltage Regulator 1	88m
AVR 2	Automatic Voltage Regulator 2	55m
SGT 1	Super Grid Transformer 1	68m
SGT 2	Super Grid Transformer 2	109m
ET 1	Earthing Transformer 1	58m
ET 2	Earthing Transformer 2	117m

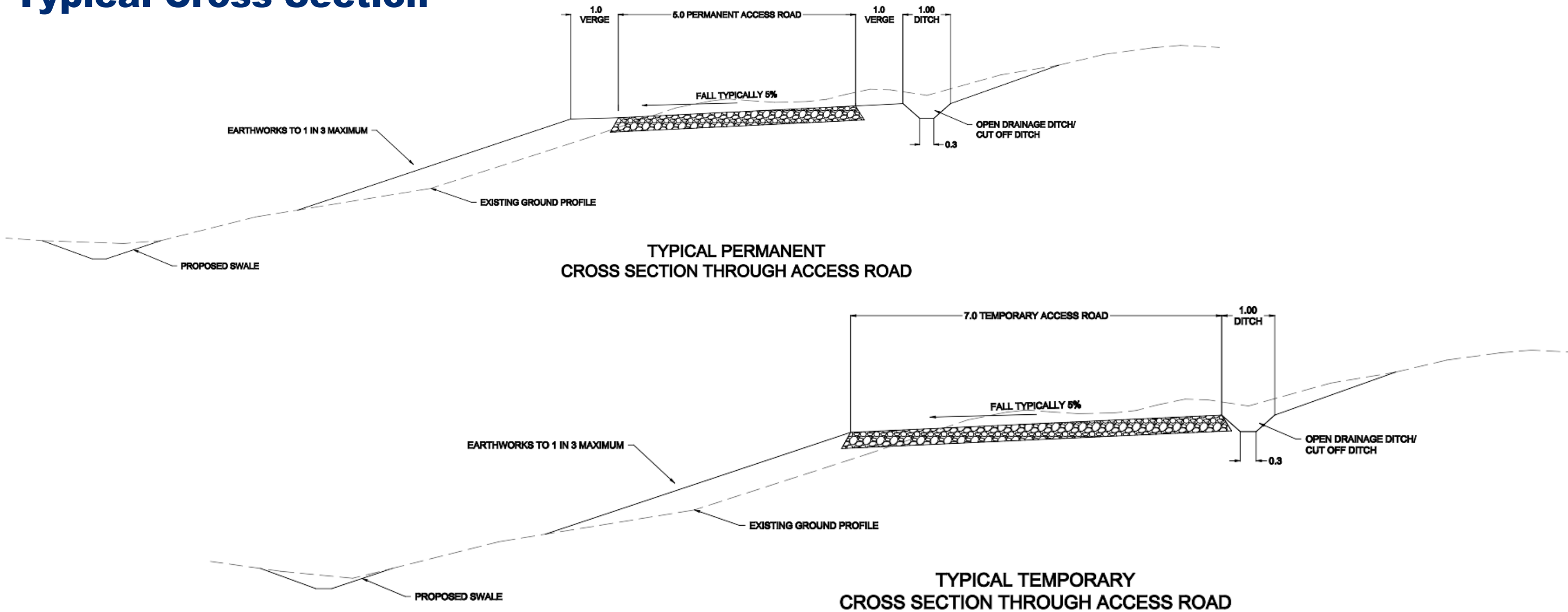
KEY:	
SSE PURCHASE AREA	
EARTHWORKS SLOPE	
PROPOSED SCOTS PINE WOODLAND	
PROPOSED WET WOODLAND	
PROPOSED HEATHLAND SEEDING	
PROPOSED PEATLAND RESTORATION	
PROPOSED CATOTELM PEAT RESTORATION	
EXISTING TREES	
5m PLATFORM FENCELINE PERIMETER	



POTENTIAL FIRE HAZARD	MINIMUM DISTANCE FROM FENCELINE
PROPOSED SCOTS PINE WOODLAND	73m
PROPOSED WET WOODLAND	22m
PROPOSED HEATHLAND SEEDING	7m
PROPOSED PEATLAND RESTORATION	8m
EXISTING TREES	140m

Bingally Access Track

Typical Cross Section



Construction Traffic Management

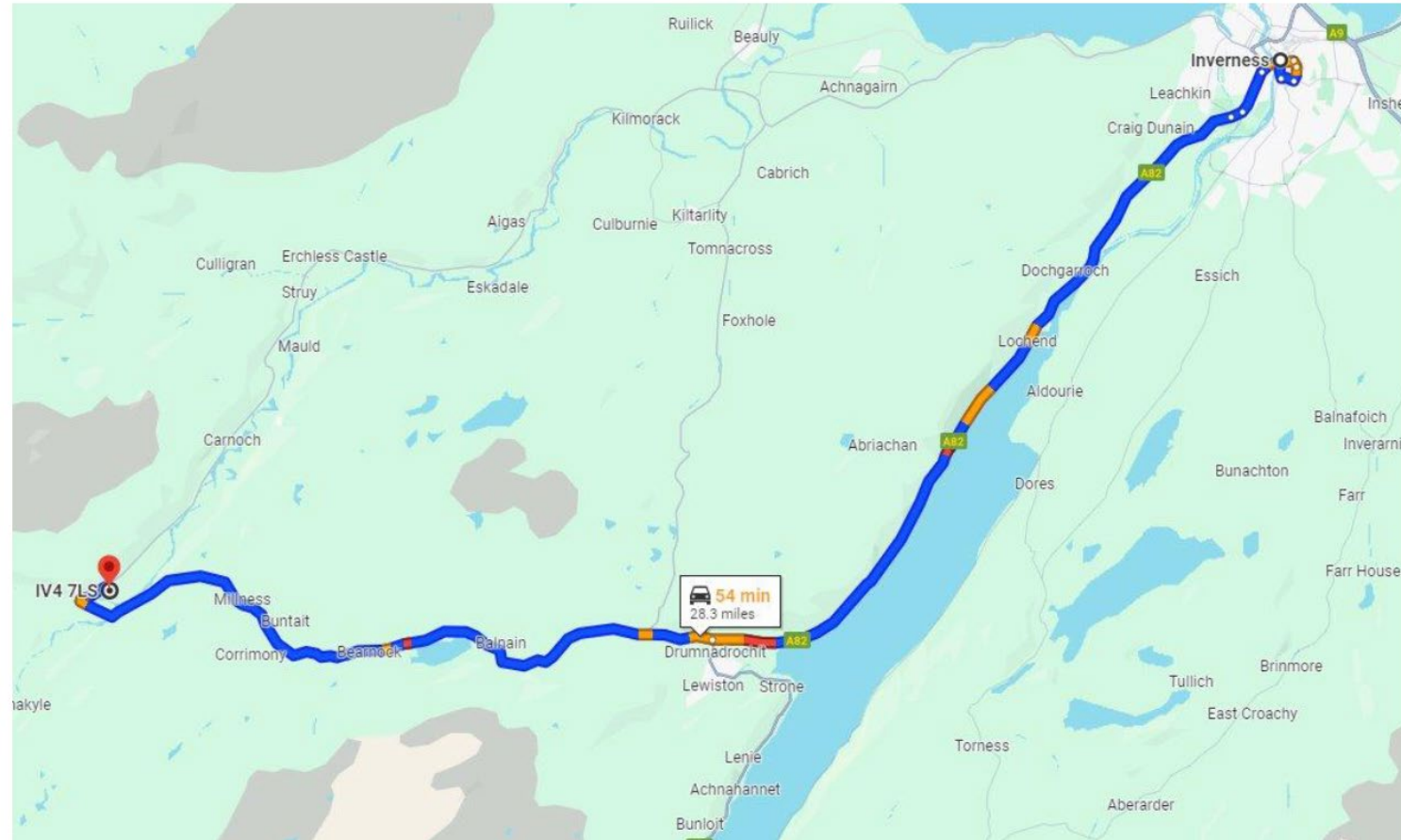
Taking local feedback into consideration of plans

**Keith Gibson–
Project Manager, BAM**



Bingally Substation

Traffic Management

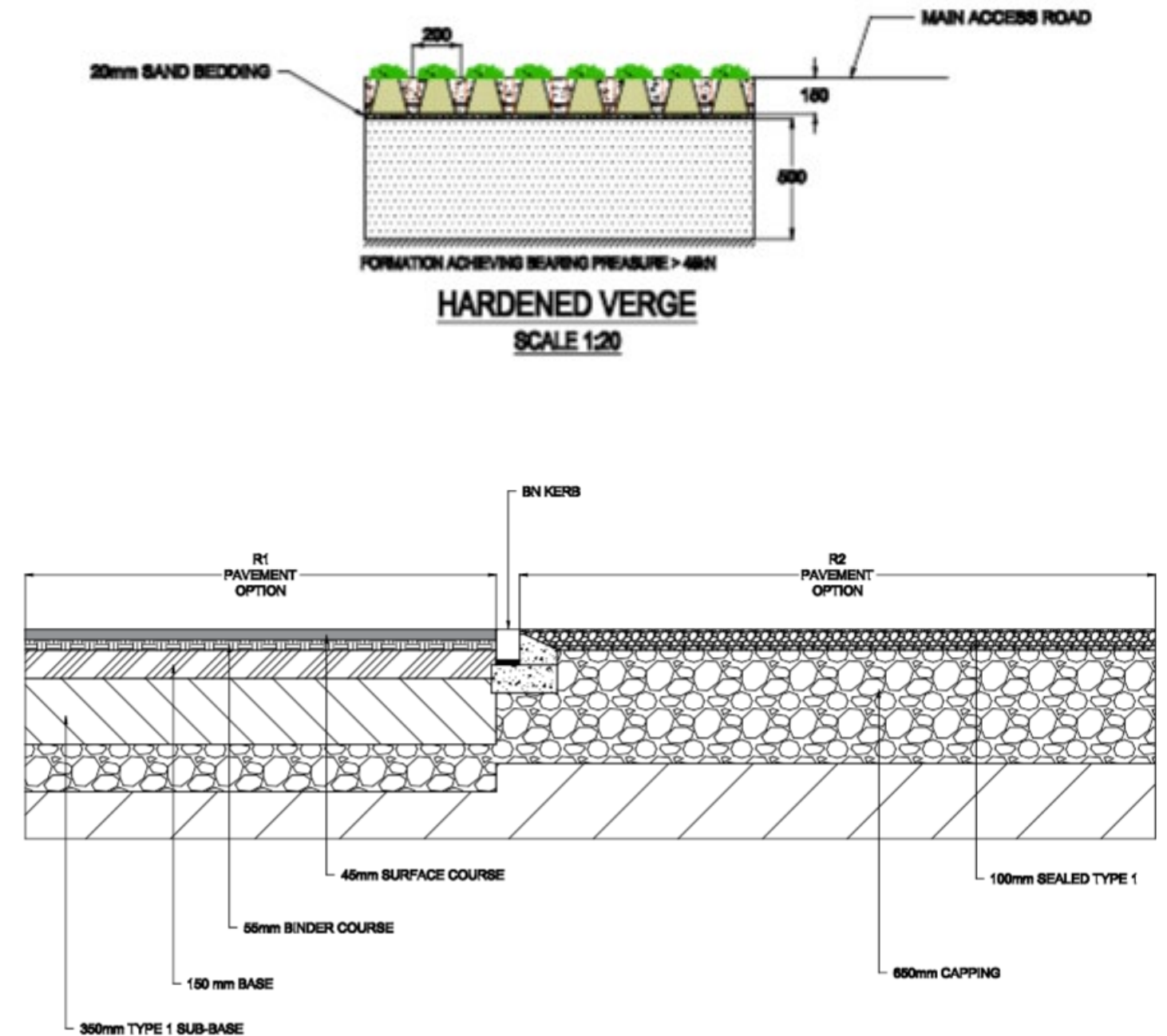
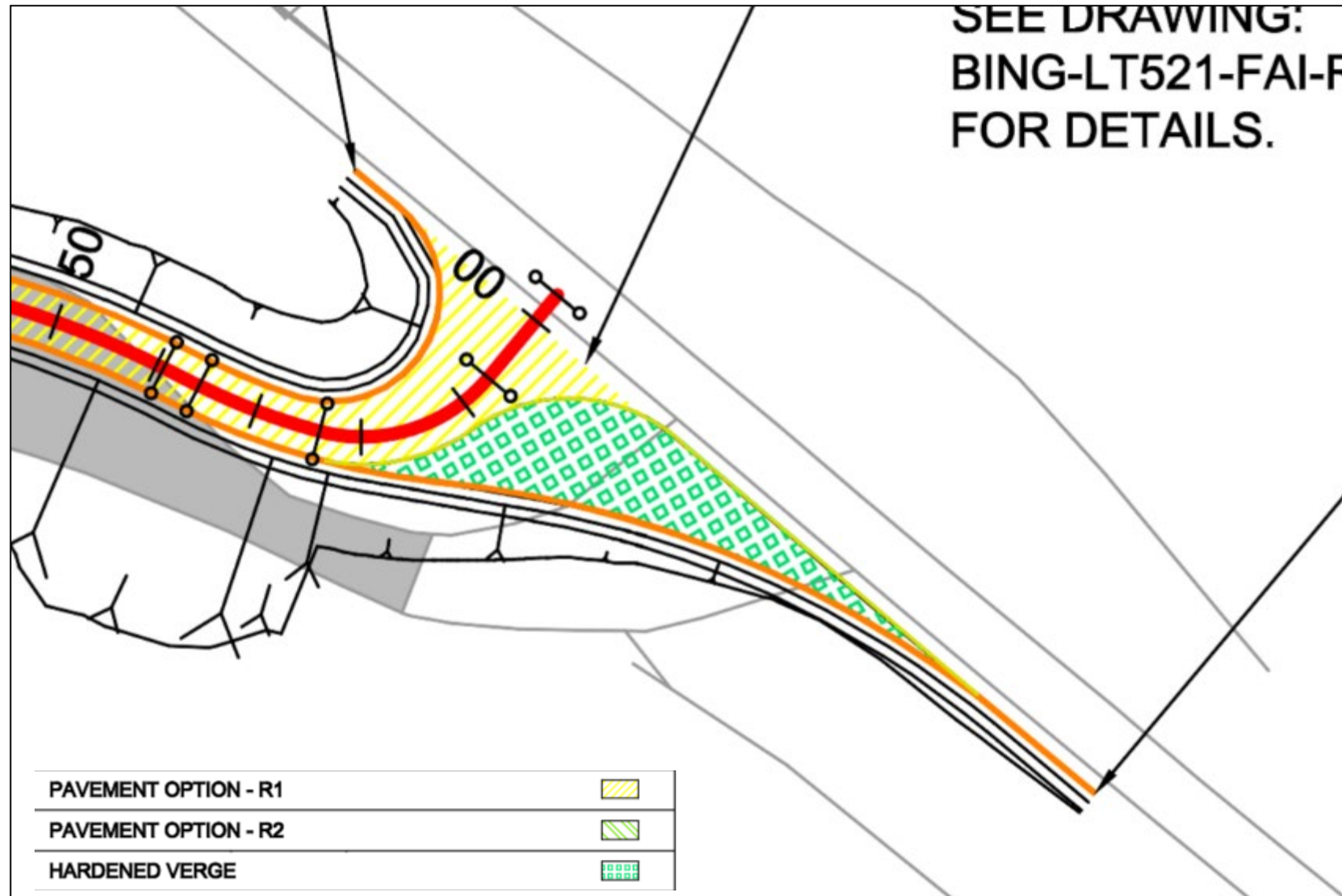


- General construction traffic will travel south on the A82 to Drumnadrochit then turn onto the A831 west towards Cannich.
- The site entrance will be widened to allow traffic to turn left into the site.
- Traffic will then be able to turn on site and exit making a right turn onto the A831 east towards Drumnadrochit.



Bingally Substation

Bellmouth



TIE IN WITH THE SURFACED TO UNSURFACED TRACK

SCALE - 1:20

Bingally Substation

Visuals



Bingally Substation

Visuals



Scan QR code for link to 360° view from Cannich Shinty Pitch OR click this link:

[Cannich Shinty Pitch | 360° photo](#)