

General Landscape Strategy:

Planting of **wet woodland** on the NVC community M25 (a specific type of purple moor grass mire – defined as ‘acid grassland’).
Species include *Betula pubescens*, *Salix aurita* and *S. cinerea* (no alder).

Planting of other **Scot's Pine woodland** to the west of the proposed substation compound.
Species include; *Pinus sylvestris*, *Betula pubescens*, *Sorbus aucuparia* and *Corylus avellana*.

Peatland restoration on degraded blanket bog near the substation platform. Peatland restoration using Peatland Action techniques to restore topography / hydrology (using excess peat).

Heathland restoration flanking proposed access track route.

All other areas not shown on the key will remain unaltered.

| Wet Meadow Mix (SCM2) | | | | |
|----------------------------------|---------------------------------|-------------------------|-------------|---|
| Species | Common Name | Planting Method | Sowing Rate | % Mix |
| WILDFLOWERS | | | | 20% |
| <i>Achillea ptarmica</i> | Sneezewort | Hand sown as entire mix | 3g/m2 | 2 |
| <i>Centaurea nigra</i> | Common Knapweed | | | 2.25 |
| <i>Cirsium palustre</i> | Marsh Thistle | | | 0.1 |
| <i>Filipendula ulmaria</i> | Meadowsweet | | | 2.5 |
| <i>Geranium pratense</i> | Meadow Cranesbill | | | 0.5 |
| <i>Geum rivale</i> | Water Avens | | | 0.5 |
| <i>Hypericum tetrapetrum</i> | Square-stemmed St John's Wort | | | 0.5 |
| <i>Hypochaeris radicata</i> | Cat's Ear | | | 0.5 |
| <i>Iris pseudacorus</i> | Yellow Flag Iris | | | 1 |
| <i>Leucanthemum vulgare</i> | Ox-eye Daisy | | | 1.5 |
| <i>Lotus uliginosus</i> | Greater Trefoil | | | 0.1 |
| <i>Plantago lanceolata</i> | Ribwort Plantain | | | 1.5 |
| <i>Prunella vulgaris</i> | Selfheal | | | 1 |
| <i>Ranunculus acris</i> | Meadow Buttercup | | | 1 |
| <i>Rhinanthus minor</i> | Yellow Rattle | | | 1 |
| <i>Rumex acetosa</i> | Common Sorrel | | | 1 |
| <i>Scorzoneroidea autumnalis</i> | Autumn Hawkbit | | | 1 |
| <i>Silene flos-cuculi</i> | Ragged Robin | | | 1.5 |
| <i>Succisa pratensis</i> | Devil's-bit Scabious | | | 0.5 |
| GRASSES | | | | 80% |
| <i>Agrostis capillaris</i> | Common Bent (c) | Hand sown as entire mix | 3g/m2 | 10 |
| <i>Alopecurus pratensis</i> | Meadow Foxtail (c) | | | 5 |
| <i>Carex ovalis</i> | Oval Sedge | | | 0.05 |
| <i>Deschampsia caespitosa</i> | Tufted Hair Grass | | | 7.6 |
| <i>Festuca rubra commutata</i> | Chewing's Fescue (c) | | | 36.5 |
| <i>Poa pratensis</i> | Smooth-stalked Meadow Grass (c) | | | 20.9 |
| General Notes: | | | | 1. SCM2 Wet Meadow Mix to be sown by hand at a rate of 3g/m2. |
| | | | Sqm | |
| Total Area for Mix is | | | 25,426 | |

| Peatland Seeding Mix | | | | |
|---|-------------------------|-----------------|-------------|-------|
| Species | Common Name | Planting Method | Sowing Rate | % Mix |
| SEEDED SPECIES | | | | 100% |
| <i>Calluna vulgaris</i> | Heather | Hydro-seeded | 3g/m2 | 20% |
| <i>Empetrum nigrum</i> | Crowberry | | | 10% |
| <i>Erica cinerea</i> | Bell heather | | | 10% |
| <i>Erica tetralix</i> | Cross-leaved heath | | | 10% |
| <i>Eriophorum angustifolium</i> | Common cotton-grass | | | 10% |
| <i>Eriophorum vaginatum</i> | Hare's-tail cottongrass | | | 10% |
| <i>Juncus squarrosus</i> | Heath rush | | | 10% |
| <i>Vaccinium myrtillus</i> | Bilberry | | | 10% |
| <i>Vaccinium vitisidæ</i> | Cowberry | | | 10% |
| General Notes: | | | | |
| 1. Heathland mix to be hydro-seeded at a rate of 3g/m2. | | | | |
| | | | Sqm | |
| Total Area for Mix is | | | 100,464 | |

| Heathland Mix | | | | |
|---|-------------------------|-----------------|-------------|-------|
| Species | Common Name | Planting Method | Sowing Rate | % Mix |
| SEEDED SPECIES | | | | 100% |
| <i>Calluna vulgaris</i> | Heather or ling | Hydro-seeded | 3g/m2 | 20% |
| <i>Empetrum nigrum</i> | Crowberry | | | 10% |
| <i>Erica cinerea</i> | Bell heather | | | 10% |
| <i>Erica tetralix</i> | Cross-leaved heath | | | 10% |
| <i>Eriophorum angustifolium</i> | Common cotton-grass | | | 10% |
| <i>Eriophorum vaginatum</i> | Hare's-tail cottongrass | | | 10% |
| <i>Juncus squarrosus</i> | Heath rush | | | 10% |
| <i>Vaccinium myrtillus</i> | Bilberry | | | 10% |
| <i>Vaccinium vitisidæ</i> | Cowberry | | | 10% |
| General Notes: | | | | |
| 1. Heathland mix to be hydro-seeded at a rate of 3g/m2. | | | | |
| | | | Sqm | |
| Total Area for Mix is | | | 172,009 | |

| Wet Woodland Mix | | | | | | |
|-------------------------|-------------|-----------|-----------|------------------------------------|-------|-------|
| Species | Designation | Root Type | Height CM | Average Planting Centres / Density | QTY | % Mix |
| TREES | | | | | | 80% |
| <i>Alnus glutinosa</i> | 1+1 | Bare Root | 60-90 | 1500mm cen | 42439 | 20% |
| <i>Betula pubescens</i> | 1+1 | Bare Root | 60-90 | 1500mm cen | 42439 | 20% |
| <i>Salix cinerea</i> | 1+1 | Bare Root | 60-90 | 1500mm cen | 42439 | 20% |
| <i>Salix caprea</i> | 1+1 | Bare Root | 60-90 | 1500mm cen | 42439 | 20% |
| SHRUBS- | | | | | | 20% |
| <i>Corylus avellana</i> | 1+1 | Bare Root | 40-60 | 1500mm cen | 42439 | 20% |
| | | | Sqm | | | |
| Total Area for Mix is | | | 318,296 | | | |

| Scots Pine Woodland Mix | | | | | | |
|-------------------------|-------------|-----------|-----------|------------------------------------|-------|-------|
| Species | Designation | Root Type | Height CM | Average Planting Centres / Density | QTY | % Mix |
| TREES | | | | | | 80% |
| <i>Pinus sylvestris</i> | 1+1 | Bare Root | 60-90 | 1500mm cen | 23461 | 40% |
| <i>Betula pubescens</i> | 1+1 | Bare Root | 60-90 | 1500mm cen | 8798 | 15% |
| <i>Betula pendula</i> | 1+1 | Bare Root | 60-90 | 1500mm cen | 5865 | 10% |
| <i>Sorbus aucuparia</i> | 1+1 | Bare Root | 60-90 | 1500mm cen | 5865 | 10% |
| SHRUBS- | | | | | | 20% |
| <i>Corylus avellana</i> | 1+1 | Bare Root | 40-60 | 1500mm cen | 5865 | 10% |
| <i>Sambucus nigra</i> | 1+1 | Bare Root | 40-60 | 1500mm cen | 5865 | 10% |
| | | | Sqm | | | |
| Total Area for Mix is | | | 87,978 | | | |



CONSULTANT

AECOM
100 Embankment
Cathedral Approach
Manchester
M3 7FB
Fax +44 (0)161 601 1799
Tel +44 (0)161 601 1700
www.aecom.com

GENERAL NOTES

The landscape plan is to be finalised upon the completion of NVC ecology survey. All information in the existing drawing is based upon the draft findings of the survey.

LEGEND

- Site Boundary
- Proposed Wet Woodland
- Peatland Restoration
- Heathland Restoration
- Proposed Other Scot's Pine Woodland
- SUDS Pond
- Wet Meadow Mix

ISSUE/REVISION

| P05 | 20/02/25 | OHL XREF ADDED |
|-----|----------|---------------------------|
| P04 | 14/02/25 | EDIT TO PEATLAND HATCH |
| P03 | 13/02/25 | FURTHER EDIT TO MITIGATIC |
| P02 | 12/02/25 | FURTHER EDIT TO MITIGATIC |
| P01 | 17/07/24 | DRAFT ISSUE |
| I/R | DATE | DESCRIPTION |

PROJECT NUMBER

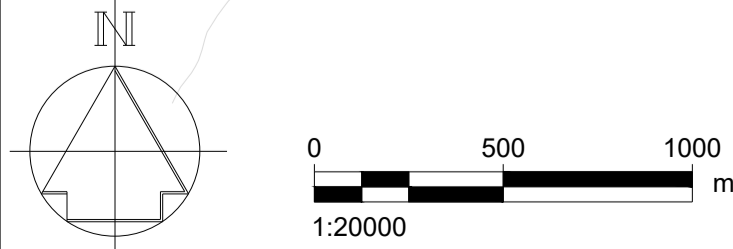
60701792

SHEET TITLE

LANDSCAPE RESTORATION PLAN

SHEET NUMBER

60701792-ACM-ELS-S1-Z_Z_DR-LA-0001



Note: for the purposes of this drawing the landscape restoration measures for the Bingally OHL tie-in project is shown as both projects inform each other.