



Scottish & Southern
Electricity Networks

TRANSMISSION

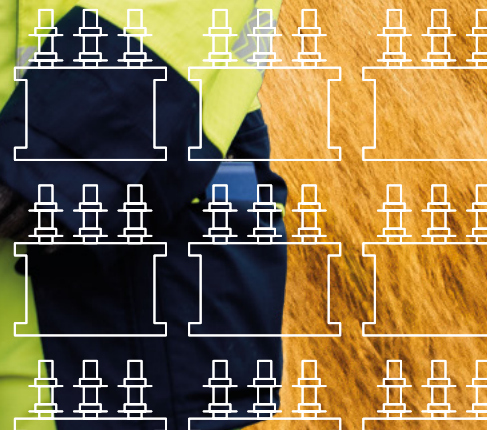
Blarghour Wind Farm Connection Project

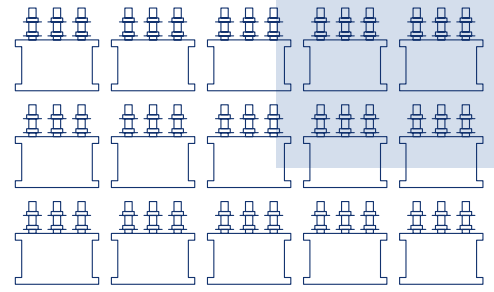
Alignment consultation

June – July 2026



ssen-transmission.co.uk/blarghour





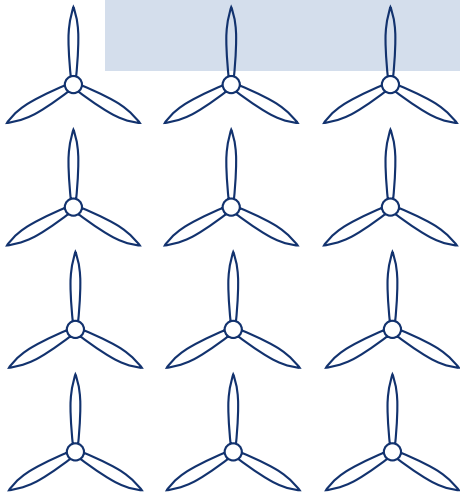
Contents

Powering change together	03	Engineering	10
Blarghour Wind Farm Connection project	04	Preferred route alignment	11
Project timeline	06	What else is happening in Argyll?	12
Alignment selection process	07	Notes	13
Alignment options	08	Have your say	14
Environment sensitivities	09	Your feedback	15

Share your views with us:

We are launching public consultations to seek feedback on the alignment options on Blarghour Wind Farm Connection project in Argyll and Bute.

Information on our proposals is available within this consultation booklet and on the project webpage.



Powering change together

If we want to deliver on clean power and energy security targets and provide power for future generations, upgrade to Scotland's electricity transmission infrastructure is needed.

The shift to a cleaner, more sustainable future is about more than tackling the impact of climate change, it's about ensuring that future generations can thrive.

Countries around the world are investing in their energy infrastructure to support increasing electricity demands and to deliver on clean power targets and the UK is leading the way in building a modern, sustainable energy system for the future.



We all have a part to play

The UK and Scottish governments have set ambitious energy security and clean power targets, and we all have a part to play in delivering them.

At SSEN Transmission, we work closely with the National Energy System Operator (NESO) to connect vast renewable energy resources - like solar, wind, hydro and marine generation - to areas of demand across the country. Scotland will play a particularly big role in meeting increasing electricity demand.

But there is more to be done. By 2050, the north of Scotland is expected to contribute more than 50GW of low carbon power to the GB energy system. Today, the region has around 11GW of renewable generation connected to the network.

At SSEN Transmission, it is our role to build the energy system of the future. To do that, we are planning to invest around **£29 billion** in the coming years to upgrade the electricity transmission network in the north of Scotland. It's an investment that will unlock cleaner, more secure energy for homes and businesses now, and for generations to come. **By 2050, annual electricity demand is expected to at least double** - our investment will support the connection of more clean power to meet that demand to the GB electricity network, supporting up to **17,500 jobs in Scotland**, with more than **8,000** of those in the north of Scotland, along the way.

Who we are

We are responsible for maintaining and investing in the electricity transmission network in the north of Scotland. We are part of SSE plc, one of the world's leading energy companies with a rich heritage in Scotland that dates back more than 80 years. We are also closely regulated by the GB energy regulator Ofgem, who determines how much revenue we are allowed to earn for constructing, maintaining and renovating our transmission network.

What we do

We manage the electricity network across our region which covers a quarter of the UK's land mass, crossing some of the country's most challenging terrain. We connect renewable energy sources to our network in the north of Scotland and then transport it to where it needs to be. From underground/subsea cables and overhead lines to electricity substations, our network keeps your lights on all year round.

Working with you

We understand that the work we do can have an impact on communities and we are committed to minimising our impacts and maximising all the benefits that our developments can bring to your area. To do that we provide all the information you need to know about our plans and how they will impact communities like yours. The way we consult is also a two-way street and we want to hear people's views, concerns, or ideas - and harness local knowledge - so that our work benefits communities today and long into the future. You can share your views with us at: ssen-transmission.co.uk/talk-to-us/contact-us/

Blarghour Wind Farm Connection project

Scottish and Southern Electricity Networks Transmission (SSEN Transmission) is proposing to construct and operate a 132kV overhead line (OHL) to connect the consented Blarghour wind farm to the newly constructed Creag Dhubh substation

About the project

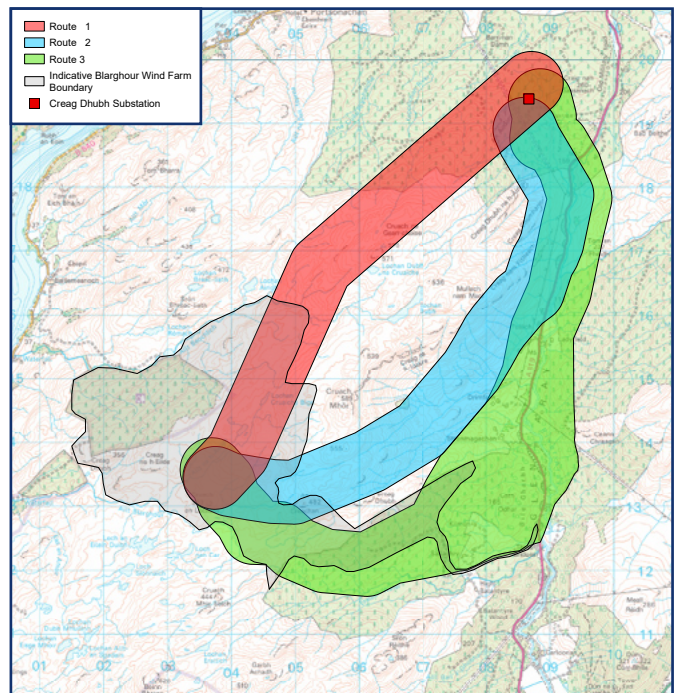
Coriolis Energy and ESB are the developers for Blarghour wind farm consisting of 14 turbines up to 180m in height, with an installed capacity of 84MW. To connect Blarghour wind farm, SSEN Transmission are proposing to construct and operate a single circuit 132 kV OHL, with downleads at either end to connect directly into Blarghour Wind Farm substation and Creag Dhubh substation.

The Proposed Development will comprise the following:

- Installation of 1 x 132kV line disconnector on the Creag Dhubh side of the transformer circuit breaker at Blarghour substation;
- Construction of approximately 12km of single circuit 132kV OHL, comprising trident poles. The final support type selection is generally influenced by three main factors: altitude, weather and the local topography. At this stage, it is anticipated that wooden poles are likely to be used;
- The low-profile trident H wood poles would have a nominal height of approximately 11 - 17m, averaging at 14m (including insulators and support). The OHL would be composed of a combination of suspension poles, angle / tension poles, failure containment poles and terminal poles;
- Woodland removal will be identified after the Preferred Alignment route has been identified, undertaken in consultation with stakeholders, and managed to ensure safe operation, environmental compliance, and minimal impact based on woodland type; and,
- A construction access strategy will be developed following alignment confirmation, prioritising use and upgrade of existing tracks, low-impact temporary solutions, and permanent access where justified, with approaches adapted to ground conditions and woodland sensitivity.

The Proposed Development will likely require Section 37 consent supported by an Environmental Impact Assessment (EIA). Submission of the application to the Energy Consents Unit (ECU) of the Scottish Government is currently planned for November 2026.

Previous consultations



In March 2026 we presented three potential route options for the project. The consultation period opened on 2 March 2026 and continued until 2 April 2026.

The Consultation Document concluded that Route 3 (shown in green in the figure above) was the most favourable route due to offering the most deliverable solution overall, providing the best balance of environmental, engineering and economic considerations. Route 3 benefits from improved access provision, reduced construction and maintenance risk, and the lowest capital cost, with environmental effects capable of being managed through careful alignment selection and subsequent detailed assessment.

The consultation process confirmed that Route 3 remained the the most favourable and it has been taken forward to the next stage of the development process.

This consultation

Overhead line routing is a balance between environmental, engineering and cost considerations, with stakeholder and public consultation comprising a key element of this process.

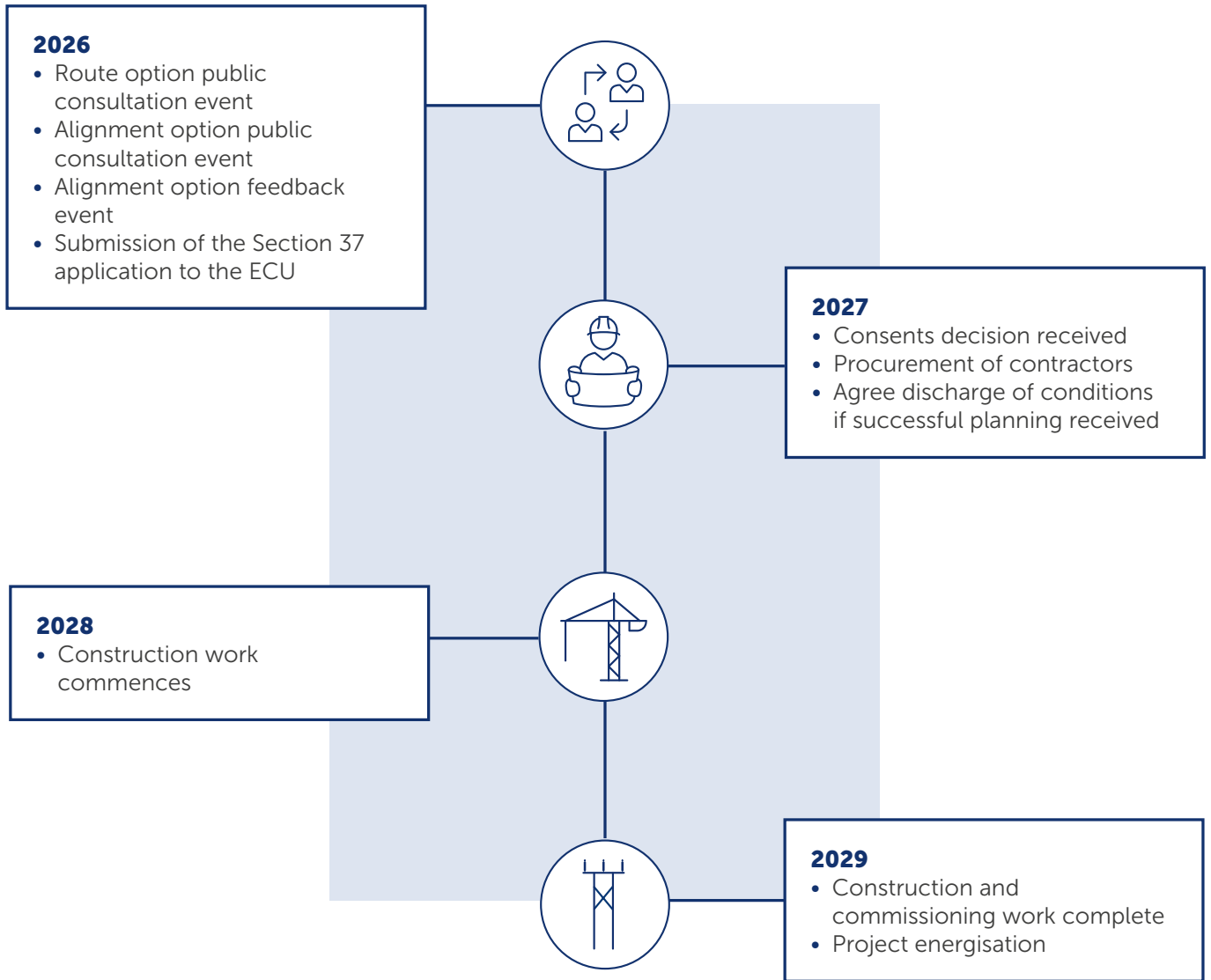
This project is at the alignment optioneering stage of development, and we are consulting with local stakeholders to provide an update on our proposals and to share considered alignment options and the potential alignment. We have identified a potential alignment on which we are keen to hear your views.

After receiving feedback from this consultation and carrying out further environmental and more detailed technical assessments to help us refine our proposal, we will confirm the selected alignment to take forward to a consent application.



Project timeline

*dates are subject to change.



Alignment selection process

The proposed route is Route 3. This route was identified and consulted on during the previous stage of the routing process and has since been taken forward into the alignment optioneering stage. Both alignment options currently under consideration are located within this proposed route.

There are a number of existing constraints within the Proposed Route that restrict the potential for alignment options such as the A819, the River Aray, the Inveraray to Crossraig 275kV overhead line, the new Taynult to Creag Dhubh 275kV overhead line (currently under construction), the proposed infrastructure associated with the Blarghour Wind Farm (ECU00004754), and the infrastructure associated with the consented Ladyfield Renewable Energy Park (ECU00003291).

Adequate safety clearance must be maintained between the proposed 132kV overhead line and other electrical infrastructure, roads, and waterways to ensure safety during construction, operation and maintenance.

Topography and ground conditions also pose further challenges.

As a result, for most of the 12 km length, there is only a single alignment proposed.

However, within the central section, two alignment options have been proposed to respond to different environmental constraints.



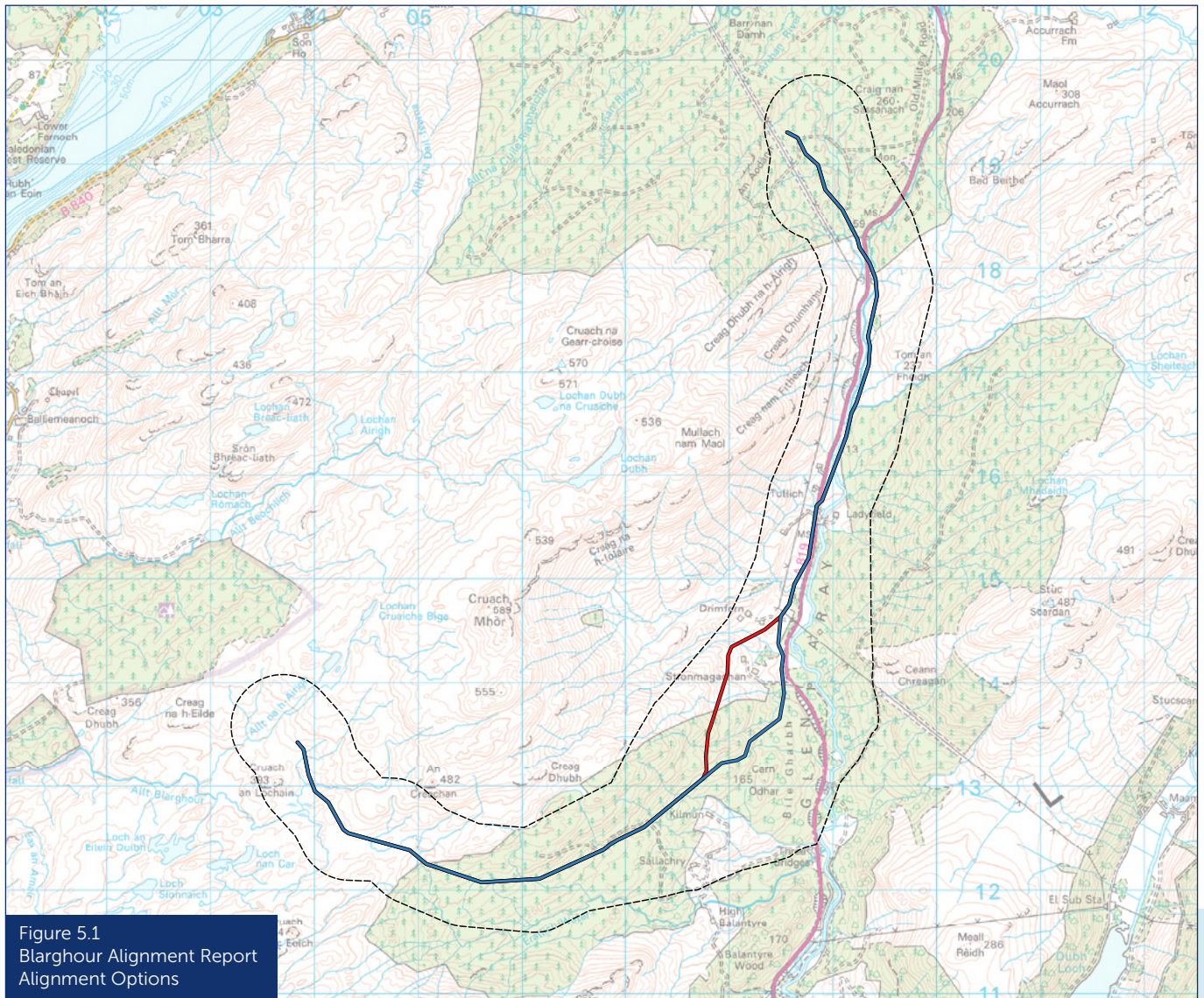
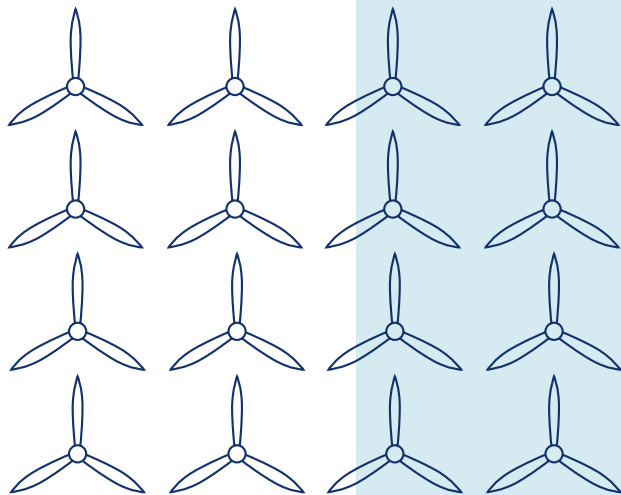


Figure 5.1
Blarghour Alignment Report
Alignment Options

Proposed Route Alignment Options Alignment 1 Alignment 2	
SCALE: See Scale Bar SIZE: A3 PROJECT: 0780330 DATE: 2026-04-24	VERSION: A02 DRAWN: JS CHECKED: KC APPROVED: KC
Figure 5.1 Blarghour Alignment Report Alignment Options	



Alignment options

What are the potential benefits and risks that differentiate the two options?

Alignment option 1	Alignment option 2
<p>Benefits</p> <ul style="list-style-type: none"> • Further away from A819 limiting visual impact to road users. • Further away from the River Aray reducing potential impacts. • Avoids impacts on ancient woodland and veteran trees. • Reduces forestry felling by re-using a corridor already felled for the delivery of the Inveraray to Creag Dhubh 275kV OHL. 	<p>Benefits</p> <ul style="list-style-type: none"> • Would have a lower visual impact on properties around Drimfern. • Has the potential to have a lower visual impact on Stronmagachan house as a result of sitting on lower ground (though it is noted that the removal of existing vegetation in front of the house in order to install the OHL may reduce effectiveness of current natural screening).
<p>Risks</p> <ul style="list-style-type: none"> • Higher potential to disrupt agricultural activities where it passes through fields used for sheep grazing and lambing and key cropping ground. • Located in a more prominent position that may be more visible to the properties around Drimfern and Stronmagachan House. 	<p>Risks</p> <ul style="list-style-type: none"> • Closer to the A819 and will result in a greater impact on road users, particularly where felling reduces natural screening between the A819 and the proposed OHL alignment. • Closer to the River Aray. • Requires felling of Class 1 and 2 ancient woodland. • Would have a greater impact on future forestry operations at Three Bridges by introducing a second OHL operational corridor in addition to the Creag Dhubh 275kV OHL.



Environment sensitivities

Analysis of environmental constraints has identified sensitivities in relation to the environmental topics identified in the RAG table.

Environmental topic			Alignment 1	Alignment 2
Natural heritage	Designations	International	M	H
		Regional	L	L
	Protected species	European species	L	L
		UK species	L	L
	Habitats	Annex I	M	M
		GWDTE	M	M
		BNG	L	L
	Ornithology	Schedule 1	M	M
		BOCC	L	L
	Hydrology	Drinking water	M	M
		Aquifer	M	M
		Surface water	M	M
	Cultural heritage	Designations	WHS SM GDL battlefields	L
Sites and monuments			M	M
Assets			L	L
People	Dwellings	M	L	
Landscape	Designations	M	M	
	Visual	M	M	
Land use	Agriculture	H	M	
	Forestry	M	M	
	Recreation	Footpaths / Cycle routes	L	L
		Highland sports	L	L
Planning	Proposals	M	M	

As the Alignments diverge only for a short length, the RAG ratings are broadly similar. The main differences are in the potential impact to International Designations and the potential impact on Agriculture. The differences between the environmental sensitivities of the alignment options are identified below.

International Designations: Both alignment options have the potential to impact on the Glen Etive and Glen Fyne Special Protection Area as they pass through it, but Alignment 2 has a higher RAG rating in relation to its impact on international designations.

Alignment 2 would have a high impact on international designations as a result of the requirement to fell irreplaceable ancient woodland habitat (both class 1 and class 2) in order to construct and operate the proposed OHL.

Agriculture: Alignment 1 is rated as having a higher potential impact on agriculture as a result of the overhead line passing through fields used for sheep grazing and lambing.

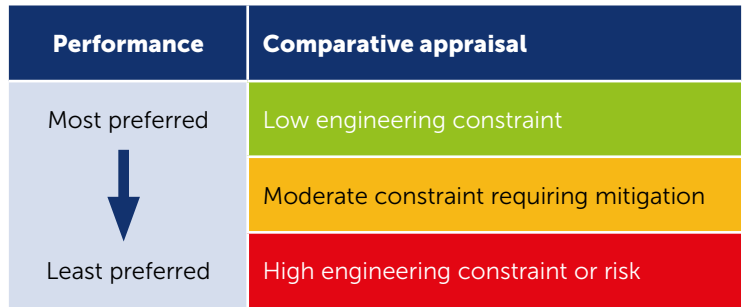
Dwellings: Both alignment options pass in the vicinity of residential properties, however Alignment 1 will pass within 70m of a dwelling whereas Alignment 2 would pass within 100m of a dwelling.

Engineering

To demonstrate the full extent of the analysis undertaken, each alignment option was assessed against a consistent set of engineering criteria, including topography, elevation, ground conditions (peat, rock and flooding), access, river and road crossings, proximity to existing infrastructure, and operational and maintenance considerations.

The outcomes of these assessments were captured using a Red/Amber/Green (RAG) rating system to indicate the relative level of engineering constraint associated with each option.

This approach enabled clear comparison between options and ensured that no single constraint was considered in isolation. The engineering RAG assessments were considered alongside environmental and cost assessments to inform the overall alignment selection process.



RAG impact rating – engineering

Alignment	Environmental design		Topography		Ground conditions				Access		Existing infrastructure		Existing network		Operational		
	Altitude	Coastal	Terrain	Waterbodies	Slope	Peat	Rock	Flooding	Road networks	Access Tracks	Roads	Clearances	Connectivity	Outages	Maintenance	Flexibility	Faults
1	M	L	M	M	M	M	L	M	M	L	L	H	M	M	M	L	M
2	M	L	H	M	H	H	L	L	H	L	M	H	M	M	M	L	M

Engineering RAG rating of alignment options

While both options are confirmed as technically viable, clear differences have been identified in terms of constructability, access requirements and exposure to engineering risk:

- Alignment 1 option passes through steeper elevation with few areas of undulating terrain, with limited existing access and greater interaction with sensitive ground conditions, increasing construction complexity and long term maintenance risk.
- The alternative option, Alignment 2, follows a more undulating terrain, with large sections of peat and difficult terrain, coupled with native woodland as it traverse three bridges plantation, creating greater interfacing risk with the surrounding area and environment throughout. This is worsened by peat, enforcing permanent access through sections that are avoided by alignment 1. The comparative RAG analysis demonstrated that the first alignment option performs more favourably overall from an engineering perspective, particularly in relation to access, terrain stability and safe construction, despite having a longer overall route length.

Potential alignment

Taking account of the environmental and engineering RAG assessments, site walkovers and constructability workshops, alignment 1 is the potential alignment from an engineering perspective as it provides the best balance between constructability, operational safety and long term resilience of the overhead line.

Although longer in length, the potential alignment reduces exposure to steep slopes, known or emerging areas of ground instability and isolated locations where access would be challenging during adverse weather conditions.

It also allows greater use of existing farm, forestry and wind farm access tracks, with material delivery largely undertaken by helicopter where appropriate, reducing the need for new permanent access infrastructure.

Where residual constraints remain—such as river crossings, interfaces with wind farm access roads, or woodland to watercourse trade offs—these are understood and can be managed through standard design measures, micro-siting and agreed mitigation strategies developed in consultation with landowners and environmental specialists, rather than requiring complex or high risk engineering solutions.

From an environmental perspective both alignment options face similar environmental challenges along the majority of their length. Where the two alignment options diverge, Alignment 1 is the preferred route as it avoids impacts to irreplaceable ancient woodland and results in the removal of less woodland overall as it takes advantage of forestry clearance already undertaken to construct and operate the Inveraray to Creag Dhubh 275kV OHL.



Why this alignment?

Two alignment options were examined in detail across this area. Both could technically be built, but they would affect land, access and long term maintenance very differently.

The alignment selected is not the shortest, but it is the one that results in less permanent change to the land overall. While alignment 2 follows flatter ground in places, it would require more frequent interaction with roads, access tracks, wetter ground and peat, leading to greater construction activity, more long term maintenance access and a higher likelihood of repeat disturbance.

Alignment 1 avoids several of these pressures by reducing reliance on new purpose built permanent access limiting works in the wettest ground, and allowing construction to rely more on temporary measures and potentially helicopter delivery where appropriate. Where impacts cannot be avoided—such as river crossings or working near woodland—these have been deliberately chosen as the least impact options available, rather than shifting the problem elsewhere. This decision reflects a balance between engineering practicality, safety, long term reliability of the line and minimising lasting effects on the land and environment, rather than simply choosing the cheapest or easiest route to build.



Construction projects in North Argyll

Creag Dhubh – Inveraray 275kV OHL

We are constructing a new 275kV double circuit overhead line between Creag Dhubh substation and a tee point on the Inveraray – Crossaig circuit. The overhead line is proposed to be between 8-12km. The existing 132kV overhead line between Creag Dhubh substation and Inveraray switching station will be dismantled. As a result, Inveraray switching station will be disconnected from the Kintyre circuit. Construction works commenced in June 2025.

Creag Dhubh substation

This project consists of the construction of a new 275/132kV Gas Insulated Switchgear (GIS) substation at Creag Dhubh, with this connected from Creag Dhubh to the Scottish Power Transmission Dalmally – Windyhill 275kV OHL via 13.5km of proposed new 275kV double circuit steel tower OHL. Construction works commenced in May 2024.

An Suidhe substation

The An Suidhe substation project comprises of the construction of a new 275kV substation and overhead line, which will connect into the recently completed 275kV overhead line between Inveraray and Crossaig. The existing overhead line is capable of operation at 275kV, but is currently routed into the existing An Suidhe 132kV substation, therefore the overhead line requires realignment to connect into the new substation. Associated access, drainage, fencing and landscaping are included in the project plans. Construction works commenced in January 2025.

Local renewable developments

We know that local stakeholders are keen to understand the full extent of renewable developments being proposed in their local area.

Applications to connect to the transmission network in our licence area are made to National Grid ESO and undergo a lengthy process of assessment before we begin to develop a network connection for those developments.

We aim to be transparent about the renewable developments looking to connect to our network but are not permitted to disclose any details of these developments until they are in the public domain.

A list of projects that hold contracts for Transmission Entry Capacity (TEC) with National Grid, the Electricity System Owner is available from their website: Transmission Entry Capacity (TEC) register (neso.energy/data-portal/transmission-entry-capacity-tec-register)



Scan the QR code to search projects



How do I have my say?

We understand and recognise the value of the feedback provided by members of the public during all engagements, consultations and event. Without this valuable feedback, the Project Development team would be unable to progress projects and reach a balanced proposal to submit for planning.

How to provide feedback

Our consultation events have been organised to ensure our project teams will be available to answer questions on the following dates and times

Attend our face to face consultation on **Thursday 11 June 2026** in the **Loch Fyne Hotel Inveraray, PA32 8XT** from **2pm till 7pm**

The feedback forms in this booklet can be detached and sent back, or you can fill them in online using the forms on the project webpages. We do request that any feedback that you wish to be included in the Report on Consultation is received in written format (feedback received via phone calls will be circulated to the project team but would not be included in reporting).

All feedback received will be collated, reviewed and included in the report on consultation which will be published on the project webpages.

Feedback

As part of the consultation exercise, we are seeking comments back from members of the public, statutory consultees and other key stakeholders.

We kindly request that all comments and feedback forms are received by Further information, should you require it, is available on the project webpage or can be made available in printed format by contacting the Community Liaison Manager.



To support everyone online, we provide accessibility and language options on our website through 'Recite Me'. The accessibility and language support options provided by 'Recite Me' include text-to-speech functionality, fully customisable styling features, reading aids, and a translation tool with over 100 languages, including 35 text-to-speech.

Please select "Accessibility" on our website to try out our inclusive toolbar.

Keep in touch

If you have any questions or require further information regarding either of these projects, please do not hesitate to contact the Community Liaison Manager:

Community Liaison Manager

The best way to contact us regarding this project is through our Community Liaison Team.

Caitlin Marini



Scottish and Southern Electricity Networks,
1 Waterloo St, Glasgow, G2 6AY



caitlin.Marini@sse.com



07901 135 758

If you are unable to join the face to face and virtual consultation live chat sessions, there are still plenty of ways to engage with our team:

You can contact us by email, phone or post. Please see details for the Community Liaison Manager.

We are happy to arrange (virtual) meetings for individuals or small groups to discuss any areas of interest and if this is something you would like us to facilitate, please contact us as soon as possible.

We are happy to post out copies of this brochure, please contact the Community Liaison Manager to arrange this.

Additional information:



The best way to keep up to date is to sign up to project updates via the project webpage:

ssen-transmission.co.uk/blarghour

You can also follow us on social media:



SSETransmission



@ssentransmission



SSEN Transmission

Your feedback

If you prefer, the same feedback form is available to complete online and can be found on the project webpage.

Please complete in BLOCK CAPITALS. (Please tick one box per question only)

Q1. Has the need for the project been adequately explained? What other information would you consider useful at this stage?

Yes No Unsure

Comments:

Q2. Has the approach taken to select the potential alignment been adequately explained?

Yes No Unsure

Comments:

Q3. Are there any factors, or environmental features, that you consider may have been overlooked during the Alignment selection process?

Comments:

Q4. Do you feel, on balance, that the potential alignment selected is the most appropriate for further consideration at the alignment selection stage? Please provide an explanation of your answer.

Comments:

Q5. If you don't agree to our potential alignment which of the options would you consider the best option for SSEN Transmission to develop? Please provide an explanation of your answer.

Comments:

Q6. Please use this box to provide any other feedback.

Full name

Address

Telephone

Email

If you would like your comments to remain anonymous please tick this box.

We would like to send you relevant communications via email such as invitations to stakeholder events, surveys, updates on projects, services and future developments from the Scottish and Southern Electricity Networks group listed below. If you are happy to receive email updates please opt in by ticking the box below. You can unsubscribe at any time by contacting us at stakeholder.admin@sse.com or by clicking on the unsubscribe link that will be at the end of each of our emails.

For information on how we collect and process your data please see our privacy notice available at today's event. This can also be obtained online at szen-transmission.co.uk/privacy

If you would like to be kept informed of progress on the project please tick this box.

Thank you for taking the time to complete this feedback form. Please submit your completed form by one of the methods below:

Post: Scottish and Southern Electricity Networks, 1 Waterloo St, Glasgow, G2 6AY **Email:** caitlin.Marini@sse.com **Mob:** 07901 135 758

Online: szen-transmission.co.uk/blarghour

Download: Comments forms and all the information from today's event will also be available to download from the project website.

The feedback form and all information provided in this booklet can also be downloaded from the dedicated website:

szen-transmission.co.uk/blarghour

We intend to use Artificial Intelligence (AI) to assist our experienced teams in the analysis of your feedback, so we can categorise key points raised more quickly. You can learn more about how we're utilising AI at szen-transmission.co.uk/AIFAQ

Any information given on the feedback form can be used and published anonymously as part of Scottish and Southern Electricity Networks consultation report. By completing this feedback form you consent to Scottish and Southern Electricity Networks using feedback for this purpose.

Scottish and Southern Electricity Networks is a trading name of: Scottish and Southern Energy Power Distribution Limited Registered in Scotland No. SC213459; Scottish Hydro Electric Transmission plc Registered in Scotland No. SC213461; Scottish Hydro Electric Power Distribution plc Registered in Scotland No. SC213460; (all having their Registered Offices at Inveralmond House 200 Dunkeld Road Perth PH1 3AQ); and Southern Electric Power Distribution plc Registered in England & Wales No. 04094290 having its Registered Office at Number One Forbury Place, 43 Forbury Road, Reading, Berkshire, RG1 3JH which are members of the SSE Group.