

APPENDIX M – BASELINE NOISE SURVEY DETAILS

Figure 1-1 shows a summary of the day and night-time measured noise levels at Measurement Position 1 (MP1) (see **Figure 11-1, Appendix A Figures**) during the survey. It also shows the periods where the weather conditions were unsuitable for sound level measurements. These periods have been omitted from the data used in the assessment.

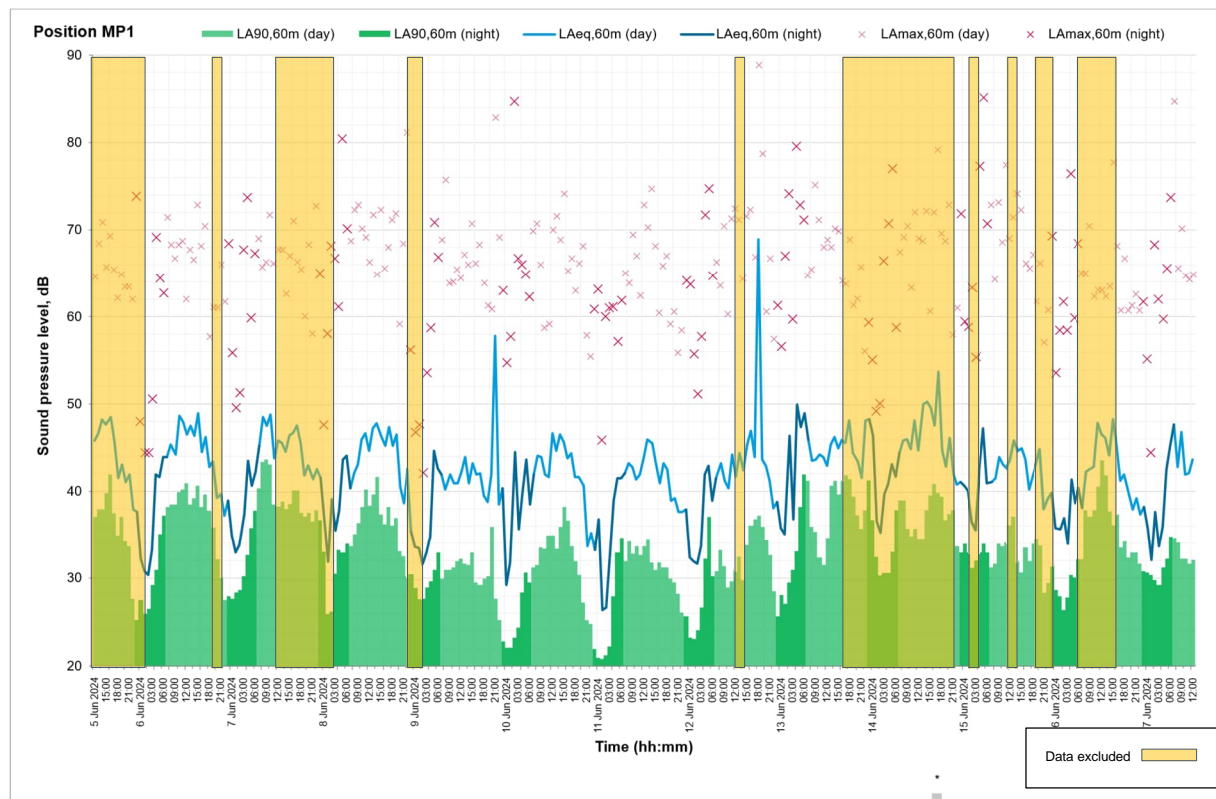


Figure 1-1 – MP1 Noise Levels dB

Table 1-1 contains information on the equipment used during the survey. The location of the unattended and CRTN measurements are shown on **Figure 11-1, Appendix A Figures**.

Table 1-1 - Noise Survey Equipment

Equipment description	Manufacturer & Type No.	Serial No.
Sound Level meter	Rion NL-52	821104
Sound Level meter	Rion NL-52	821130
Calibrator	B&K 4231	2705904
Weather Station	Outpost COBRA2-3G	op40470

The Type 1 sound level meters have been calibrated to traceable standards within the preceding two years and the portable calibrator within the preceding 12 months. The sound level meters were calibrated both prior to and upon completion of the survey and no significant drift was observed.

Figure 1-2 presents photographs of the sound level meter and weather station in-situ at Measurement Position 1 (MP1).



Figure 1-2 – Sound level meter in-situ at MP1