

DRAWN	BG	REMARKS:
CHKD	AS	UPDATED TO SUIT ROAD WIDENING TO 6.5M
DESIGN	AS	STATUS S5 DATE 26/11/24
APPD	NM	FOR ACCEPTANCE REV P05
DRAWN	BP	REMARKS:
CHKD	MD	2C FINAL ECE
DESIGN	RV	STATUS S5 DATE 12/07/24
APPD	NM	FOR ACCEPTANCE REV P04
DRAWN	BP	REMARKS:
CHKD	MD	2C ISSUE
DESIGN	RV	STATUS S5 DATE 07/05/24
APPD	NM	FOR ACCEPTANCE REV P03
DRAWN	BP	REMARKS:
CHKD	MD	2B ISSUE
DESIGN	RV	STATUS S5 DATE 22/03/24
APPD	NM	FOR ACCEPTANCE REV P02
DRAWN	BP	REMARKS:
CHKD	MD	FIRST ISSUE
DESIGN	RV	STATUS S5 DATE 19/01/24
APPD	NM	FOR ACCEPTANCE REV P01



**Balfour Beatty**

PROJECT NAME:  
ASTI - ECE

LOCATION:  
CAMBUSHINNIE 400kV S/S

SITE:  
CMBS

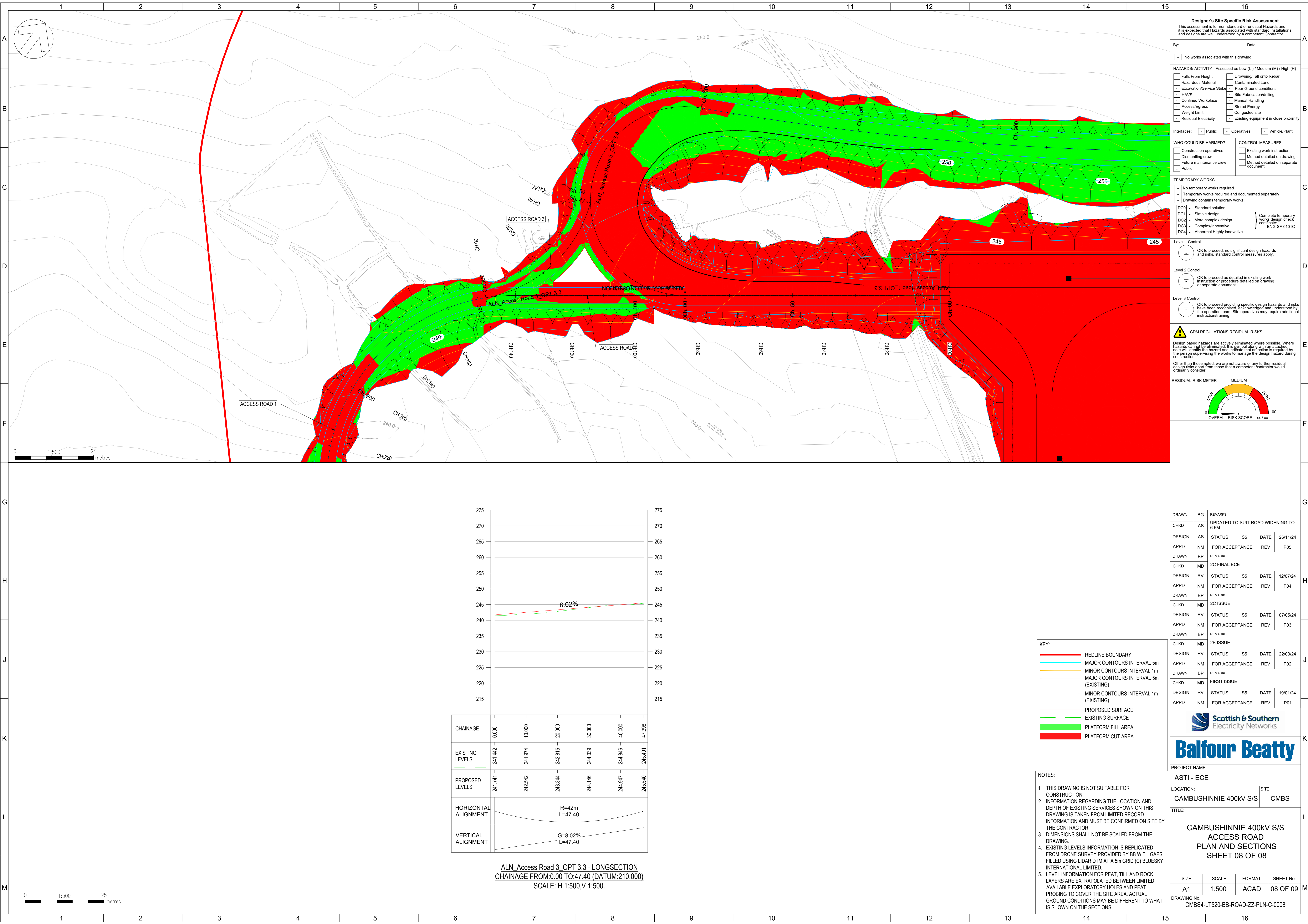
TITLE:

**CAMBUSHINNIE 400kV S/S  
ACCESS ROAD  
PLAN AND SECTIONS  
SHEET 07 OF 08**

SIZE	SCALE	FORMAT	SHEET No.
A1	1:500	ACAD	07 OF 09

DRAWING No.  
CMBS4-LT520-BB-ROAD-ZZ-PLN-C-0007





Designers Site Specific Risk Assessment

This assessment is for non-standard or unusual Hazards and it is expected that Hazards associated with standard installations and designs are well understood by a competent Contractor.

By:

Date:

☐ No works associated with this drawing

HAZARDS/ ACTIVITY - Assessed as Low (L ) / Medium (M) / High (H)

Falls From Height

Hazardous Material

Excavation/Service Strike

HAVS

Confined Workplace

Access/Egress

Weight Limit

Residual Electricity

Drowning/Fall onto Rebar

Contaminated Land

Poor Ground conditions

Site Fabrication/Drilling

Manual Handling

Stored Energy

Congested site

Existing equipment in close proximity

Interfaces: ☐ Public ☐ Operatives ☐ Vehicle/Plant

WHO COULD BE HARMED?

Construction operatives

Dismantling crew

Future maintenance crew

Public

CONTROL MEASURES

Existing work instruction

Method detailed on drawing

Method detailed on separate document

TEMPORARY WORKS

No temporary works required

Temporary works required and documented separately

Drawing contains temporary works:

DC00 - Standard solution

DC1 - Simple design

DC2 - More complex design

DC3 - Complex/Innovative

DC4 - Abnormal Highly innovative

Complete temporary works design check certificate ENG-SF-0101C

Level 1 Control

☐ OK to proceed, no significant design hazards and risks, standard control measures apply.

Level 2 Control

☐ OK to proceed as detailed in existing work instruction or procedure detailed on drawing or separate document.

Level 3 Control

☐ OK to proceed providing specific design hazards and risks have been recognised, acknowledged and understood by the operation team. Site operatives may require additional instruction/training

CDM REGULATIONS RESIDUAL RISKS

Design based hazards are actively eliminated where possible. Where hazards cannot be eliminated, this symbol along with an attached note will identify the hazard and indicate that an action is required by the person supervising the works to manage the design hazard during construction.

Other than those noted, we are not aware of any further residual design risks apart from those that a competent contractor would ordinarily consider.

RESIDUAL RISK METER

LOW

MEDIUM

HIGH

OVERALL RISK SCORE = xx / xx

DRAWN	BG	REMARKS:			
CHKD	AS	UPDATED TO SUIT ROAD WIDENING TO 6.5M			
DESIGN	AS	STATUS	S5	DATE	26/11/24
APPD	NM	FOR ACCEPTANCE	REV	P05	
DRAWN	BP	REMARKS:			
CHKD	MD	2C FINAL ECE			
DESIGN	RV	STATUS	S5	DATE	12/07/24
APPD	NM	FOR ACCEPTANCE	REV	P04	
DRAWN	BP	REMARKS:			
CHKD	MD	2C ISSUE			
DESIGN	RV	STATUS	S5	DATE	07/05/24
APPD	NM	FOR ACCEPTANCE	REV	P03	
DRAWN	BP	REMARKS:			
CHKD	MD	2B ISSUE			
DESIGN	RV	STATUS	S5	DATE	22/03/24
APPD	NM	FOR ACCEPTANCE	REV	P02	
DRAWN	BP	REMARKS:			
CHKD	MD	FIRST ISSUE			
DESIGN	RV	STATUS	S5	DATE	19/01/24
APPD	NM	FOR ACCEPTANCE	REV	P01	

KEY:

REDLINE BOUNDARY

MAJOR CONTOURS INTERVAL 5m

MINOR CONTOURS INTERVAL 1m

MAJOR CONTOURS INTERVAL 5m (EXISTING)

MINOR CONTOURS INTERVAL 1m (EXISTING)

PROPOSED SURFACE

EXISTING SURFACE

PLATFORM FILL AREA

PLATFORM CUT AREA

NOTES:

1. THIS DRAWING IS NOT SUITABLE FOR CONSTRUCTION.

2. INFORMATION REGARDING THE LOCATION AND DEPTH OF EXISTING SERVICES SHOWN ON THIS DRAWING IS TAKEN FROM LIMITED RECORD INFORMATION AND MUST BE CONFIRMED ON SITE BY THE CONTRACTOR.

3. DIMENSIONS SHALL NOT BE SCALED FROM THE DRAWING.

4. EXISTING LEVELS INFORMATION IS REPLICATED FROM DRONE SURVEY PROVIDED BY BB WITH GAPS FILLED USING LIDAR DTM AT A 5m GRID (C) BLUESKY INTERNATIONAL LIMITED.

5. LEVEL INFORMATION FOR PEAT, TILL AND ROCK LAYERS ARE EXTRAPOLATED BETWEEN LIMITED AVAILABLE EXPLORATORY HOLES AND PEAT PROBING TO COVER THE SITE AREA. ACTUAL GROUND CONDITIONS MAY BE DIFFERENT TO WHAT IS SHOWN ON THE SECTIONS.

CHAINAGE	0.000	10.000	20.000	30.000	40.000	47.398
EXISTING LEVELS	241.442	241.974	242.815	244.039	244.846	245.401
PROPOSED LEVELS	241.741	242.542	243.344	244.146	244.947	245.540
HORIZONTAL ALIGNMENT	R=42m L=47.40					
VERTICAL ALIGNMENT	G=8.02% L=47.40					

ALN\_Access Road 3\_OPT 3.3 - LONGSECTION  
CHAINAGE FROM:0.00 TO:47.40 (DATUM:210.000)  
SCALE: H 1:500,V 1:500.

© Balfour Beatty plc 2022. THE COPYRIGHT IN THIS DRAWING & THE DESIGN RIGHT IN THE ARTICLE(S) DEPICTED BELONG TO BALFOUR BEATTY PLC OR ITS SUBSIDIARY. THE DRAWING MAY NOT BE COPIED BY ANY MEANS (INCLUDING TRACING) OR STORED AS A MICROFILM, AS A CAD FILE OR CD-ROM OR IN ANY OTHER ELECTRONIC FORM. NOR MAY ARTICLES BE MADE FROM THE DRAWING, EITHER DIRECTLY OR INDIRECTLY, WITHOUT THE PRIOR WRITTEN CONSENT OF BALFOUR BEATTY PLC OR ITS AUTHORISED REPRESENTATIVES.