



Photograph Parameters Viewpoint 5_2: IMG_1443				
Location grid reference:	256961, 910982	Camera:	Canon EOS 6D	Distance from Proposed Development: 914m
GPS location accuracy:	+/- 4m	Lens:	50mm	
Horizontal field of view:	39.6° (planar projection)	Camera height:	1.5m AGL	
Paper size:	420mm x 297mm (A3)	Date and time:	12/09/2023 16:30	
Correct printed image size:	315mm x 95mm			

Scottish and Southern Electricity Networks
Chleansaid Windfarm 132kV Overhead Line
(OHL) Connection

Figure 6.8f
Viewpoint 5 Tirryside
Existing View

100% Enlargement
TYPE 3 VISUALISATION

September 2024





Photomontage Parameters Viewpoint 5_2: IMG_1443				
Location grid reference:	256961, 910982	Camera:	Canon EOS 6D	Distance from Proposed Development: 914m
GPS location accuracy:	+/- 4m	Lens:	50mm	
Horizontal field of view:	39.6° (planar projection)	Camera height:	1.5m AGL	
Paper size:	420mm x 297mm (A3)	Date and time:	12/09/2023 16:30	
Correct printed image size:	315mm x 95mm			

Scottish and Southern Electricity Networks
Chleansaid Windfarm 132kV Overhead Line
(OHL) Connection

Figure 6.8g
Viewpoint 5 Tirryside
Photowire of Proposed View

100% Enlargement
TYPE 3 VISUALISATION

September 2024





Photomontage Parameters Viewpoint 5_2: IMG_1443				
Location grid reference:	256961, 910982	Camera:	Canon EOS 6D	Distance from Proposed Development: 914m
GPS location accuracy:	+/- 4m	Lens:	50mm	
Horizontal field of view:	39.6° (planar projection)	Camera height:	1.5m AGL	
Paper size:	420mm x 297mm (A3)	Date and time:	12/09/2023 16:30	
Correct printed image size:	315mm x 95mm			

Scottish and Southern Electricity Networks
Chleansaid Windfarm 132kV Overhead Line
(OHL) Connection

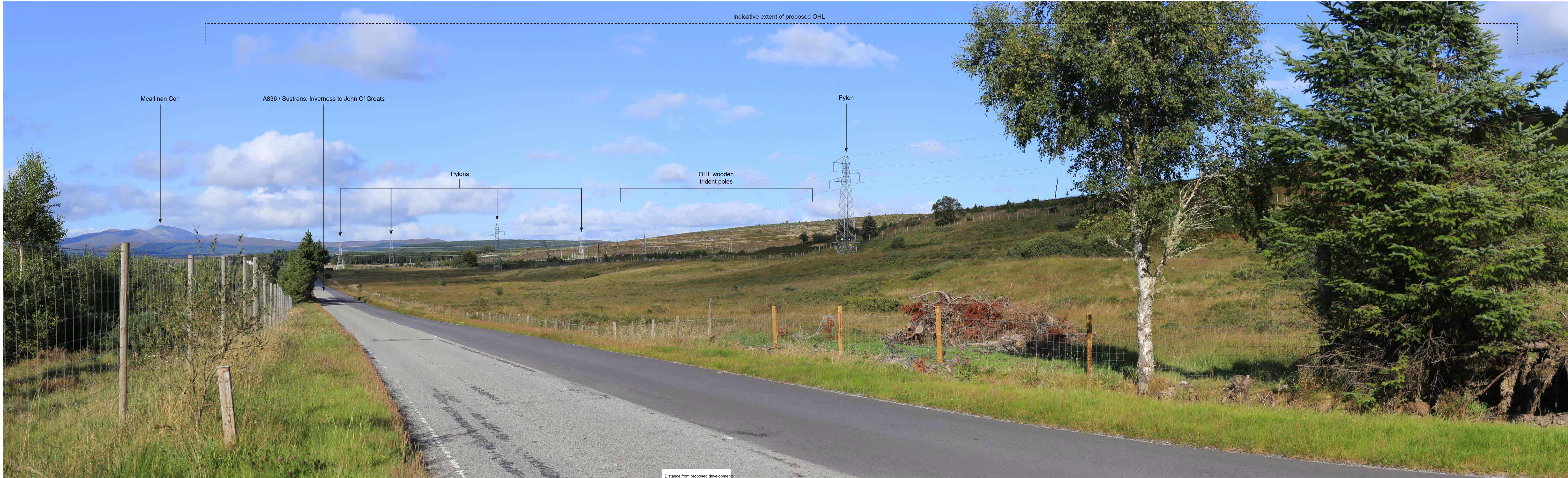
Figure 6.8h
Viewpoint 5 Tirryside
Photomontage of Proposed View


100% Enlargement
TYPE 3 VISUALISATION

September 2024



\\uk.wspgroup.com\central_data\Projects\70109xxx\70109477 - Clelandsaid WF Connection EIA\03 WPL\Landscapes\Drawings\CHL_WSP\EL\S-XX-DR-LE-0014-P03 Figure 6.4 to 6.13 Viewpoints - Copy.indd Originator: Steve Halford



Photograph Parameters Viewpoint 6:					100% Enlargement		Scottish and Southern Electricity Networks Chleansaid Windfarm 132kV Overhead Line (OHL) Connection	Figure 6.9a Viewpoint 6 Existing 90° View from A836 / Sustrans: Inverness to John O' Groats looking north-east September 2024	
Location grid reference:	257149, 909030	Camera:	Canon EOS 6D, FFS	Approximate distance to OHL:	1.1km	TYPE 3 VISUALISATION			
GPS location accuracy:	+/- 4m	Lens:	50mm						
Horizontal field of view:	90° (cylindrical projection)	Camera height:	1.5m AGL						
Paper size:	840mm x 297mm (A1)	Date and time:	12/09/2023 16:05						
Correct printed image size:	820mm x 250mm								



Photograph Parameters Viewpoint 6_1: IMG_1402

Location grid reference:	257149, 909030	Camera:	Canon EOS 6D	Distance from Proposed Development:	1,169m
GPS location accuracy:	+/- 4m	Lens:	50mm		
Horizontal field of view:	39.6° (planar projection)	Camera height:	1.5m AGL		
Paper size:	420mm x 297mm (A3)	Date and time:	12/09/2023 16:05		
Correct printed image size:	315mm x 95mm				

Scottish and Southern Electricity Networks
Chleainsaid Windfarm 132kV Overhead Line
(OHL) Connection

Figure 6.9b
Viewpoint 6 A836 NCR Looking North
Existing View

100% Enlargement
TYPE 3 VISUALISATION

September 2024





Photomontage Parameters Viewpoint 6_1: IMG_1402

Location grid reference:	257149, 909030	Camera:	Canon EOS 6D	Distance from Proposed Development:	1,169m
GPS location accuracy:	+/- 4m	Lens:	50mm		
Horizontal field of view:	39.6° (planar projection)	Camera height:	1.5m AGL		
Paper size:	420mm x 297mm (A3)	Date and time:	12/09/2023 16:05		
Correct printed image size:	315mm x 95mm				

Scottish and Southern Electricity Networks
Chleainsaid Windfarm 132kV Overhead Line
(OHL) Connection

Figure 6.9c
Viewpoint 6 A836 NCR Looking North
Photowire of Proposed View

100% Enlargement
TYPE 3 VISUALISATION

September 2024





Photomontage Parameters Viewpoint 6_1: IMG_1402

Location grid reference:	257149, 909030	Camera:	Canon EOS 6D	Distance from Proposed Development:	1,169m
GPS location accuracy:	+/- 4m	Lens:	50mm		
Horizontal field of view:	39.6° (planar projection)	Camera height:	1.5m AGL		
Paper size:	420mm x 297mm (A3)	Date and time:	12/09/2023 16:05		
Correct printed image size:	315mm x 95mm				

Scottish and Southern Electricity Networks
Chleainsaid Windfarm 132kV Overhead Line
(OHL) Connection

Figure 6.9d
Viewpoint 6 A836 NCR Looking North
Photomontage of Proposed View

100% Enlargement
TYPE 3 VISUALISATION

September 2024





Photograph Parameters Viewpoint 6_2: IMG_1403				
Location grid reference:	257149, 909030	Camera:	Canon EOS 6D	Distance from Proposed Development: 1,169m
GPS location accuracy:	+/- 4m	Lens:	50mm	
Horizontal field of view:	39.6° (planar projection)	Camera height:	1.5m AGL	
Paper size:	420mm x 297mm (A3)	Date and time:	12/09/2023 16:05	
Correct printed image size:	315mm x 95mm			

Scottish and Southern Electricity Networks
Chleasaid Windfarm 132kV Overhead Line
(OHL) Connection

Figure 6.9e
Viewpoint 6 A836 NCR Looking North
Existing View

100% Enlargement
TYPE 3 VISUALISATION

September 2024





Photomontage Parameters Viewpoint 6_2: IMG_1403				
Location grid reference:	257149, 909030	Camera:	Canon EOS 6D	Distance from Proposed Development: 1,169m
GPS location accuracy:	+/- 4m	Lens:	50mm	
Horizontal field of view:	39.6° (planar projection)	Camera height:	1.5m AGL	
Paper size:	420mm x 297mm (A3)	Date and time:	12/09/2023 16:05	
Correct printed image size:	315mm x 95mm			

Scottish and Southern Electricity Networks
Chleansaid Windfarm 132kV Overhead Line
(OHL) Connection

Figure 6.9f
Viewpoint 6 A836 NCR Looking North
Photowire of Proposed View

100% Enlargement
TYPE 3 VISUALISATION

September 2024





Photomontage Parameters Viewpoint 6_2: IMG_1403				
Location grid reference:	257149, 909030	Camera:	Canon EOS 6D	Distance from Proposed Development: 1,169m
GPS location accuracy:	+/- 4m	Lens:	50mm	
Horizontal field of view:	39.6° (planar projection)	Camera height:	1.5m AGL	
Paper size:	420mm x 297mm (A3)	Date and time:	12/09/2023 16:05	
Correct printed image size:	315mm x 95mm			

Scottish and Southern Electricity Networks
Chleansaid Windfarm 132kV Overhead Line
(OHL) Connection

Figure 6.9g
Viewpoint 6 A836 NCR Looking North
Photomontage of Proposed View

100% Enlargement
TYPE 3 VISUALISATION

September 2024

