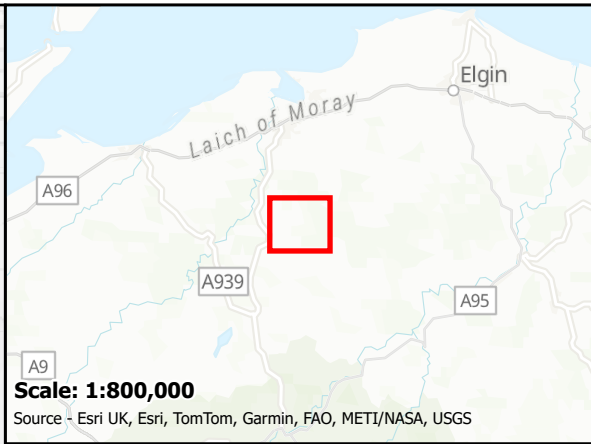
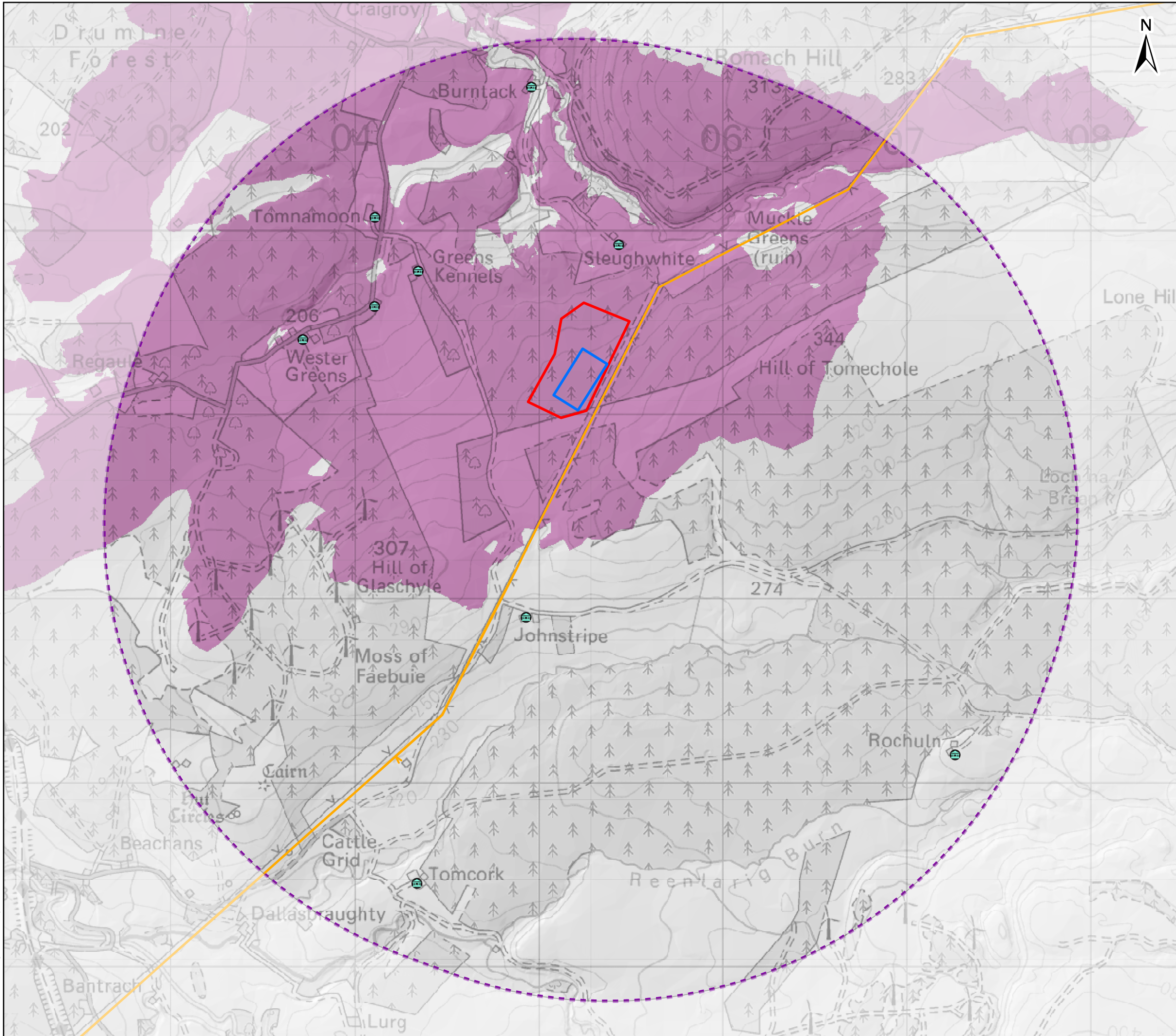
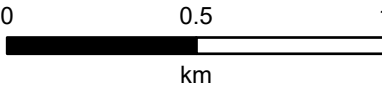


Document Path: \\corp\global\GB\Projects\UK0028262\UK0028262_9467 - Clash Gour\03 WIP\GIS\MXD\Site Selection and Alignment Selection\Figure 5.6 - Site 3 ZTV.aprx



- Key
- Site 3 Proposed Option
 - Illustrative Substation Platform
 - 2.5 Km Study Area
 - Landscape and Potential Visual Receptor
- Existing Overhead Line
- 275 kV AC
- Site 3 - ZTV
- Zone of Theoretical Visibility



Note:

1) The Zone of Theoretical Visibility is calculated based on the Illustrative Substation Platform (marked in blue) base height of 265m and the structure height of 15m with a viewer height of 2m above ground level. We have assumed the maximum height of the proposed built form will lie within these platforms. The terrain model assumes bare ground and is derived from OS Terrain 5 data.

2) The ZTV uses the proposed heights of built form placed at proposed levels. Earth curvature and atmosphere refraction have been taken into account. The ZTV does not take into consideration intervening vegetation and built form. This presents a worst case scenario.



Project: Clash Gour
275/132kV Transmission Substation

Title: Figure 9 - Site 3 Zone of Theoretical Visibility (Bare Ground)

Date: 29/05/2025 Scale: 1:20,000 @ A3
Drawn: AC Checked: IM Approved: RG
Drawing Number: WSP-DA-UK0028262.9467-010