

# Powering change together

The time has come to further enhance Scotland's energy infrastructure, providing power for future generations as we move towards net zero.

The shift to a cleaner, more sustainable future is about more than climate change. It's about ensuring future generations have the same opportunities to thrive as we have all had.

Countries around the world are investing in their energy infrastructure to support the demands of modern economies and meet net zero targets. The UK is leading the way in building a modern, sustainable energy system for the future.



## We all have a part to play

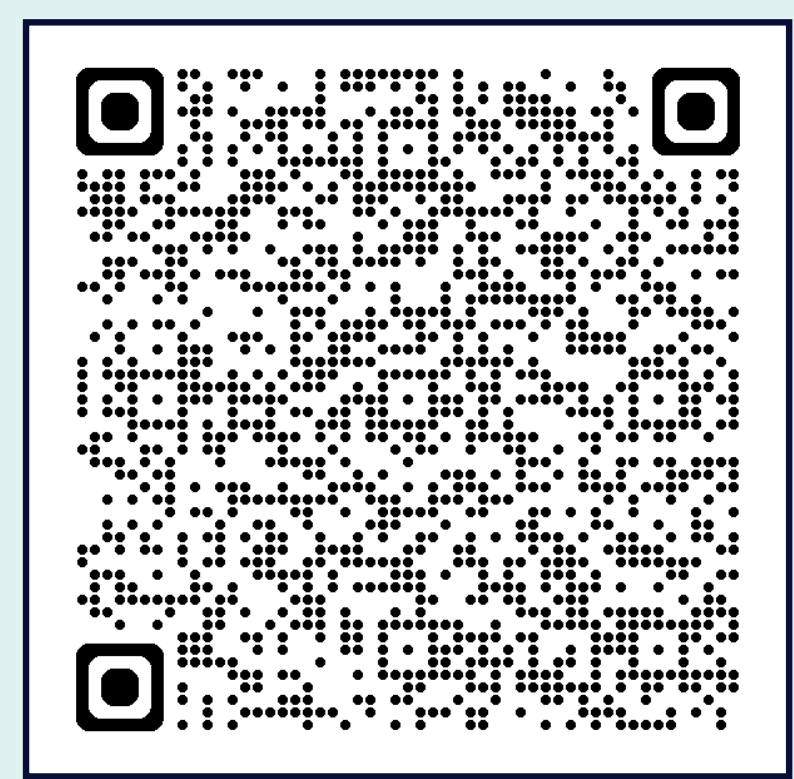
When it comes to net zero, we have to be in it together. The UK and Scottish governments have ambitious net zero targets, and we're playing our part in meeting them.

We work closely with the National Energy System Operator (NESO) to connect vast renewable energy resources—harnessed by solar, wind, hydro and marine generation—to areas of demand across the country. Scotland is playing a big role in meeting this demand, exporting two thirds of power generated in our network.

**But there's more to be done. By 2050, the north of Scotland is predicted to contribute over 50GW of low carbon energy to help deliver net zero. Today, our region has around 9GW of renewable generation connected to the network.**

At SSEN Transmission, it is our role to build the energy system of the future.

**We're investing over £20 billion into our region's energy infrastructure this decade, with the potential for this to increase to over £30 billion. This investment will deliver a network capable of meeting 20% of the UK's Clean Power 2030 target and supporting up to 37,000 jobs, 17,500 of which will be here in Scotland.**



More information about the policies and documents driving the need for the energy system for the future can be found here:

## Who we are

We're responsible for maintaining and investing in the electricity transmission network in the north of Scotland. We're part of SSE plc, one of the world's leading energy companies with a rich heritage in Scotland that dates back more than 80 years. We are also closely regulated by the GB energy regulator Ofgem, who determines how much revenue we are allowed to earn for constructing, maintaining and renovating our transmission network.

## What we do

We manage the electricity network across our region which covers a quarter of the UK's land mass, crossing some of the country's most challenging terrain. We connect renewable energy sources to our network in the north of Scotland and then transport it to where it needs to be. From underground and subsea cables and overhead lines to electricity substations, our network keeps your lights on all year round.

## Working with you

We understand that the work we do can have an impact on communities. So we're committed to minimising our impacts and maximising all the benefits that our developments can bring to your area. We're regularly assessed by global sustainability consultancy AccountAbility for how we engage with communities. That means we provide all the information you need to know about our plans and how they will impact communities like yours. The way we consult is also a two-way street. We want to hear people's views, concerns, or ideas and harness local knowledge so that our work benefits their communities: today and long into the future. You can share your views with us at: [ssen-transmission.co.uk/talk-to-us/contact-us](https://ssen-transmission.co.uk/talk-to-us/contact-us)



[lisa.marchi@sse.com](mailto:lisa.marchi@sse.com)



07825 015 507



[ssen-transmission.co.uk/corriemoillie-substation-extension](https://ssen-transmission.co.uk/corriemoillie-substation-extension)



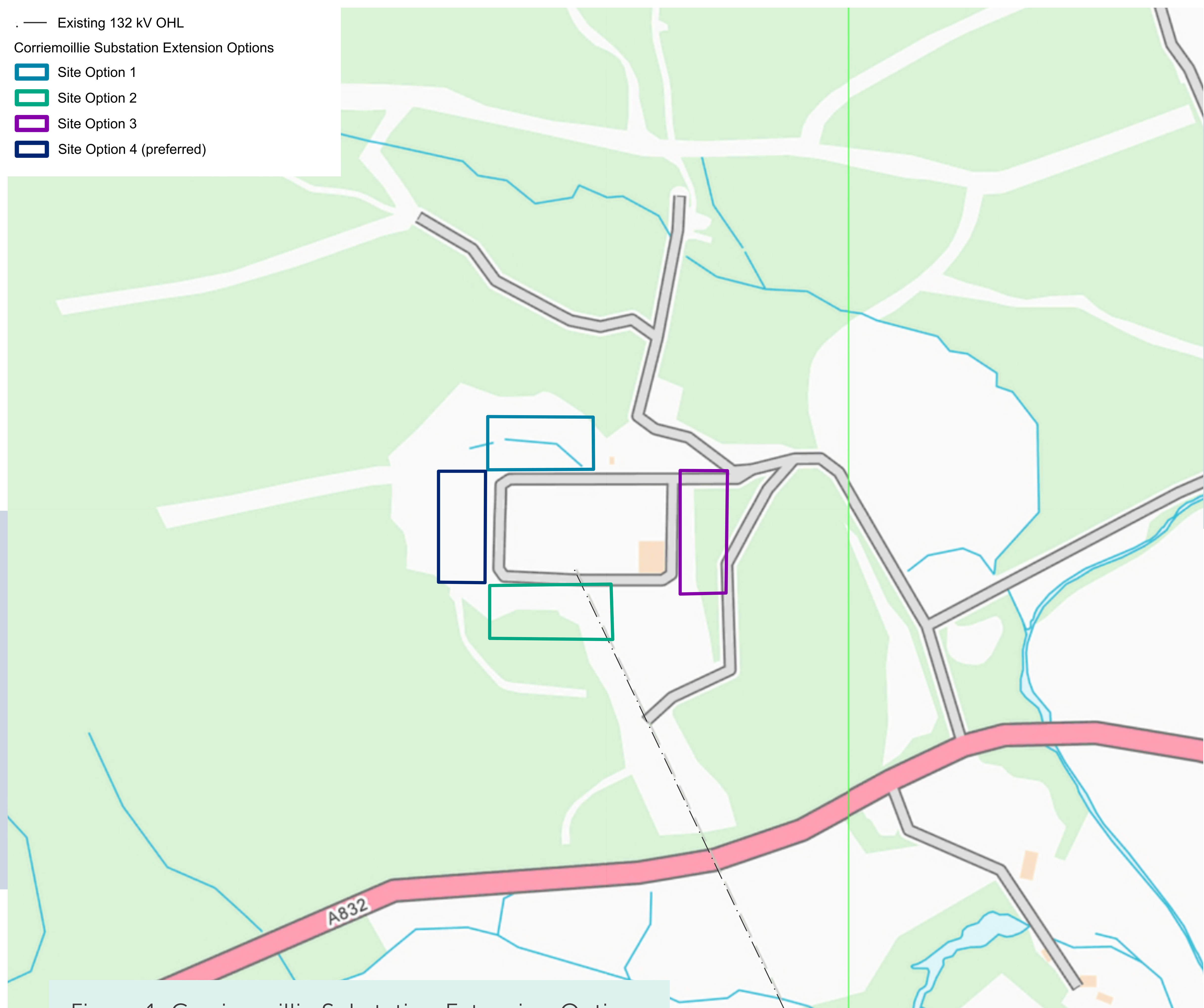
# Project need and overview

As the transmission license holder in the north of Scotland, we have a duty under Section 9 of the Electricity Act 1989 to facilitate competition in the generation and supply of electricity. We have obligations to offer non-discriminatory terms for connection to the transmission system, both for new generation and for new sources of electricity demand.

To support the connection of renewable developments in the area, we are required to extend the existing platform at Corriemoillie 132kV substation. This will allow for the installation of additional bays to accommodate new electrical equipment.

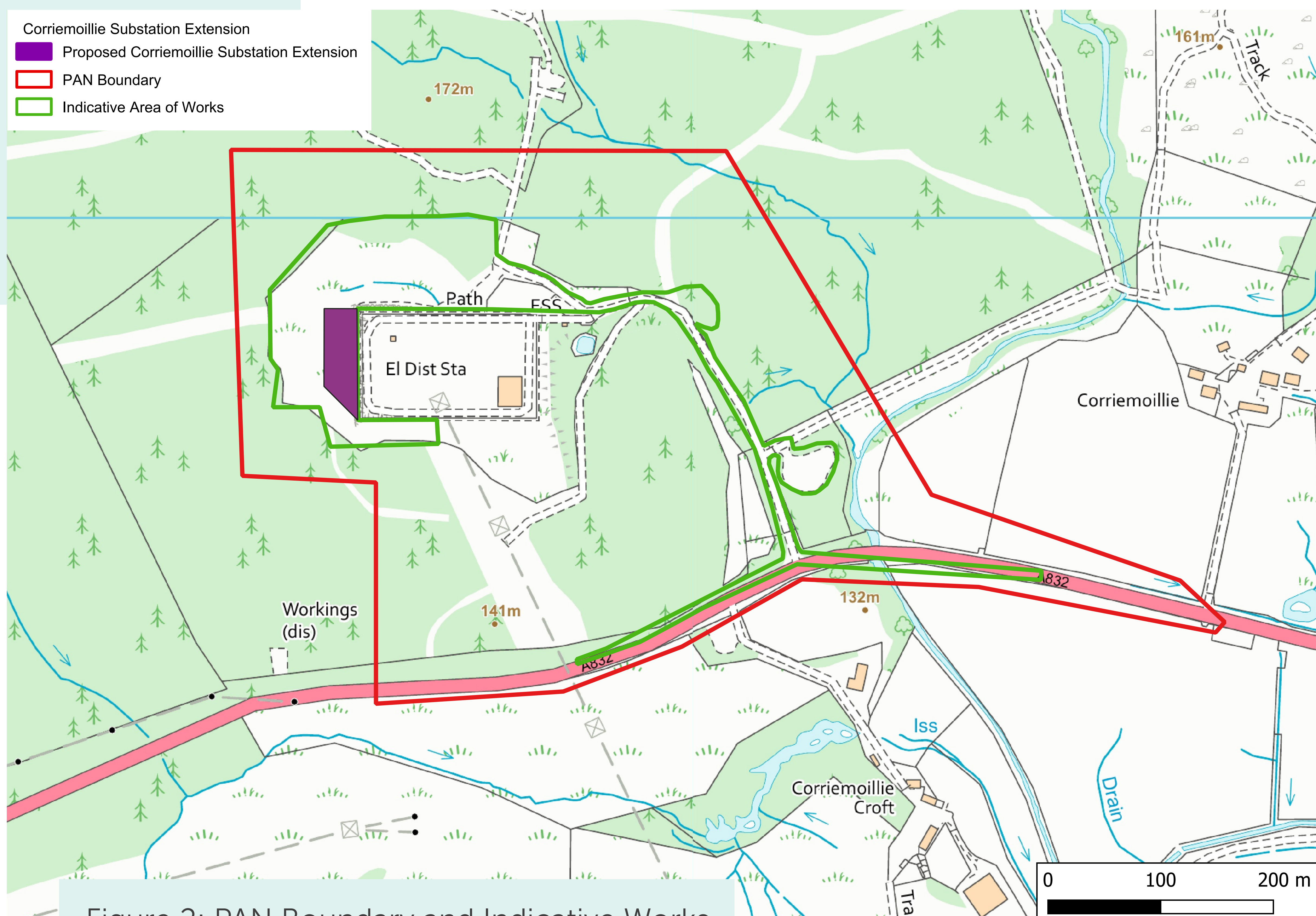
## Summary of options considered

A site selection assessment has been undertaken to appraise four potential options against a number of environmental, technical, and economic areas. Option 4 to the west of the existing substation has been identified as the preferred option, with a platform size of approximately 0.2 hectares (ha). This site option was chosen as the preferred mainly due to the limited need for diversion works, no requirement for realignment of existing tracks, and the existing tree line creating natural screening.





# The proposed works



The indicative area of works shown in Figure 2 for the proposed Corriemoillie substation extension including access, drainage, construction compounds, and welfare facilities is over the 2ha threshold, making this a 'National Development' under the Town and Country Planning process. Therefore, formal Pre-Application Consultation is now required before the submission of a Town and Country Planning application.

A Proposal of Application Notice (PAN) boundary has been submitted to The Highland Council. This area represents the maximum extent of land to be potentially included in the planning application, however will be reduced as the development proposal is refined and finalised.

## Engineering

Construction of the proposed substation extension will require vehicles to deliver equipment, materials, and personnel to the site. Permanent access will be via the existing substation road connected to the A832, with no changes proposed to this route. Temporary access will be created using floating stone tracks or trackway panels positioned around the existing substation perimeter.

Temporary laydown areas for equipment and materials and staff welfare facilities will be set up on existing hard standing in the vicinity of the existing substation.

Surface water from the proposed extension will be collected by a system of drains and ditches, linking into the existing substation drainage network.

Some cut-and-fill will be needed to prepare and level the ground for the proposed extension.

## Environmental

Desk-based assessments using available mapping and GIS (Geographic Information Systems) data, together with initial site walkovers by specialists, have been undertaken to gather baseline information. Further surveys and assessments will be carried out to understand any potential impacts of the proposed extension on environmental receptors and recommend mitigation measures where needed. Environmental sensitivities in the area include ecology, ornithology, hydrology and forestry.

A Landscape and Visual Assessment will assess how the proposed extension may be seen from the surrounding area, identify any potential impacts, and recommend appropriate mitigation if needed. As the development is an extension of the existing Corriemoillie substation and benefits from existing screening, it is unlikely to affect visual amenity.



[lisa.marchi@sse.com](mailto:lisa.marchi@sse.com)



07825 015 507



[ssen-transmission.co.uk/corriemoillie-substation-extension](https://ssen-transmission.co.uk/corriemoillie-substation-extension)



# Town and Country Planning

The legislation that enables the development and regulation of required projects like the proposed Corriemoillie substation extension is the Town and Country Planning (Scotland) Act 1997.

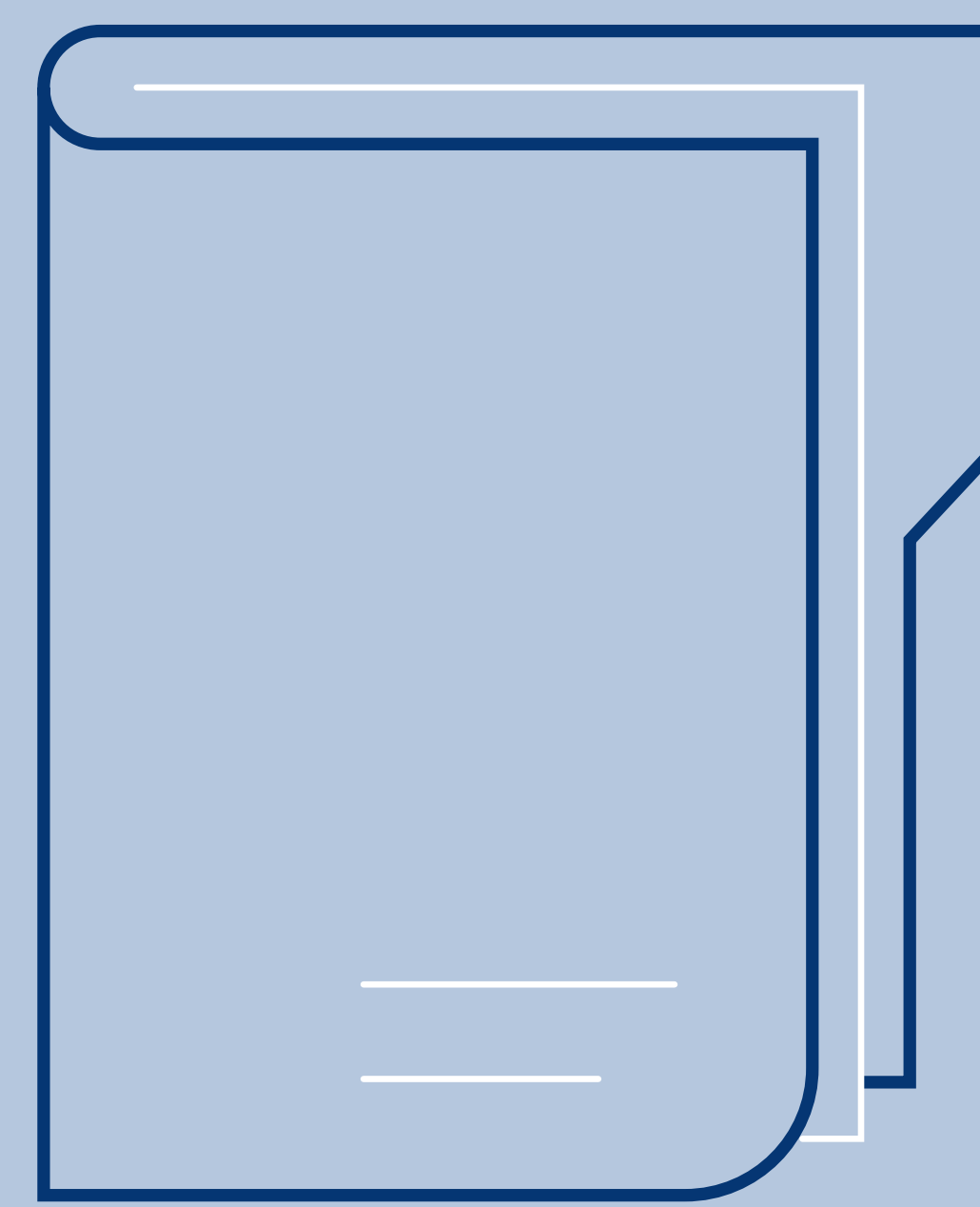
## Engaging the right people

Local Planning Authorities determine the outcome of any applications made under the Town and Country Planning Act and establish the planning pathway our substation projects must take, including which consents are required. This includes 'screening' the proposal to confirm whether the project may trigger the requirement to undertake an Environmental Impact Assessment (EIA) under the relevant legislation. If the project is deemed non-EIA (due to its scale or potential environmental impacts), a voluntary Environmental Appraisal (EA) shall be produced by us to support the planning application. These assessments and any associated background material would be made publicly available once submitted.

## The pre-application process

A Proposal of Application Notice (PAN) was submitted to The Highland Council in October. This is the first stage in the planning application process, marks the beginning of a minimum 12 week consultation period before a planning application can be submitted.

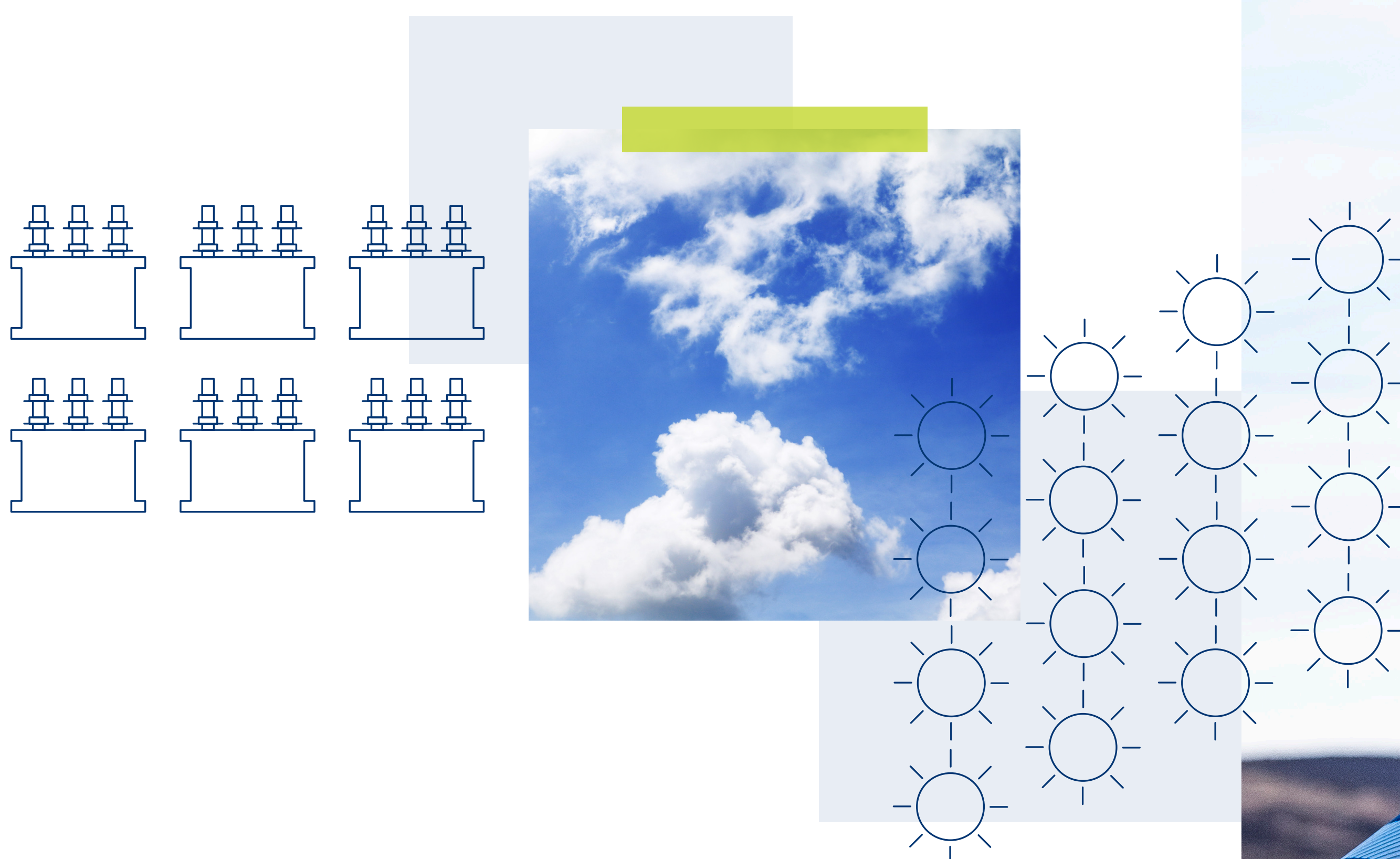
The plans we are consulting on at this event may change between now and the submission of a planning application. The PAN boundary submitted with the PAN Notice represents the maximum extent of the land potentially included in the application, but this area may be reduced or rationalised as the development proposal is refined and finalised. There is a requirement to hold at least two events to provide the opportunity for members of the public to comment on the proposals. This public event is the first event, with a second event anticipated to be held in early 2026.



## Submitting a planning application

The planning application is anticipated to be submitted to The Highland Council in April 2026. A Pre-application Consultation Report will accompany the planning application, providing details of the consultation undertaken and communicating how the consultation process has influenced the proposed development. Where comments are received that cannot be addressed in the final proposal, it is intended that an explanation will also be given why this is the case.

Please note that comments made through the pre-application consultation process are not formal representations to The Highland Council. When the planning application is submitted there will be an opportunity to make formal representations to The Highland Council via the planning portal or in writing.



[lisa.marchi@sse.com](mailto:lisa.marchi@sse.com)



07825 015 507



[ssen-transmission.co.uk/corriemoillie-substation-extension](https://ssen-transmission.co.uk/corriemoillie-substation-extension)



# Help shape our plans

The work we have planned has the potential to deliver benefits in your community, Scotland, and beyond. Yet we know that achieving our goals will require a lot of work that may impact your local community. That's why we want to work with you every step of the way throughout the planning and delivery stages of these essential works.

We're committed to delivering a meaningful consultation process that actively seeks the views of everyone affected by our plans. That means making our plans clear and easily accessible, so that you can give us input throughout each stage of the development process.

By telling us what you think, you will help shape our proposals. We want to harness your local knowledge so that we spot any unforeseen challenges early and maximise the potential benefits and opportunities for your communities.

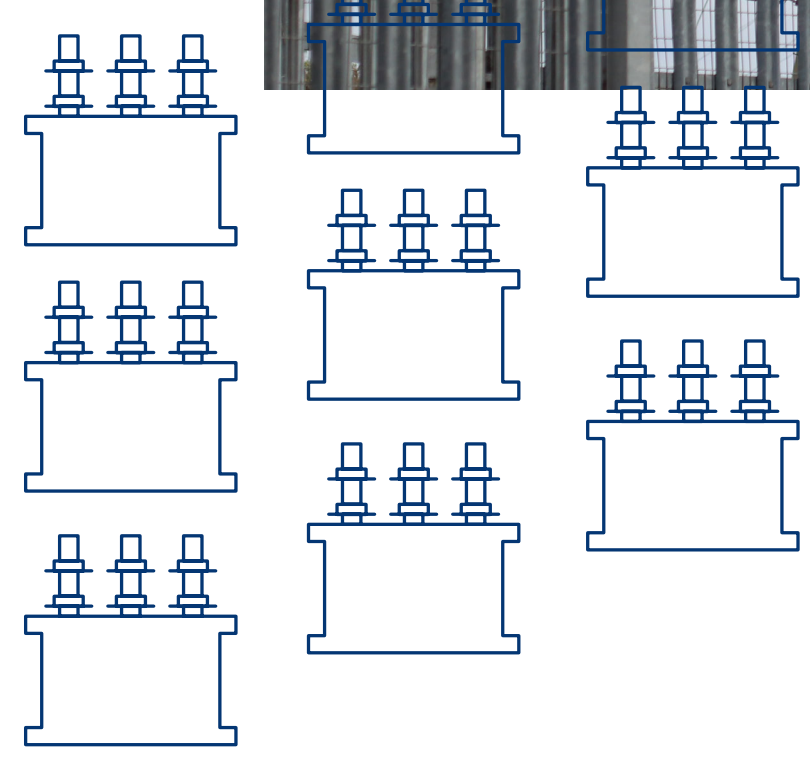
Because, ultimately, we want you to work with us to ensure that the energy infrastructure we build will be the best it can possibly be.

## What are we consulting on?

We want you to share your thoughts and opinions on our potential site for the proposed Corriemoillie Substation extension, where you think we can make improvements, and concerns about the potential impact of our work.

## Who we are consulting with

As well as communities, we are keen to hear feedback from a broad range of other stakeholders such as landowners, businesses, non-statutory consultees and statutory consultees.



[lisa.marchi@sse.com](mailto:lisa.marchi@sse.com)

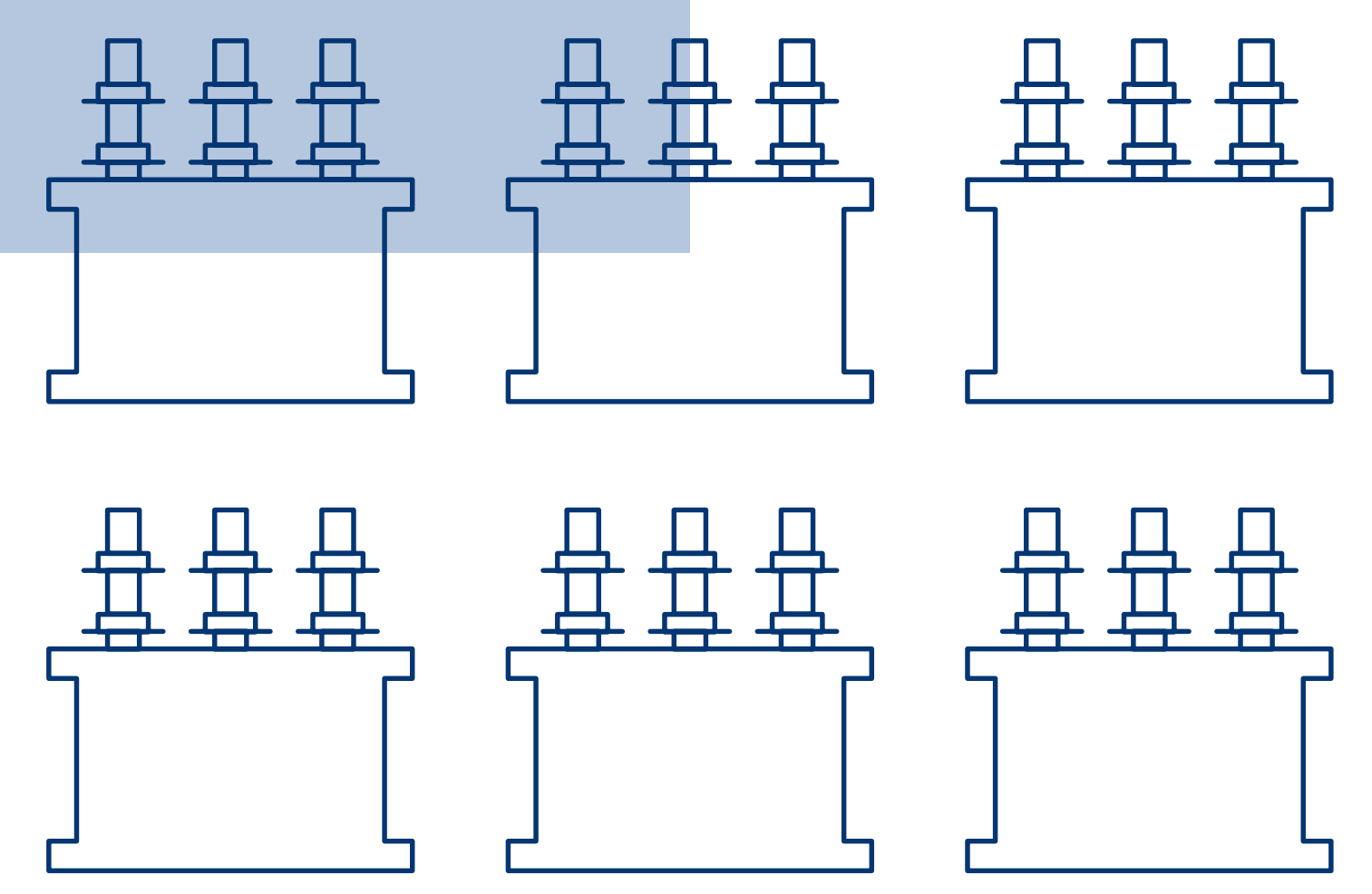


07825 015 507



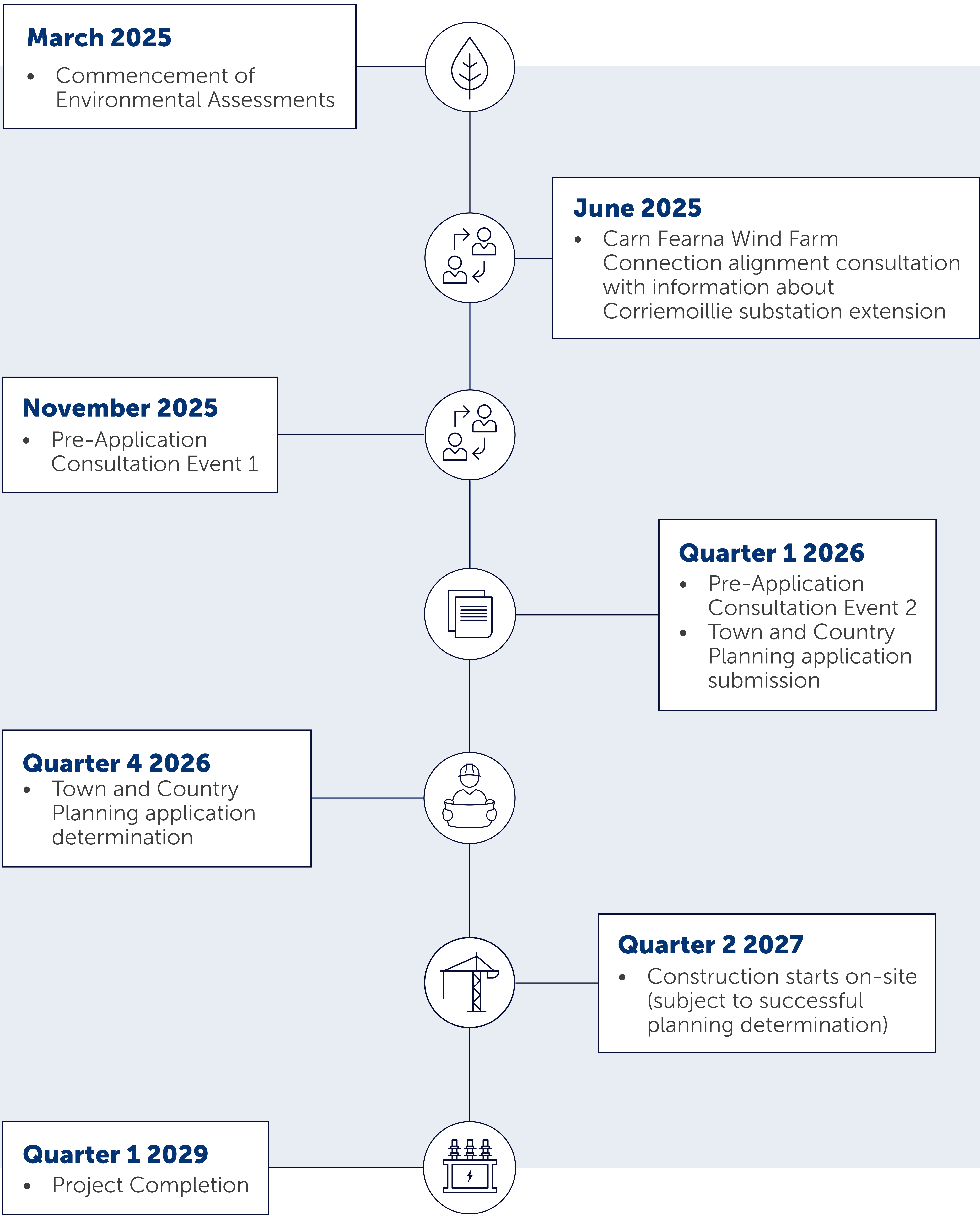
[ssen-transmission.co.uk/corriemoillie-substation-extension](https://ssen-transmission.co.uk/corriemoillie-substation-extension)





# Project timeline

\*dates may be subject to change.





# What happens next and how do I have my say?

**We understand and recognise the value of feedback provided by the community and stakeholders. Without this valuable feedback, we would be unable to progress projects and reach a balanced proposal.**

## Feedback

We will accept feedback from now until **Friday 12 December 2025**.

## How to provide feedback

Submit your feedback online by scanning the QR code on this page or via the form on our project webpage at: **[ssen-transmission.co.uk/corriemoillie-substation-extension](https://ssen-transmission.co.uk/corriemoillie-substation-extension)**

Email the feedback form to the Community Liaison Manager. Or write to us enclosing the feedback form at the back of the booklet.

## What we're seeking views on

We encourage all interested community members to fill in a feedback form when submitting feedback, however if you prefer, you can email us to provide your feedback or ask any questions.



To support everyone online, we provide accessibility and language options on our website through 'Recite Me'. The accessibility and language support options provided by 'Recite Me' include text-to-speech functionality, fully customisable styling features, reading aids, and a translation tool with over 100 languages, including 35 text-to-speech.

Please select "Accessibility" on our website to try out our inclusive toolbar."

## Our Community Liaison team

Each project has a dedicated Community Liaison Manager who works closely with community members to make sure they are well informed of our proposals and that their views, concerns, questions or suggestions are put to our project teams.

Throughout the life of our projects, you will hear from us regularly. We aim to establish strong working relationships by being accessible to key local stakeholders such as community councils, residents' associations and development trusts, and regularly engage with interested individuals.

## Community Liaison Manager

### Lisa Marchi

 SSEN Transmission, 10 Henderson Road, Inverness, IV1 1SN

 07825 015 507

 [lisa.marchi@sse.com](mailto:lisa.marchi@sse.com)

## Additional information:



The best way to keep up to date is to sign up to project updates via the project webpage:

**[ssen-transmission.co.uk/corriemoillie-substation-extension](https://ssen-transmission.co.uk/corriemoillie-substation-extension)**

You can also follow us on social media:

 [@assentransmission](https://www.instagram.com/assentransmission)

 [@SSETransmission](https://twitter.com/SSETransmission)



[lisa.marchi@sse.com](mailto:lisa.marchi@sse.com)



07825 015 507



[ssen-transmission.co.uk/corriemoillie-substation-extension](https://ssen-transmission.co.uk/corriemoillie-substation-extension)