

Marine surveys at Sandford Bay

We are conducting a series of offshore and nearshore marine surveys in and around Sandford Bay near Boddam in Peterhead over the next few months in connection with the Eastern Green Link 2 (EGL2) project.

The marine surveys will include:

1. Geophysical surveys in Sandford Bay, starting late May to end of June.
2. Geotechnical surveys in Sandford Bay, due to start in early July to August.
3. Potential unexploded ordnance (pUXO) target investigation, due to start August.

We are also carrying out onshore ecology, ground investigation, noise and soil surveys on the land adjacent to Sandford Bay, from around mid-June.

These surveys are required to inform the route for the marine cable element of this essential clean energy project. We appreciate that residents and the fishing community may be interested in our offshore activities, and we are pleased to provide more detail on the marine surveys below. Public access to the beach at Sandford Bay will not be impacted.

Notices to mariners will be issued ahead of all works. We are grateful for the cooperation of the local fishing community while we undertake these surveys, and we will continue to work with them and other marine users to understand how we can reduce any impact on their activities as we deliver this critical national infrastructure project.

Background to the project

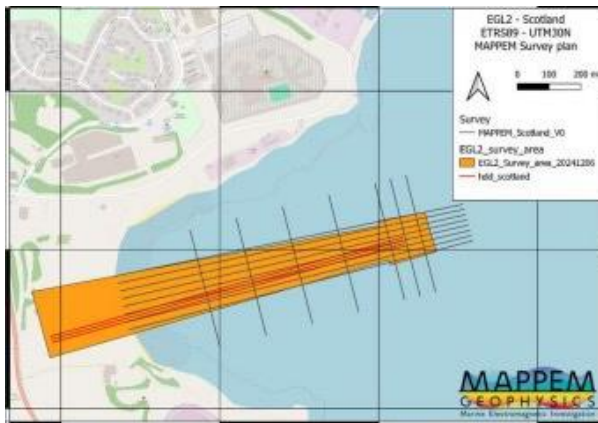
EGL2 is one of the most significant energy infrastructure developments the UK has seen in recent years. This joint venture project between SSEN Transmission and National Grid Electricity Transmission will create a 505km electricity superhighway to enable the transfer of renewable energy from Scotland to England (and vice versa) via a subsea cable. The two-gigawatt, high voltage direct current (HVDC) marine cable will run from a landfall point in Sandford Bay in Peterhead to a landfall at Fraithorpe Sands in Yorkshire.

Information on upcoming marine surveys

1. Late May to end of June 2025 - Geophysical surveys in Sandford Bay

Beginning in late May to the end of June 2025, we will conduct geophysical surveys within the waters of Sandford Bay. The surveys will gather information about the subsurface and seabed conditions that will be used to inform the design and construction of the landfall for the marine cable.

During this time, two vessels will perform repeated sweeps of the bay while towing sensors just above the seabed. The vessels will operate for 12 hours at a time during daylight hours and will return to Peterhead Port overnight.



One of the vessels that will conduct the geophysical surveys

Location of geophysical survey in Sandford Bay

2. July to August 2025 – Geotechnical surveys in Sandford Bay

Beginning in early July a jack-up barge will be sited at various positions offshore in Sandford Bay to take four core samples of the seabed and subsurface. The jack-up barge, which has a platform size of approx. 20m by 20m, will be assembled in Peterhead Port and towed into position in the bay. The survey work should be complete by early August or earlier.

A small crew will operate the barge 24 hours a day for the duration of the survey. The barge will be lit at night and some noise may be audible within the vicinity.

The geotechnical surveys will provide information about the physical condition of the seabed beneath Sandford Bay. This is needed to inform the design and construction of the landfall for the marine cable.



A jack-up barge will be used to conduct the geotechnical survey

3. August to October 2025 – Unexploded ordnance target investigations

From August to October, we will carry out unexploded ordnance (UXO) surveys and target investigations along the cable route using remote operated vehicles (ROVs).

The ROVs will enable us to safely scan the seabed without getting snagged in debris. In Peterhead, we will begin at the Sandford Bay end of the proposed marine cable route and will work along an 80m-wide corridor of the seabed to identify unexploded ordnance and investigate potential targets.



ROVs will be used to identify unexploded ordnance

In the event of changes to the survey dates due to weather or other factors, notices to mariners will be updated accordingly.

If you have questions

These survey works are required to inform the route for the marine cable element of this essential clean energy project. More information about the marine surveys and the project can be found at the Eastern Green Link 2 website www.easterngreenlink2.co.uk

Please contact EGL2's Community Liaison Manager at gillian.doig@sse.com or call on 07879 288666 if you have any questions.

Keep in touch

To sign up for email updates about EGL2 and other SSEN Transmission projects in the Peterhead area, please contact the Community Liaison Manager, Gillian Doig, at gillian.doig@sse.com or on 07879 288666