



Scottish & Southern
Electricity Networks

TRANSMISSION

Eday Grid Supply Point (GSP) and High Voltage Alternating Current (HVAC) Connection

Public Consultation Events

Eday and Finstown, Orkney
November 2025



ssen-transmission.co.uk/Eday

Contents

Powering change together	03	Marine cable route	10
Help shape our plans	04	Have your say	14
FAQ's	05	Your feedback	15
Eday HVAC Connection potential landfalls	06		

The consultation event will be taking place on:

5 November 2025, 11–3pm
Eday Heritage Centre, Eday, KW17 2AB

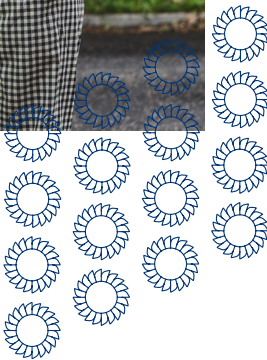
6 November 2025, 3–7pm
Firth Hall, Finstown, KW17 2EQ



Thank you to those who shared feedback that you would appreciate the opportunity to attend an Eday event in the evening. We have looked at how we can make this possible however due to ferry times and accommodation, we are unable to offer an evening session in Eday on the 5th of November.

We are therefore offering an online evening event on **Thursday 13th November** via Microsoft Teams where members of the project team will present the consultation material.

To access this online event please email eday.engagement@sse.com



Powering change together



The time has come to further enhance Scotland's energy infrastructure, providing power for future generations as we move towards net zero.

The shift to a cleaner, more sustainable future is about more than climate change. It's about ensuring future generations have the same opportunities to thrive as we have all had.

Countries around the world are investing in their energy infrastructure to support the demands of modern economies and meet net zero targets. The UK is leading the way in building a modern, sustainable energy system for the future.

We all have a part to play

When it comes to net zero, we have to be in it together. The UK and Scottish governments have ambitious net zero targets, and we're playing our part in meeting them.

We work closely with the National Energy System Operator (NESO) to connect vast renewable energy resources—harnessed by solar, wind, hydro and marine generation—to areas of demand across the country. Scotland is playing a big role in meeting this demand, exporting two thirds of power generated in our network.

But there's more to be done. By 2050, the north of Scotland is predicted to contribute over 50GW of low carbon energy to help deliver net zero. Today, our region has around 9GW of renewable generation connected to the network.

At SSEN Transmission, it is our role to build the energy system of the future.

We're investing over £20 billion into our region's energy infrastructure this decade, with the potential for this to increase to over £30bn. This investment will deliver a network capable of meeting 20% of the UK's Clean Power 2030 target and supporting up to 37,000 jobs, 17,500 of which will be here in Scotland.



Scan the QR code with your smartphone to find out more about how these policies have been assessed and determined.

Who we are

We're responsible for maintaining and investing in the electricity transmission network in the north of Scotland. We're part of SSE plc, one of the world's leading energy companies with a rich heritage in Scotland that dates back more than 80 years. We are also closely regulated by the GB energy regulator Ofgem, who determines how much revenue we are allowed to earn for constructing, maintaining and renovating our transmission network.

What we do

We manage the electricity network across our region which covers a quarter of the UK's land mass, crossing some of the country's most challenging terrain. We connect renewable energy sources to our network in the north of Scotland and then transport it to where it needs to be. From underground/subsea cables and overhead lines to electricity substations, our network keeps your lights on all year round.

Working with you

We understand that the work we do can have an impact on communities. So we're committed to minimising our impacts and maximising all the benefits that our developments can bring to your area. We're regularly assessed by global sustainability consultancy AccountAbility for how we engage with communities. That means we provide all the information you need to know about our plans and how they will impact communities like yours. The way we consult is also a two-way street. We want to hear people's views, concerns, or ideas and harness local knowledge so that our work benefits their communities: today and long into the future. You can share your views with us at: ssen-transmission.co.uk/talk-to-us/contact-us

Help shape our plans

At SSEN Transmission, we are committed to delivering a robust and transparent consultation process underpinned by inclusion and accessibility. As a stakeholder led business, we understand the importance of involving communities and key stakeholders throughout each stage of our development process.

This period of engagement in the development phase of the project is vital in shaping our proposals and to do this effectively, we need to capture feedback from stakeholders and harness local knowledge to identify key risks. We are following up our previous consultation event in September, to provide further information on the project to inform the early development phase.

We're committed to delivering a meaningful consultation process that actively seeks the views of everyone affected by our plans. That means making our plans clear and easily accessible, so that you can give us input throughout each stage of the development process.

We want you to share your thoughts and opinions on our plans, where you think we can make improvements, concerns about the impact of our work and what you think of any changes and refinements we've made. By telling us what you think, you will help shape our proposals. We want to harness your local knowledge so that we spot any unforeseen challenges early and maximise the potential benefits and opportunities for your communities. Because, ultimately, we want you to work with us to ensure that the energy infrastructure we build will be the best it can possibly be.

This event follows our first series of events, in September of this year, and provides information on the initial marine cable corridor options and the process taken to arrive at these. If you require additional support to submit your views, please contact our Community Liaison Team (eday.engagement@sse.com) who will happily assist you.

What we are consulting on today?

This event is focusing on the shortlisted landfill sites and the initial marine cable corridor options.

What is the status on potential GSP sites on Eday?

We are continuing our assessment of potential sites on Eday for the proposed GSP. We are assessing sites against environmental and technical constraints. We aim to select a potential site that is economically viable, technically feasible, minimises impacts on important resources or features of the environment and reduces disturbance to those living in it, working in it, visiting it or using it for recreational purposes.

We are currently identifying sites to take forward for more detailed assessment.

Who we are consulting with?

At this stage we are interested in feedback from a broad range of stakeholders including but not limited to, communities, stakeholders including fisheries and aquaculture, statutory and non-statutory consultees.

FAQ's

Following on from the events held in September, the project team have compiled responses to the most asked questions. Responses to these have been provided below.

Why is the GSP on Eday?

Eday represents the most suitable geographical location for a GSP to provide a connection for our current customer connection requirements.

Can we coordinate with other developments on the Orkney mainland and share cable routes with Onshore Windfarm developments which need to connect to the Finstown Substation?

We are engaging with Scottish Hydro Electric Distribution to understand other planned connections that may indicate a potential common route or other shared interfaces.

Can existing wind turbines on Eday that are currently constrained with a Distribution connection export power via the planned infrastructure?

Existing customers and new enquiries can contact the Distribution Network Operator (Scottish Hydro Electric Distribution) for a pre-application review, which would allow a network assessment to understand suitability. More information can be found here: [Generation Connections - https://www.ssen.co.uk/our-services/new-supplies/generation-connections/](https://www.ssen.co.uk/our-services/new-supplies/generation-connections/). Please note, there is currently a pause on new grid connection applications, as a result of the grid reform process currently being completed by the system operator, NESO. The process is expected to re-open in the coming months.

There are currently three identified Developers who will connect to the new GSP in Eday. If their projects don't go ahead, will the Eday GSP project go ahead?

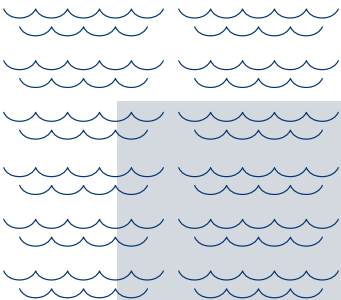
The project is not dependent on one particular development. If all three customers did not progress, the company which manages the distribution network (Scottish Hydro Electric Power Distribution) business would assess future needs and review the project scope appropriately. The GSP has capacity to accommodate further connection requests.

Will the connection be overhead or underground cable?

At this early stage in the projects development, a decision on if the cables on Eday and the Orkney Mainland will be undergrounded or via an overhead line has not been taken. Both technology types are being considered and assessed, based on technical, environmental and economical factors.

Can the map be more specific about where the infrastructure is to be located?

The project is currently at a very early stage of development. Therefore, the location of the final infrastructure has not yet been determined. The information on the maps provided presents the location of the different potential option areas for the various elements of the project.



Eday HVAC Connection potential landfalls

The project team have followed a systematic process to refine the potential landfall sites down to three options on Eday and the Orkney Mainland. The process involved the preliminary identification of option areas which met essential construction characteristics, these locations were presented at the consultation event in September of this year. These areas were then assessed against each other, considering environmental and technical constraints, with the top-ranking landfall sites progressing to further detailed assessment before selection of a preferred option.

This process has now concluded, and the landfalls selected on Eday are **Cusbay, Bay of Newark and the Bay of Greentoft**. The landfalls under consideration on Mainland Orkney are **Clivie Bay, ¹Wass Wick & Banks and Swannay**. All of the landfalls listed have been subject to detailed desk based studies relating to potential technical and environmental constraints both onshore and offshore.

The factors which formed the basis of this decision are listed out below.

Orkney Mainland

Landfall	Rationale for selection
Clivie Bay	Site is outwith with areas of high vessel traffic, ferry traffic and statutory harbour limits. Tidal currents at the site are comparably favourable for construction. No existing seabed infrastructure present in the vicinity of the landfall, including cables, oil and gas assets, spoil ground, outfalls or offshore renewables.
Swannay	This site is outwith any marine designated sites. Site is outwith areas of high vessel traffic, ferry traffic and statutory harbour limits. Tidal currents at the site are comparably favourable for construction. No existing seabed infrastructure present in the vicinity of the landfall, including cables, oil and gas assets, spoil ground, outfalls or offshore renewables.
Wass Wick/Banks	There are no wrecks or marine obstructions within the vicinity of these landfalls. No existing seabed infrastructure present in the vicinity of the landfall, including cables, oil and gas assets, spoil ground, outfalls or offshore renewables.

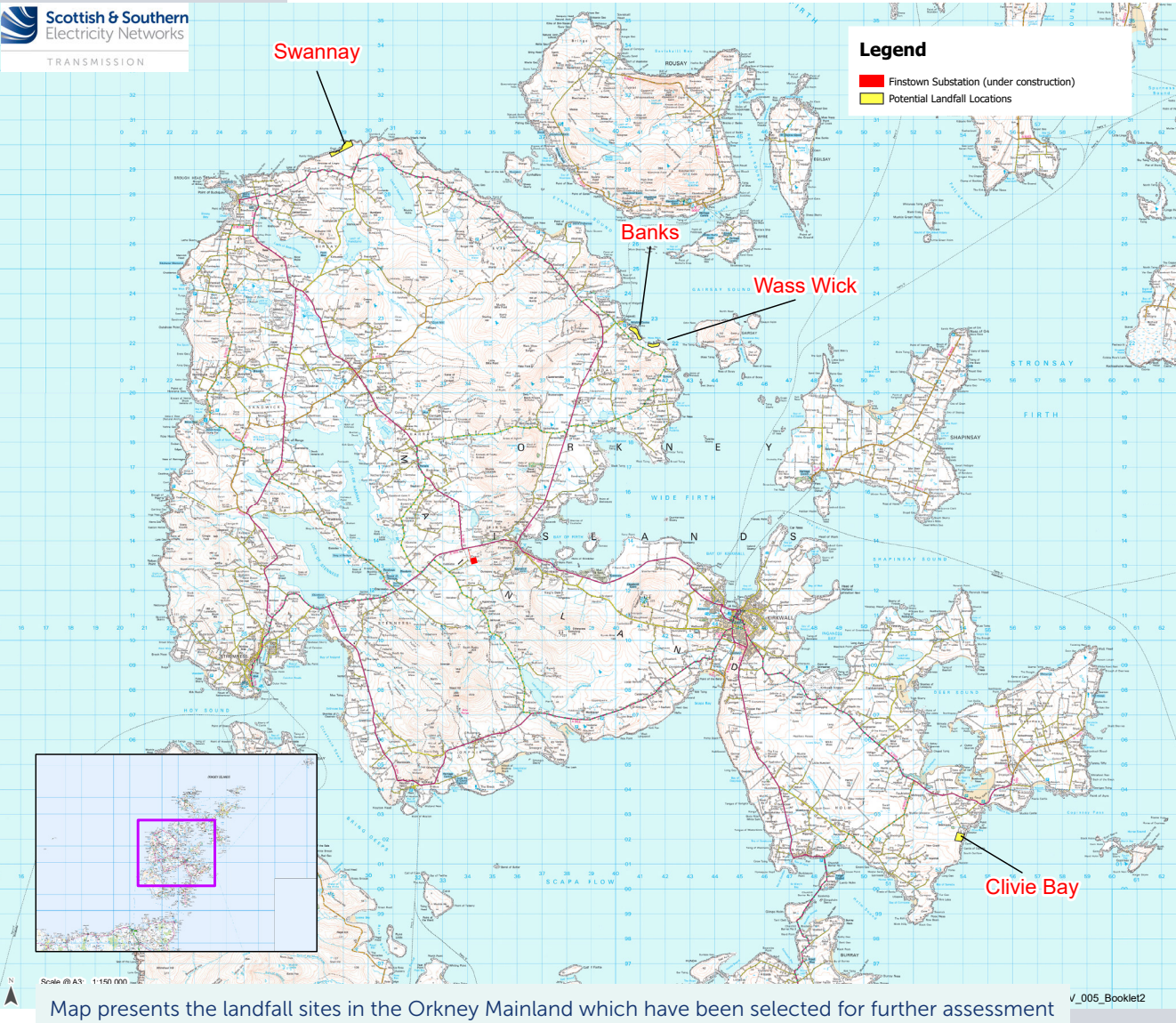
¹Given the proximity of the Wass Wick and Banks landfall options and the similar conditions at these landfalls, they have been taken forward as a single option for corridor development.

Eday

Landfall	Rationale for selection
Cusbay	This site offers favourable conditions for marine construction. Site is outwith areas of high vessel traffic and statutory harbour limits. No wrecks or marine obstructions present nearby landfall.
Bay of Newark	Site is outwith areas of high vessel traffic and statutory harbour limits. No wrecks or marine obstructions present nearby landfall.
Bay of Greentoft	This site offers favourable conditions for marine construction. Site is outwith areas of ferry traffic and statutory harbour limits. No existing seabed infrastructure present in the vicinity of the landfall, including cables, oil and gas assets, spoil ground or outfalls.


The marine environmental constraints considered are limited to desktop assessment at this stage and will be validated by the marine survey outputs.






Marine Cable route


The process for selecting our proposed marine cable corridors:




Stage 1
Preliminary landfall option identification, focusing on identifying potential landfall locations meeting essential construction characteristics.



Stage 2
Constraints identification, identifying environmental, social, and technical constraints associated with each landfall.



Stage 3
Corridor Optioneering, identifying potential subsea cable corridors based on relative impacts on constraints identified in Stage 2.



Stage 4
Corridor Development and Selection, including a multi-disciplinary review of constraints and interactions between them to develop a suitable subsea cable corridor.

The Eday GSP and HVAC connection project is currently commencing Stage 4 in the process detailed above.

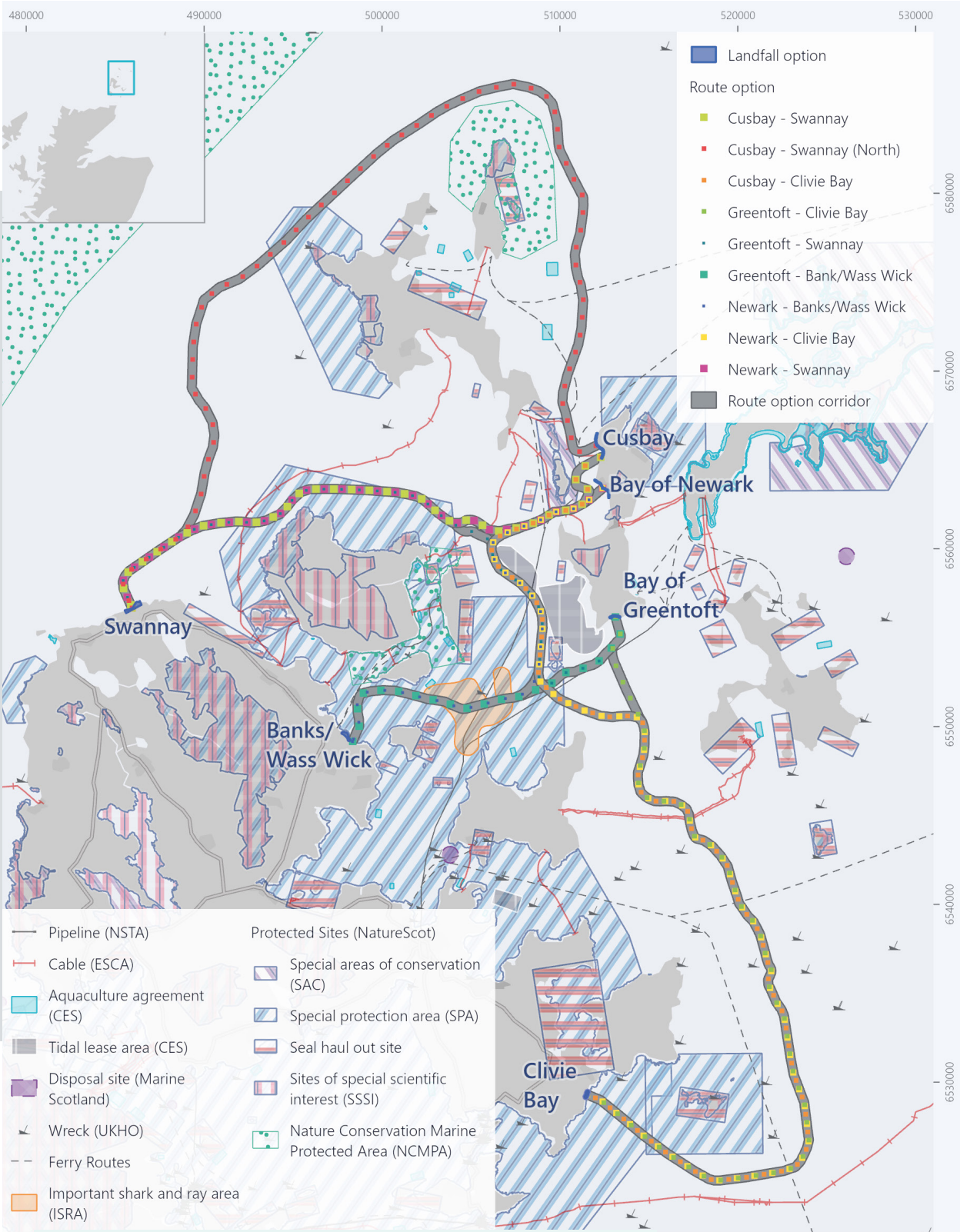
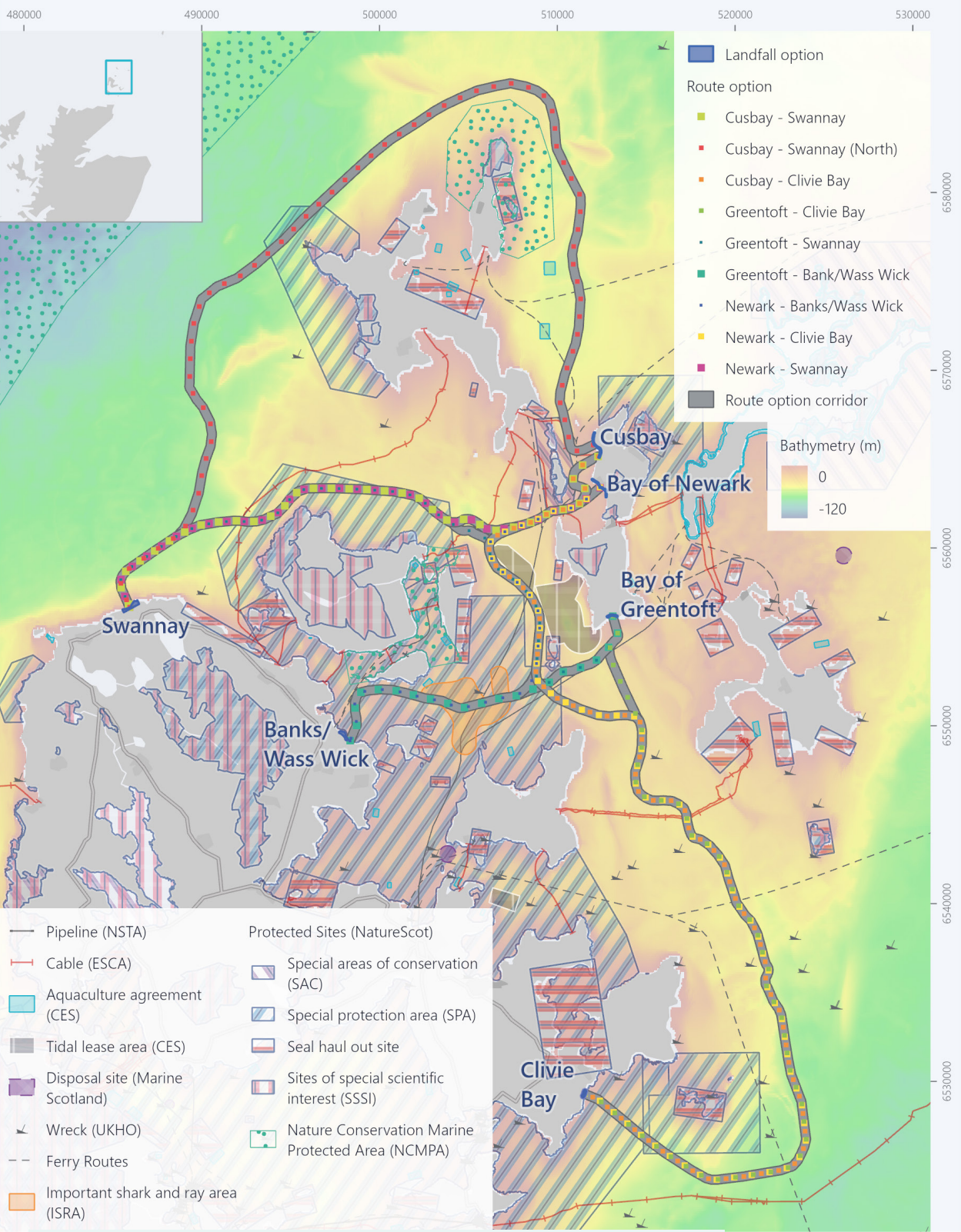
Our marine corridor selection process

Now that a refined number of landfalls have been identified on Eday and the Orkney Mainland, the project team have developed potential marine corridor options between both landfall sites. These corridors will be evaluated using Spatial Multi Criteria Analysis (SMCA) to look at a range of criteria and assess how constrained an area is, with the aim to identify corridors which have a limited overall impact. The evaluation criteria includes, but is not limited to:

- **Marine Environment:** Designated areas (e.g. MPAs), benthic habitats, interactions with other sea users (e.g. commercial fisheries, shipping/navigation), cultural heritage, fish ecology, marine mammals and ornithology.
- **Technical:** Sediment depth, presence of bedrock, glacial till, deposits or blown sand, seabed topography and tidal currents.



The initial marine corridors can be viewed on the map below. Corridors shown are an indicative width of 500m.



The 9 subsea cable corridor options developed between the shortlisted landfalls are shown alongside marine environmental constraints (with bathymetry).

The 9 subsea cable corridor options developed between the shortlisted landfalls are shown alongside marine environmental constraints.

Have your say

We understand and recognise the value of feedback provided by the community and stakeholders. Without this valuable feedback, we would be unable to progress projects and reach a balanced proposal.

The feedback period

We will accept feedback from now until **30 November 2025**.

How to provide feedback:

- Submit your feedback online by scanning the QR code on this page or via the form on our project webpage.
- Email the feedback form to the Community Liaison Manager, or write to us enclosing the feedback form at the back of this booklet.

What we’re seeking views on

We want to know your thoughts on the GSP and landfall sites under consideration. We’ll be actively looking to mitigate the impacts of the project as much as possible over the coming months, but it would be helpful to understand what you believe we should be doing to help minimise these impacts and if there are any opportunities to deliver a local community benefit you would like us to consider.

We encourage all interested community members to fill in a feedback form when submitting feedback, however if you prefer, you can email us to provide your feedback or ask any questions.

Our Community Liaison team

Each project has a dedicated Community Liaison Manager who works closely with community members to make sure they are well informed of our proposals and that their views, concerns, questions or suggestions are put to our project teams.

Throughout the life of our projects, you will hear from us regularly. We aim to establish strong working relationships by being accessible to key local stakeholders such as community councils, residents’ associations and development trusts, and regularly engage with interested individuals.



To support everyone online, we provide accessibility and language options on our website through ‘Recite Me’. The accessibility and language support options provided by ‘Recite Me’ include text-to-speech functionality, fully customisable styling features, reading aids, and a translation tool with over 100 languages, including 35 text-to-speech.

Please select “Accessibility” on our website to try out our inclusive toolbar.”

How to get in touch



eday.engagement@sse.com

Additional information:



The best way to keep up to date is to sign up to project updates via the project webpage:

ssen-transmission.co.uk/Eday

You can also follow us on social media:



@assentransmission



@SSETransmission

Your feedback

Thank you for taking the time to read this consultation booklet. In order to record your views and improve the effectiveness of our consultation, please complete this short feedback form.

Please complete in BLOCK CAPITALS. (Please tick one box per question only)

Q1. Do you have any comments about the potential locations of the Landfall?

Comments:

Q2. Do you have any comments about the initial high level marine corridor options identified?

Comments:

Q3. Do you fish in the area shown for subsea cable corridor options? Please provide details of the type of fishing you do i.e. mobile or static; and please provide an estimate of how often you fish in this area and the time of year.

☐ Yes ☐ No ☐ Unsure

Comments:

Q4. Do you have anything further you would like to provide comments on?

Comments:

Full name: **Email:**

Telephone: **Address:**

We would like to send you relevant communications via email such as invitations to stakeholder events, surveys, updates on projects, services and future developments from the Scottish and Southern Electricity Networks group listed below. If you are happy to receive email updates please opt in by ticking the box below. You can unsubscribe at any time by contacting us at stakeholder.admin@sse.com or by clicking on the unsubscribe link that will be at the end of each of our emails.

☐

If you would like to be kept informed of progress on the project, please tick this box.

Thank you for taking the time to complete this feedback form.
Please submit your completed form by one of the methods below:

Email: eday.engagement@sse.com
Online: ssen-transmission.co.uk/Eday

For information on how we collect and process your data please see our privacy notice available at today's event. This can also be obtained online at: ssen-transmission.co.uk/privacy

Comments forms and all the information from today's event will also be available to download from the project website.

We intend to use Artificial Intelligence (AI) to assist our experienced teams in the analysis of your feedback, so we can categorise key points raised more quickly. You can learn more about how we're utilising AI at: ssen-transmission.co.uk/AIFAQ

Any information given on the feedback form can be used and published anonymously as part of Scottish and Southern Electricity Networks consultation report. By completing this feedback form you consent to Scottish and Southern Electricity Networks using feedback for this purpose.

Scottish and Southern Electricity Networks is a trading name of: Scottish and Southern Energy Power Distribution Limited Registered in Scotland No. SC213459; Scottish Hydro Electric Transmission plc Registered in Scotland No. SC213461; Scottish Hydro Electric Power Distribution plc Registered in Scotland No. SC213460; (all having their Registered Offices at Inveralmond House 200 Dunkeld Road Perth PH1 3AQ); and Southern Electric Power Distribution plc Registered in England & Wales No.04094290 having its Registered Office at Number One Forbury Place, 43 Forbury Road, Reading, Berkshire, RG1 3JH which are members of the SSE Group.

