



Scottish & Southern
Electricity Networks

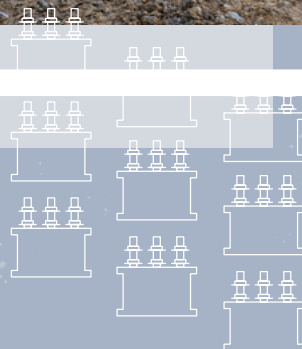
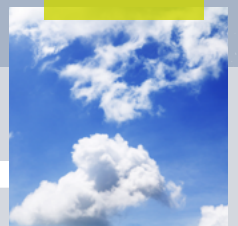
TRANSMISSION

Shetland AC Connections:

Energy Isles 132kV Wind Farm Connection to proposed Yell substation

Pre-Application Consultation 2 – Alignment

July 2026



ssen-transmission.co.uk/energy-isles-connection

Contents

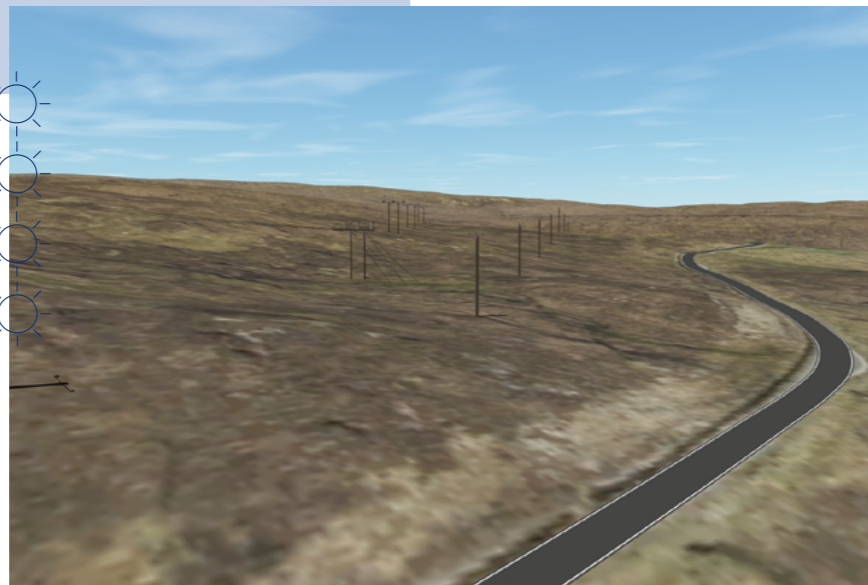
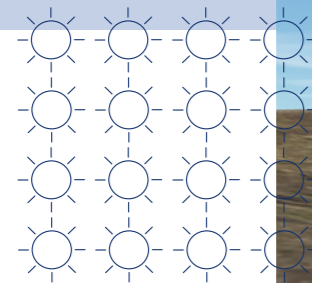
Powering change together	3	Selecting an alignment	16
The story so far	4	Energy Isles Alignment options	18
The Shetland Strategy	5	Alignment Option Constraints	20
Shetland projects overview	6	Alignment Considerations	22
About the project	8	Energy isles connection preferred alignment	23
Technology options	9	Building a lasting legacy	26
Energy Isles Connection: Proposed Technology	10	Delivering a positive environmental legacy	28
Route Selection Consultation Recap	12	Project timeline	29
Help shape our plans	13	Our next consultation	30
Working with landowners	14	Next steps	31
Section 37 consent process	15	Your feedback	33

The Consultation Event will be taking place on:

Wednesday 1 July

Mid Yell Hall, Mid Yell, Yell, ZE2 9BN
1:00 - 5:00pm

Burravoe Hall, Yell, ZE2 9BA
6:00 - 8:00pm



Powering change together

If we want to deliver on clean power and energy security targets and provide power for future generations, upgrades to Scotland’s electricity transmission infrastructure are needed.

The shift to a cleaner, more sustainable future is about more than tackling the impact of climate change, it’s about ensuring that future generations can thrive.

Countries around the world are investing in their energy infrastructure to support increasing electricity demands and to deliver on clean power targets and the UK is leading the way in building a modern, sustainable energy system for the future.



We all have a part to play

The UK and Scottish governments have set ambitious energy security and clean power targets, and we all have a part to play in delivering them.

At SSEN Transmission, we work closely with the National Energy System Operator (NESO) to connect vast renewable energy resources - like solar, wind, hydro and marine generation — to areas of demand across the country. Scotland will play a particularly big role in meeting increasing electricity demand.

But there is more to be done. By 2050, the north of Scotland is expected to contribute more than 50GW of low carbon power to the GB energy system. Today, the region has around 11GW of renewable generation connected to the network.

At SSEN Transmission, it is our role to build the energy system of the future. To do that, we are planning to invest around **£29 billion** in the coming years to upgrade the electricity transmission network in the north of Scotland. It’s an investment that will unlock cleaner, more secure energy for homes and businesses now, and for generations to come.

By 2050, annual electricity demand is expected to at least double - our investment will support the connection of more clean power to meet that demand to the GB electricity network, supporting up to **17,500 jobs in Scotland**, with more than **8,000** of those in the north of Scotland, along the way.

Who we are

We are responsible for maintaining and investing in the electricity transmission network in the north of Scotland. We are part of SSE plc, one of the world’s leading energy companies with a rich heritage in Scotland that dates back more than 80 years. We are also closely regulated by the GB energy regulator Ofgem, who determines how much revenue we are allowed to earn for constructing, maintaining and renovating our transmission network.

What we do

We manage the electricity network across our region which covers a quarter of the UK’s land mass, crossing some of the country’s most challenging terrain. We connect renewable energy sources to our network in the north of Scotland and then transport it to where it needs to be. From underground/subsea cables and overhead lines to electricity substations, our network keeps your lights on all year round.

Working with you

We understand that the work we do can have an impact on communities and we are committed to minimising our impacts and maximising all the benefits that our developments can bring to your area.

To do that we provide all the information you need to know about our plans and how they will impact communities like yours. The way we consult is also a two-way street and we want to hear people’s views, concerns, or ideas – and harness local knowledge – so that our work benefits communities today and long into the future. You can share your views with us at: ssen-transmission.co.uk/talk-to-us/contact-us/

The story so far

The Shetland Islands have a vital role to play in the UK's clean energy future. This has been formally recognised through independent national planning. In March 2024, the National Energy System Operator's (NESO) Beyond 2030 report confirmed that additional transmission infrastructure is needed, both on Shetland and to the Scottish mainland to connect future renewable generation and to support security of electricity supply across Great Britain. This assessment forms the basis of the Shetland Strategy - NESO and Ofgem have tasked us with providing coordinated response to a confirmed need.

From National Plan to Local Action

NESO's findings were based on a comprehensive assessment of how the electricity network must evolve to:

- Meet net zero targets;
- Manage increasing demand;
- Support economic growth and
- Maintain resilience

Shetland was identified as a strategically important location, not because of any one single project, but due to its long-term potential and critical role in the future energy network.

In December 2024, Ofgem, the GB energy regulator, endorsed this position by approving funding for early-stage development works in Shetland. This sits alongside Ofgem's assessment of NESO's broader Clean Power 2030 (CP2030) recommendations. Ofgem's determination on this was delivered in December 2025, with justification on the need for transmission reinforcement in Shetland being agreed, with further investigation required around some of the technical detail, particularly the voltage level.

Why this matters

The Shetland Strategy proposes a technologically robust solution, that is coordinated across the region and is shaped by local engagement and insight. The strategy serves Shetland's known energy needs as well as provision of headroom for future growth. We have looked to minimise the amount of infrastructure to reduce the impact on communities and the environment.



You can read the NESO Beyond 2030 report here



The Shetland Strategy

We are leading some exciting projects to power change in the UK.

The Shetland Islands can play a major part in helping Great Britain achieve Net zero targets.

There are a number of generation projects (e.g. offshore wind farms) and demand projects (e.g. hydrogen production) in the development pipeline, each project at a slightly different stage, that requires to connect to the electricity transmission network in Shetland.

Rather than look at each project on an individual basis, we have taken a whole-system approach and developed a strategic design that should accommodate both near-term and long-term network needs.

This strategic approach enables SSEN Transmission to identify the most efficient design for Shetland.

We submitted these strategic plans to Ofgem, the electricity industry regulator, as part of our Clean Power 2030 submission in early 2025.



March 2024

NESO publishes Transitional Centralised Strategic Network Plan (Beyond 2030) confirming Shetland requirement



December 2024

Ofgem funds early-stage development



July 2025

Ofgem publishes Clean Power 2030 minded to position



December 2025

Ofgem CP2030 need justified, voltage under review



August 2026

Voltage confirmation from Ofgem expected

Shetland Strategy



ssen-transmission.co.uk/shetlandstrategy



Shetland projects overview

- 1 Yell wind farm connections**
Connects the wind farm projects to Yell Substation.
- 2 Yell Substation**
A substation to connect the two wind farm projects, and also offers opportunity for further expansion and resilience to the Distribution supply on the island.
- 3 Yell Marine link**
A subsea cable, with associated onshore circuit to connect Northern Substation Hub to Yell Substation.
- 4 Northern Substation Hub**
A 2GW HVDC converter station which connects to a 2nd subsea link to mainland Scotland. This will also be the site of substations which allow the island of Yell and the Scotwind and Greener Grid projects to connect to the Transmission Network. This site will also have capacity to support future unconfirmed projects like electrification of oil and gas platforms.
- 5 HVDC subsea link 2**
A subsea cable connecting the new converter site at the Northern Substation Hub on Shetland with a new converter site on the Scottish mainland.
- 6 Connection from Northern Hub to existing Kergord**
Circuits running between Kergord, Kergord 2 and the Northern Substation Hub.
- 7 Hamarigrind Substation (Previously Kergord 2)**
A substation which changes the network voltage from 132kV to 220kV. A higher voltage means less circuits north of this point, minimising our impact on communities and the environment.
- 8 Existing infrastructure**
The Kergord site is home to our existing HVDC converter station, connecting Shetland to mainland Scotland for the first time through a subsea transmission link. It is also where the Viking wind farm connects. Under construction currently is a transmission link to Gremista, where it will connect into the Distribution network.



Third party developer projects

Our Shetland Strategy takes into consideration the following projects:

- A Energy Isles** Onshore wind being developed by Statkraft.
- B Beaw Field** Onshore wind being developed by Statkraft.
- C Greener Grid** Hydrogen electrolyser being developed by Statkraft.
- D Arven** Offshore wind being developed by Ocean Winds.
- E Stoura** Offshore wind being developed by ESB.
- F Mossy Hill** Onshore wind being developed by Statkraft.
- G Existing infrastructure** Viking Wind Farm constructed by SSE Renewables.

About the project

The Energy Isles project will connect the approved Energy Isles Wind Farm on Yell to the proposed Yell substation. It comprises a 132 kV single circuit connection, delivered through a combination of overhead line and underground cable between the wind farm substation and the proposed Yell substation.

Why is this project needed?

The Energy Isles wind farm connection is required to enable renewable electricity generated on Yell to be connected to the wider transmission network. A new transmission connection is necessary to export this power safely and reliably, as the existing network on Shetland does not have sufficient capacity to accommodate this new generation.

The connection forms part of SSEN Transmission's wider strategic approach for Shetland, supporting the coordinated development of renewable energy and associated transmission infrastructure. The project aligns with the UK Government's Clean Power 2030 ambitions, helping to accelerate clean power connections and maximise the contribution of renewable generation to the national electricity system.

The development is in line with SSEN Transmission's commitment and statutory licence obligations to facilitate connections to the grid through an economical, efficient and coordinated approach to transmission reinforcement.

What could this look like?

The suitability of both overhead line and underground technology options are under consideration to provide the connection.



Technology options

The table below presents a summary of the respective advantages and disadvantages of both technologies.

Overhead Line

Advantages

- Easier to cross challenging terrain like valleys, hills, watercourses, roads and other utilities.
- Can travel long distances with no requirement for additional equipment to be installed at substations to aid in stability of the network.
- Quicker, easier and cheaper to maintain and to identify and repair faults compared to underground cable.
- Lower cost option when compared to underground cable.
- Capacity can be increased, within limits, by replacing or increasing the number of conductors. For underground cables, whole lengths of new cables would need to be installed.

Disadvantages

- Potential for significant landscape and visual impacts
- Overhead lines are exposed to possible weather damage
- Potential for audible noise and radio interference issues

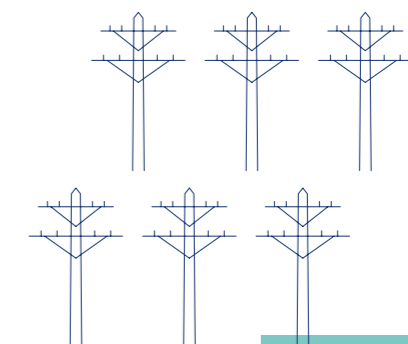
Underground Cable

Advantages

- Minimal landscape and visual impact from cables once construction has been complete
- No audible noise and radio interference issues
- Due to being underground not subjected to the same weather elements as overhead line

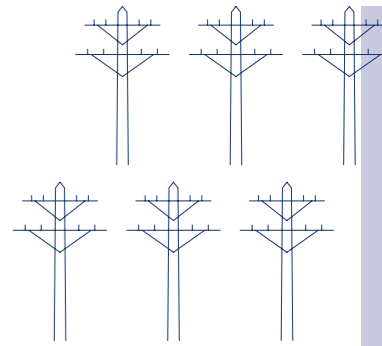
Disadvantages

- Routing is difficult when crossing challenging terrain
- Fault detection of long cable sections is challenging, and repairs can take a substantial amount of time and cost
- Over long distances cables can require additional equipment at substations to maintain stability of the network, resulting in larger substations and higher costs
- Cable is more expensive than overhead line to install and operate
- Construction corridor can be wide, particularly at higher voltages, and can potentially result in greater habitat destruction and ecological damage.



Energy Isles Connection: Proposed Technology

Technology options were assessed against a range of criteria including system requirements, technical, environmental, health and safety and cost. Based on results from the technology option appraisal, the following options have been identified as the preferred technology for the Energy Isles 132kV connection.



132kV Trident Wood Pole

The project's 132kV single circuit OHL would be supported by Trident wood poles. Each timber pole has three arms arranged in a trident shape to support the conductors that carry electricity, with a single circuit providing sufficient capacity for the project. Compared with larger steel pylons, wood trident poles are slimmer and generally lower in height, helping them sit more sympathetically within the landscape. They can also be installed using smaller construction equipment, which can reduce ground disturbance during construction.



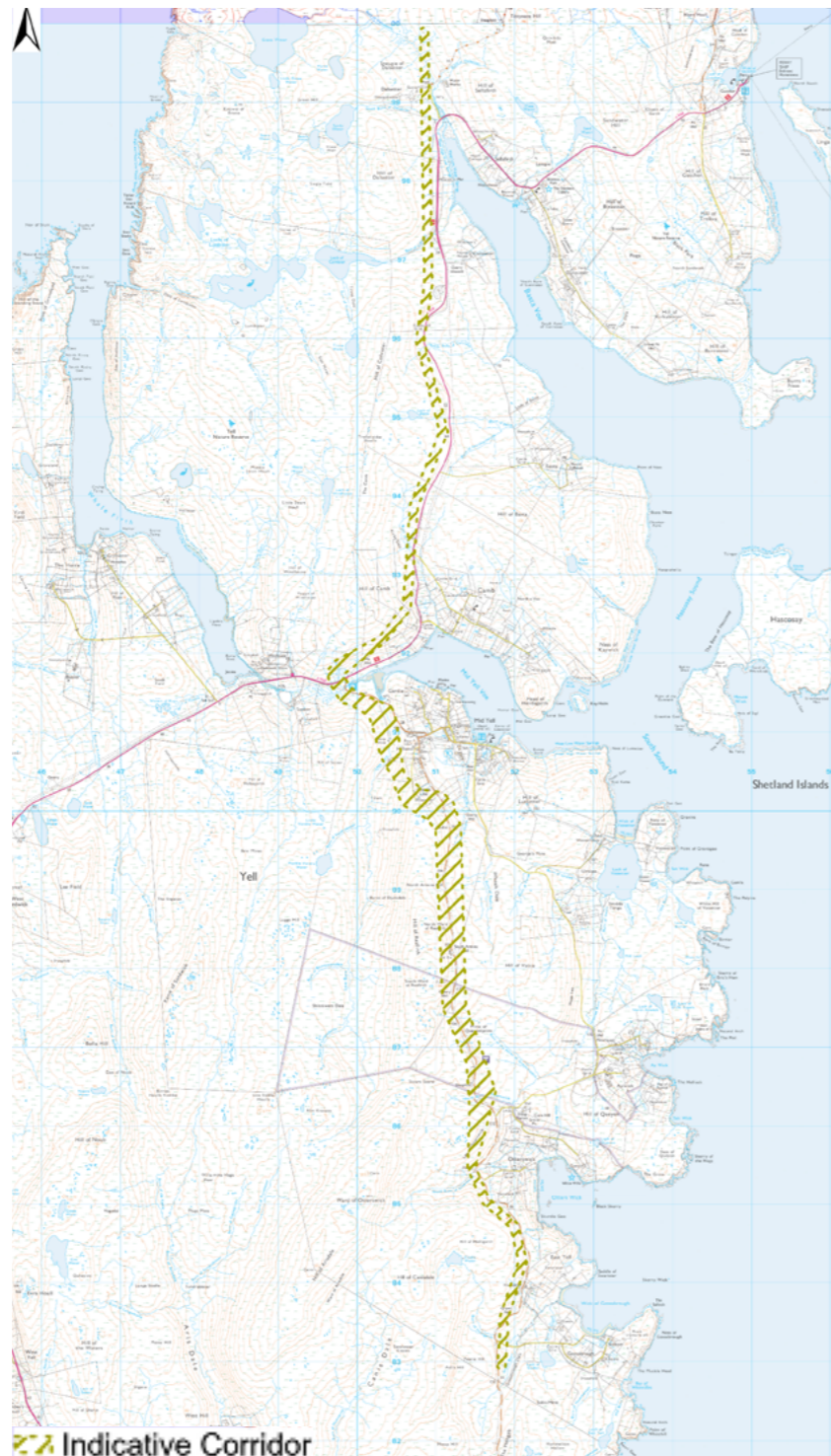
Underground Cable

Underground cable may be used at either end of the Energy Isles route where the alignment passes close to existing wind farm infrastructure and associated facilities. In these locations, the electricity conductors are installed below ground within a trench, with the land reinstated following construction. Using underground cable in these constrained areas can help to reduce visual effects and maintain safe clearances from existing infrastructure. While construction requires temporary ground disturbance, this approach can offer a more discreet solution in areas where space is limited or where there are existing operational assets.

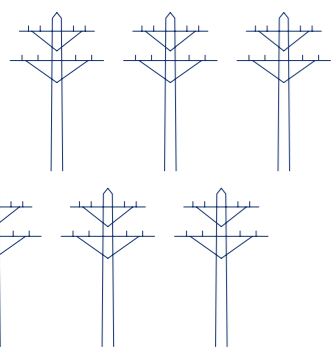
Route Selection Consultation Recap

Following completion of a corridor selection process, we undertook a systematic routing assessment within the proposed corridors. This assessment ensured that the preferred route satisfies the technical requirements, offers value for money, and minimises impacts on the environment and disturbance to those living and working in the area.

Route options were identified and presented at consultation events in June 2021. A proposed least constrained route running up the east coast of the Island, between the proposed Yell Substation north of Burravoe, and the proposed Energy Isles Wind Farm site, was identified as the preferred option to be taken forward for alignment development. This route is shown in the figure below.



Indicative Corridor



Help shape our plans

At SSEN transmission, we are committed to delivering a robust and transparent consultation process underpinned by inclusion and accessibility. As a stakeholder led business, we understand the importance of involving communities and key stakeholders throughout each stage of our development process.

This period of engagement in the development phase is vital in shaping our proposals and to do this effectively, we need to capture feedback from stakeholders, harness local knowledge to identify risks in key areas of the route and explore potential community benefit opportunities.

Today we are presenting our approach to developing the Energy Isles 132kV wind farm connection project, including technology options, environmental considerations, the alignment process, alignment selection and presenting maps which aim to give stakeholders and community members a better visual representation of the work on the project to date.

If you require additional support to submit your views, please contact our Community Liaison Team on ShetlandEngagement@sse.com who will happily assist you.

What we are consulting on today

Site surveys, engineering analysis and consultation feedback for the Energy Isles 132kV wind farm connection project have helped us identify our proposed technology and alignment option within the study area. This consultation is an opportunity to present our proposal, explain our approach to developing the project, and outline the reasoning behind our early proposals. We are keen to hear stakeholders' views on the proposals and any further considerations that should be taken into account as the project moves into the next stage of development.

Who we are consulting with

We are keen to hear feedback from a broad range of stakeholders including but not limited to residents, landowners, businesses, non-statutory consultees and statutory consultees such as local authorities, Nature Scot, SEPA, Historic Environment Scotland.

We would encourage all those with an interest to submit their views through this consultation by submitting a feedback form.



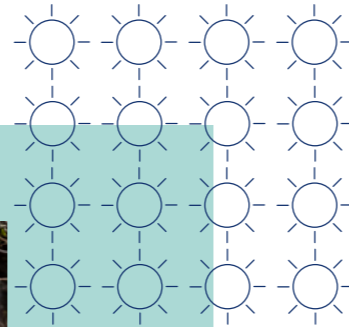
Working with landowners

SSEN Transmission recognises landowners and occupiers as key stakeholders in the development of our projects and is committed to consultation and engagement with all parties likely to have an interest in our proposals.

SSEN Transmission will be required to carry out engineering and environmental surveys to inform the design process. Consent will be sought from affected landowners and occupiers in advance of these surveys.

As the project design develops, we will work with landowners and occupiers to mitigate the impact of our infrastructure on their properties. Our team of dedicated land managers will be on hand to answer queries and address concerns throughout. Once the overhead line design and associated works is finalised, we will be required to secure the appropriate land rights from the relevant parties for all infrastructure.

Our land managers will provide updates to all affected landowners and residents once this process progresses.



Section 37 consent process

The legislation governing the consenting of overhead line (OHL) projects in Scotland is the Electricity Act 1989. Applications for consent to construct and operate new overhead lines are made under Section 37 of this Act and are referred to as "Section 37 Consents".

The Section 37 application will be accompanied by an Environmental Impact Assessment (EIA) Report, as well as standalone reports such as a planning statement, and detailed design drawings. A Pre-Application Consultation (PAC) Report will also be provided, and this will provide details of the public and stakeholder consultation undertaken, a summary of the feedback received, and our response to that feedback.

We plan to submit our Section 37 application for the Energy Isles wind farm connection project to the Scottish Government's Energy Consents Unit (ECU) in 2027. Once an application for consent has been submitted, all documents relating to the submission will be made publicly available on the ECU portal and our own website and printed copies will also be provided at publicly accessible locations.

Please note that feedback provided as part of this initial pre-application consultation event are not formal representations to the Energy Consents Unit (ECU). Once an application for consent has been submitted, there will be an opportunity for the public to make formal representations to the ECU before it takes a decision. We will update stakeholders once the application for consent has been submitted and we will also publish newspaper advertisements to inform local communities and the public of the applications being made to Scottish Ministers.

Determining a Section 37 application and communicating outcomes

Section 37 applications are determined on a case-by-case basis by the Scottish Ministers.

We anticipate receiving a decision on the consent application within 12 months from the application date, however timescales may vary.

When a decision is made, the ECU will send us a decision notice, copying in the local planning authorities and other consultation bodies. The decision notice is a record of the reasons for the decision and, if consent is granted, it contains the conditions that must be satisfied to implement the consent.

The ECU and local planning authorities will publish the decision notice via their own channels, and we must publicise the outcome on our website, in the Edinburgh Gazette and in a local newspaper. We will also communicate the decision by mainstream media and other various means, including email updates to Elected Members and those signed up to project updates, social media, and press releases.



Selecting an alignment

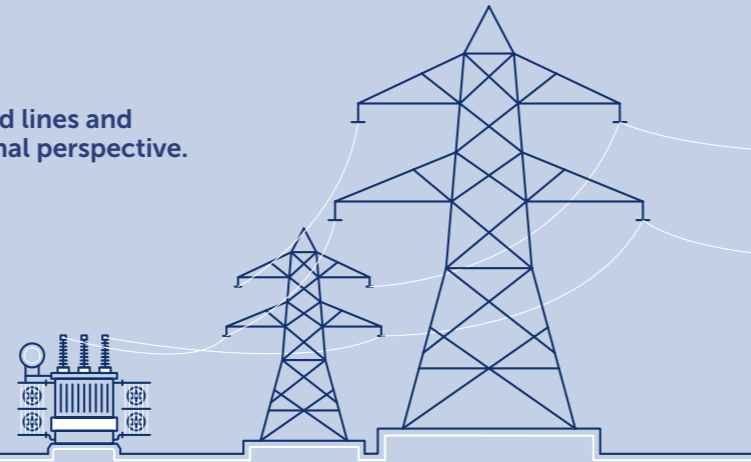
The consideration of alignment options and design solutions brings together work by four main disciplines:

Engineering Team

Who identify engineering constraints and where overhead lines and cables can be installed from a construction and operational perspective.

Key considerations include:

- Infrastructure crossings
- Environmental constraints
- Ground conditions
- Accessibility
- Proximity to existing infrastructure and properties



Communities Team

Who work with communities and make sure that their feedback during the consultation process is closely considered during project refinement.

Key considerations include:

- Community engagement
- Consultation responses review
- Recreational areas and areas of local interest



Land Team

Who engage with landowners to identify key land use constraints.

Key considerations include:

- Landowner engagement
- Mitigating effects of infrastructure on land and properties
- Reaching land agreements



Consent and Environment Team

Who identify local and national planning policy positions, key environmental, community and social constraints along the alignments which the new infrastructure could impact upon.

Key considerations include:

- Engagement with statutory consultees and planning authorities including submitting consent applications to consenting authorities
- Results of specialist environmental surveys including archaeology, ornithology, ecology, geology and hydrology
- International environmental designations including Special Areas of Conservation (SACs - designated for habitats), Special Protected Areas (SPAs - designated for bird species), Sites of Special Scientific Interest (SSSI), Ramsar sites (wetlands of international importance identified under the terms of the Ramsar Convention) and World Heritage Sites
- National designations including Scheduled Monuments, Listed Buildings, National Scenic areas, National Nature Reserves, Gardens and Designed Landscapes
- Regional environmental sensitivities including Wild Land Areas and Special Landscape Areas
- Local environmental aspects including visual amenity, local and RSPB nature reserves, recreation uses



Striking a balance

When selecting an alignment, we need to carefully balance key considerations relating to engineering, environment, cost and social aspects, in each section of the overhead line route.

We then consider the likely effect and level of impact of each consideration, which will vary from section to section. This can be based on how populated the area is, the outcomes of environmental and engineering surveys, stakeholder and community feedback, the presence of peat, the local water environment, if there is existing infrastructure we need to avoid, if the effects on land and property can be mitigated and if a constructable proposal can be identified.

Ultimately, we need to balance a range of factors and present the solution we consider most viable for consultation. We consulted on our proposed route in June 2021 and have now confirmed the route option we are taking forward. We are now consulting on our proposed alignment within the route.

Energy Isles Alignment options

All proposed alignment options are presented as hybrid solutions. This means they include sections of underground cable at either end of the route, where the proposed infrastructure comes close to consented wind farm infrastructure, with the remainder of the alignment proposed as overhead line supported by wood trident pole structures. The overall alignment would be approximately 20.6 km in length. Further information on each alignment option, together with visual representations, is provided below.

Alignment option 1

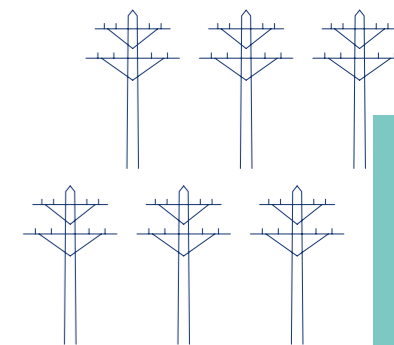
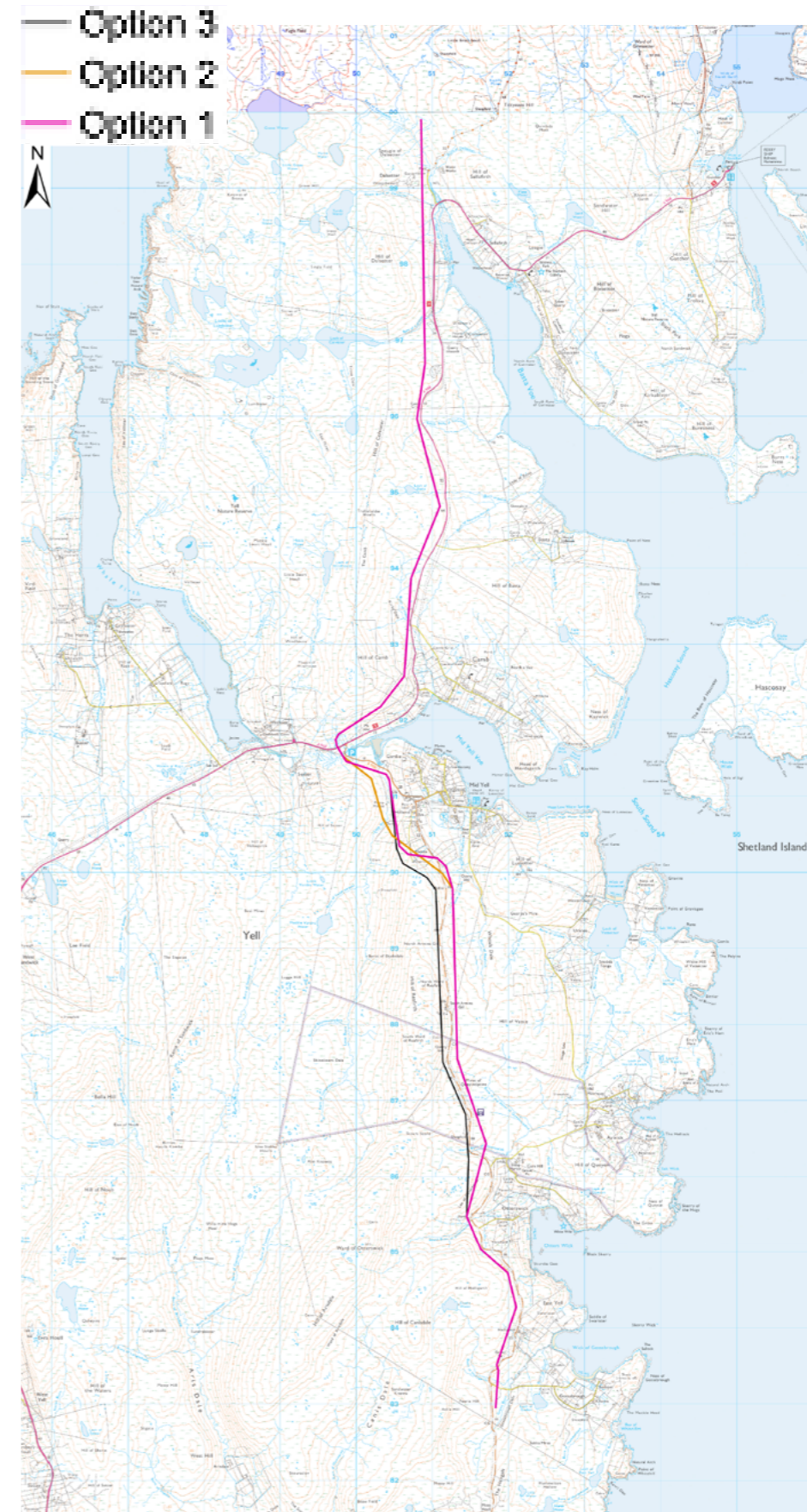
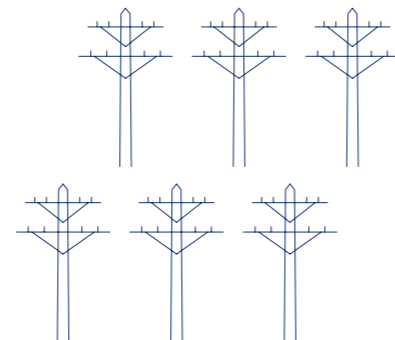
Option 1 follows the eastern side of the B9081 north towards Mid Yell, before continuing along the road corridor to the west of the settlement and east of Laxa Burn. This alignment would place the route further from the telecom mast, but it would require crossings of the existing distribution network. South-west of Mid Yell, the route also passes through more challenging terrain and takes a longer path around the settlement before turning north towards Energy Isles wind farm.

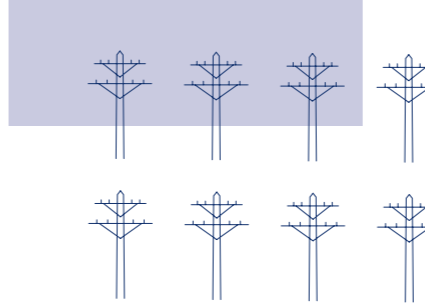
Alignment option 2

Option 2 follows a similar route to Option 1, but with a deviation west of Mid Yell. It remains further from the B9081 passing to the west of Laxa Burn before merging back with Option 1 as the route turns around Mid Yell and heads north towards Energy Isles wind farm.

Alignment option 3

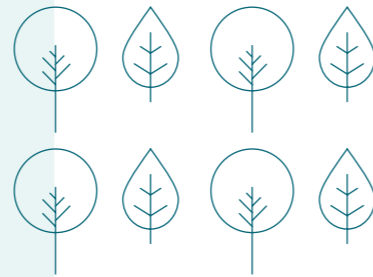
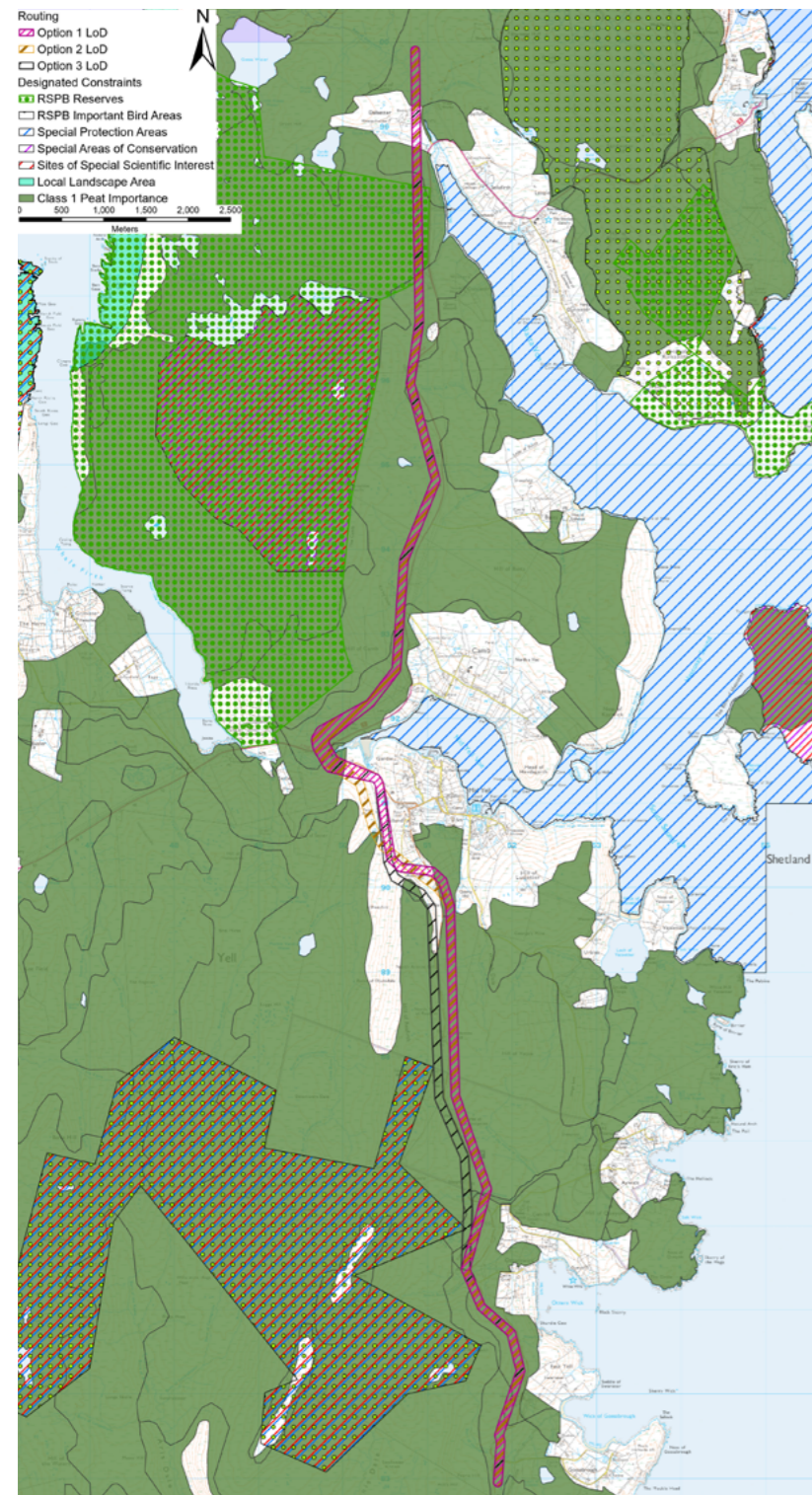
Option 3 generally follows the western side of the B9091 as it heads north towards Mid Yell. This alignment avoids interaction with the existing distribution network, steers clear of the deepest peat to the west of Aywick and helps to reduce landscape and visual effects by limiting the extent to which the line interrupts views towards the sea. Around Mid Yell, the route takes the shortest path, reducing the number of burn crossings and passing through areas of shallower peat before turning north towards the proposed Yell substation. The alignment has also been developed to reduce the number of angle structures by maintaining a relatively straight route close to the A968, which would also help to support construction access.



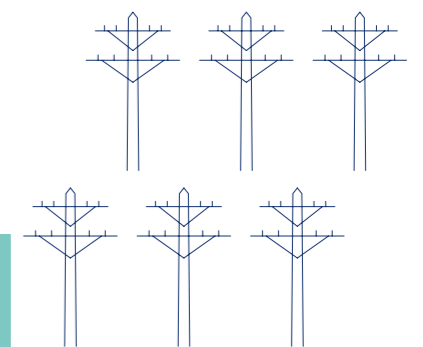
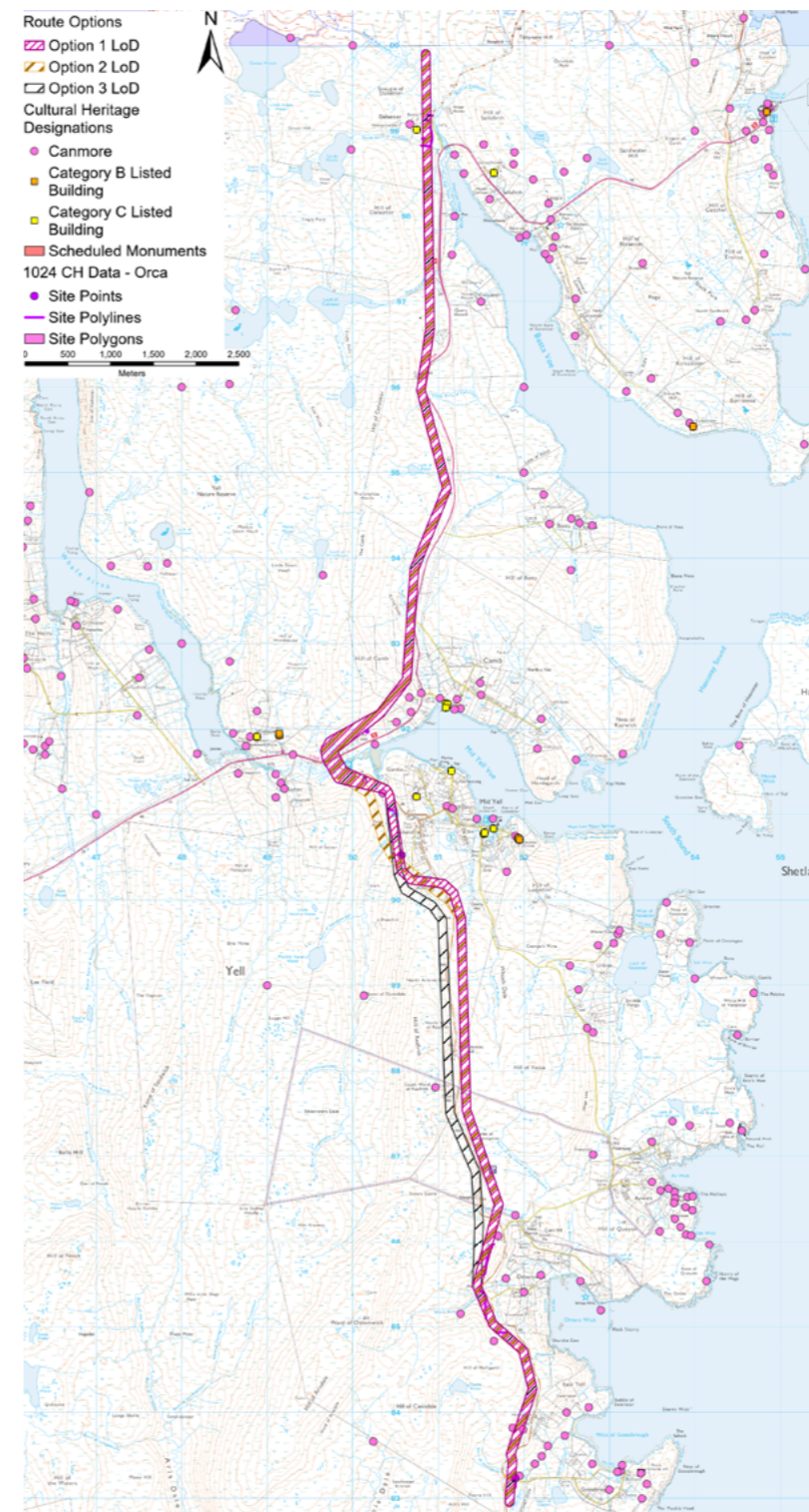


Alignment Option Constraints

Environmental Constraints



Heritage Constraints



Alignment Considerations

Environment Constraints

Landscape and visual

Option 3 provides benefits from a landscape and visual perspective. By routing the alignment to the west of the B9081, it avoids additional infrastructure within the more scenic eastward views towards Fetlar and the surrounding seascape, thereby reducing effects on receptors experiencing these higher-value views. In contrast, Options 1 and 2 would increase the prominence of overhead line infrastructure within these eastward views through co-location with the existing OHL.

Natural heritage

From an environmental perspective, Option 3 offers clearer advantages in reducing impacts on peat and habitats. Average peat depths are generally lower along key parts of the route, and the overall area of blanket bog and other important habitats affected is smaller. This means there is likely to be less impact on sensitive and difficult to replace habitats, particularly where avoiding blanket bog is a key consideration.

However, Option 3 also presents greater potential constraints in relation to designated sites and birds. The alignment overlaps with the Otterwick and Graveland Special Protection Area, Otterwick Site of Special Scientific Interest and the Yell RSPB reserve. It is also closer to known breeding locations for red-throated diver, which could increase the risk of disturbance and bird collisions.

Cultural Heritage

Recent survey work carried out along the Energy Isles section did not identify any new archaeological features, indicating that cultural heritage constraints along the three Options are limited.

Technical constraints

Infrastructure

None of the three alignment options would require major infrastructure crossings, such as railways, pipelines or existing high voltage overhead lines. Alignment Options 1 and 2 would each involve four road crossings, including one A-road and three B-road crossings, while Alignment Option 3 would involve fewer crossings overall, with one A-road and one B-road crossing.

Ground Conditions

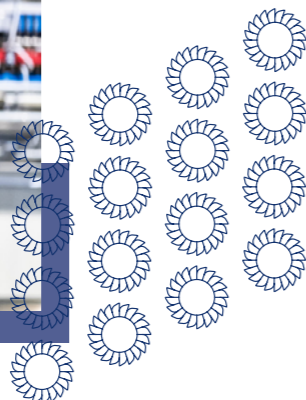
All three alignment options are expected to encounter generally moderate ground conditions, although deep peat is a key constraint across the route. Options 1 and 2 have similar terrain profiles, with average slopes of 4.8%, rolling ground, and some steeper sections. Both also pass through a greater number of areas of deeper peat, including sections where peat depth exceeds 3 metres. Option 3 has a slightly steeper average slope of 5.4%, but a smoother and more consistent terrain profile overall, with fewer changes in elevation and generally shallower peat than Options 1 and 2. However, it would still pass through some areas where peat depth exceeds 3 metres.

Construction/Maintenance

All three alignment options benefit from good access, as they remain close to existing public roads and tracks. Options 2 and 3 offer particularly good access opportunities, with Option 3 remaining within 1 km of the public road network throughout, while Option 1 would require the highest number of angle structures, which could increase construction complexity and future maintenance requirements.

Proximity

All three alignment options pass within 100 to 250 metres of some residential properties, and within 750 metres of the nearby Beaw Field and Energy Isles wind farms and communication masts. Each option also passes close to Mid Yell, which is the nearest settlement along the route.

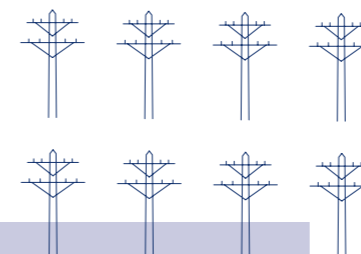
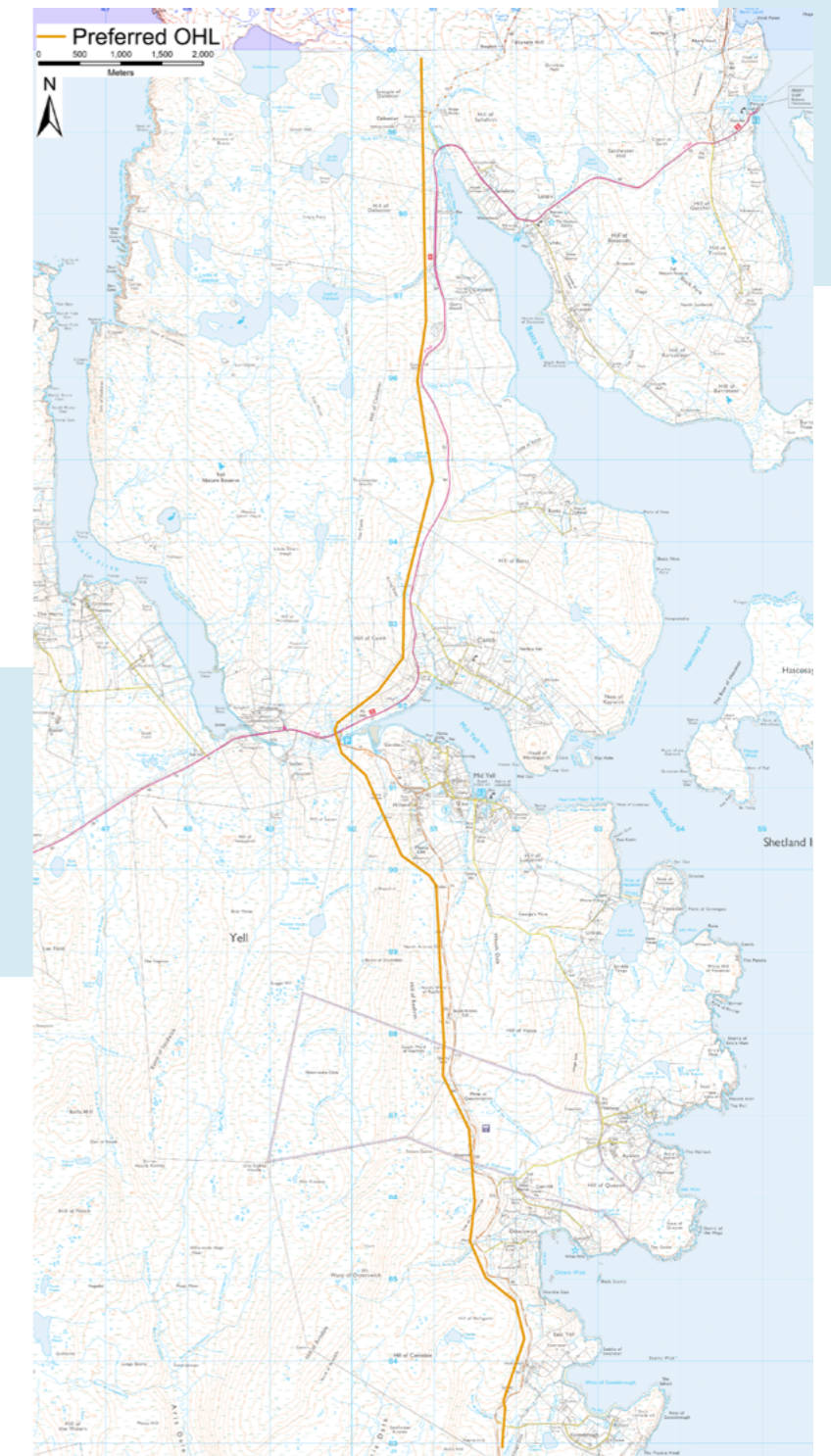


Energy isles connection preferred alignment

Proposed least constrained alignment

Option 3 is considered the least constrained alignment as it performs well overall, with no major infrastructure crossings, fewer road crossings, and a smoother and more consistent terrain than the other options. The route benefits from good access, remaining close to existing roads and tracks, and generally encounters shallower peat, which helps reduce potential construction challenges and effects on sensitive habitats. The alignment sits outside designated landscapes and avoids direct impact on nationally and internationally protected sites.

Therefore, alignment Option 3 is the option we are proposing to take forward for further design development, environmental impact assessment, and the consenting process.



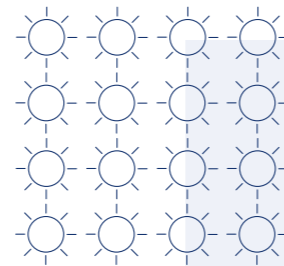
Indicative 3D visualisations

We understand that stakeholders need to be able to visualise what the development may look like in their local area. We have commissioned 3D visualisations which model the proposed overhead line into the local landscape to help understand the proposals in terms of the visual impact, distance, and height.

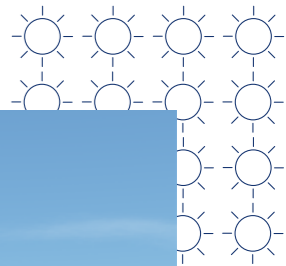
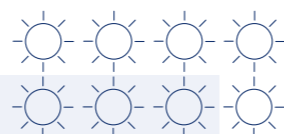
The following are some images taken from the 3D model created for the Energy Isles to proposed Yell substation 132kV OHL.

To get a better sense of the proposals in full, a visualisation portal including a flythrough video is also available to view from the project webpage and our consultants, 3D Webtech, will be assisting us at our events with copies of the model that attendees can interact with during the events.

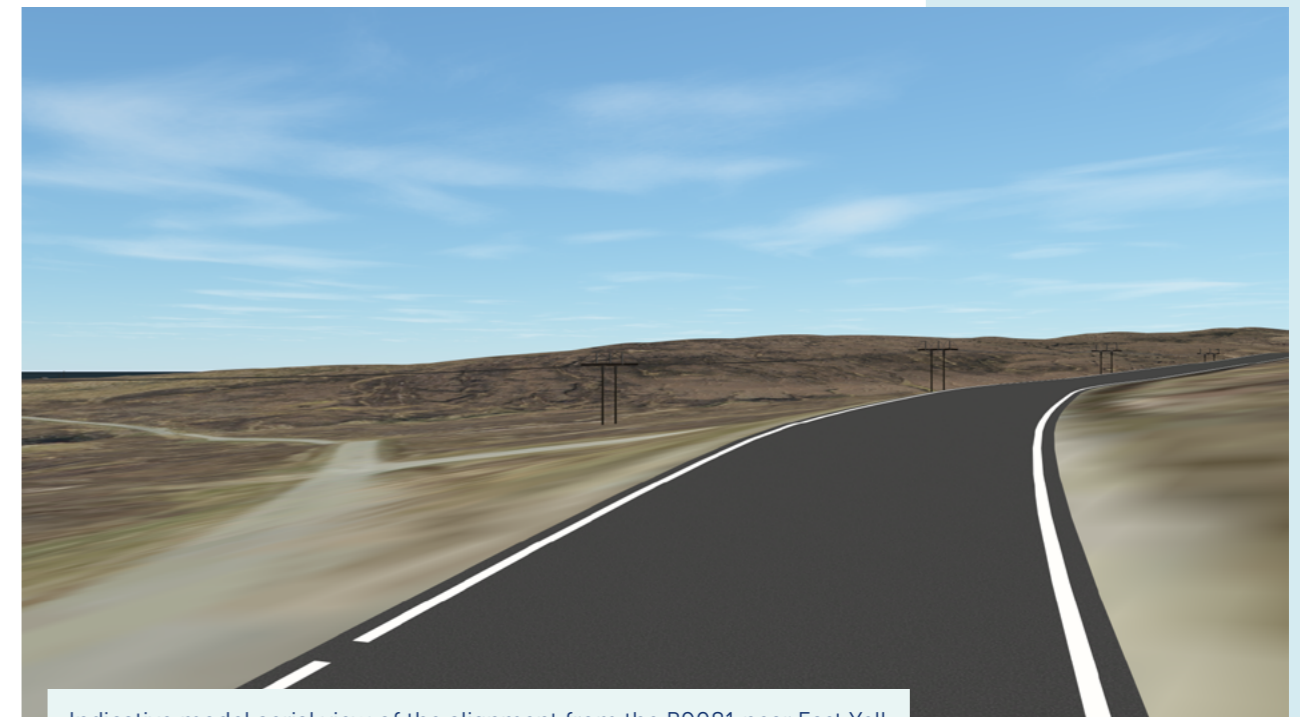
Photomontage visualisations will also be produced as part of the Environmental Impact Assessment (EIA). Once the EIA is completed and submitted as part of our Section 37 planning application, we will ensure these photomontages are available to view.



Indicative model of the 132 kV alignment from Gossabrough junction facing south.



Indicative modelled view at Hill of Dalsetter facing south west



Indicative model aerial view of the alignment from the B9081 near East Yell.

Building a lasting legacy

Our community benefit funds

Following an extensive stakeholder consultation exercise in 2023, we launched our first community benefit fund in 2024, to fund a range of community projects across the north of Scotland and the Shetland islands. These funds are open to applications from not-for-profit, constituted groups and organisations. There are two types of funds available:

Local funds

In anticipation of the expected UK government's guidance on community benefit funding, we have launched four preliminary local funds connected to projects recently completed or currently under construction. These funds will vary to reflect the differing needs, wishes and priorities of each of the local communities.

Local Community Benefit Funds are intended for local communities close to our transmission infrastructure works. We will work with those communities to design a fund that can make a positive local impact. We will work with independent panels to make funding allocation decisions, and we will support local communities to ensure best use of the funding opportunities.

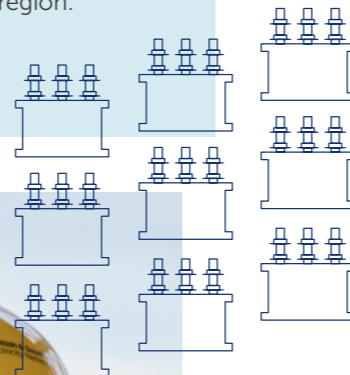
Regional funds

This fund is to be used to provide support for strategic projects in the region, and must meet one or more of the following themes:

People: Focusing on skills, training and employability;

Place: Emphasising the community and culture of the north of Scotland and the Shetland islands;

Alleviating fuel poverty: Looking at strategic ways to help people across the region.



Local impact in focus

In Shetland, community benefit funds are already being put to work. A total of **£338,625** was awarded through SSEN Transmission's new cable community fund linked to the first Shetland-Scottish mainland HVDC cable.

Shetland's allocation, being delivered via the local charity Win Furt is earmarked for community-driven infrastructure, such as footpaths and cycle routes in Tingwall, Whiteness and Weisdale, as identified through local consultation.

Indicative funding levels

UK government guidance sets out indicative levels of community benefit funding for transmission infrastructure. These figures provide a useful benchmark for the types of investment local communities should expect:

Overhead lines: £200,000 per km

Converter stations/substations: £530,000 each

Based on this guidance, the Shetland strategy projects are poised to deliver over **£2 million** in community benefit funding, helping to support tangible long-term improvements for local people in Shetland.



SSEN Transmission are committed to leaving a lasting, positive legacy within the communities we operate in. To us, this means going beyond the delivery of the infrastructure.

In Shetland, this includes supporting local initiatives through our Community Benefit funds, getting involved in volunteering and outreach efforts and working closely with local groups to understand where support is most needed.

Housing

Through our housing strategy we hope to accelerate the supply of affordable housing, because we are seeking to leave a positive legacy whilst housing our workers.

Our approach is multi-faceted, and includes looking at options to support permanent housing, the redevelopment of existing properties that require refurbishment, assessing use of underutilised, off season, hotel and rental accommodation, potential use of empty homes, potential use of existing short term lets who would wish to revert to long term rented accommodation, and temporary accommodation village options.

We have worked with the Council from the very start of our engagement, on a long list of accommodation options to ensure that this helps meet the aspirations of Shetland, and this work continues.

Economy

Through the first HVDC link we have invested tens of millions of pounds into Shetland's economy.

This included hundreds of jobs and local business opportunities. Going forward, we intend to work with our supply chain to further increase the number of local jobs and business opportunities on Shetland.

Skills

We will be taking a co-ordinated approach across all our supply chain to enable training and identify opportunities for young people and school leavers.

Our contractors' obligations will include how they can increase opportunities for local people either through training or jobs.

Our Supply Chain

At every stage of development, we carry out a competitive tender process to appoint contractors who align with our commitment to delivering positive local outcomes. The companies that we work with are expected to contribute meaningfully to the communities we serve, including here in Shetland.

Our works can bring a wide range of benefits to the local area such as employment opportunities, apprenticeships and training, as well as working with local schools and colleges to inspire the next generation.

We actively promote and encourage the use of local suppliers, services and materials to help ensure that the benefits of our projects are felt within Shetland's economy.



Delivering a positive environmental legacy

We recognise that we have significant interaction with the environment through the activities we undertake in Scotland as we seek to develop and improve the transmission network. With this work comes a legal responsibility to design and build our projects in a manner which protects the natural and built environment.

We are committed to protecting and enhancing the environment by minimising the potential impacts from our construction and operational activities on biodiversity. To this end, we have committed to no net loss of biodiversity in non irreplaceable habitats for all of our projects gaining consent from 2020 onwards, and net gain of biodiversity on all projects gaining consent from 2025. This means that during the development, construction and operation of our projects, we will leave the environment no worse than when we found it, and where possible make it even better, leaving a positive environmental legacy at all of our SSEN Transmission sites. As this project progresses through the development process, we will actively seek ways to avoid and minimise impacts on biodiversity, through careful routing design to avoid areas of highest biodiversity value, to implementing habitat restoration and improvement measures in areas within and surrounding the proposed development.

Example projects

Shetland HVDC link 1

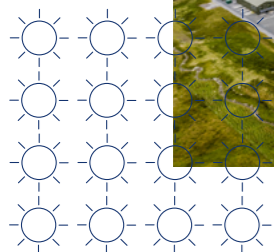
As part of our Biodiversity Net Gain (BNG) commitments, we've undertaken significant landscape and habitat creation works at both ends of our project—at the Kergord DC Converter Station in Shetland and the Noss Head Switching Station near Wick in Caithness, which were both energised in 2024.

Kergord Substation

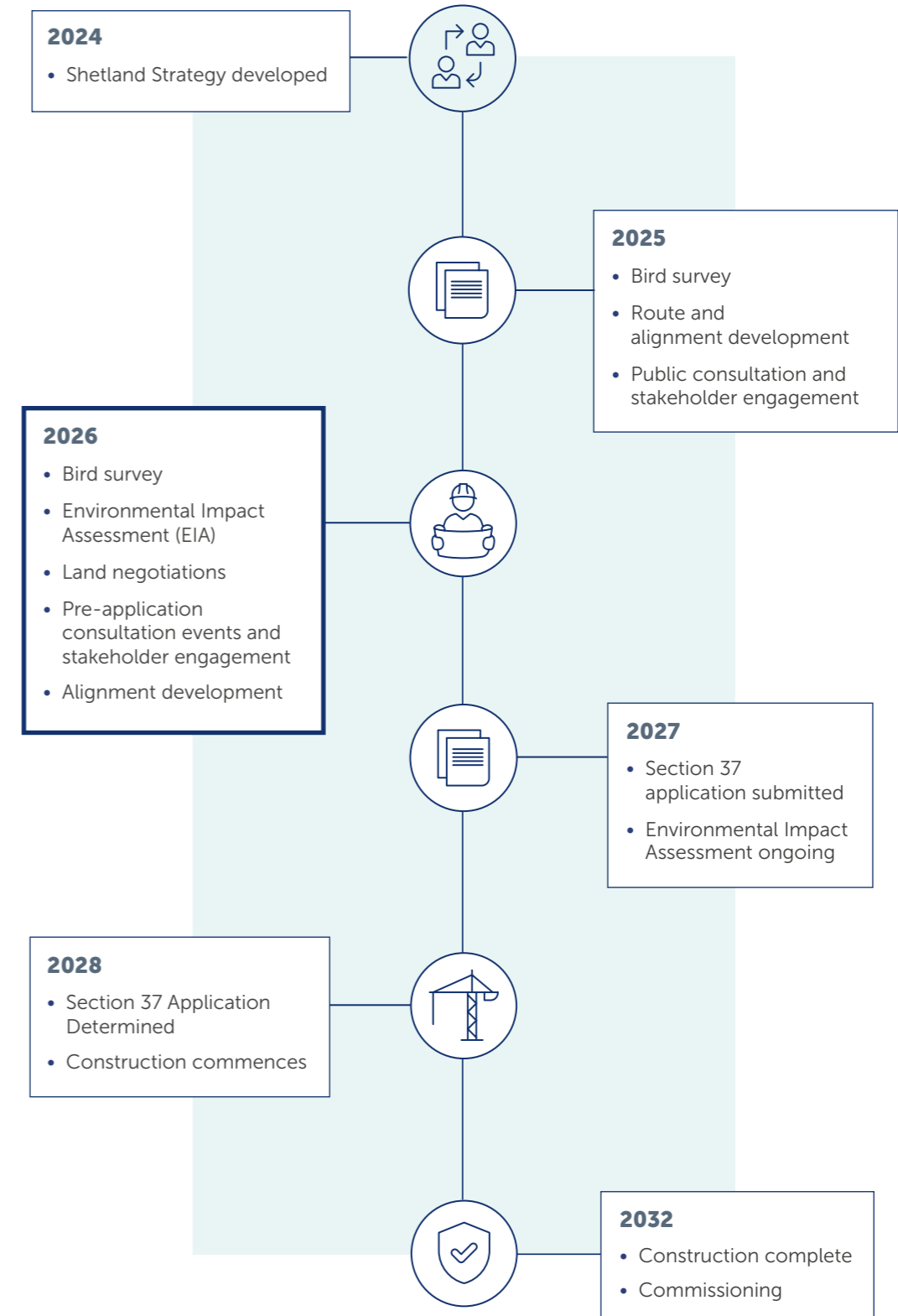
With the site located at the base of the Kergord valley, we constructed two watercourses—one at the southern end and another at the northern boundary of the site. These were designed to collect and redirect several smaller natural watercourses that previously flowed into the Burn of Weisdale. To enhance the new watercourses at Kergord, we planted native woodland species along their banks and along the eastern boundary adjacent to the Burn of Weisdale, helping to stabilise the banks and reduce erosion. Across the site, we've also planted extensive areas of woodland, woodland edge, scrub, open grassland meadow areas and created a variety of wetland habitats—including scrapes, detention basins, and a swale. These have been enriched with native wetland plugs to support Shetland's unique biodiversity.

Noss Head Switching Station

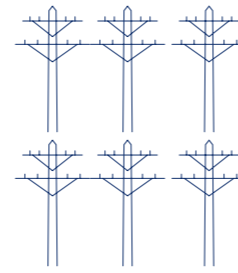
At Noss Head, the former agricultural grassland has been transformed into a diverse landscape designed to support local biodiversity. Wildflower meadows and grasslands have been planted to attract pollinators, including the rare great yellow bumblebee, which is endemic to Caithness. To further enhance ecological value and visual screening, extensive woodland and scrub habitats have been introduced around the site's landscaped bunds. A swale and detention basin have been created to help manage surface water and reduce flood risk. These areas have been planted with a coastal meadow mix.



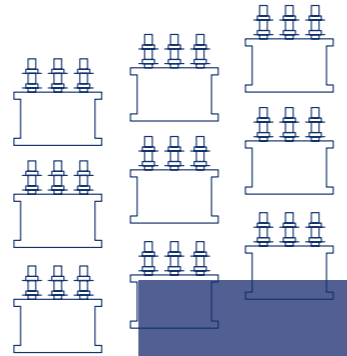
Project timeline



Our next consultation



Our next round of consultation will take place later this year. We will present the proposal that we intend to take forward for Environmental Impact Assessment (EIA) and subsequent submission to the Scottish Government's Energy Consents Unit as part of the Section 37 consenting process. This will include a detailed breakdown of the layout including structure locations, temporary and permanent access, construction compounds and associated services. Detail on where feedback from today's event has been incorporated into the refined proposals will also be covered.



Next steps

We value community and stakeholder feedback. Without this, we would be unable to progress projects and reach a balanced proposal.

The feedback period

Following our events, a consultation period will open until **21 August 2026**.

How to provide feedback

You can complete our feedback form online, using the feedback form at the back of this booklet or submit feedback in writing or email. The feedback will be analysed by the project team and a report on consultation produced and published on our website detailing our response to your feedback.

Our Community Liaison team

Each project has a dedicated Community Liaison Manager who works closely with community members to make sure they are well informed of our proposals and that their views, concerns, questions or suggestions are put to our project teams.

Throughout the life of our projects, you will hear from us regularly. We aim to establish strong working relationships by being accessible to key local stakeholders such as community councils, residents' associations and development trusts, and regularly engage with interested individuals.

What we're seeking views on

We want to know your thoughts on the alignments under consideration. We'll be actively looking to mitigate the impacts of the project as much as possible over the coming months, but it would be helpful to understand what you believe we should be doing to help minimise these impacts and if there are any opportunities to deliver a local community benefit you would like us to consider.

We encourage all interested community members to fill in a feedback form when submitting feedback, however if you prefer, you can email us to provide your feedback or ask any questions.



To support everyone online, we provide accessibility and language options on our website through 'Recite Me'. The accessibility and language support options provided by 'Recite Me' include text-to-speech functionality, fully customisable styling features, reading aids, and a translation tool with over 100 languages, including 35 text-to-speech.

Please select "Accessibility" on our website to try out our inclusive toolbar."

How To Get In Touch

SSEN Transmission, Stewart Building, Lerwick, Shetland, ZE1 0LL

shetlandengagement@sse.com

You can also follow us on social media:

@ssentransmission SSENTransmission

SSEN Transmission

Additional information:



The best way to keep up to date is to sign up to project updates via the project webpage:

ssen-transmission.co.uk/energy-isles-connection

Notes

Your feedback

Thank you for taking the time to read this consultation booklet. In order to record your views and improve the effectiveness of our consultation, please complete this short feedback form.

Please complete in BLOCK CAPITALS. (Please tick one box per question only)

Q1. Have we adequately explained the need for this project?

Yes No Unsure

Comments:

Q2. Do you feel sufficient information has been provided to enable you to understand what is being proposed and why?

Yes No Unsure

Comments:

Q3. Are you satisfied that our approach taken to select our proposed alignment has been adequately explained?

Yes No Unsure

Comments:

Q4. Do you agree with our proposed overhead line alignment, if not, why?

Yes No Unsure

Comments:

Q5. Are there any additional factors, or environmental features, that you would like to make us aware of within any of the three alignment options presented?

Yes No Unsure

Comments:

Q6. Do you have any other comments (positive or negative) in relation to the project?

Full name: **Email:**

Telephone: **Address:**

We would like to send you relevant communications via email such as invitations to stakeholder events, surveys, updates on projects, services and future developments from the Scottish and Southern Electricity Networks group listed below. If you are happy to receive email updates please opt in by ticking the box below. You can unsubscribe at any time by contacting us at stakeholder.admin@sse.com or by clicking on the unsubscribe link that will be at the end of each of our emails.

If you would like to be kept informed of progress on the project, please tick this box

Thank you for taking the time to complete this feedback form. Please submit your completed form by one of the methods below:

Post: SSEN Transmission, Stewart Building, Lerwick, Shetland, ZE1 0LL

Email: shetlandengagement@sse.com

Online: ssen-transmission.co.uk/energy-isles-connection

For information on how we collect and process your data please see our privacy notice available at today's event. This can also be obtained online at: ssen-transmission.co.uk/privacy

Comments forms and all the information from today's event will also be available to download from the project website.

We intend to use Artificial Intelligence (AI) to assist our experienced teams in the analysis of your feedback, so we can categorise key points raised more quickly. You can learn more about how we're utilising AI at: ssen-transmission.co.uk/AIFAQ

Any information given on the feedback form can be used and published anonymously as part of Scottish and Southern Electricity Networks consultation report. By completing this feedback form you consent to Scottish and Southern Electricity Networks using feedback for this purpose.

Scottish and Southern Electricity Networks is a trading name of: Scottish and Southern Energy Power Distribution Limited Registered in Scotland No. SC213459; Scottish Hydro Electric Transmission plc Registered in Scotland No. SC213461; Scottish Hydro Electric Power Distribution plc Registered in Scotland No. SC213460; (all having their Registered Offices at Inveralmond House 200 Dunkeld Road Perth PH1 3AQ); and Southern Electric Power Distribution plc Registered in England & Wales No. 04094290 having its Registered Office at Number One Forbury Place, 43 Forbury Road, Reading, Berkshire, RG1 3JH which are members of the SSE Group.





TRANSMISSION



ssen-transmission.co.uk/energy-isles-connection