



Legend

Site Boundary

Existing Towers to be Removed

Proposed 132kV Cable Route

Proposed 132kV Cable Route (HDD)

Proposed 33kV Cable Route

Proposed 33kV Cable Route (HDD)

Glen Strathfarrar SSSI/Strathglass Complex SAC

Glen Affric to Strathconon SPA

UKHab Habitat Classification

Rivers and streams - Other rivers and streams

Grassland - Bracken

Grassland - Modified grassland

Grassland - Other neutral grassland

Grassland - Upland acid grassland

Heathland and shrub - Upland heathland

Urban - Developed land; sealed surface

Figure Title

UKHab Baseline Map - RLB Site

Project Name

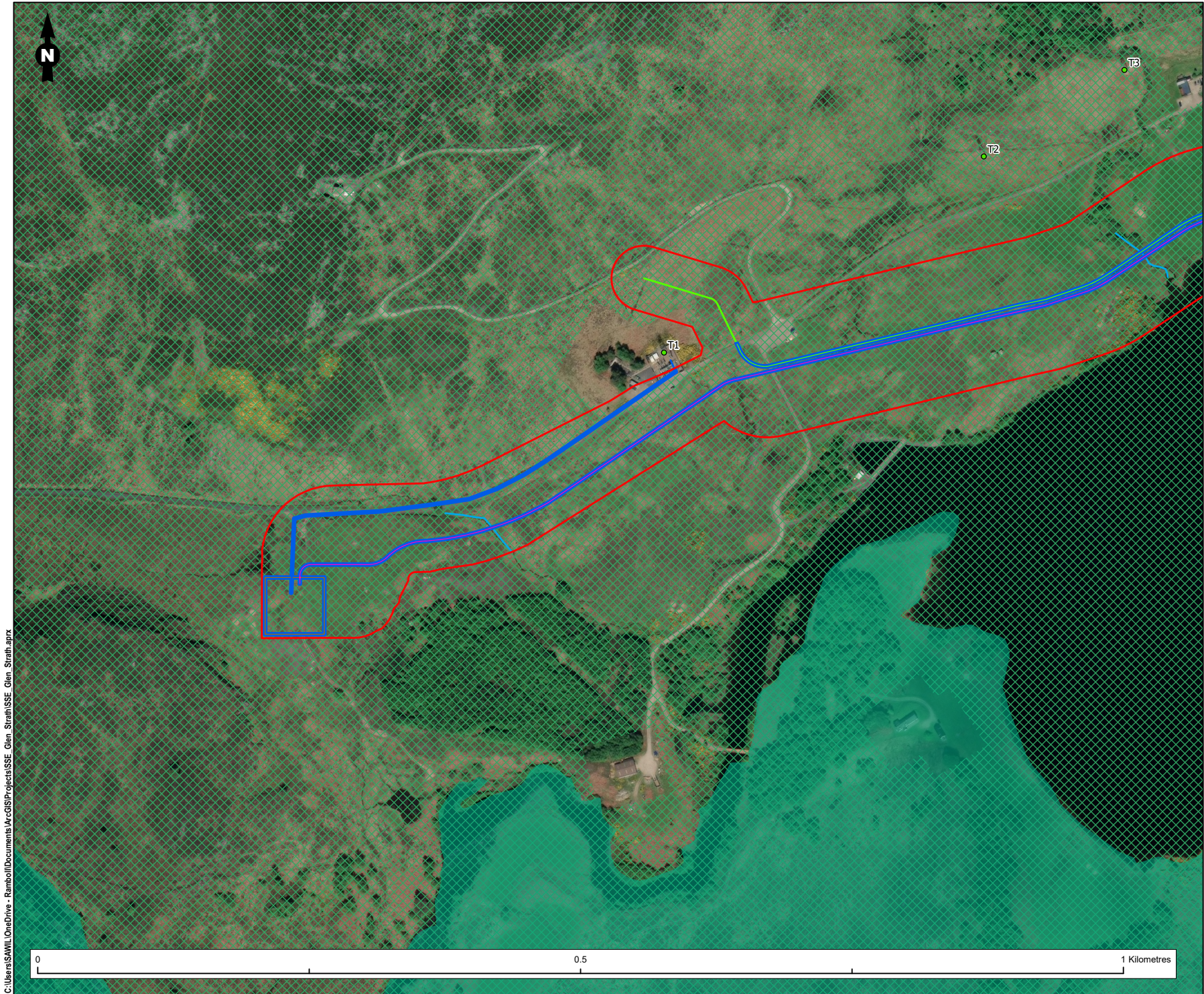
Glen Strathfarrar VISTA

Project Number <div>1620008770</div>	Figure No. <div>3.3</div>
Date <div>November 2024</div>	Prepared By <div>SW</div>
Scale <div>1:3,300 @A3</div>	Issue <div>1</div>

Client

SSEN Transmission

C:\Users\SAWILL\OneDrive - Ramboll\Documents\A\cGIS\Projects\SSE_Glen_Strath\SSE_Glen_Strath.aprx



Legend

Site Boundary

Existing Towers to be Removed

Proposed 11kV Route

Proposed 132kV Cable Route

Proposed 33kV Cable Route

Proposed Deanie Substation

Glen Strathfarrar SSSI/Strathglass Complex SAC

Glen Affric to Strathconon SPA

UKHab Habitat Classification

Rivers and streams - Other rivers and streams

Grassland - Bracken

Grassland - Modified grassland

Grassland - Other neutral grassland

Grassland - Upland acid grassland

Heathland and shrub - Mixed scrub

Heathland and shrub - Upland heathland

Urban - Bare ground

Urban - Developed land; sealed surface

Wetland - Blanket bog

Wetland - Purple moor grass and rush pastures

Figure Title

UKHab Baseline Map - RLB Site

Project Name

Glen Strathfarrar VISTA

Project Number <div>1620008770</div>	Figure No. <div>3.4</div>
Date <div>November 2024</div>	Prepared By <div>SW</div>
Scale <div>1:3,300 @A3</div>	Issue <div>1</div>

Client

SSEN Transmission

C:\Users\SAWILL\OneDrive - Ramboll\Documents\AccGIS\Projects\SSE_Glen_Strath\SSE_Glen_Strath.aprx

APPENDIX 2

IRREPLACEABLE AND NON-IRREPLACEABLE TOOLKITS



Biodiversity Project Toolkit



Scottish & Southern
Electricity Networks

Project title	LT234 Glen Strathfarrar VISTA - Section 37 Permanent Works - Irreplaceable Habitats		
Project lead	Scott Ferguson		
Project reference number	1620008615		
Toolkit lead	Sam Willis		
Toolkit approver	Alex Sharp		
Habitat classification system	UKHab	Site type	Development site
Date toolkit completed or updated	8 November 2024	Type of project	Area
Location start (grid reference)	232,476.84E 839,869.42N m	Location end (grid reference)	

Brief description of works

Ramboll was commissioned by Scottish and Southern Electricity Networks (herein referred to as 'SSEN Transmission'), operating under license as Scottish Hydro Electric Transmission Plc (herein referred to as 'SHE Transmission') to undertake a Biodiversity Net Gain (BNG) assessment for a development (herein referred to as the 'proposed development') located in Glen Strathfarrar, approximately 40 kilometres (km) west of Inverness in the Scottish Highlands.





Biodiversity Project Toolkit

Biodiversity Unit Calculation

Calculate biodiversity and linear (hedgerow (H) and watercourses (W)) units of your site by: (1) establishing the habitat; (2) identifying the condition, connectivity and strategic significance of that habitat; and; (3) entering the hectares (ha) or linear metres (m).

Before works (Baseline)										Action (During Works)								After work actions (Following Actions)										Post development				
Ref	Calculation Units (Area / Linear (H/W))	UK Habitats	Area or Length of Habitat (ha /km)	Distinctiveness <i>Band</i>	Condition <i>Rating</i>	Connectivity <i>Rating</i>	Strategic significance <i>Rating</i>	Units			Area or Length of Habitat		Biodiversity Units		Linear Units (H)		Linear Units (W)		After work action	UK Habitats	Area or Length of Habitat (ha /km)	Distinctiveness <i>Band</i>	Target Condition <i>Rating</i>	Connectivity <i>Rating</i>	Strategic significance <i>Rating</i>	Difficulty	Time to target condition (Years)	Spatial	Post development units			
								Biodiversity (Area)	Linear (H)	Linear (W)	Retained	Removed	Retained	Removed	Retained	Removed	Biodiversity (Area)	Linear (H)											Linear (W)			
Project Total								0.91	0.00	0.00	0.00	0.06	0.00	0.01	0.00	0.00	0.00	0.00	Project Total								0.00	0.00	0.00			
1	Urban_Area	Urban - Shallow bog	0.05	High	Moderate	Moderate	High	0.05			0.05	0.05	0.05	0.05					Creation	Urban - Developed land, sealed surface	0.05	Very Low	N/A - No biodiversity edge	Low	Low	Low	Low	0		0.05		
								TBC	TBC	TBC	TBC	TBC	TBC	TBC	TBC	TBC	TBC	TBC											TBC	TBC	TBC	
								TBC	TBC	TBC	TBC	TBC	TBC	TBC	TBC	TBC	TBC	TBC											TBC	TBC	TBC	
								TBC	TBC	TBC	TBC	TBC	TBC	TBC	TBC	TBC	TBC	TBC											TBC	TBC	TBC	
								TBC	TBC	TBC	TBC	TBC	TBC	TBC	TBC	TBC	TBC	TBC											TBC	TBC	TBC	

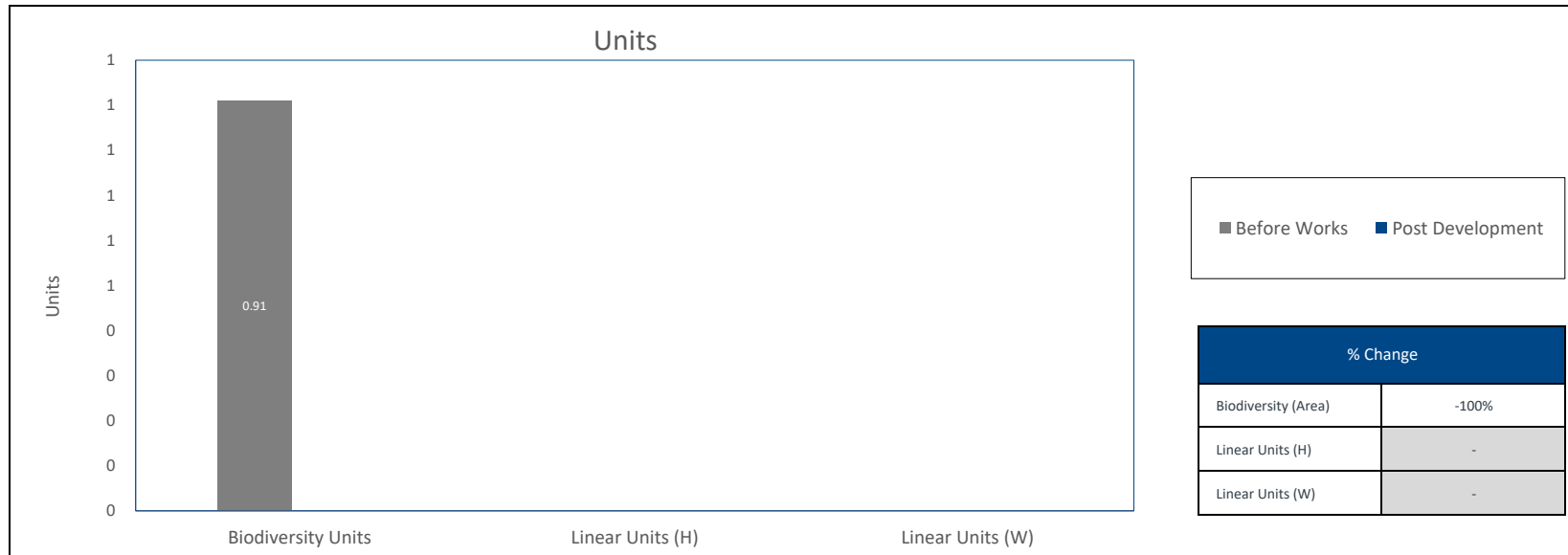


Biodiversity Project Toolkit



Summary outputs

Review the automatically updated biodiversity unit and linear habitat (hedgerow (H) and water courses (W)) results graphs to help the optioneering process and site selection.



Before Works	Units
Biodiversity (Area)	0.91
Linear Units (H)	0.00
Linear Units (W)	0.00

Post Development	Units
Biodiversity (Area)	0.00
Linear Units (H)	0.00
Linear Units (W)	0.00

Net Change	Units
Biodiversity (Area)	-0.91
Linear Units (H)	0.00
Linear Units (W)	0.00





Biodiversity Project Toolkit



Scottish & Southern
Electricity Networks

Project title	LT234 Glen Strathfarrar VISTA - Section 37 Permanent Works - Non-Irreplaceable Habitats		
Project lead	Scott Ferguson		
Project reference number	1620008615		
Toolkit lead	Sam Willis		
Toolkit approver	Alex Sharp		
Habitat classification system	UKHab	Site type	Development site
Date toolkit completed or updated	8 November 2024	Type of project	Area
Location start (grid reference)	232,476.84E 839,869.42N m	Location end (grid reference)	

Brief description of works

Ramboll was commissioned by Scottish and Southern Electricity Networks (herein referred to as 'SSEN Transmission'), operating under license as Scottish Hydro Electric Transmission Plc (herein referred to as 'SHE Transmission') to undertake a Biodiversity Net Gain (BNG) assessment for a development (herein referred to as the 'proposed development') located in Glen Strathfarrar, approximately 40 kilometres (km) west of Inverness in the Scottish Highlands.





Biodiversity Project Toolkit

Biodiversity Unit Calculation

Calculate biodiversity and linear (hedgerow (H) and watercourses (W)) units of your site by (1) establishing the habitat, (2) identifying the condition, connectivity and strategic significance of that habitat, and; (3) entering the hectares (ha) or linear metres (m).

Before works (Baseline)										
Ref	Calculation Units (Area / Linear (H/W))	UK Habitats	Area or Length of Habitat (ha /km)	Distinctiveness Band	Condition Rating	Connectivity Rating	Strategic significance Rating	Units		
								Biodiversity (Area)	Linear (H)	Linear (W)
Project Total								20.99	0.00	0.00
1	UW001_Area	Grassland - upland and grassland	0.05	High	Good	Moderate	Medium	3.48		
2	UW001_Area	Heathland and shrub - upland heathland	0.03	High	Good	Moderate	High	0.08		
3	UW001_Area	Heathland and shrub - upland heathland	0.08	High	Moderate	Moderate	High	1.21		
4								TBC	TBC	TBC
5	UW001_Area	Grassland - Broadleaved	0.01	Medium	Good	Low	Low	0.11		
6	UW001_Area	Heathland and shrub - upland heathland	0.02	High	Good	Moderate	High	0.46		
7	UW001_Area	Grassland - upland and grassland	0.03	High	Good	Moderate	Medium	2.18		
8								TBC	TBC	TBC
9	UW001_Area	Heathland and shrub - Mixed scrub	0.02	Low	Poor	Low	Low	0.04		
10	UW001_Area	Heathland and shrub - Mixed scrub	0.02	Low	Good	Low	Low	0.12		
11	UW001_Area	Heathland and shrub - upland heathland	0.61	High	Moderate	Moderate	High	11.45		
12	UW001_Area	Woodland and forest - Lowland mixed deciduous woodland	0.02	Medium	Moderate	Low	High	0.18		
13	UW001_Area	Heathland and shrub - Gorse scrub	0.03	Low	Poor	Low	Low	0.05		
14								TBC	TBC	TBC
15								TBC	TBC	TBC

Action (During Works)							
Area or Length of Habitat		Biodiversity Units		Linear Units (H)		Linear Units (W)	
Retained	Removed	Retained	Removed	Retained	Removed	Retained	Removed
0.00	1.11	0.00	20.99	0.00	0.00	0.00	0.00
0.05	0.16	0.00	0.46	-	-	-	-
0.05	0.03	0.00	0.46	-	-	-	-
0.05	0.08	0.00	1.11	-	-	-	-
	TBC	TBC	TBC	TBC	TBC	TBC	TBC
0.00	0.01	0.00	0.11	-	-	-	-
0.00	0.03	0.00	0.46	-	-	-	-
0.00	0.10	0.00	2.18	-	-	-	-
	TBC	TBC	TBC	TBC	TBC	TBC	TBC
0.00	0.02	0.00	0.04	-	-	-	-
0.00	0.02	0.00	0.11	-	-	-	-
0.00	0.02	0.00	11.45	-	-	-	-
0.00	0.02	0.00	0.18	-	-	-	-
0.00	0.03	0.00	0.05	-	-	-	-
	TBC	TBC	TBC	TBC	TBC	TBC	TBC
	TBC	TBC	TBC	TBC	TBC	TBC	TBC

After work actions (Following Actions)										Post development		
After work action	UK Habitats	Area or Length of Habitat (ha /km)	Distinctiveness	Target Condition	Connectivity	Strategic significance	Difficulty	Time to target condition (Years)	Spatial	Post development units		
										Biodiversity (Area)	Linear (H)	Linear (W)
Project Total										4.14	0.00	0.00
Creation	Urban - Developed land; sealed surface	0.01	Very Low	N/A - No biodiversity value	Low	Low	Low	0		0.00	-	-
Creation	Urban - Developed land; sealed surface	0.03	Very Low	N/A - No biodiversity value	Low	Low	Low	0		0.00	-	-
Creation	Urban - Developed land; sealed surface	0.06	Very Low	N/A - No biodiversity value	Low	Low	Low	0		0.00	-	-
										TBC	TBC	TBC
Creation	Urban - Developed land; sealed surface	0.01	Very Low	N/A - No biodiversity value	Low	Low	Low	0		0.00	-	-
Creation	Urban - Developed land; sealed surface	0.02	Very Low	N/A - No biodiversity value	Low	Low	Low	0		0.00	-	-
Creation	Urban - Developed land; sealed surface	0.03	Very Low	N/A - No biodiversity value	Low	Low	Low	0		0.00	-	-
										TBC	TBC	TBC
Creation	Heathland and shrub - Mixed scrub	0.02	Low	Poor	Low	Low	Low	2		0.04	-	-
Creation	Heathland and shrub - Mixed scrub	0.02	Low	Good	Low	Low	Low	11		0.08	-	-
Creation	Heathland and shrub - Upland heathland	0.02	High	Moderate	Moderate	High	Medium	21		1.04	-	-
Creation	Woodland and forest - Lowland mixed deciduous woodland	0.02	Medium	Moderate	Low	High	High	32+		0.02	-	-
Creation	Heathland and shrub - Gorse scrub	0.03	Low	Poor	Low	Low	Low	2		0.05	-	-
										TBC	TBC	TBC
										TBC	TBC	TBC

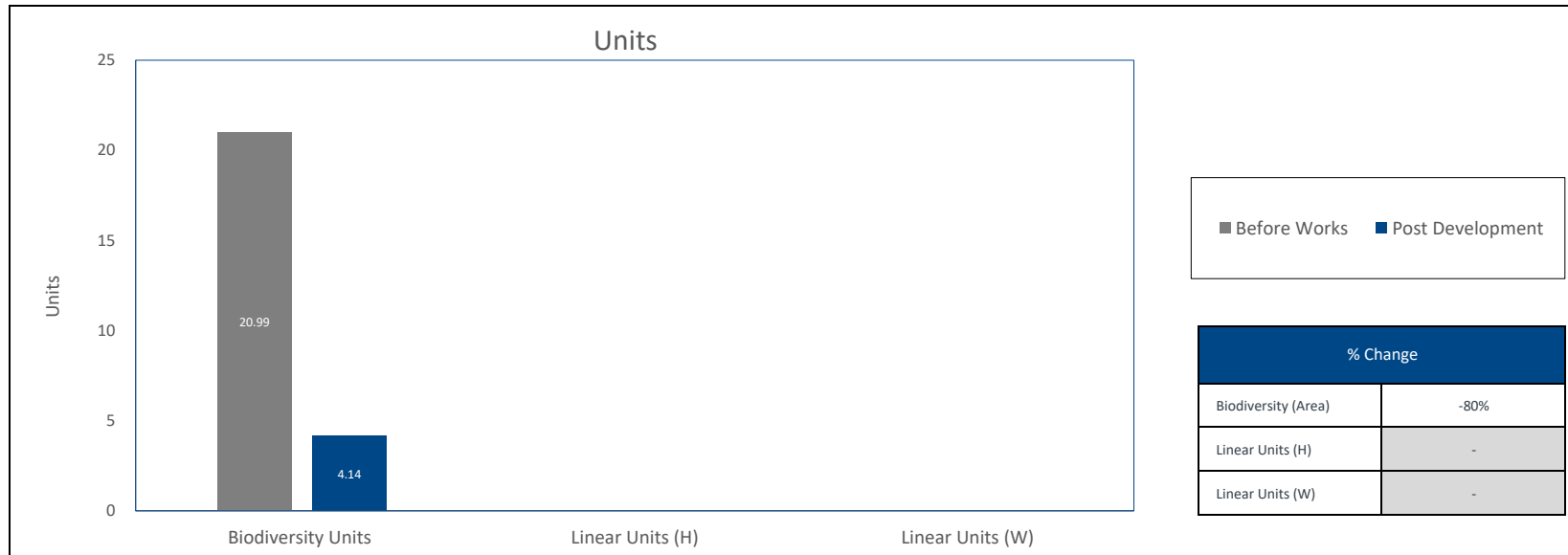


Biodiversity Project Toolkit



Summary outputs

Review the automatically updated biodiversity unit and linear habitat (hedgerow (H) and water courses (W)) results graphs to help the optioneering process and site selection.



■ Before Works	■ Post Development
----------------	--------------------

% Change	
Biodiversity (Area)	-80%
Linear Units (H)	-
Linear Units (W)	-

Before Works	Units
Biodiversity (Area)	20.99
Linear Units (H)	0.00
Linear Units (W)	0.00

Post Development	Units
Biodiversity (Area)	4.14
Linear Units (H)	0.00
Linear Units (W)	0.00

Net Change	Units
Biodiversity (Area)	-16.85
Linear Units (H)	0.00
Linear Units (W)	0.00





Biodiversity Project Toolkit



Scottish & Southern
Electricity Networks

Project title	LT234 Glen Strathfarrar VISTA - Permitted Development Temporary Works - Irreplaceable Habitats		
Project lead	Scott Ferguson		
Project reference number	1620008615		
Toolkit lead	Sam Willis		
Toolkit approver	Alex Sharp		
Habitat classification system	UKHab	Site type	Development site
Date toolkit completed or updated	8 November 2024	Type of project	Area
Location start (grid reference)	232,476.84E 839,869.42N m	Location end (grid reference)	

Brief description of works

Ramboll was commissioned by Scottish and Southern Electricity Networks (herein referred to as 'SSEN Transmission'), operating under license as Scottish Hydro Electric Transmission Plc (herein referred to as 'SHE Transmission') to undertake a Biodiversity Net Gain (BNG) assessment for a development (herein referred to as the 'proposed development') located in Glen Strathfarrar, approximately 40 kilometres (km) west of Inverness in the Scottish Highlands.





Biodiversity Project Toolkit

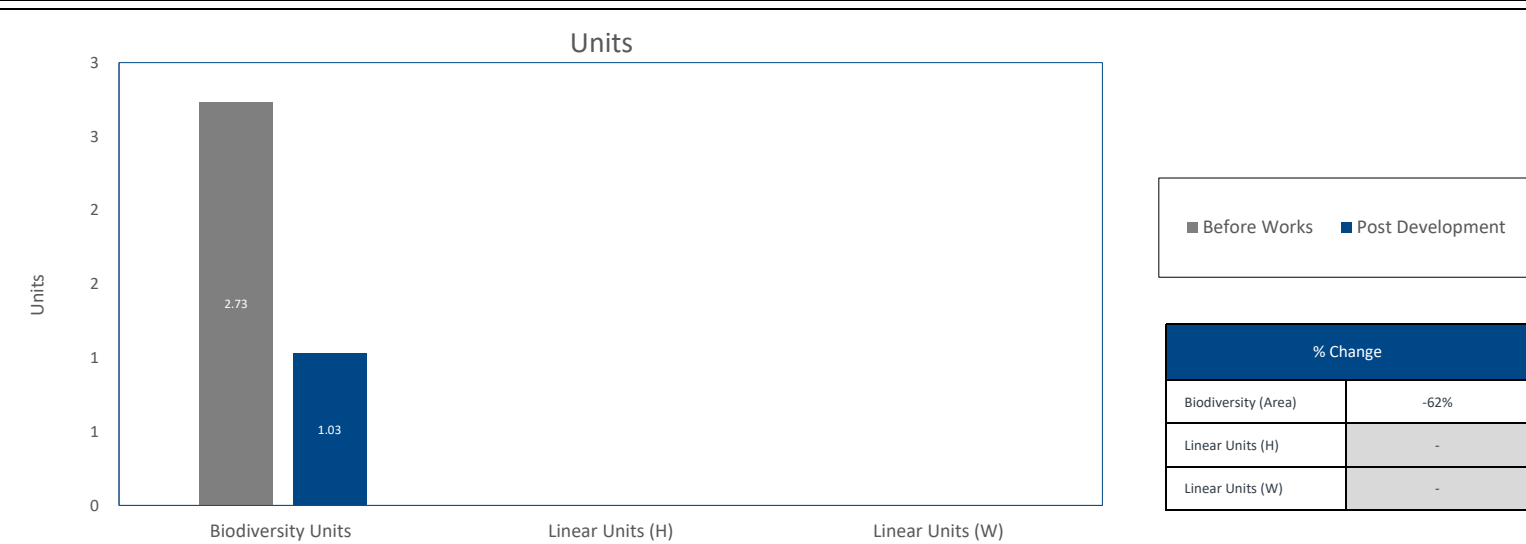
Biodiversity Unit Calculation																																
Calculate biodiversity and linear (hedgerow (H) and watercourses (W)) units of your site by: (1) establishing the habitat; (2) identifying the condition, connectivity and strategic significance of that habitat; and; (3) entering the hectares (ha) or linear metres (m).																																
Before works (Baseline)										Action (During Works)								After work actions (Following Actions)										Post development				
Ref	Calculation Units (Area / Linear (H/W))	UK Habitats	Area or Length of Habitat (ha /km)	Distinctiveness Band	Condition Rating	Connectivity Rating	Strategic significance Rating	Units			Area or Length of Habitat		Biodiversity Units		Linear Units (H)		Linear Units (W)		After work action	UK Habitats	Area or Length of Habitat (ha /km)	Distinctiveness Band	Target Condition Rating	Connectivity Rating	Strategic significance Rating	Difficulty	Time to target condition (Years)	Spatial	Post development units			
								Biodiversity (Area)	Linear (H)	Linear (W)	Retained	Removed	Retained	Removed	Retained	Removed	Retained	Removed											Biodiversity (Area)	Linear (H)	Linear (W)	
Project Total									2.73	0.00	0.00	0.00	0.12	0.00	2.73	0.00	0.00	0.00	0.00	Project Total									1.03	0.00	0.00	
1	Wetland Area	Wetland - Shrubland bog	0.12	High	Good	Moderate	High	2.73			0.00	0.12	0.00	2.73						Creation	Wetland - Shrubland bog	0.12	High	Moderate	Moderate	High	Low	10		1.03		
2								TBC	TBC	TBC	TBC	TBC	TBC	TBC	TBC	TBC	TBC	TBC											TBC	TBC	TBC	
3								TBC	TBC	TBC	TBC	TBC	TBC	TBC	TBC	TBC	TBC	TBC											TBC	TBC	TBC	



Biodiversity Project Toolkit

Summary outputs

Review the automatically updated biodiversity unit and linear habitat (hedgerow (H) and water courses (W)) results graphs to help the optioneering process and site selection.



Before Works	Units
Biodiversity (Area)	2.73
Linear Units (H)	0.00
Linear Units (W)	0.00

Post Development	Units
Biodiversity (Area)	1.03
Linear Units (H)	0.00
Linear Units (W)	0.00

Net Change	Units
Biodiversity (Area)	-1.70
Linear Units (H)	0.00
Linear Units (W)	0.00



Biodiversity Project Toolkit



Scottish & Southern
Electricity Networks

Project title	LT234 Glen Strathfarrar VISTA - Permitted Development Temporary Works - Non-Irreplaceable Habitats		
Project lead	Scott Ferguson		
Project reference number	1620008615		
Toolkit lead	Sam Willis		
Toolkit approver	Alex Sharp		
Habitat classification system	UKHab	Site type	Development site
Date toolkit completed or updated	8 November 2024	Type of project	Area
Location start (grid reference)	232,476.84E 839,869.42N m	Location end (grid reference)	

Brief description of works

Ramboll was commissioned by Scottish and Southern Electricity Networks (herein referred to as 'SSEN Transmission'), operating under license as Scottish Hydro Electric Transmission Plc (herein referred to as 'SHE Transmission') to undertake a Biodiversity Net Gain (BNG) assessment for a development (herein referred to as the 'proposed development') located in Glen Strathfarrar, approximately 40 kilometres (km) west of Inverness in the Scottish Highlands.





Biodiversity Project Toolkit

Biodiversity Unit Calculation																																									
Calculate biodiversity and linear (hedgerow (H) and watercourses (W)) units of your site by (1) establishing the habitat, (2) identifying the condition, connectivity and strategic significance of that habitat, and, (3) entering the hectares (ha) or linear metres (m).																																									
Before works (Baseline)														Action (During Works)														After work actions (Following Actions)										Post development			
Ref	Calculation Units (Area / Linear (H/W))	UK Habitats	Area or Length of Habitat (ha /km)	Distinctiveness	Condition	Connectivity	Strategic significance	Units			Area or Length of Habitat		Biodiversity Units		Linear Units (H)		Linear Units (W)		After work action	UK Habitats	Area or Length of Habitat (ha /km)	Distinctiveness	Target Condition	Connectivity	Strategic significance	Difficulty	Time to target condition (Years)	Spatial	Post development units												
								Biodiversity (Area)	Linear (H)	Linear (W)	Retained	Removed	Retained	Removed	Retained	Removed	Retained	Removed											Biodiversity (Area)	Linear (H)	Linear (W)										
Project Total								25.72	0.00	0.00	0.00	1.35	0.00	25.72	0.00	0.00	0.00	0.00	Project Total								8.84	0.00	0.00												
1	UK00b_Area	Grassland - Bracken	0.04	Medium	Good	Low	Low	0.68	-	-	0.00	0.04	0.00	0.68	-	-	-	-	Creation	Grassland - Bracken	0.04	Medium	Good	Low	Low	Low	Low	6	-	0.59	-	-									
2	UK00b_Area	Grassland - Bracken	0.19	Medium	Moderate	Low	Low	1.12	-	-	0.00	0.19	0.00	1.12	-	-	-	-	Creation	Grassland - Bracken	0.19	Medium	Moderate	Low	Low	Low	Low	6	-	1.12	-	-									
3	UK00b_Area	Grassland - Other neutral grassland	0.06	High	Moderate	Moderate	Medium	0.87	-	-	0.00	0.06	0.00	0.87	-	-	-	-	Creation	Grassland - Other neutral grassland	0.06	High	Moderate	Moderate	Medium	Low	Low	6	-	0.75	-	-									
4	UK00b_Area	Grassland - Upland acid grassland	0.11	High	Good	Moderate	Medium	2.40	-	-	0.00	0.11	0.00	2.40	-	-	-	-	Creation	Grassland - Upland acid grassland	0.11	High	Good	Moderate	Moderate	Medium	Low	16	-	1.36	-	-									
5	UK00b_Area	Grassland - Upland acid grassland	0.09	High	Moderate	Moderate	Medium	0.87	-	-	0.00	0.09	0.00	0.87	-	-	-	-	Creation	Grassland - Upland acid grassland	0.09	High	Moderate	Moderate	Medium	Low	11	-	0.59	-	-										
6	UK00b_Area	Heathland and shrub - Upland heathland	0.80	High	Good	Moderate	High	18.22	-	-	0.00	0.80	0.00	18.22	-	-	-	-	Creation	Heathland and shrub - Upland heathland	0.80	High	Good	Moderate	Moderate	High	Medium	11	-	4.04	-	-									
7	UK00b_Area	Heathland and shrub - Upland heathland	0.05	High	Moderate	Moderate	High	0.76	-	-	0.00	0.05	0.00	0.76	-	-	-	-	Creation	Heathland and shrub - Upland heathland	0.05	High	Moderate	Moderate	High	Medium	21	-	0.24	-	-										
8	UK00b_Area	Biers and lakes - Scrubby standing waters	0.03	High	Moderate	Moderate	High	0.15	-	-	0.00	0.03	0.00	0.15	-	-	-	-	Creation	Biers and lakes - Scrubby standing waters	0.03	High	Moderate	Moderate	High	Low	4	-	0.14	-	-										
9	UK00b_Area	Wetland - Purple moor grass and rush pastures	0.03	High	Moderate	Moderate	High	0.46	-	-	0.00	0.03	0.00	0.46	-	-	-	-	Creation	Wetland - Purple moor grass and rush pastures	0.03	High	Moderate	Moderate	High	High	21	-	0.07	-	-										
10								TBC	TBC	TBC	TBC	TBC	TBC	TBC	TBC	TBC	TBC	TBC													TBC	TBC	TBC								

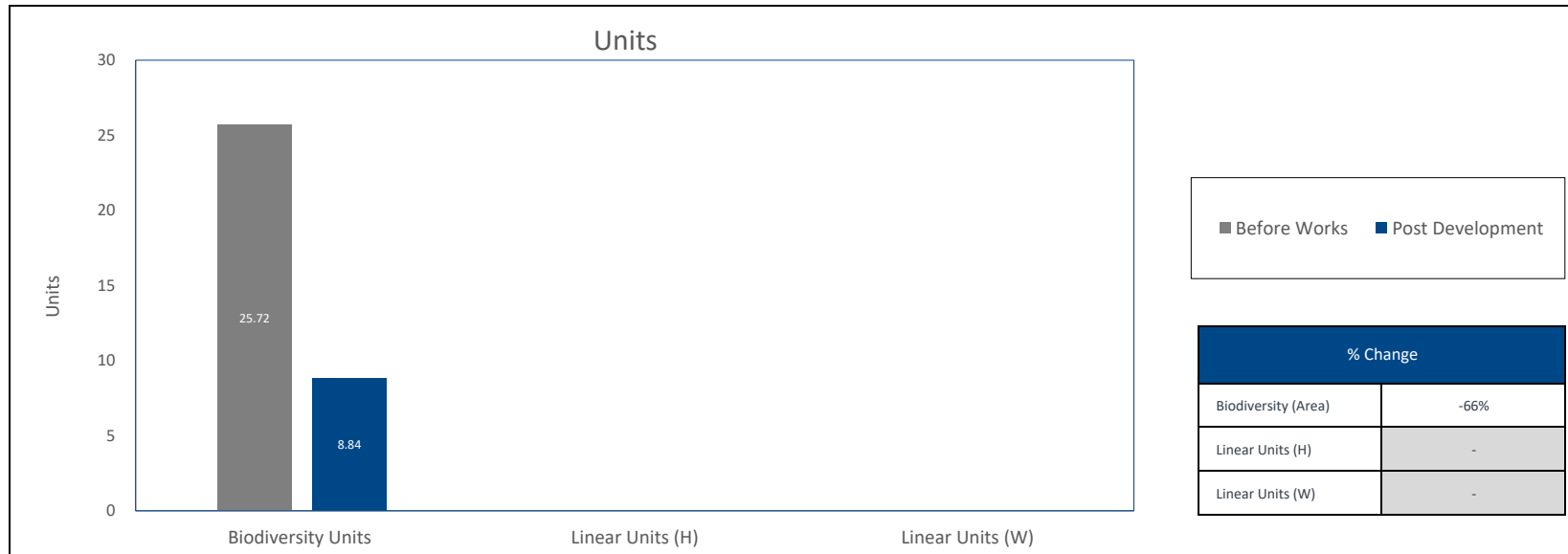


Biodiversity Project Toolkit



Summary outputs

Review the automatically updated biodiversity unit and linear habitat (hedgerow (H) and water courses (W)) results graphs to help the optioneering process and site selection.



Before Works	Units
Biodiversity (Area)	25.72
Linear Units (H)	0.00
Linear Units (W)	0.00

Post Development	Units
Biodiversity (Area)	8.84
Linear Units (H)	0.00
Linear Units (W)	0.00

Net Change	Units
Biodiversity (Area)	-16.88
Linear Units (H)	0.00
Linear Units (W)	0.00

APPENDIX 3 RETAINED HABITATS TOOLKIT



Biodiversity Project Toolkit



Scottish & Southern
Electricity Networks

Project title	LT234 Glen Strathfarrar VISTA - Retained Habitats - Irreplaceable		
Project lead	Scott Ferguson		
Project reference number	1620008615		
Toolkit lead	Sam Willis		
Toolkit approver	Alex Sharp		
Habitat classification system	UKHab	Site type	Development site
Date toolkit completed or updated	8 November 2024	Type of project	Area
Location start (grid reference)	232,476.84E 839,869.42N m	Location end (grid reference)	

Brief description of works

Ramboll was commissioned by Scottish and Southern Electricity Networks (herein referred to as 'SSEN Transmission'), operating under license as Scottish Hydro Electric Transmission Plc (herein referred to as 'SHE Transmission') to undertake a Biodiversity Net Gain (BNG) assessment for a development (herein referred to as the 'proposed development') located in Glen Strathfarrar, approximately 40 kilometres (km) west of Inverness in the Scottish Highlands.





Biodiversity Project Toolkit

Biodiversity Unit Calculation

Calculate biodiversity and linear (hedgerow (H) and watercourses (W)) units of your site by: (1) establishing the habitat; (2) identifying the condition, connectivity and strategic significance of that habitat, and; (3) entering the hectares (ha) or linear metres (m).

Before works (Baseline)												
Ref	Calculation Units	UK Habitats	Area or Length of Habitat	Distinctiveness	Condition	Connectivity	Strategic significance	Units			Area or Length of Habitat	
	(Area / Linear (H/W))		(ha /km)	Band	Rating	Rating	Rating	Biodiversity (Area)	Linear (H)	Linear (W)	Retained	Removed
Project Total								131.46	0.00	0.00	6.75	0.00
1	UKHab_Area	Wetland - Blanket bog	0.89	High	Good	Moderate	High	20.27	-	-	0.89	0.00
2	UKHab_Area	Wetland - Blanket bog	0.10	High	Moderate	Moderate	High	1.52	-	-	0.10	0.00
3	UKHab_Area	Wetland - Blanket bog	2.93	High	Good	Moderate	High	66.72	-	-	2.93	0.00
4	UKHab_Area	Wetland - Blanket bog	2.83	High	Moderate	Moderate	High	42.96	-	-	2.83	0.00
5								TBC	TBC	TBC		TBC

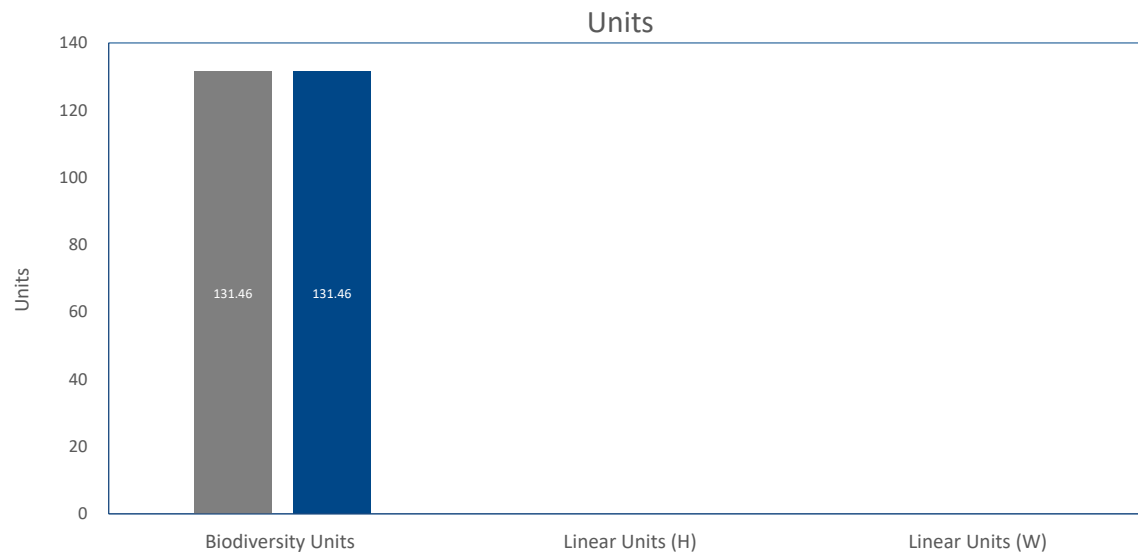


Biodiversity Project Toolkit



Summary outputs

Review the automatically updated biodiversity unit and linear habitat (hedgerow (H) and water courses (W)) results graphs to help the optioneering process and site selection.



■ Before Works ■ Post Development

% Change	
Biodiversity (Area)	0%
Linear Units (H)	-
Linear Units (W)	-

Before Works	Units
Biodiversity (Area)	131.46
Linear Units (H)	0.00
Linear Units (W)	0.00

Post Development	Units
Biodiversity (Area)	131.46
Linear Units (H)	0.00
Linear Units (W)	0.00

Net Change	Units
Biodiversity (Area)	0.00
Linear Units (H)	0.00
Linear Units (W)	0.00





Biodiversity Project Toolkit



Scottish & Southern
Electricity Networks

Project title	LT234 Glen Strathfarrar VISTA - Retained Habitats - Non-Irreplaceable		
Project lead	Scott Ferguson		
Project reference number	1620008615		
Toolkit lead	Sam Willis		
Toolkit approver	Alex Sharp		
Habitat classification system	UKHab	Site type	Development site
Date toolkit completed or updated	8 November 2024	Type of project	Area
Location start (grid reference)	232,476.84E 839,869.42N m	Location end (grid reference)	
Brief description of works			
Ramboll was commissioned by Scottish and Southern Electricity Networks (herein referred to as 'SSEN Transmission'), operating under license as Scottish Hydro Electric Transmission Plc (herein referred to as 'SHE Transmission') to undertake a Biodiversity Net Gain (BNG) assessment for a development (herein referred to as the 'proposed development') located in Glen Strathfarrar, approximately 40 kilometres (km) west of Inverness in the Scottish Highlands.			





Biodiversity Project Toolkit

Biodiversity Unit Calculation

Calculate biodiversity and linear (hedgerow (H) and watercourses (W)) units of your site by: (1) establishing the habitat; (2) identifying the condition, connectivity and strategic significance of that habitat, and; (3) entering the hectares (ha) or linear metres (m).

Before works (Baseline)												
Ref	Calculation Units	UK Habitats	Area or Length of Habitat	Distinctiveness	Condition	Connectivity	Strategic significance	Units			Area or Length of Habitat	
	(Area / Linear (H/W))		(ha /km)	Band	Rating	Rating	Rating	Biodiversity (Area)	Linear (H)	Linear (W)	Retained	Removed
Project Total								887.26	0.00	0.00	57.61	0.00
1	UKHab_Area	Grassland - Bracken	1.58	Medium	Good	Low	Low	18.96	-	-	1.58	0.00
2	UKHab_Area	Grassland - Bracken	3.09	Medium	Moderate	Low	Low	24.72	-	-	3.09	0.00
3	UKHab_Area	Grassland - Bracken	0.09	Medium	Poor	Low	Low	0.36	-	-	0.09	0.00
4	UKHab_Area	Grassland - Modified grassland	3.63	Low	Poor	Low	Low	7.26	-	-	3.63	0.00
5	UKHab_Area	Grassland - Other neutral grassland	0.93	High	Moderate	Moderate	Medium	13.50	-	-	0.93	0.00
6	UKHab_Area	Grassland - Upland acid grassland	1.76	High	Good	Moderate	Medium	38.33	-	-	1.76	0.00
7	UKHab_Area	Grassland - Upland acid grassland	0.61	High	Moderate	Moderate	Medium	8.86	-	-	0.61	0.00
8	UKHab_Area	Grassland - Upland acid grassland	0.08	High	Poor	Moderate	Medium	0.58	-	-	0.08	0.00
9	UKHab_Area	Heathland and shrub - Mixed scrub	0.02	Low	Good	Low	Low	0.12	-	-	0.02	0.00
10	UKHab_Area	Heathland and shrub - Mixed scrub	0.04	Low	Moderate	Low	Low	0.16	-	-	0.04	0.00
11	UKHab_Area	Heathland and shrub - Mixed scrub	0.10	Low	Poor	Low	Low	0.20	-	-	0.10	0.00
12	UKHab_Area	Heathland and shrub - Upland Heathland	15.72	High	Good	Moderate	High	357.94	-	-	15.72	0.00
13	UKHab_Area	Heathland and shrub - Upland Heathland	5.80	High	Moderate	Moderate	High	88.04	-	-	5.80	0.00
14	UKHab_Area	Rivers and Lakes - Eutrophic standing waters	0.24	High	Moderate	Moderate	High	3.64	-	-	0.24	0.00
15	UKHab_Area	Urban - Vacant/derelict land/bareground	0.06	Low	Poor	Low	Low	0.12	-	-	0.06	0.00
16	UKHab_Area	Urban - Developed land; sealed surface	1.84	Very Low	N/A - No biodiversity value	Low	Low	0.00	-	-	1.84	0.00
17	UKHab_Area	Wetland - Blanket bog	0.23	High	Poor	Moderate	High	1.75	-	-	0.23	0.00
18	UKHab_Area	Wetland - Purple moor grass and rush pastures	0.37	High	Moderate	Moderate	High	5.62	-	-	0.37	0.00

19	UKHab_Area	Wetland - Upland flushes, fens and swamps	0.07	High	Good	Moderate	High	1.59	-	-	0.07	0.00
20	UKHab_Area	Wetland - Upland flushes, fens and swamps	0.02	High	Moderate	Moderate	High	0.30	-	-	0.02	0.00
21	UKHab_Area	Wetland - Upland flushes, fens and swamps	0.11	High	Poor	Moderate	High	0.83	-	-	0.11	0.00
22	UKHab_Area	Woodland and forest - Lowland mixed deciduous woodland	0.02	Medium	Good	Low	High	0.28	-	-	0.02	0.00
23	UKHab_Area	Woodland and forest - Lowland mixed deciduous woodland	0.17	Medium	Moderate	Low	High	1.56	-	-	0.17	0.00
24	UKHab_Area	Woodland and forest - Lowland mixed deciduous woodland	0.13	Medium	Poor	Low	High	0.60	-	-	0.13	0.00
25	UKHab_Area	Woodland and forest - Other woodland; mixed	0.01	Medium	Moderate	Low	Medium	0.09	-	-	0.01	0.00
26	UKHab_Area	Heathland and shrub - Gorse scrub	0.02	Low	Moderate	Moderate	Low	0.09	-	-	0.02	0.00
27								TBC	TBC	TBC		TBC
28	UKHab_Area	Grassland - Bracken	0.54	Medium	Good	Low	Low	6.48	-	-	0.54	0.00
29	UKHab_Area	Grassland - Bracken	1.39	Medium	Moderate	Low	Low	11.12	-	-	1.39	0.00
30	UKHab_Area	Grassland - Bracken	0.02	Medium	Poor	Low	Low	0.08	-	-	0.02	0.00
31	UKHab_Area	Grassland - Modified grassland	2.29	Low	Poor	Low	Low	4.58	-	-	2.29	0.00
32	UKHab_Area	Grassland - Other neutral grassland	0.01	High	Moderate	Moderate	Medium	0.15	-	-	0.01	0.00
33	UKHab_Area	Grassland - Upland acid grassland	0.93	High	Good	Moderate	Medium	20.26	-	-	0.93	0.00
34	UKHab_Area	Grassland - Upland acid grassland	0.74	High	Moderate	Moderate	Medium	10.74	-	-	0.74	0.00
35	UKHab_Area	Grassland - Upland acid grassland	0.12	High	Poor	Moderate	Medium	0.87	-	-	0.12	0.00
36	UKHab_Area	Heathland and shrub - Mixed scrub	0.07	Low	Moderate	Low	Low	0.28	-	-	0.07	0.00
37	UKHab_Area	Heathland and shrub - Mixed scrub	0.22	Low	Poor	Low	Low	0.44	-	-	0.22	0.00
38	UKHab_Area	Heathland and shrub - Upland Heathland	8.26	High	Good	Moderate	High	188.08	-	-	8.26	0.00
39	UKHab_Area	Heathland and shrub - Upland Heathland	0.42	High	Moderate	Moderate	High	6.38	-	-	0.42	0.00
40	UKHab_Area	Rivers and Lakes - Eutrophic standing waters	1.99	High	Moderate	Moderate	High	30.21	-	-	1.99	0.00
41	UKHab_Area	Urban - Developed land; sealed surface	1.17	Very Low	N/A - No biodiversity value	Low	Low	0.00	-	-	1.17	0.00
42	UKHab_Area	Wetland - Blanket bog	0.24	High	Poor	Moderate	High	1.82	-	-	0.24	0.00
43	UKHab_Area	Wetland - Upland flushes, fens and swamps	0.13	High	Moderate	Moderate	High	1.97	-	-	0.13	0.00
44	UKHab_Area	Wetland - Upland flushes, fens and swamps	0.24	High	Poor	Moderate	High	1.82	-	-	0.24	0.00
45	UKHab_Area	Wetland - Purple moor grass and rush pastures	0.04	High	Moderate	Moderate	High	0.61	-	-	0.04	0.00
46	UKHab_Area	Woodland and forest - Lowland mixed deciduous woodland	1.53	Medium	Good	Moderate	High	23.23	-	-	1.53	0.00
47	UKHab_Area	Woodland and forest - Lowland mixed deciduous woodland	0.44	Medium	Poor	Moderate	High	2.23	-	-	0.44	0.00

48	UKHab_Area	Woodland and forest - Other Scot's Pine woodland	0.08	Medium	Poor	Moderate	High	0.40	-	-	0.08	0.00
----	------------	--	------	--------	------	----------	------	------	---	---	------	------



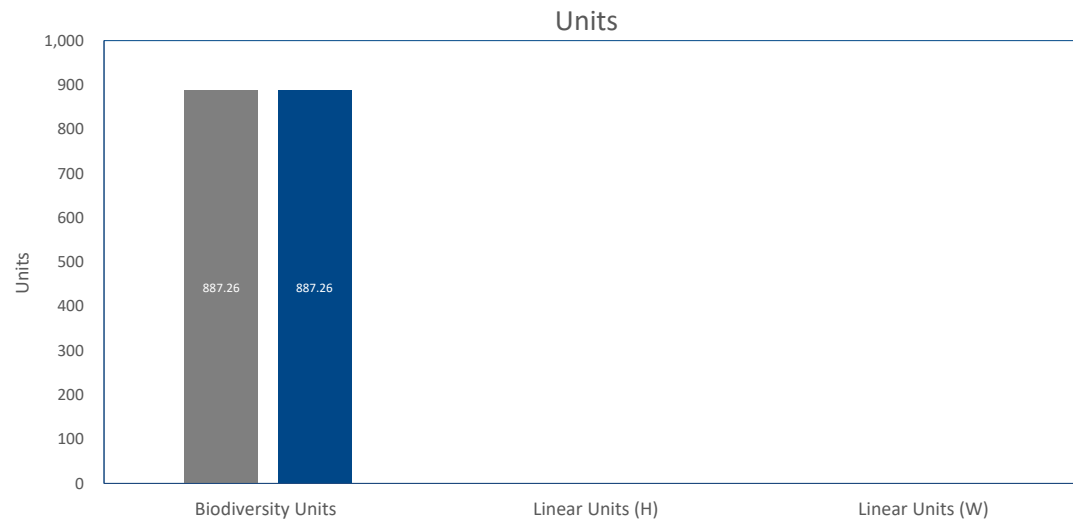
Biodiversity Project Toolkit



Scottish & Southern
Electricity Networks

Summary outputs

Review the automatically updated biodiversity unit and linear habitat (hedgerow (H) and water courses (W)) results graphs to help the optioneering process and site selection.



% Change	
Biodiversity (Area)	0%
Linear Units (H)	-
Linear Units (W)	-

Before Works	Units
Biodiversity (Area)	887.26
Linear Units (H)	0.00
Linear Units (W)	0.00

Post Development	Units
Biodiversity (Area)	887.26
Linear Units (H)	0.00
Linear Units (W)	0.00

Net Change	Units
Biodiversity (Area)	0.00
Linear Units (H)	0.00
Linear Units (W)	0.00

wsp

APPENDIX 4

NON-IRREPLACEABLE BASELINE HABITATS

Table A-1: Area-Based Non-Irreplaceable Baseline Habitats and Conditions affected by Permanent Loss (Section 37)

UKHab Habitat Type	Area (ha)	Condition	Distinctiveness	Biodiversity Units (BU)	Post-development Construction	Post-development Habitat
Grassland - Upland acid grassland	0.16	Good	High	3.48	Permanent Access Track	Urban – Developed land; sealed surface
Heathland and shrub - Upland Heathland	0.03	Good	High	0.68	Permanent Access Track	Urban – Developed land; sealed surface
Heathland and shrub - Upland Heathland	0.08	Moderate	High	1.21	Permanent Access Track	Urban – Developed land; sealed surface
Grassland - Bracken	0.01	Good	Medium	0.12	CSE compound	Urban – Developed land; sealed surface
Heathland and shrub – Upland heathland	0.02	Good	High	0.46	CSE compound	Urban – Developed land; sealed surface
Grassland - Upland acid grassland	0.10	Good	High	2.18	CSE compound	Urban – Developed land; sealed surface
Heathland and shrub - Mixed scrub	0.02	Poor	Low	0.04	Temporary construction compound	Heathland and shrub - Mixed scrub
Heathland and shrub - Mixed scrub	0.02	Good	Low	0.12	Temporary construction compound	Heathland and shrub - Mixed scrub
Heathland and shrub - Upland Heathland	0.82	Moderate	High	12.45	Temporary construction compound	Heathland and shrub - Upland Heathland
Woodland and forest - Lowland mixed deciduous woodland	0.02	Moderate	Medium	0.18	Temporary construction compound	Woodland and forest - Lowland mixed deciduous woodland
Heathland and shrub – Gorse scrub	0.03	Poor	Low	0.06	Temporary construction compound	Heathland and shrub – Gorse scrub
Total	1.31	-	-	20.99	-	-

Table A-2: Area-Based Non-Irreplaceable Baseline Habitats and Conditions affected by Permanent Loss (General Permitted Development)

UKHab Habitat Type	Area (ha)	Condition	Distinctiveness	Biodiversity Units (BU)	Post-development Construction	Post-development Habitat
Grassland - Bracken	0.04	Good	Medium	0.48	2.5 m excavation buffer for UGC	Grassland - Bracken
Grassland - Bracken	0.19	Moderate	Medium	1.52	2.5 m excavation buffer for UGC	Grassland - Bracken
Grassland - Other neutral grassland	0.06	Moderate	High	0.87	2.5 m excavation buffer for UGC	Grassland - Other neutral grassland
Grassland - Upland acid grassland	0.11	Good	High	2.40	2.5 m excavation buffer for UGC	Grassland - Upland acid grassland
Grassland - Upland acid grassland	0.06	Moderate	High	0.87	2.5 m excavation buffer for UGC	Grassland - Upland acid grassland
Heathland and shrub - Upland Heathland	0.80	Good	High	18.22	2.5 m excavation buffer for UGC	Heathland and shrub - Upland Heathland
Heathland and shrub - Upland Heathland	0.05	Moderate	High	0.76	2.5 m excavation buffer for UGC	Heathland and shrub - Upland Heathland
Rivers and Lakes - Eutrophic standing waters	0.01	Moderate	High	0.15	2.5 m excavation buffer for UGC	Rivers and Lakes - Eutrophic standing waters
Wetland - Purple moor grass and rush pastures	0.03	Moderate	High	0.46	2.5 m excavation buffer for UGC	Wetland - Purple moor grass and rush pastures
Total	1.35	-	-	25.72	-	-