

Harris to Stornoway 132 kV Overhead Line Replacement

Environmental Impact Assessment Report:
Volume 3a: Figures
October 2022

Application for consent under Section 37 of the
Electricity Act 1989

RAMBOLL

 **Scottish & Southern
Electricity Networks**

TRANSMISSION

VOLUME 3a - TABLE OF CONTENTS

Figure 1.1: Location Plan and Overview

Figure 2.1a- e: Proposed Development

Figure 2.2a- e: Land Take and Forestry Removal

Figure 2.3a-f: Access Strategy

Figure 3.1: Proposed Corridor

Figure 3.2a-f: Route Options

Figure 3.3a-f: Alignment Options

Figure 3.4: Preferred Alignment

Figure 6.1: ZTV, Study Area and Viewpoint Locations

Figure 6.2: Topography and Viewpoint Locations

Figure 6.3a: Seascape Character Types, Landscape Character Types and Viewpoint Locations

Figure 6.4a-b: Landscape Designations and Classifications and Viewpoint Locations

Figure 6.5a-f: Visual Receptors with ZTV and Viewpoint Locations – Overview

Figure 6.6a-i: Cumulative Developments

Figure 7.1a-j: Cultural Heritage Assets within the Study Areas

Figure 8.1: Ecology Constraints

Figure 8.2a-f: Phase 1 Habitats

Figure 8.3a-f: NVC

Figure 8.4a-f: GWDTE

Figure 9.1: Ornithology Survey Locations

Figure 9.2: Designated Sites

Figure 9.3a-g: Vantage Point Survey Results - Golden Eagle

Figure 9.4a-f: Moorland Bird Survey Results

Figure 9.5a-f: Wintering Bird Survey Results -East Loch Tarbert, Loch Direcleit and Loch Ceann Dibig

Figure 9.6: Confidential Survey Results

Figure 9.7: Line Marking

Figure 10.1a-r: Surface Water Features

Figure 10.2a-f: Drinking Water Protected Areas

Figure 10.3a-f: Bedrock Geology

Figure 10.4a-f: Superficial Geology

Figure 10.5a-f: Hydrogeology

Figure 10.6a-f: Carbon and Peatland Mapping 2016

Figure 10.7a-r: Peat Depth Plan

Figure 10.8a-r: Habitats with the Potential to be Groundwater Dependent Terrestrial Ecosystems – National Vegetation Classification

Figure 10.9a-f: Private Water Supplies

Figure 11.1: Study Area

Figure 11.2: Traffic Count Locations

Figure 11.3: Accident Locations

Figure 11.4: Construction Traffic Delivery Route

Figure 12.1: Cumulative Developments

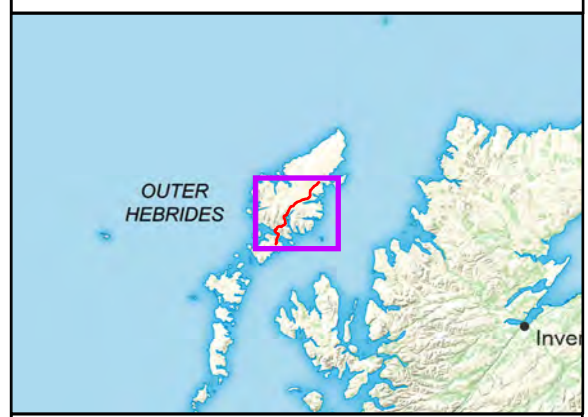
Figure 1.1: Location Plan and Overview

Figure 2.1a- f: Proposed Development



Legend

- Proposed Alignment
- Harris 132 kV Grid Supply Point
- Stornoway Substation



Reproduced by permission of Ordnance Survey on behalf of HMSO. Crown copyright and database right 2022 all rights reserved. Ordnance Survey Licence number 0100022432.

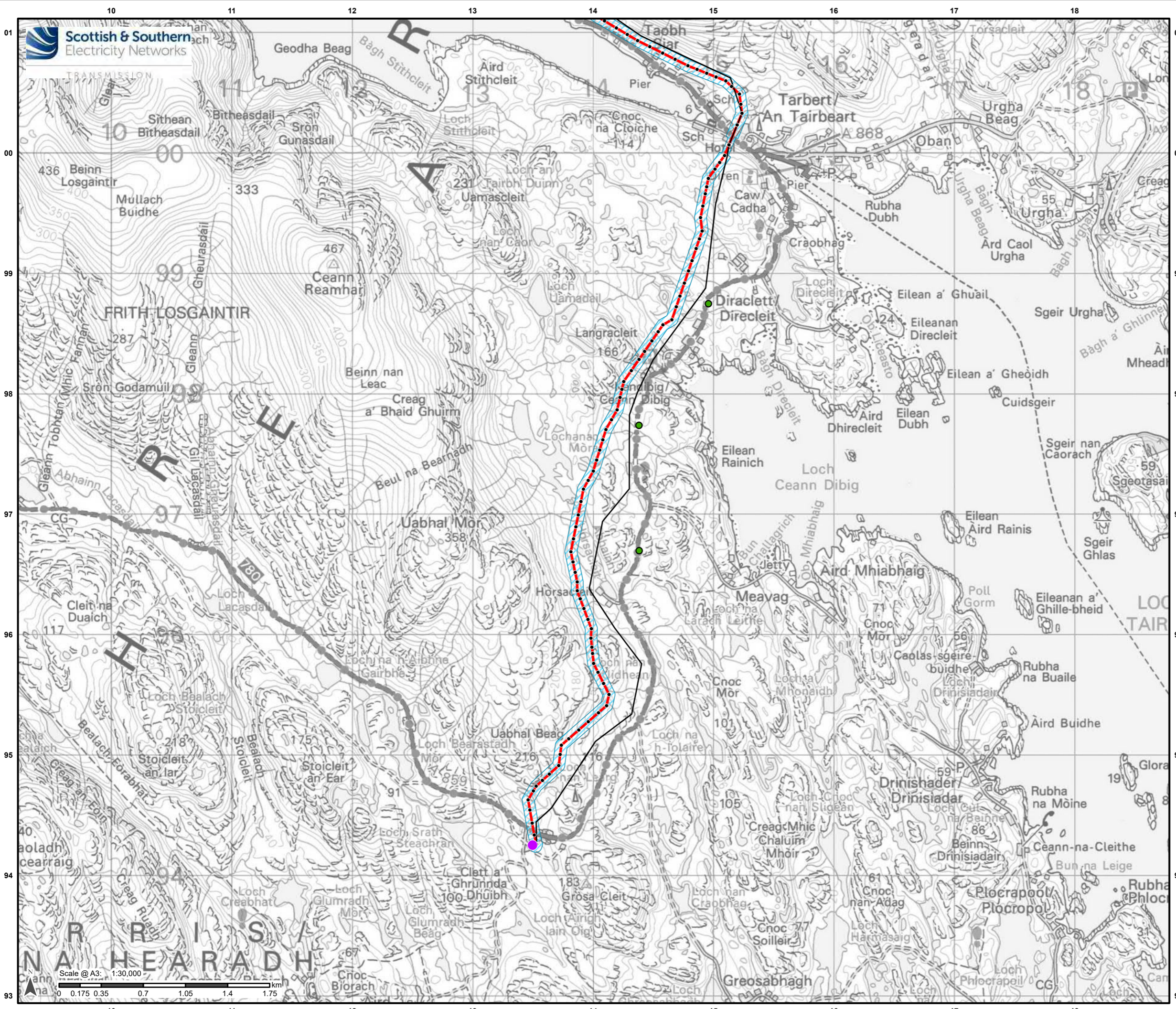
Project No: LT0245
Project: Harris to Stornoway 132 kV OHL Replacement

Title: Figure 1.1: Location Plan and Overview

Drawn by: AB Date: 09/08/2022

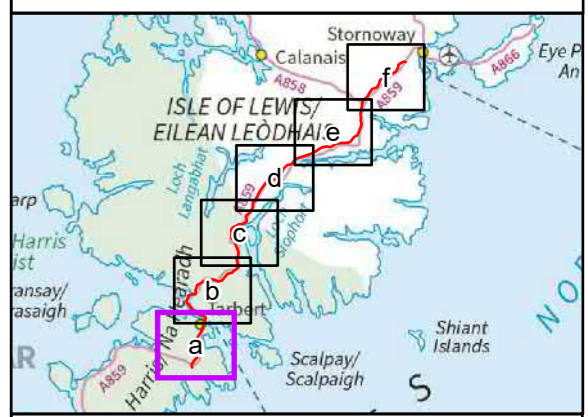
Drawing: R162_11469_001_Fig1-1_LocationPlan_C





Legend

- Proposed Alignment
- Indicative Pole Location
- Harris 132kV Grid Supply Point
- Proposed New Bellmouth Junction Location
- Limit of Deviation
- Existing 132kV OHL to be Dismantled



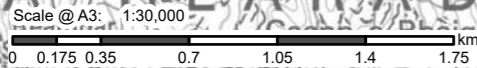
Reproduced by permission of Ordnance Survey on behalf of HMSO. Crown copyright and database right 2022 all rights reserved. Ordnance Survey Licence number 0100022432.

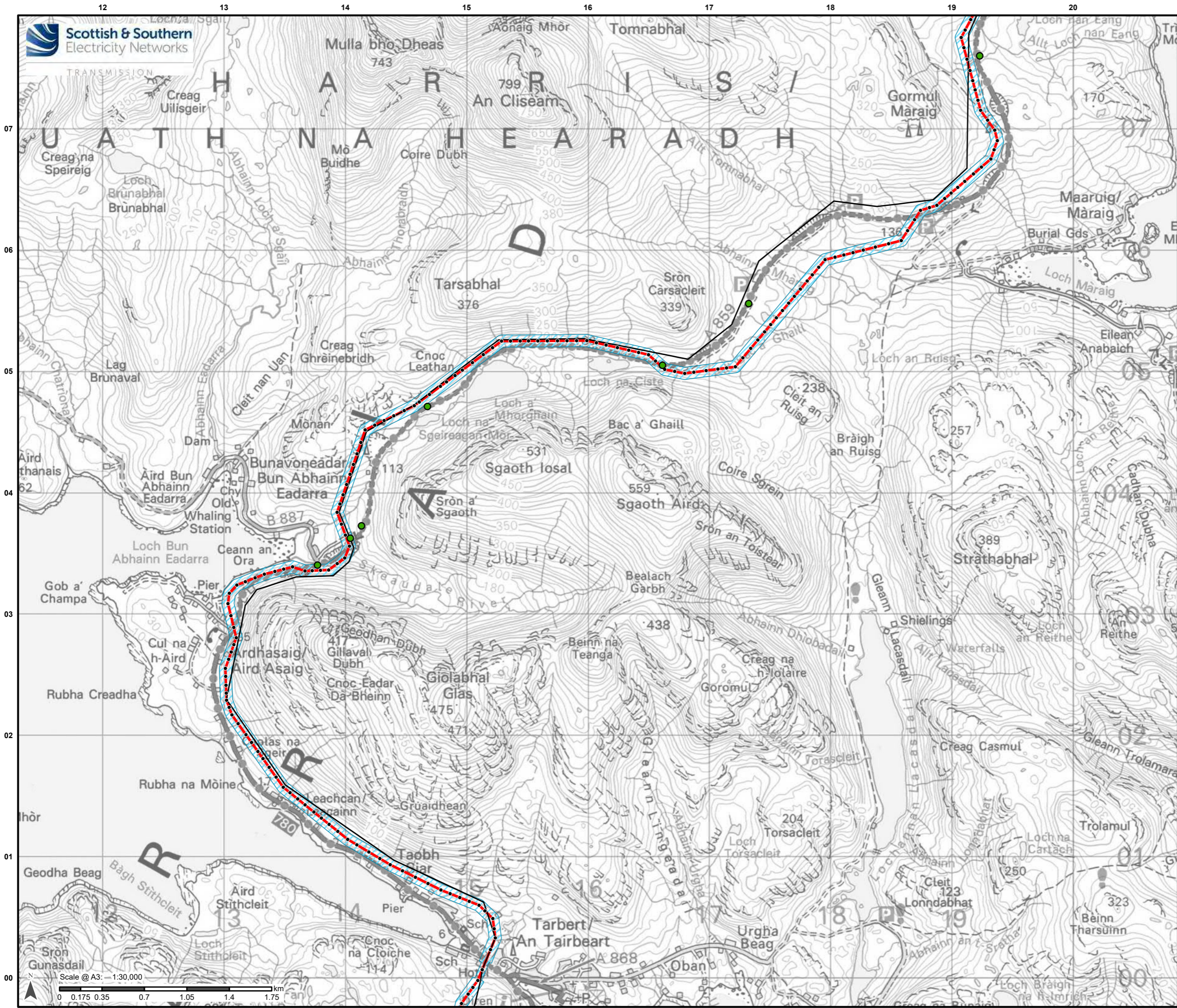
Project No: LT0245
Project: Harris to Stornoway 132 kV OHL Replacement

Title: Figure 2.1a:
Proposed Development

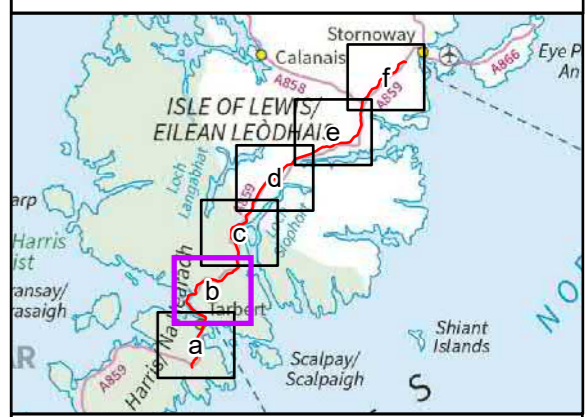
Drawn by: AB Date: 24/08/2022

Drawing: R162_11469_001_Fig2-1_ProposedDev_D





- Legend**
- Proposed Alignment
 - Indicative Pole Location
 - Proposed New Bellmouth Junction Location
 - Limit of Deviation
 - Existing 132kV OHL to be Dismantled



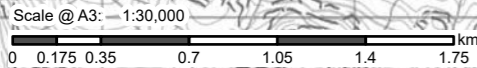
Reproduced by permission of Ordnance Survey on behalf of HMSO. Crown copyright and database right 2022 all rights reserved. Ordnance Survey Licence number 0100022432.

Project No: LT0245
Project: Harris to Stornoway 132 kV OHL Replacement

Title: Figure 2.1b:
Proposed Development

Drawn by: AB Date: 24/08/2022

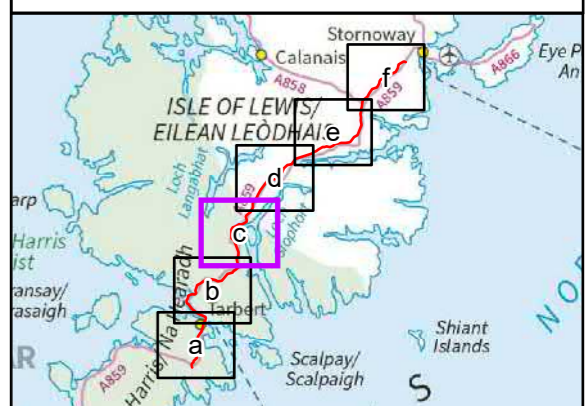
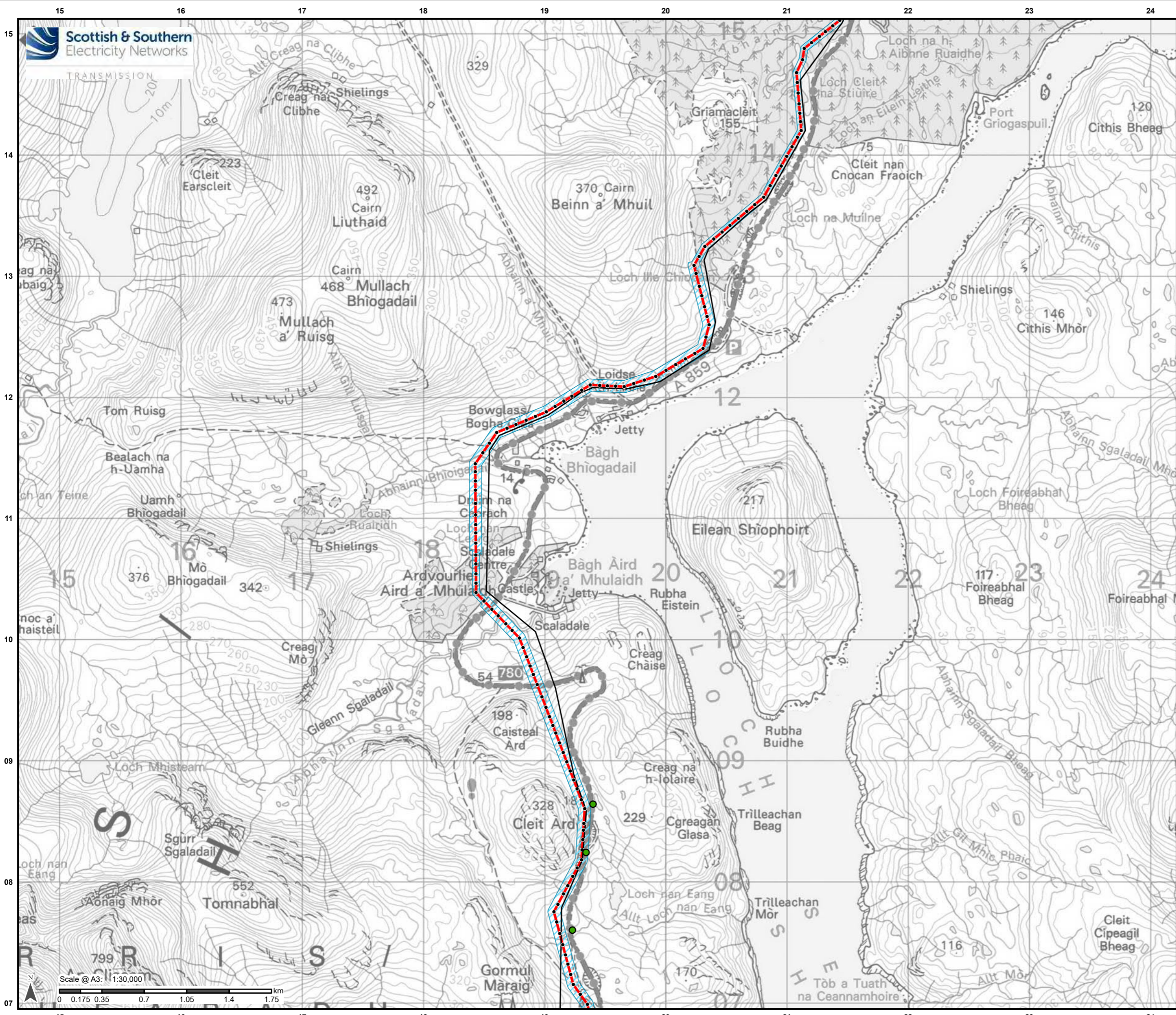
Drawing: R162_11469_001_Fig2-1_ProposedDev_D



Scale @ A3: 1:30,000

Legend

- Proposed Alignment
- Indicative Pole Location
- Proposed New Bellmouth Junction Location
- Limit of Deviation
- Existing 132kV OHL to be Dismantled



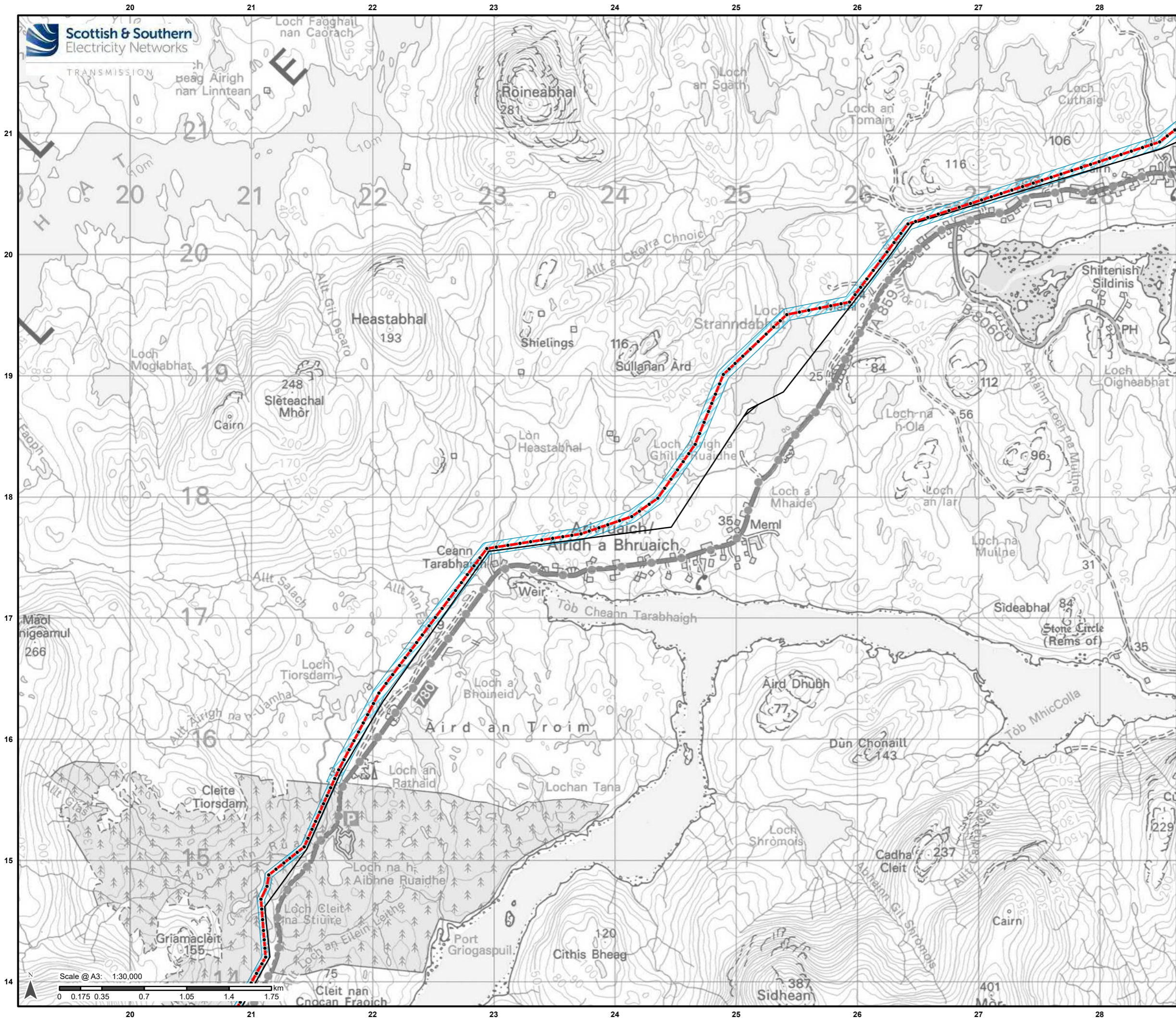
Reproduced by permission of Ordnance Survey on behalf of HMSO.
Crown copyright and database right 2022 all rights reserved.
Ordnance Survey Licence number 0100022432.

Project No: LT0245
Project: Harris to Stornoway 132 kV OHL Replacement

Title: Figure 2.1c:
Proposed Development

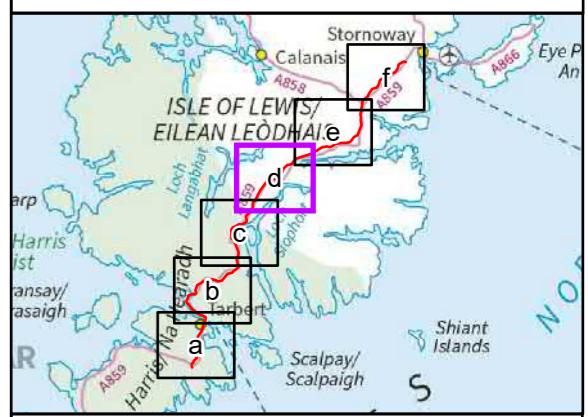
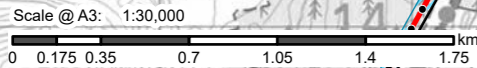
Drawn by: AB Date: 24/08/2022

Drawing: R162_11469_001_Fig2-1_ProposedDev_D



Legend

- Proposed Alignment
- Indicative Pole Location
- Limit of Deviation
- Existing 132kV OHL to be Dismantled



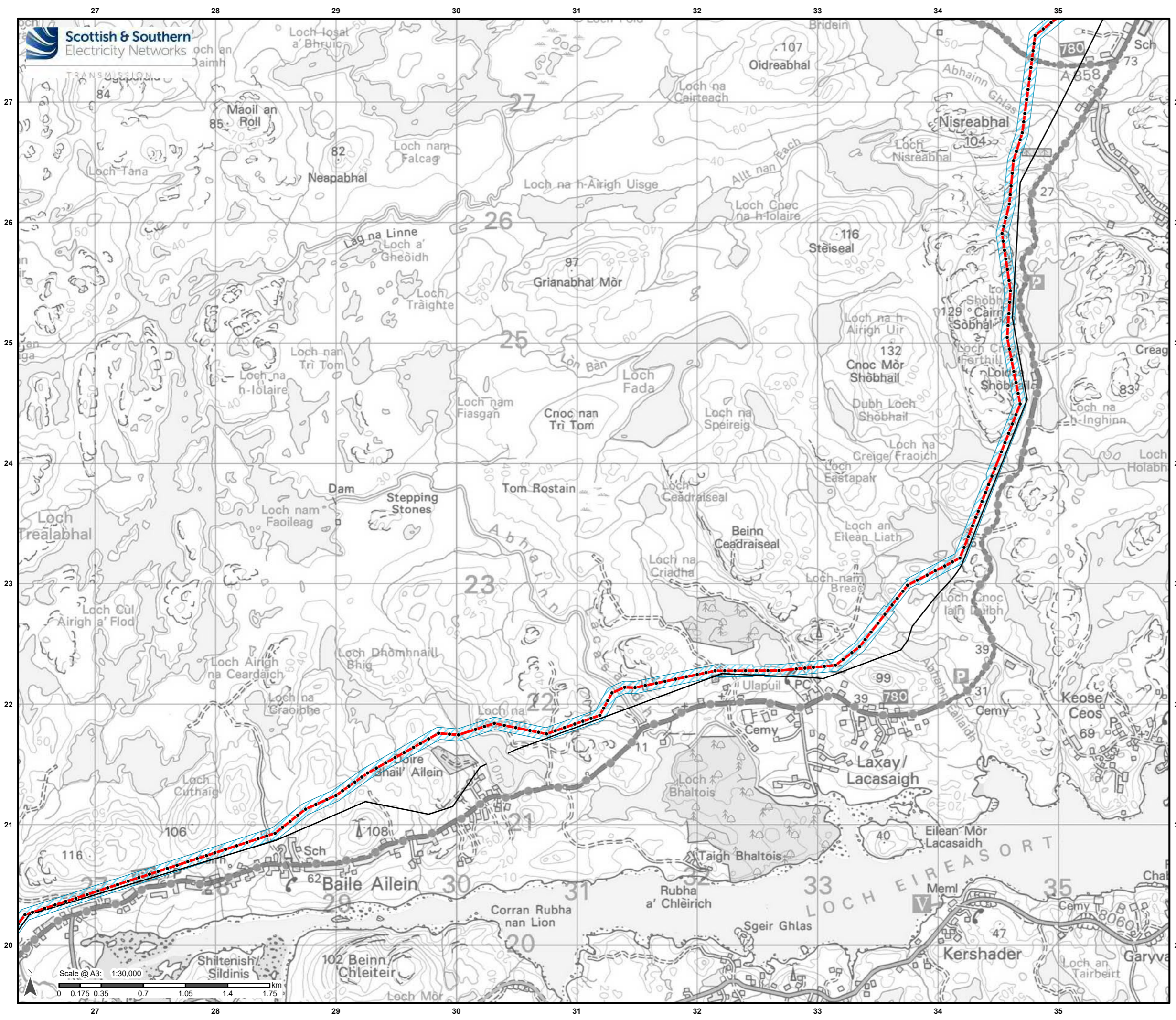
Reproduced by permission of Ordnance Survey on behalf of HMSO. Crown copyright and database right 2022 all rights reserved. Ordnance Survey Licence number 0100022432.

Project No: LT0245
Project: Harris to Stornoway 132 kV OHL Replacement

Title: Figure 2.1d:
Proposed Development

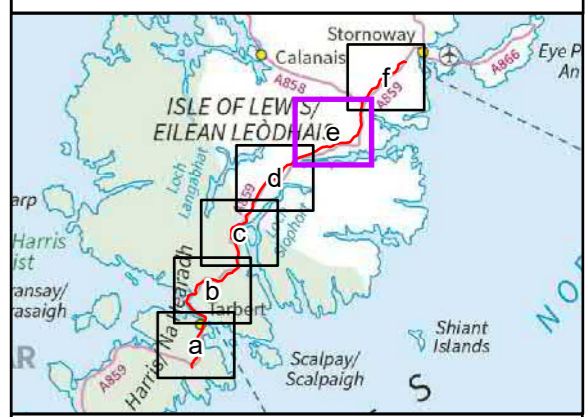
Drawn by: AB Date: 24/08/2022

Drawing: R162_11469_001_Fig2-1_ProposedDev_D



Legend

- Proposed Alignment
- Indicative Pole Location
- Limit of Deviation
- Existing 132kV OHL to be Dismantled



Reproduced by permission of Ordnance Survey on behalf of HMSO.
Crown copyright and database right 2022 all rights reserved.
Ordnance Survey Licence number 0100022432.

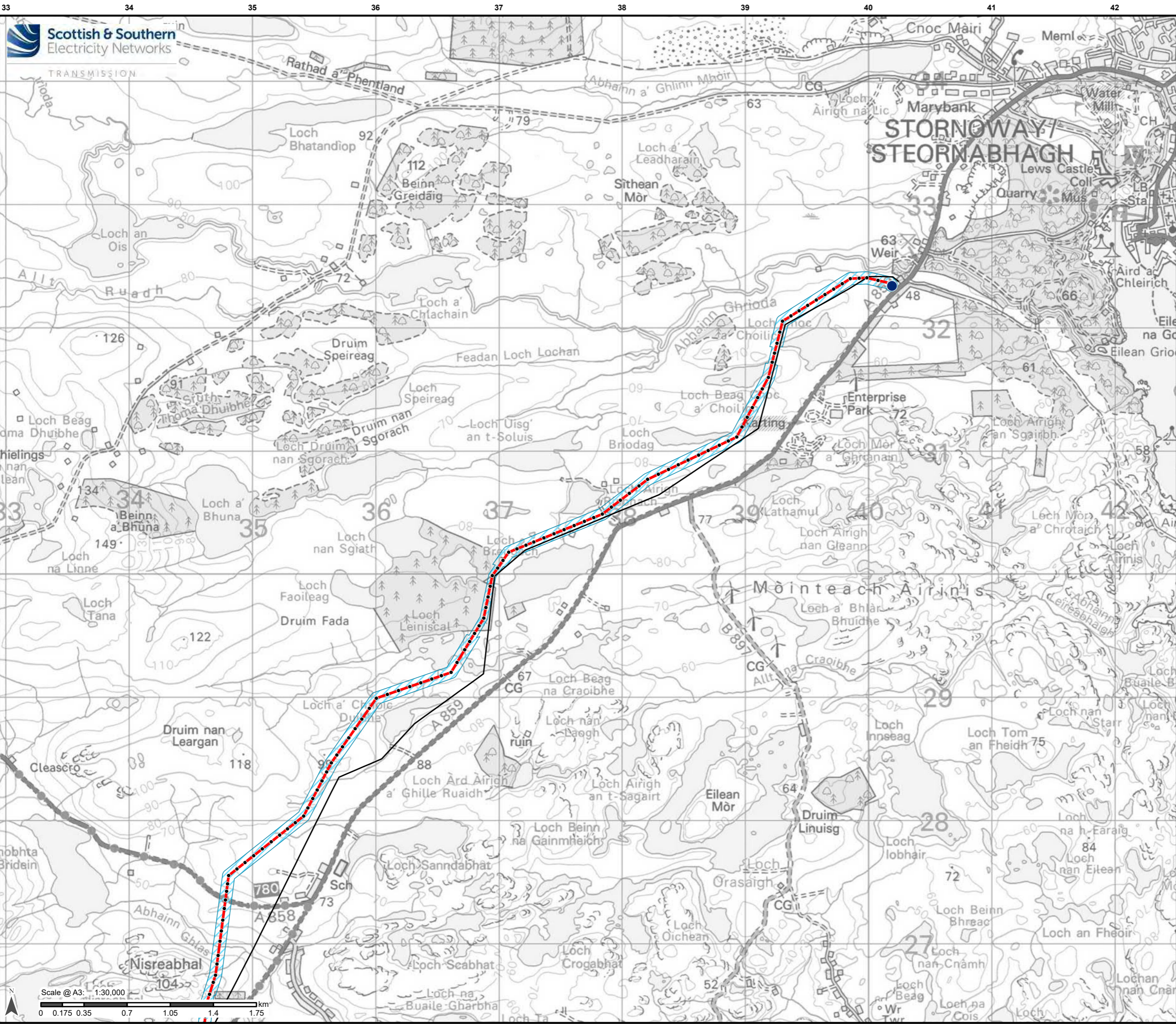
Project No: LT0245
Project: Harris to Stornoway 132 kV OHL Replacement

Title: Figure 2.1e:
Proposed Development

Drawn by: AB Date: 24/08/2022

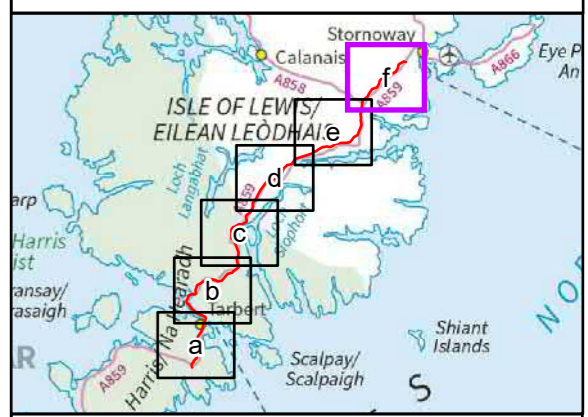
Drawing: R162_11469_001_Fig2-1_ProposedDev_D





Legend

- Proposed Alignment
- Indicative Pole Location
- Stornoway Substation
- Limit of Deviation
- Existing 132kV OHL to be Dismantled



Reproduced by permission of Ordnance Survey on behalf of HMSO.
Crown copyright and database right 2022 all rights reserved.
Ordnance Survey Licence number 0100022432.

Project No: LT0245
Project: Harris to Stornoway 132 kV OHL Replacement

Title: Figure 2.1f:
Proposed Development

Drawn by: AB Date: 24/08/2022

Drawing: R162_11469_001_Fig2-1_ProposedDev_D