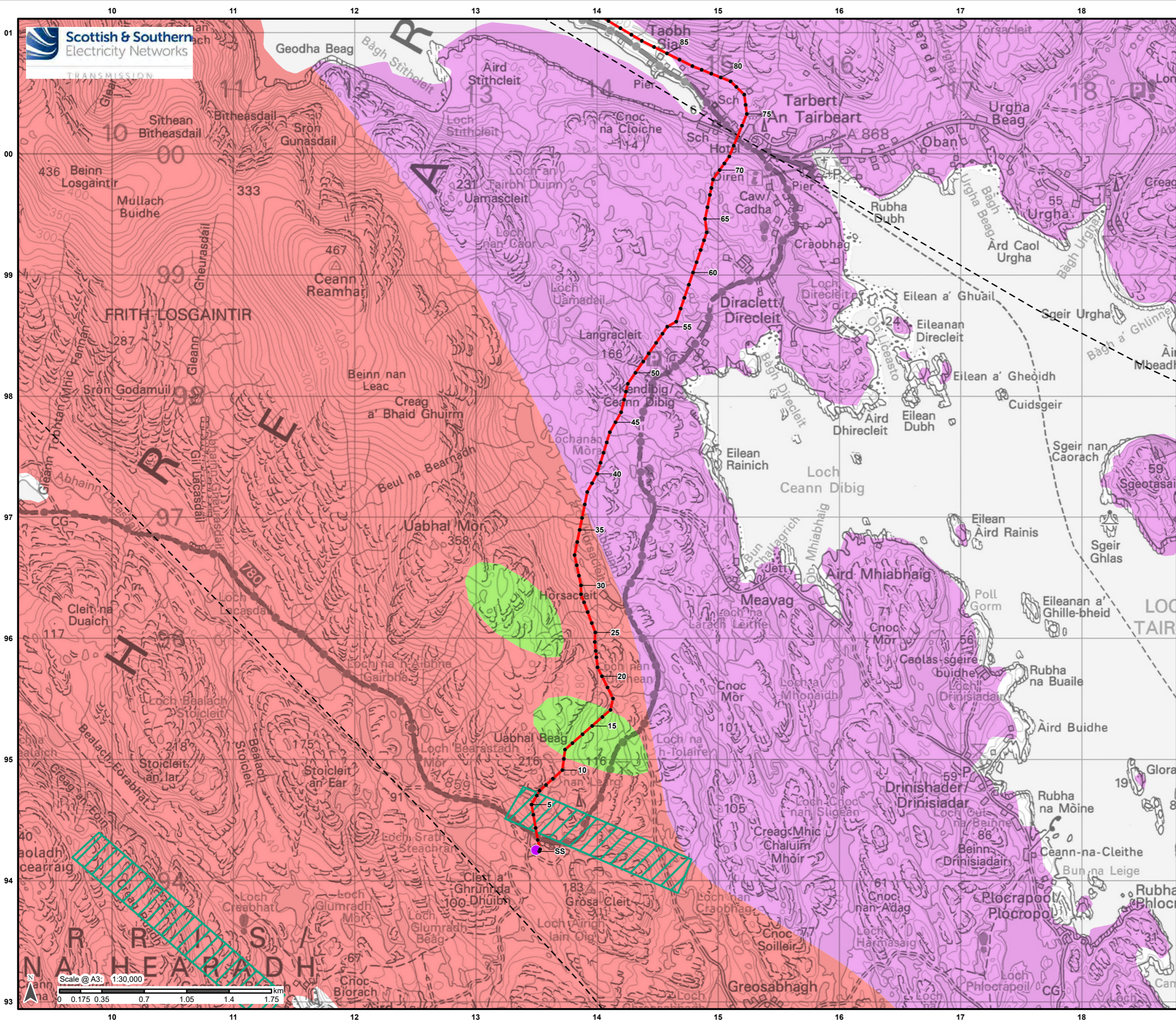


Figure 10.3a-f: Bedrock Geology



Legend

- Proposed Alignment
- Indicative Pole Location
- Harris 132kV Grid Supply Point

Fault Lines (BGS 625k)

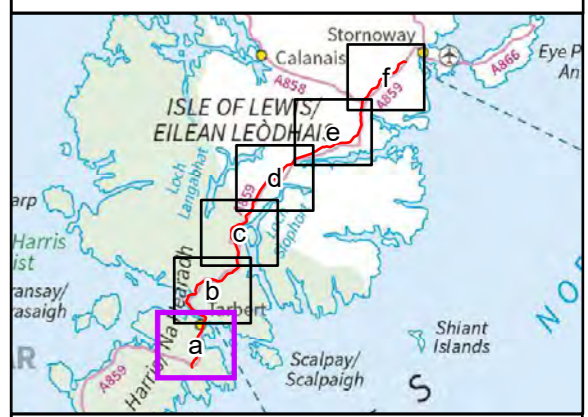
- - - Fault at rockhead

Dykes (BGS 625k)

- Lewisian Complex - Mafic Gneiss

Bedrock Geology (BGS 625k)

- Unnamed Igneous Intrusion, Palaeoproterozoic - Felsic-Rock
- Unnamed Igneous Intrusion, Palaeoproterozoic - Mafic Igneous-Rock
- Lewisian Complex - Gneiss



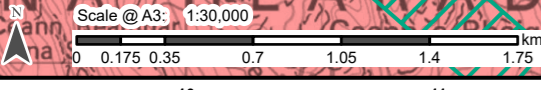
Reproduced by permission of Ordnance Survey on behalf of HMSO. Crown copyright and database right 2022 all rights reserved. Ordnance Survey Licence number 0100022432.

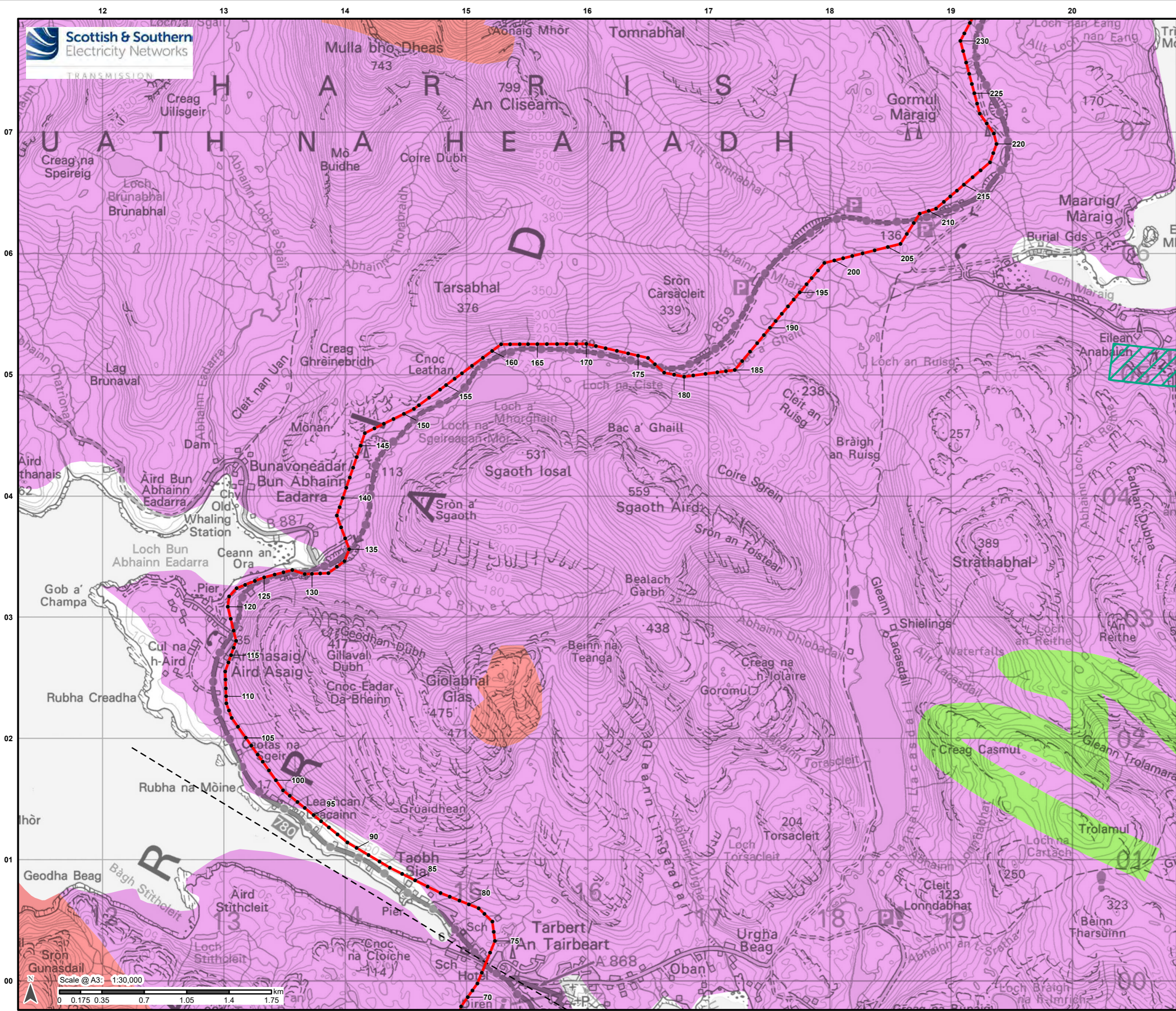
Project No: LT0245
Project: Harris to Stornoway 132 kV OHL Replacement

Title: Figure 10.3a: Bedrock Geology

Drawn by: AB Date: 02/09/2022

Drawing: R162_11469_001_Fig10-3_BedrockGeo_A





Legend

- Proposed Alignment
- Indicative Pole Location

Fault Lines (BGS 625k)

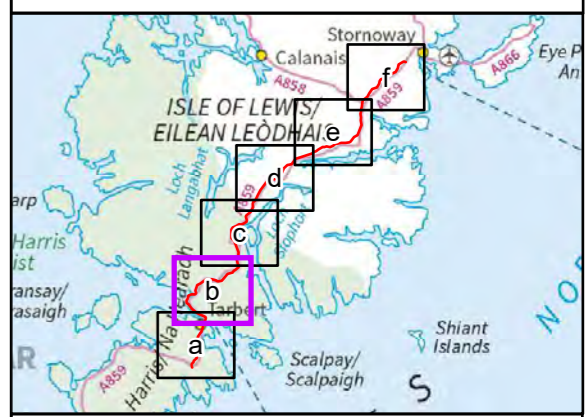
- Fault at rockhead

Dykes (BGS 625k)

- Lewisian Complex - Mafic Gneiss

Bedrock Geology (BGS 625k)

- Unnamed Igneous Intrusion, Palaeoproterozoic - Felsic-Rock
- Unnamed Igneous Intrusion, Palaeoproterozoic - Mafic Igneous-Rock
- Lewisian Complex - Gneiss



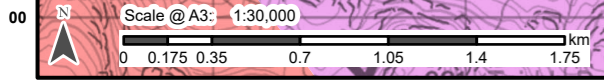
Reproduced by permission of Ordnance Survey on behalf of HMSO. Crown copyright and database right 2022 all rights reserved. Ordnance Survey Licence number 0100022432.

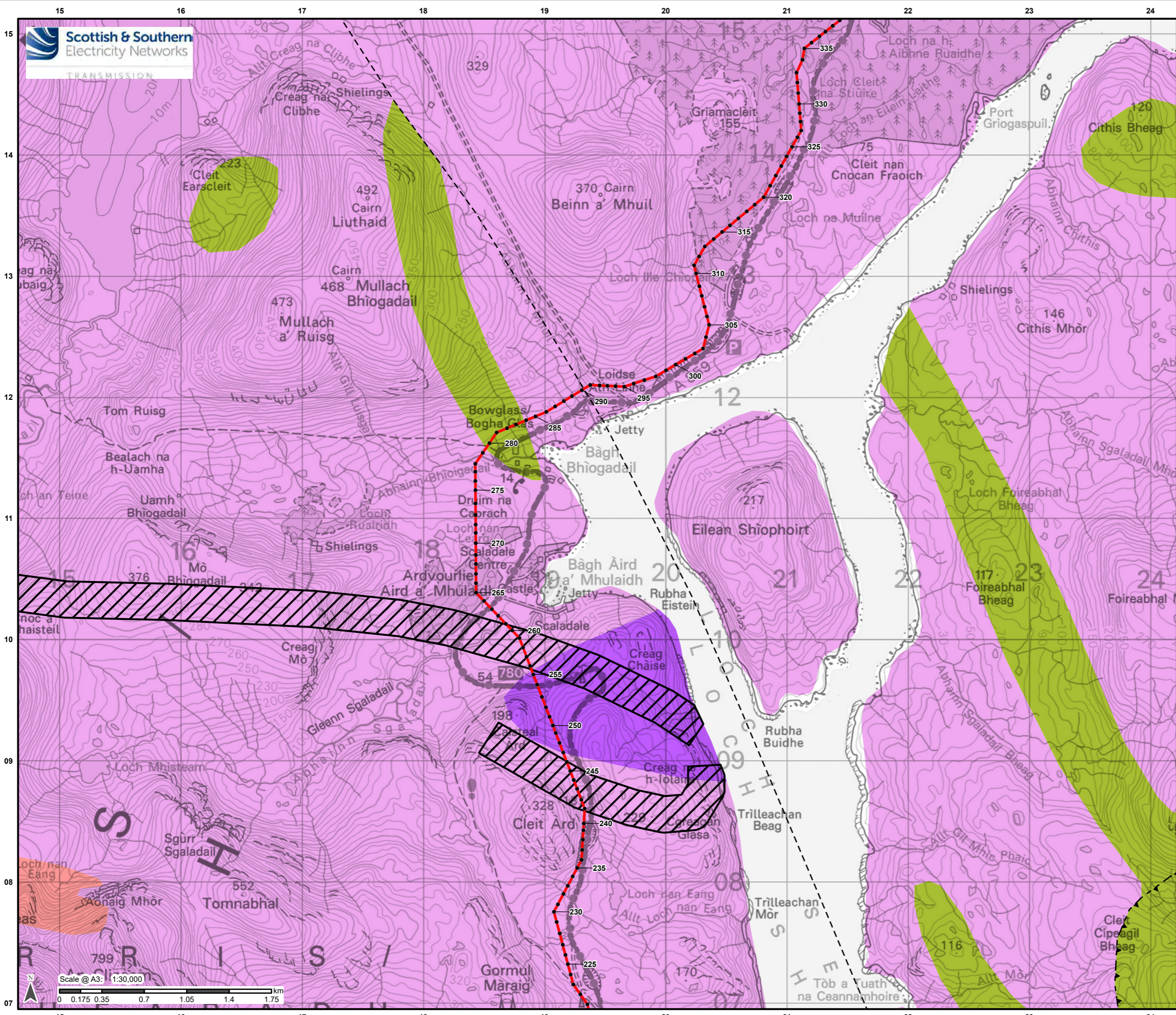
Project No: LT0245
Project: Harris to Stornoway 132 kV OHL Replacement

Title: Figure 10.3b: Bedrock Geology

Drawn by: AB Date: 02/09/2022

Drawing: R162_11469_001_Fig10-3_BedrockGeo_A





Legend

- Proposed Alignment
- Indicative Pole Location

Fault Lines (BGS 625k)

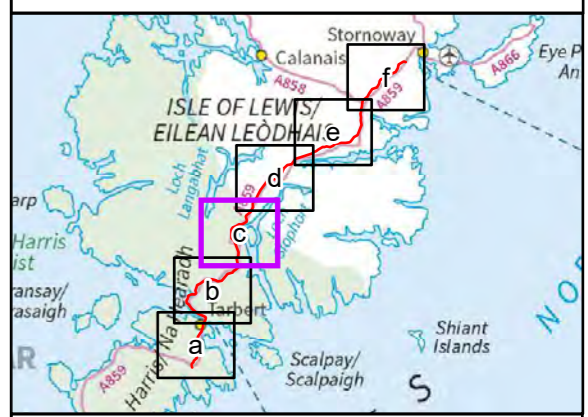
- Fault at rockhead
- Thrust Fault; barbs on hanging wall side

Dykes (BGS 625k)

- Unnamed Igneous Intrusion, Palaeoproterozoic - Mafic Igneous-Rock

Bedrock Geology (BGS 625k)

- Fault Zone Rocks, Unassigned - Mylonitic-Rock and Fault-Breccia
- Unnamed Igneous Intrusion, Palaeoproterozoic - Felsic-Rock
- Lewisian Complex - Mafic Gneiss
- Lewisian Complex - Gneiss



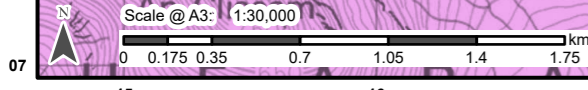
Reproduced by permission of Ordnance Survey on behalf of HMSO. Crown copyright and database right 2022 all rights reserved. Ordnance Survey Licence number 0100022432.

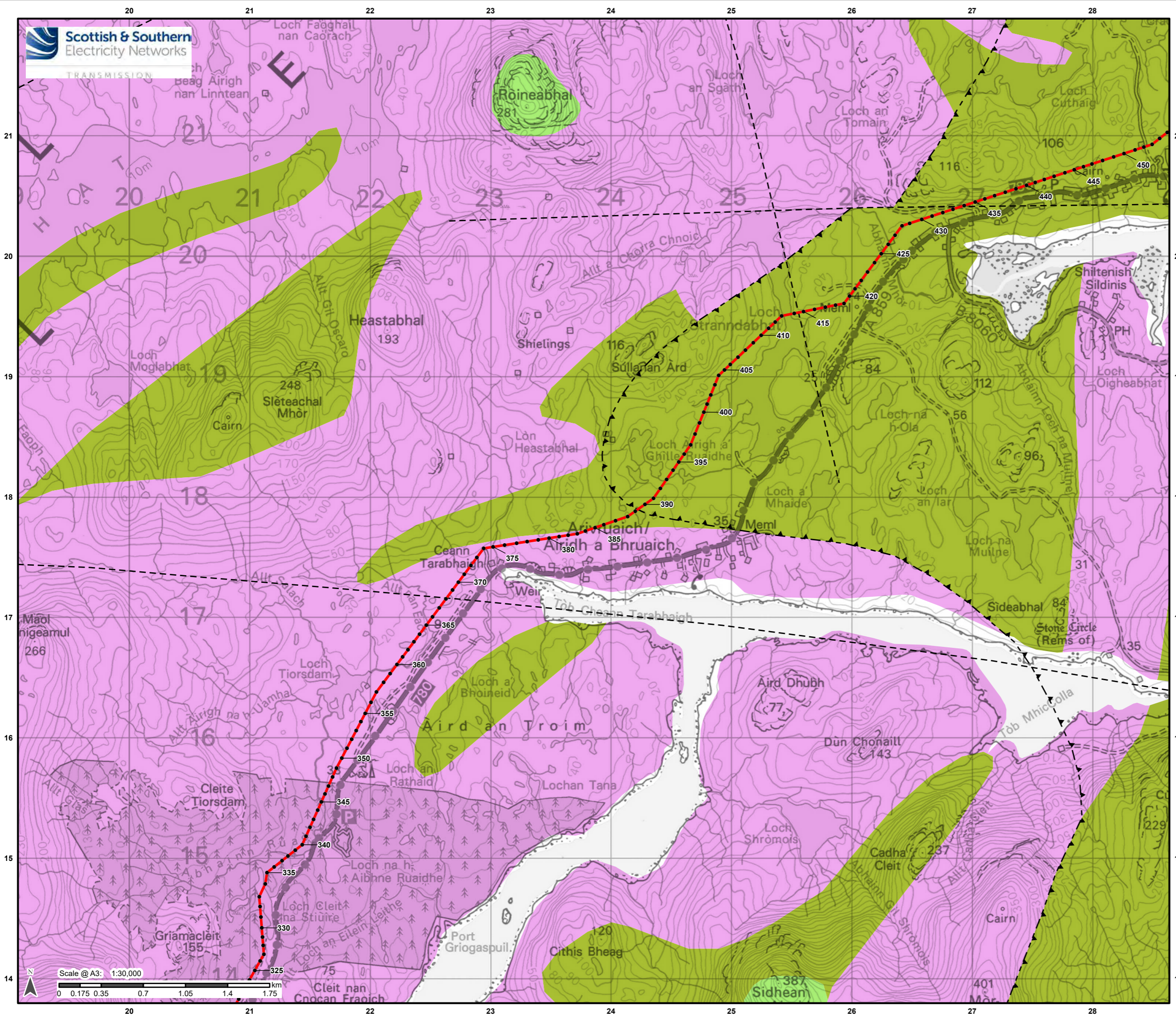
Project No: LT0245
Project: Harris to Stornoway 132 kV OHL Replacement

Title: Figure 10.3c: Bedrock Geology

Drawn by: AB Date: 02/09/2022

Drawing: R162_11469_001_Fig10-3_BedrockGeo_A





Legend

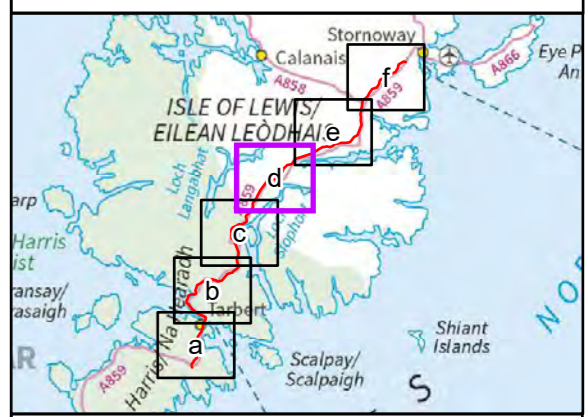
- Proposed Alignment
- Indicative Pole Location

Fault Lines (BGS 625k)

- Fault at rockhead
- Thrust Fault; barbs on hanging wall side

Bedrock Geology (BGS 625k)

- Fault Zone Rocks, Unassigned - Mylonitic-Rock and Fault-Breccia
- Unnamed Igneous Intrusion, Palaeoproterozoic - Mafic Igneous-Rock
- Lewisian Complex - Gneiss



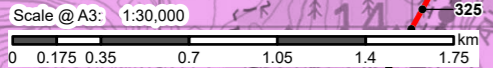
Reproduced by permission of Ordnance Survey on behalf of HMSO. Crown copyright and database right 2022 all rights reserved. Ordnance Survey Licence number 0100022432.

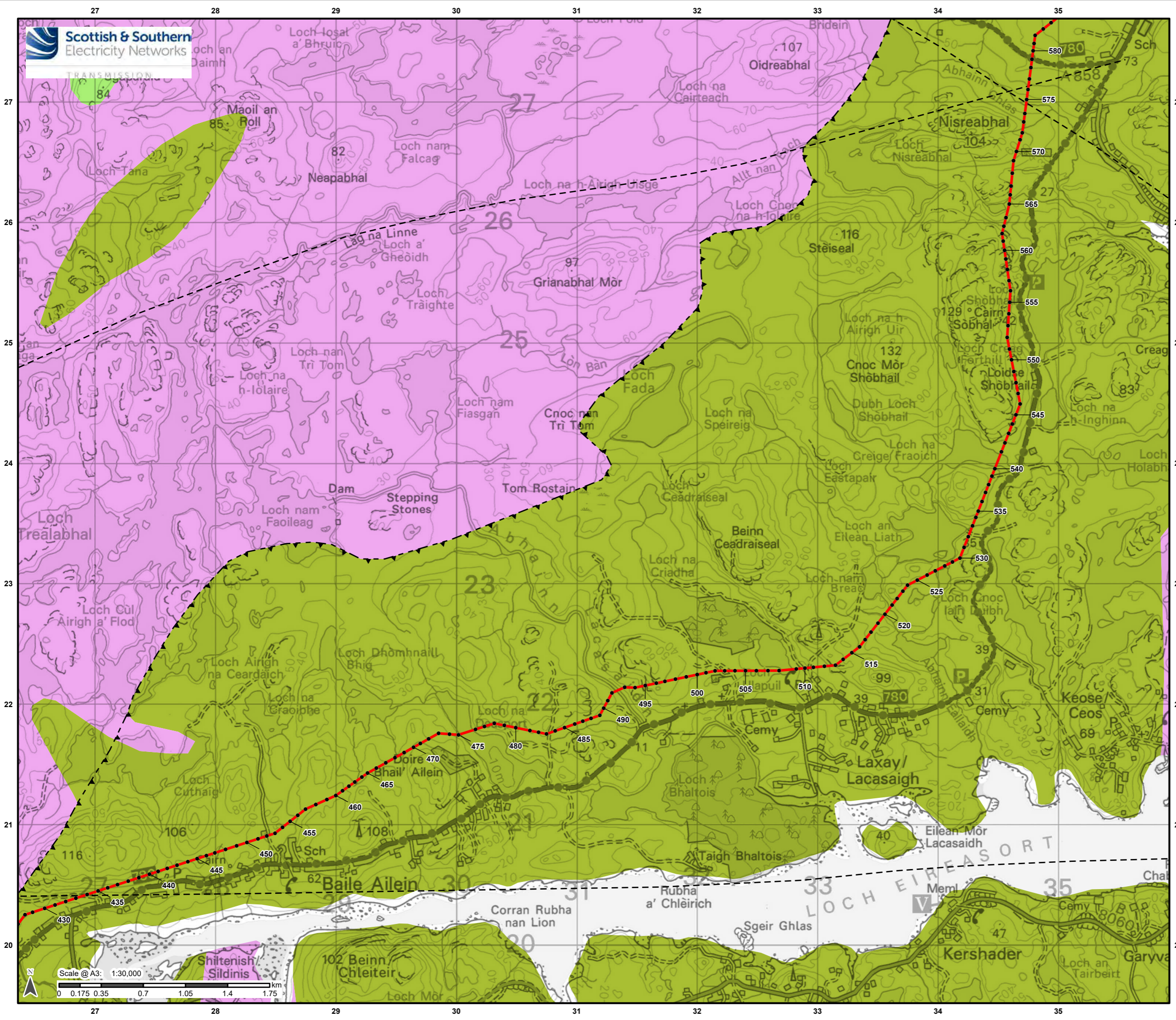
Project No: LT0245
Project: Harris to Stornoway 132 kV OHL Replacement

Title: Figure 10.3d: Bedrock Geology

Drawn by: AB Date: 02/09/2022

Drawing: R162_11469_001_Fig10-3_BedrockGeo_A





Legend

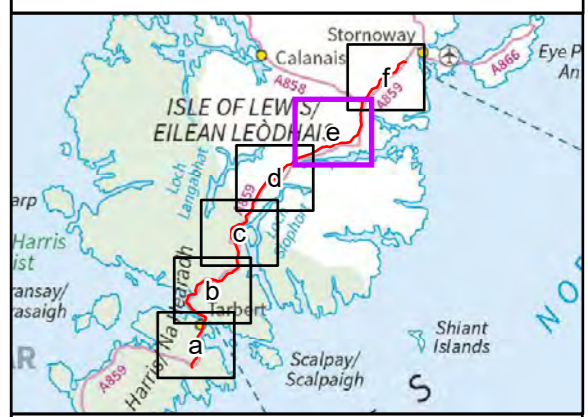
- Proposed Alignment
- Indicative Pole Location

Fault Lines (BGS 625k)

- Fault at rockhead
- ▲--- Thrust Fault; barbs on hanging wall side

Bedrock Geology (BGS 625k)

- Fault Zone Rocks, Unassigned - Mylonitic-Rock and Fault-Breccia
- Unnamed Igneous Intrusion, Palaeoproterozoic - Mafic Igneous-Rock
- Lewisian Complex - Gneiss



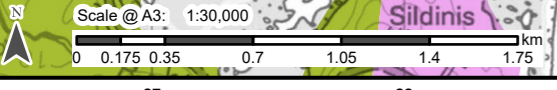
Reproduced by permission of Ordnance Survey on behalf of HMSO. Crown copyright and database right 2022 all rights reserved. Ordnance Survey Licence number 0100022432.

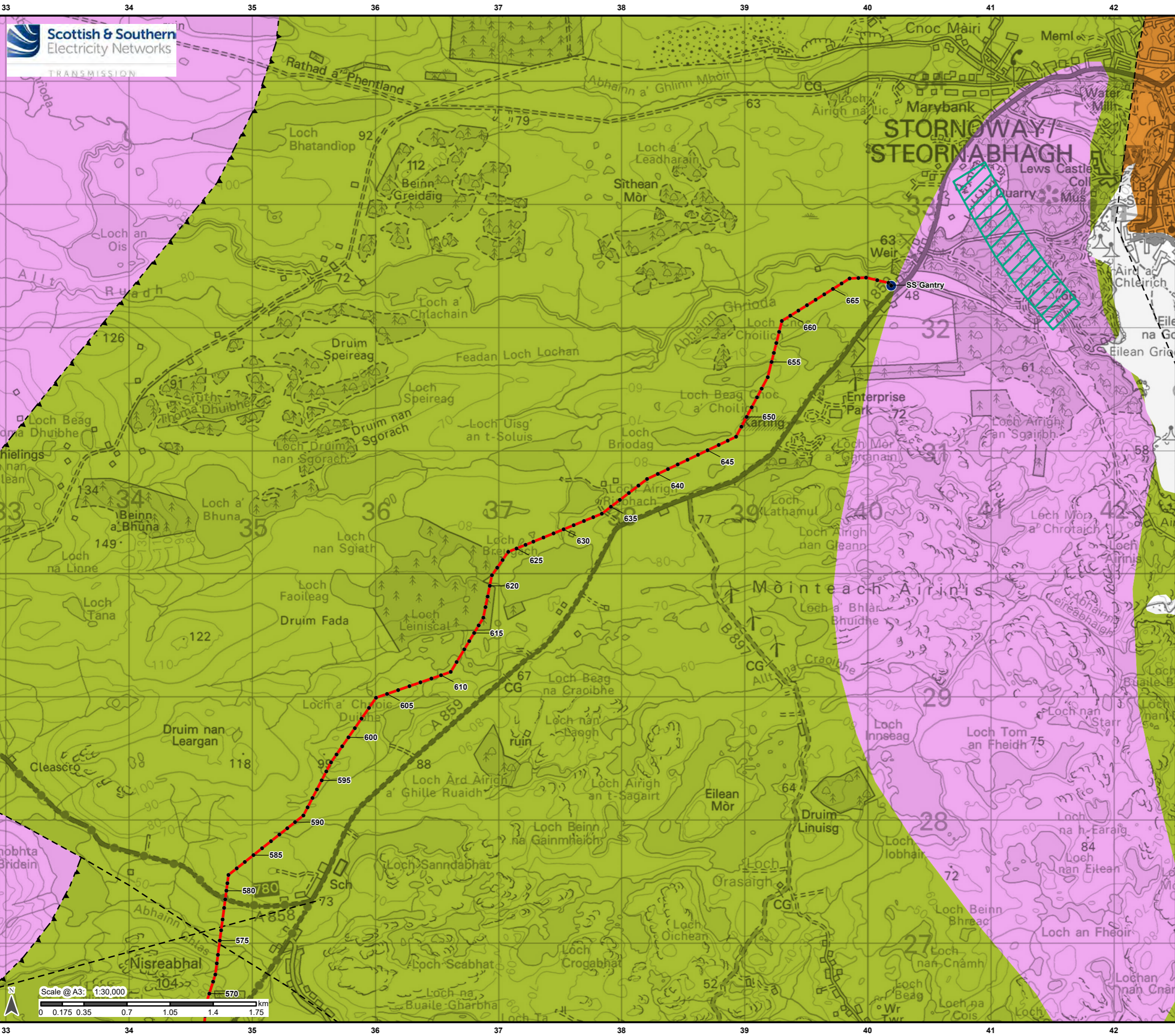
Project No: LT0245
Project: Harris to Stornoway 132 kV OHL Replacement

Title: Figure 10.3e: Bedrock Geology

Drawn by: AB Date: 02/09/2022

Drawing: R162_11469_001_Fig10-3_BedrockGeo_A





Legend

- Proposed Alignment
- Indicative Pole Location
- Stornoway Substation

Fault Lines (BGS 625k)

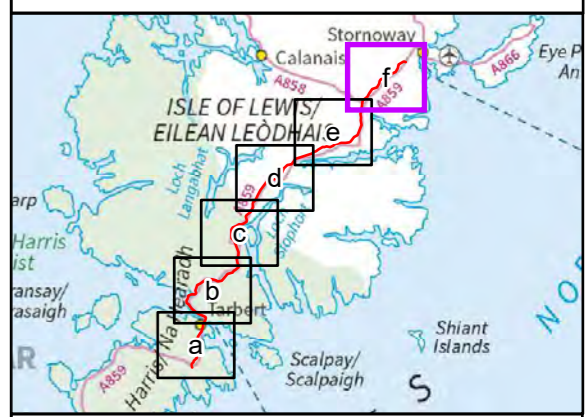
- - - Fault at rockhead
- ▲- Thrust Fault; barbs on hanging wall side

Dykes (BGS 625k)

- Lewisian Complex - Mafic Gneiss

Bedrock Geology (BGS 625k)

- Fault Zone Rocks, Unassigned - Mylonitic-Rock and Fault-Breccia
- New Red Sandstone Supergroup - Sandstone, Breccia and Conglomerate
- Lewisian Complex - Gneiss



Reproduced by permission of Ordnance Survey on behalf of HMSO. Crown copyright and database right 2022 all rights reserved. Ordnance Survey Licence number 0100022432.

Project No: LT0245
Project: Harris to Stornoway 132 kV OHL Replacement

Title: Figure 10.3f: Bedrock Geology

Drawn by: AB Date: 02/09/2022

Drawing: R162_11469_001_Fig10-3_BedrockGeo_A