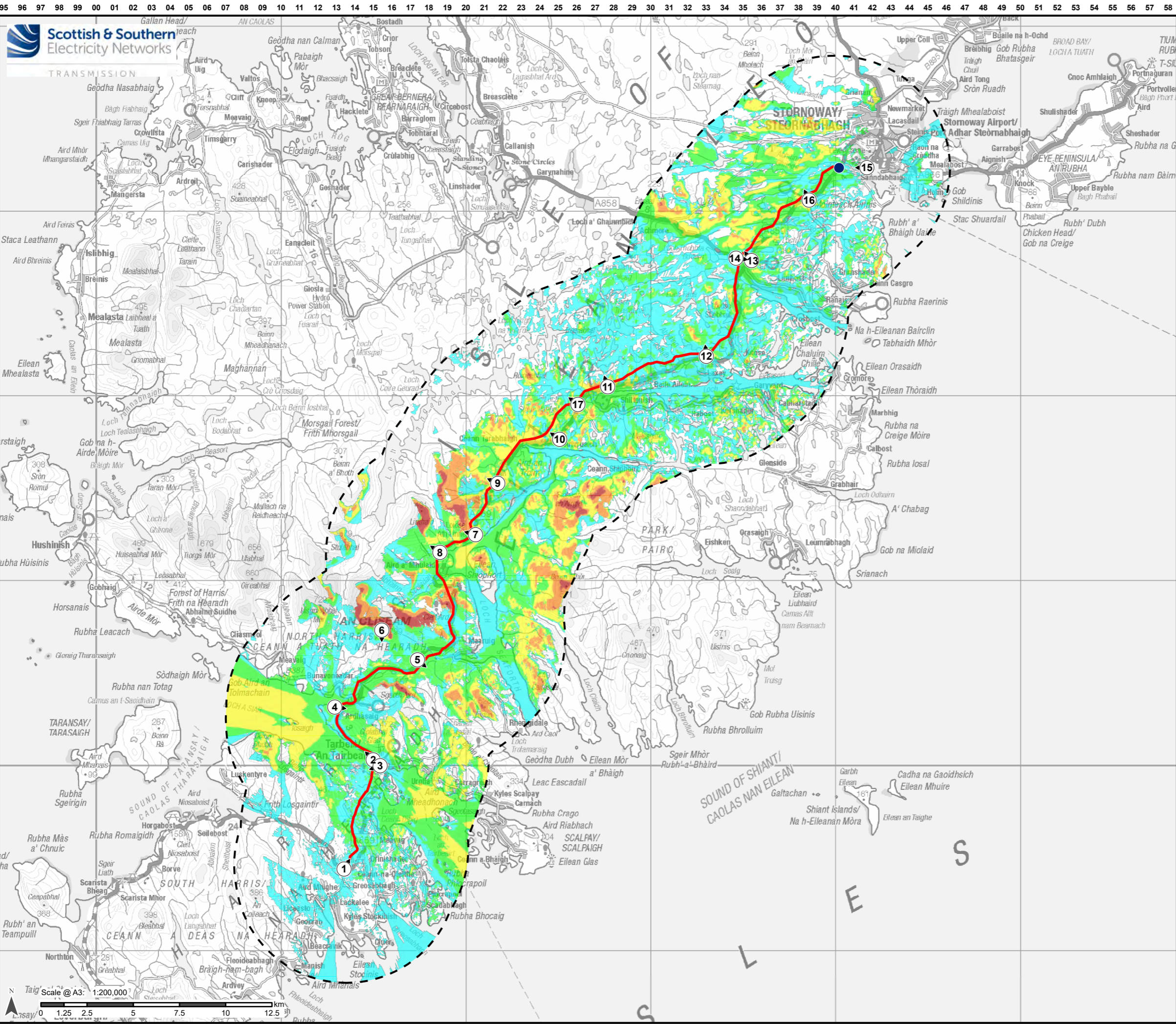


Figure 6.1: ZTV, Study Area and Viewpoint Locations

Figure 6.2: Topography and Viewpoint Locations

Figure 6.3a: Seascape Character Types, Landscape Character Types and Viewpoint Locations

Figure 6.4a-b: Landscape Designations and Classifications and Viewpoint Locations



Legend

- Proposed Alignment
- Harris 132kV Grid Supply Point
- Stornoway Substation
- 6 km SLVIA Study Area
- Viewpoints

Number of Poles Visible at Maximum Height + 20 Percent

| | |
|--|-----------|
| | 1 - 20 |
| | 21 - 50 |
| | 51 - 100 |
| | 101 - 200 |
| | 201 - 478 |

1. The ZTV analysis does not take into account the screening effect of vegetation, buildings and other surface features.
2. Predicted visibility based on a viewer eye height 2m above ground.
3. Visibility calculated using Ordnance Survey Terrain 5 DTM on a 5 m Grid.
4. Effect of earth curvature and light refraction is included.



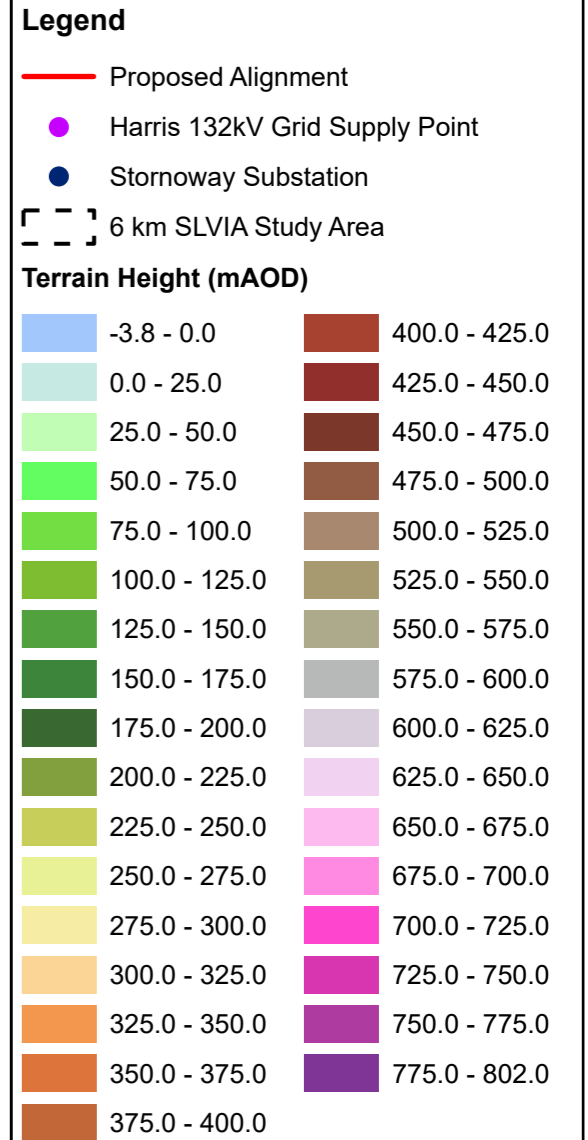
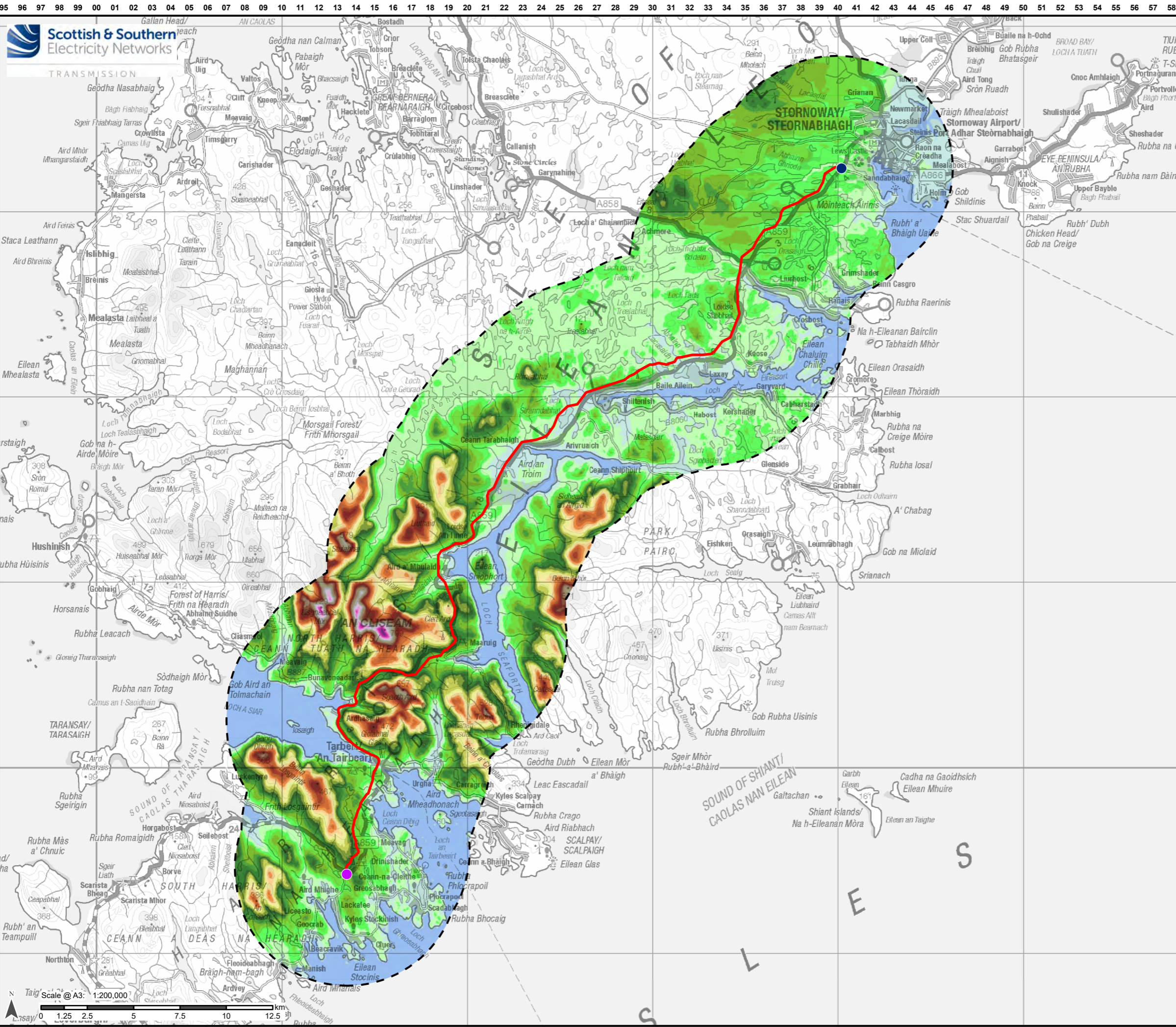
Reproduced by permission of Ordnance Survey on behalf of HMSO. Crown copyright and database right 2022 all rights reserved. Ordnance Survey Licence number 0100022432.

Project No: LT0245
Project: Harris to Stornoway 132 kV OHL Replacement

Title: Figure 6.1:
ZTV, Study Area and Viewpoint Locations

Drawn by: AB Date: 30/09/2022

Drawing: R162_11469_001_Fig-6.1_ZTV_D



Reproduced by permission of Ordnance Survey on behalf of HMSO. Crown copyright and database right 2022 all rights reserved. Ordnance Survey Licence number 0100022432.

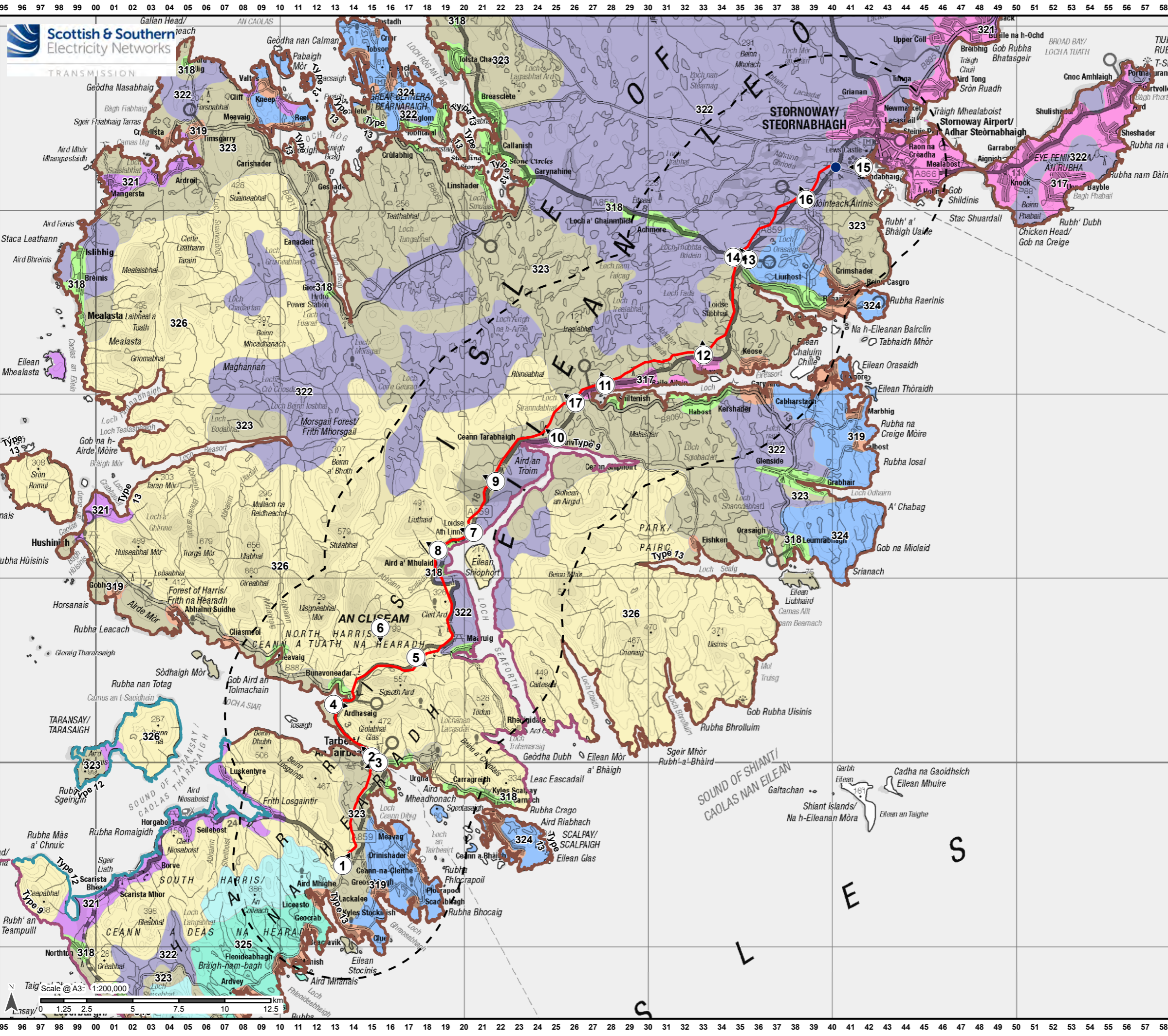
Project No: LT0245

Project: Harris to Stornoway 132 kV OHL Replacement

Title: Figure 6.2: Topography and Viewpoint Locations

Drawn by: AB Date: 29/09/2022

Drawing: R162_11469_001_Fig6-2_Topography_C



Reproduced by permission of Ordnance Survey on behalf of HMSO. Crown copyright and database right 2022 all rights reserved. Ordnance Survey Licence number 0100022432.

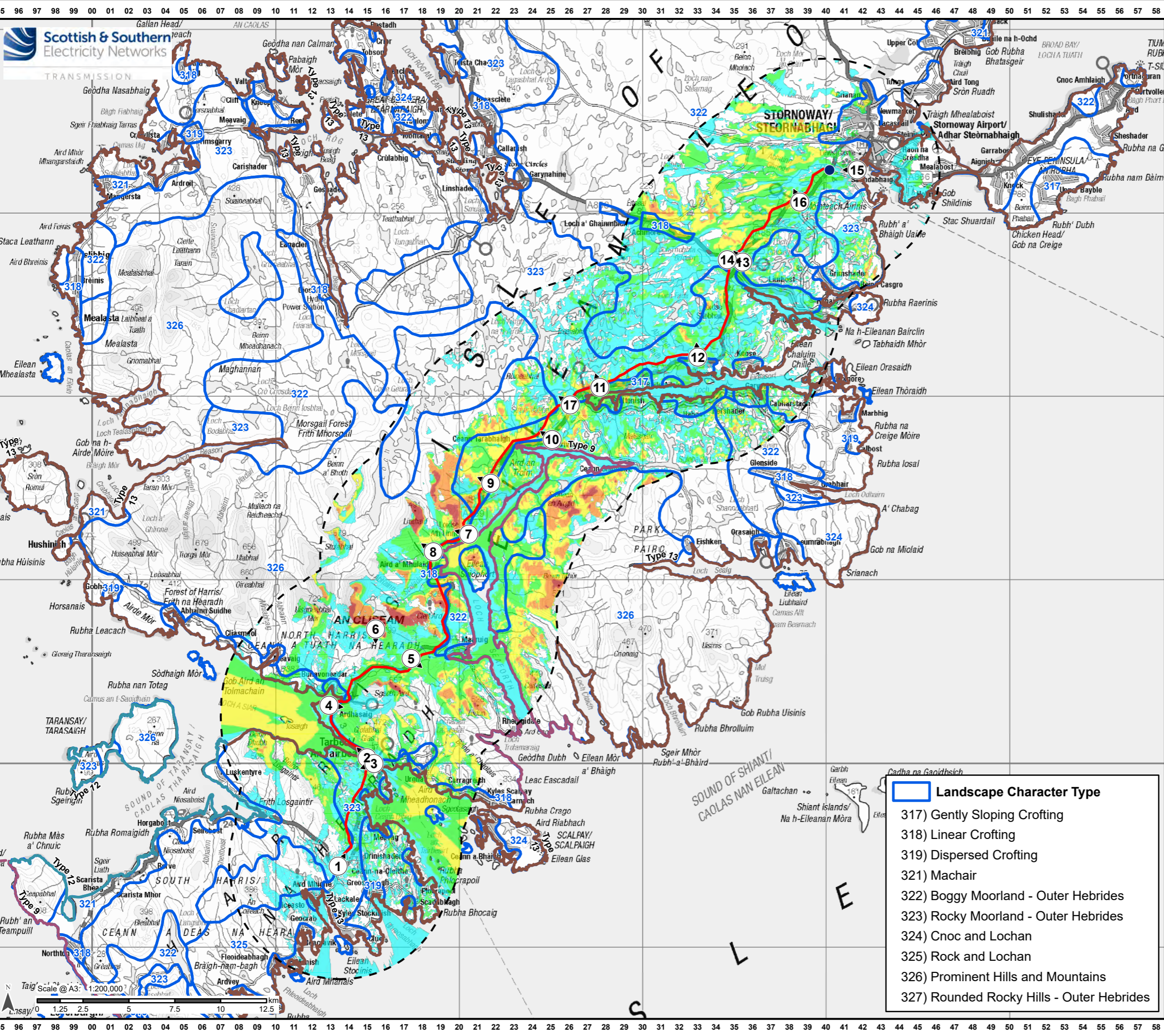
Project No: LT0245

Project: Harris to Stornoway 132 kV OHL Replacement

Title: Figure 6.3a/: Seascape Character Types, Landscape Character Types and Viewpoint Locations

Drawn by: AB Date: 14/09/2022

Drawing: R162_11469_001_Fig6-3a_SCTsAndLCTs_B



Legend

- Proposed Alignment
- Harris 132kV Grid Supply Point
- Stornoway Substation
- 6 km SLVIA Study Area
- Viewpoints

Seascape Character Type

- 9) Sounds, Narrows and Islands
- 12) Deposition Coasts of Islands
- 13) Low Rocky Island Coasts

Number of Poles Visible at Maximum Height + 20 Percent

- 1 - 20
- 21 - 50
- 51 - 100
- 101 - 200
- 201 - 478

1. The ZTV analysis does not take into account the screening effect of vegetation, buildings and other surface features.
2. Predicted visibility based on a viewer eye height 2m above ground.
3. Visibility calculated using Ordnance Survey Terrain 5 DTM on a 5 m Grid.
4. Effect of earth curvature and light refraction is included.



Landscape Character Type

- 317) Gently Sloping Crofting
- 318) Linear Crofting
- 319) Dispersed Crofting
- 321) Machair
- 322) Boggy Moorland - Outer Hebrides
- 323) Rocky Moorland - Outer Hebrides
- 324) Cnoc and Lochan
- 325) Rock and Lochan
- 326) Prominent Hills and Mountains
- 327) Rounded Rocky Hills - Outer Hebrides

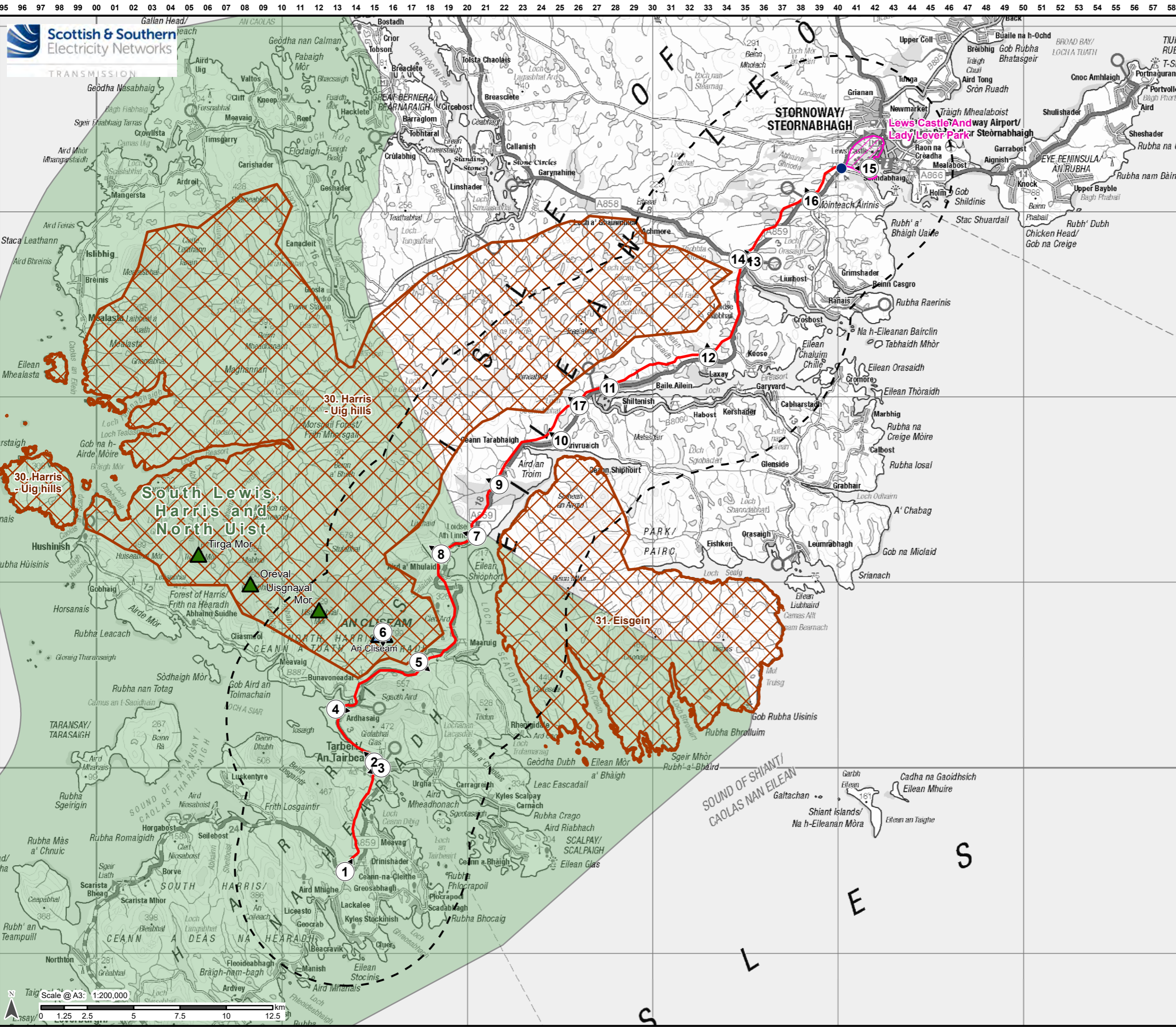
Reproduced by permission of Ordnance Survey on behalf of HMSO. Crown copyright and database right 2022 all rights reserved. Ordnance Survey Licence number 0100022432.

Project No: LT0245
 Project: Harris to Stornoway 132 kV OHL Replacement

Title: Figure 6.3a/: Seascape Character Types, Landscape Character Types, ZTV and Viewpoint Locations

Drawn by: AB Date: 30/09/2022

Drawing: R162_11469_001_Fig6-3b_SCTsAndLCTsAndZTV_C



Legend

- Proposed Alignment
- Harris 132kV Grid Supply Point
- Stornoway Substation
- 6 km SLVIA Study Area
- Viewpoints
- ▲ Grahams
- ▲ Corbetts
- South Lewis, Harris and North Uist National Scenic Area
- Wild Land Area
- Gardens and Designed Landscapes



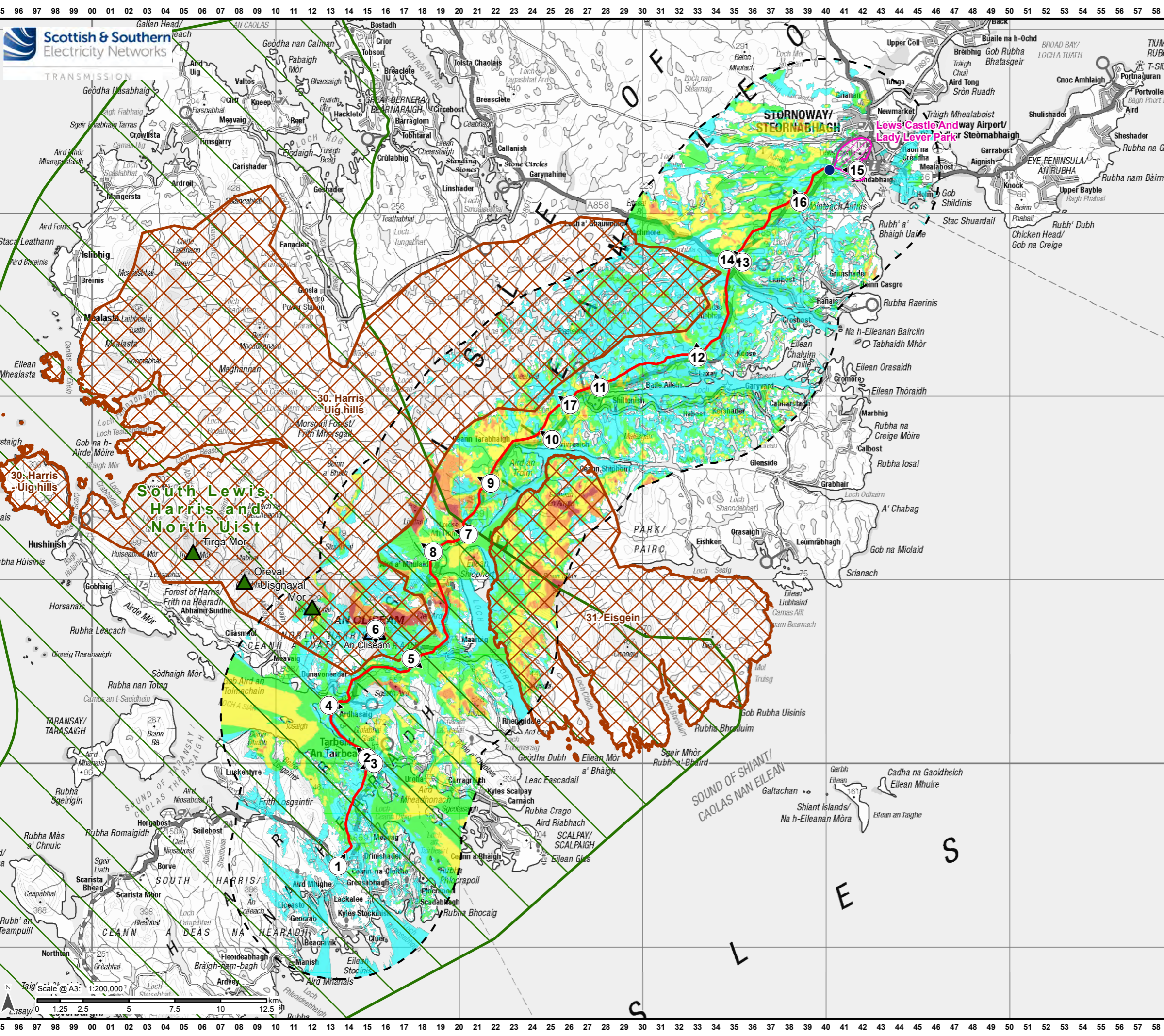
Reproduced by permission of Ordnance Survey on behalf of HMSO.
Crown copyright and database right 2022 all rights reserved.
Ordnance Survey Licence number 0100022432.

Project No: LT0245
Project: Harris to Stornoway 132 kV OHL Replacement

Title:
Figure 6.4a:
Landscape Designations and Classifications
and Viewpoint Locations

Drawn by: AB Date: 30/09/2022

Drawing: R162_11469_001_Fig6-4a_LandscapeDesig_C



Legend

- Proposed Alignment
- Harris 132kV Grid Supply Point
- Stornoway Substation
- 6 km SLVIA Study Area
- Viewpoints
- ▲ Grahams
- ▲ Corbetts
- South Lewis, Harris and North Uist National Scenic Area
- Wild Land Area
- Gardens and Designed Landscapes

Number of Poles Visible at Maximum Height + 20 Percent

| | |
|--|-----------|
| | 1 - 20 |
| | 21 - 50 |
| | 51 - 100 |
| | 101 - 200 |
| | 201 - 478 |

1. The ZTV analysis does not take into account the screening effect of vegetation, buildings and other surface features.
 2. Predicted visibility based on a viewer eye height 2m above ground.
 3. Visibility calculated using Ordnance Survey Terrain 5 DTM on a 5 m Grid.
 4. Effect of earth curvature and light refraction is included.

Reproduced by permission of Ordnance Survey on behalf of HMSO. Crown copyright and database right 2022 all rights reserved. Ordnance Survey Licence number 0100022432.

Project No: LT0245
 Project: Harris to Stornoway 132 kV OHL Replacement
 Title: Figure 6.4b: Landscape Designations and Classifications, with ZTV and Viewpoint Locations
 Drawn by: AB Date: 30/09/2022
 Drawing: R162_11469_001_Fig6-4b_LandscapeDesigAndZTV_B