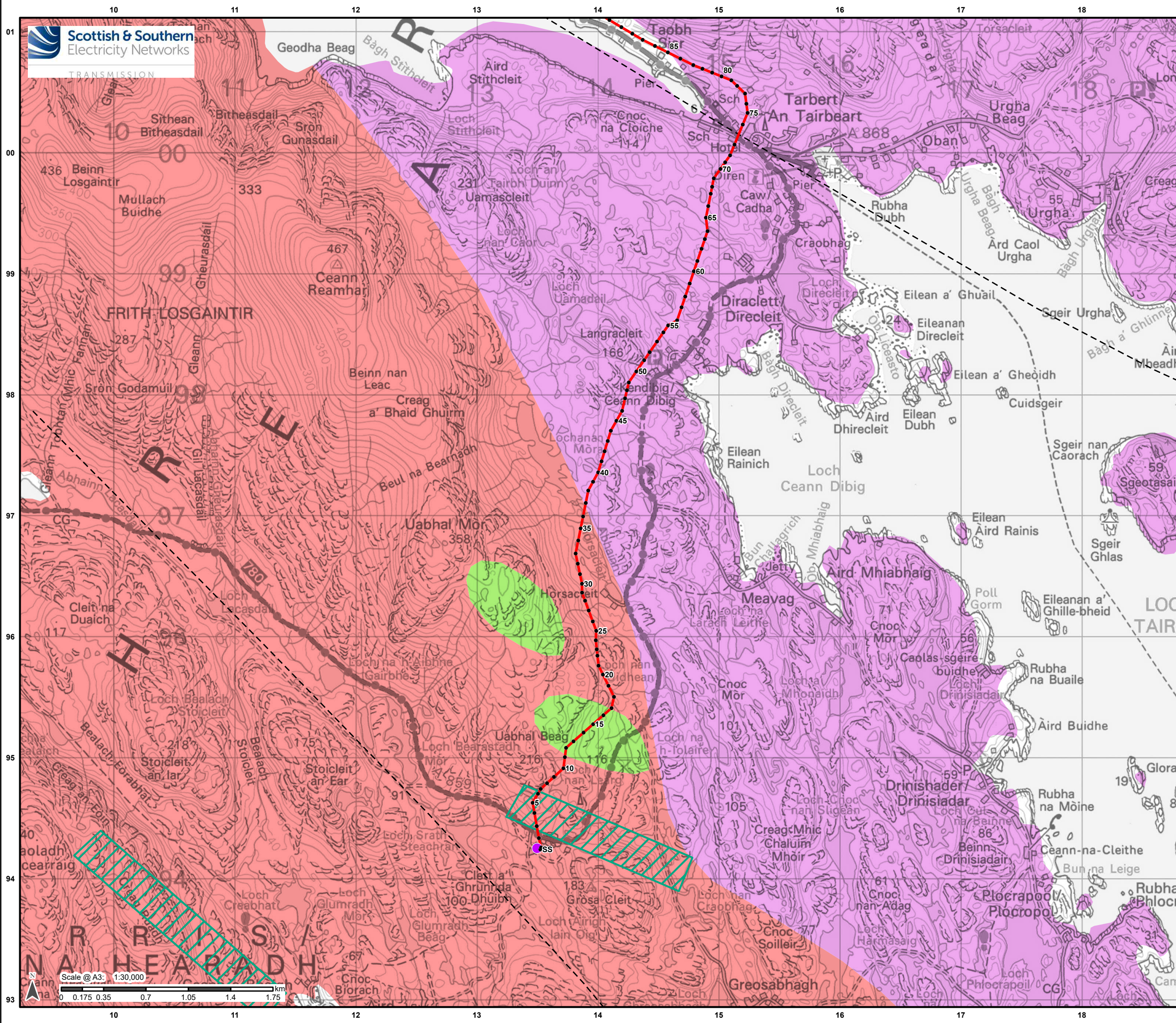


**ANNEX A – FIGURES**

**Figure 10.3.3a/a- 10.3.3a/f**





**Legend**

- Proposed Alignment
- Indicative Pole Location
- Harris 132kV Grid Supply Point

**Fault Lines (BGS 625k)**

- Fault at rockhead

**Dykes (BGS 625k)**

- Lewisian Complex - Mafic Gneiss

**Bedrock Geology (BGS 625k)**

- Unnamed Igneous Intrusion, Palaeoproterozoic - Felsic-Rock
- Unnamed Igneous Intrusion, Palaeoproterozoic - Mafic Igneous-Rock
- Lewisian Complex - Gneiss

Reproduced by permission of Ordnance Survey on behalf of HMSO. Crown copyright and database right 2022 all rights reserved. Ordnance Survey Licence number 0100022432.

Project No: LT0245

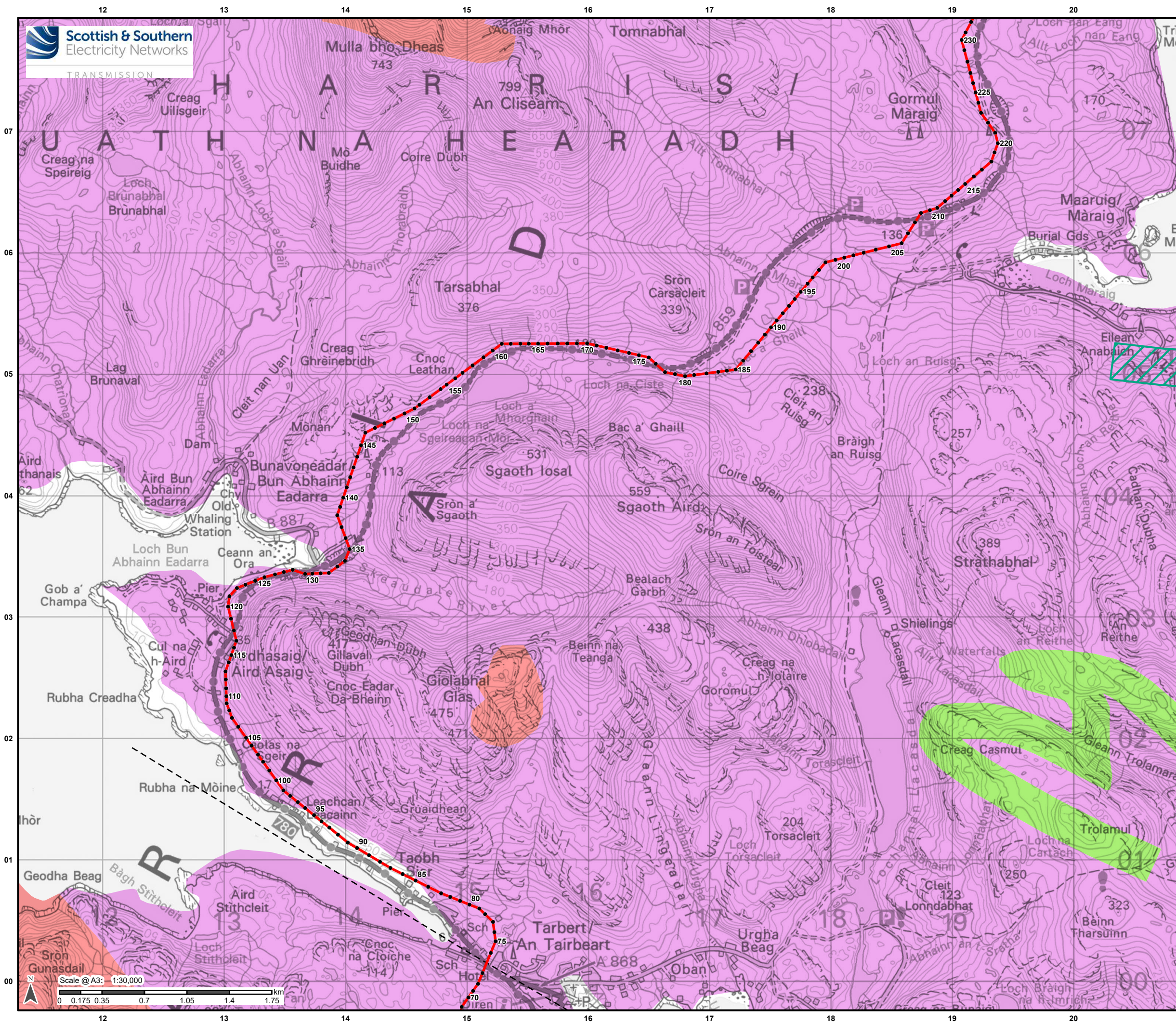
Project: Harris to Stornoway 132 kV OHL Replacement

Title: Figure 10.3.3a/a: Peat Landslide Hazard and Risk Assessment: Bedrock Geology

Drawn by: AB Date: 31/08/2022

Drawing: R162\_11469\_001\_Fig10-3-3a\_BedrockGeo\_A





### Legend

— Proposed Alignment

• Indicative Pole Location

#### Fault Lines (BGS 625k)

--- Fault at rockhead

#### Dykes (BGS 625k)

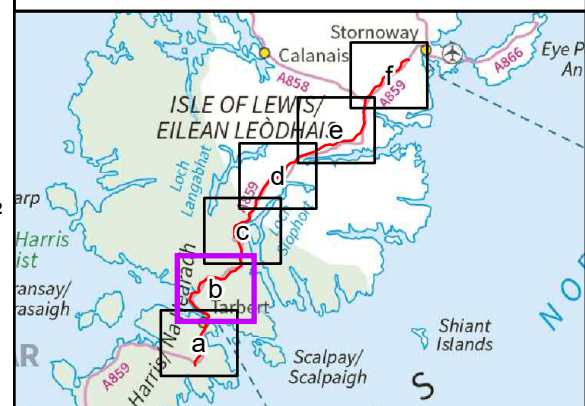
▨ Lewisian Complex - Mafic Gneiss

#### Bedrock Geology (BGS 625k)

■ Unnamed Igneous Intrusion,  
Palaeoproterozoic - Felsic-Rock

■ Unnamed Igneous Intrusion,  
Palaeoproterozoic - Mafic Igneous-  
Rock

■ Lewisian Complex - Gneiss



Reproduced by permission of Ordnance Survey on behalf of HMSO.  
Crown copyright and database right 2022 all rights reserved.  
Ordnance Survey Licence number 0100022432.

Project No: LT0245

Project: Harris to Stornoway 132 kV OHL Replacement

Title:  
Figure 10.3.3a/b:  
Peat Landslide Hazard and Risk Assessment:  
Bedrock Geology

Drawn by: AB

Date: 31/08/2022

Drawing: R162\_11469\_001\_Fig10-3-3a\_BedrockGeo\_A



## Legend

Proposed Alignment

Indicative Pole Location

### Fault Lines (BGS 625k)

--- Fault at rockhead

Thrust Fault; barbs on hanging wall side

### Dykes (BGS 625k)

Unnamed Igneous Intrusion,  
Palaeoproterozoic - Mafic Igneous-Rock

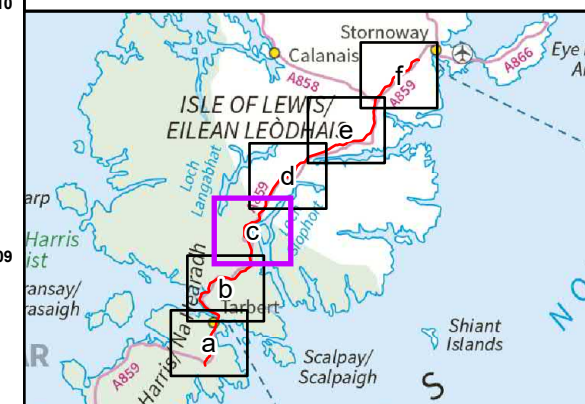
### Bedrock Geology (BGS 625k)

Fault Zone Rocks, Unassigned -  
Mylonitic-Rock and Fault-Breccia

Unnamed Igneous Intrusion,  
Palaeoproterozoic - Felsic-Rock

Lewisian Complex - Mafic Gneiss

Lewisian Complex - Gneiss



Reproduced by permission of Ordnance Survey on behalf of HMSO.  
Crown copyright and database right 2022 all rights reserved.  
Ordnance Survey Licence number 0100022432.

Project No: LT0245

Project: Harris to Stornoway 132 kV OHL Replacement

Title:  
Figure 10.3.3a/c:  
Peat Landslide Hazard and Risk Assessment:  
Bedrock Geology

Drawn by: AB

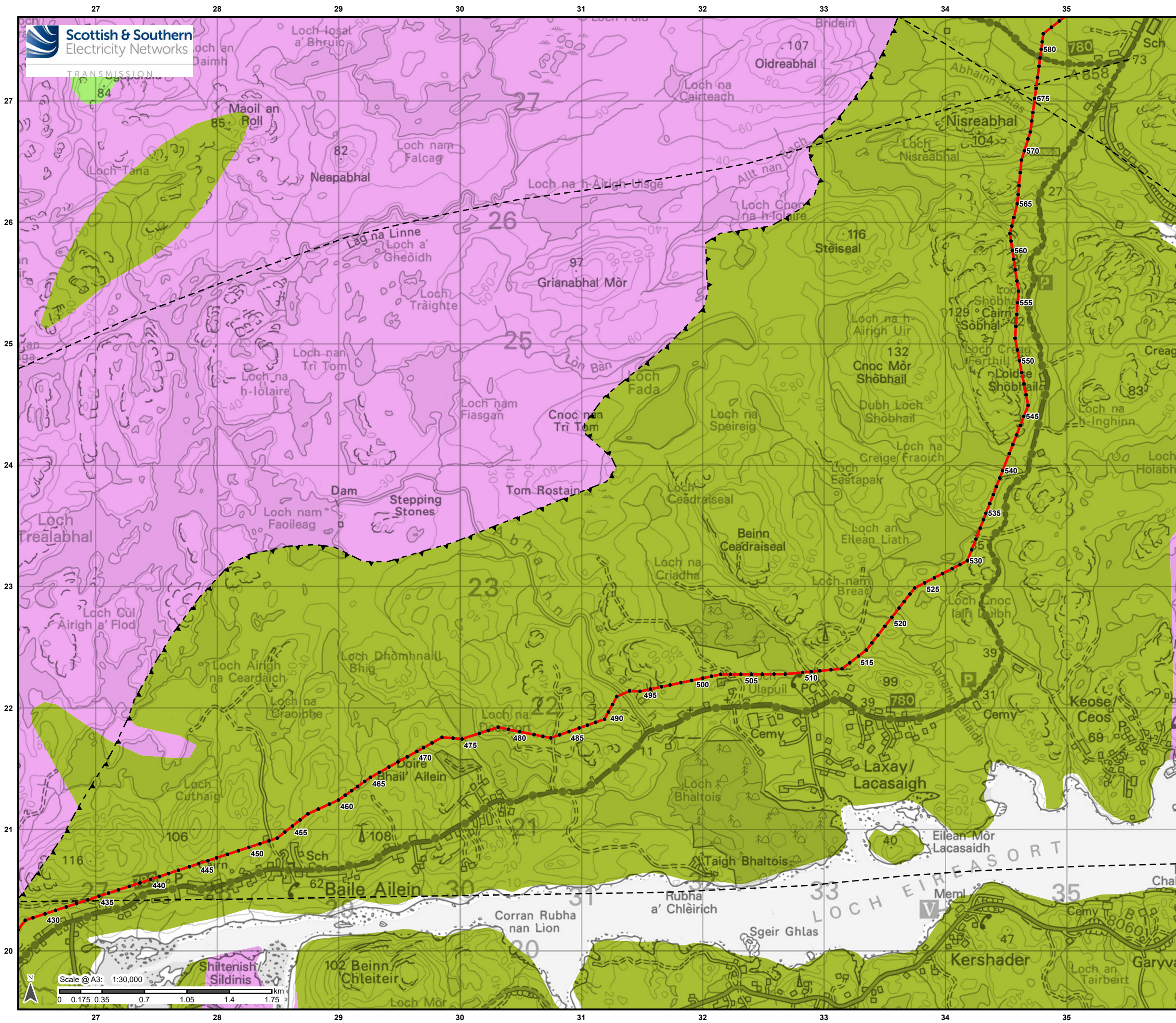
Date: 31/08/2022

Drawing: R162\_11469\_001\_Fig10-3-3a\_BedrockGeo\_A









**Legend**

- Proposed Alignment
- Indicative Pole Location

**Fault Lines (BGS 625k)**

- Fault at rockhead
- Thrust Fault; barbs on hanging wall side

**Bedrock Geology (BGS 625k)**

- Fault Zone Rocks, Unassigned - Mylonitic-Rock and Fault-Breccia
- Unnamed Igneous Intrusion, Palaeoproterozoic - Mafic Igneous-Rock
- Lewisian Complex - Gneiss

Reproduced by permission of Ordnance Survey on behalf of HMSO. Crown copyright and database right 2022 all rights reserved. Ordnance Survey Licence number 0100022432.

Project No: LT0245

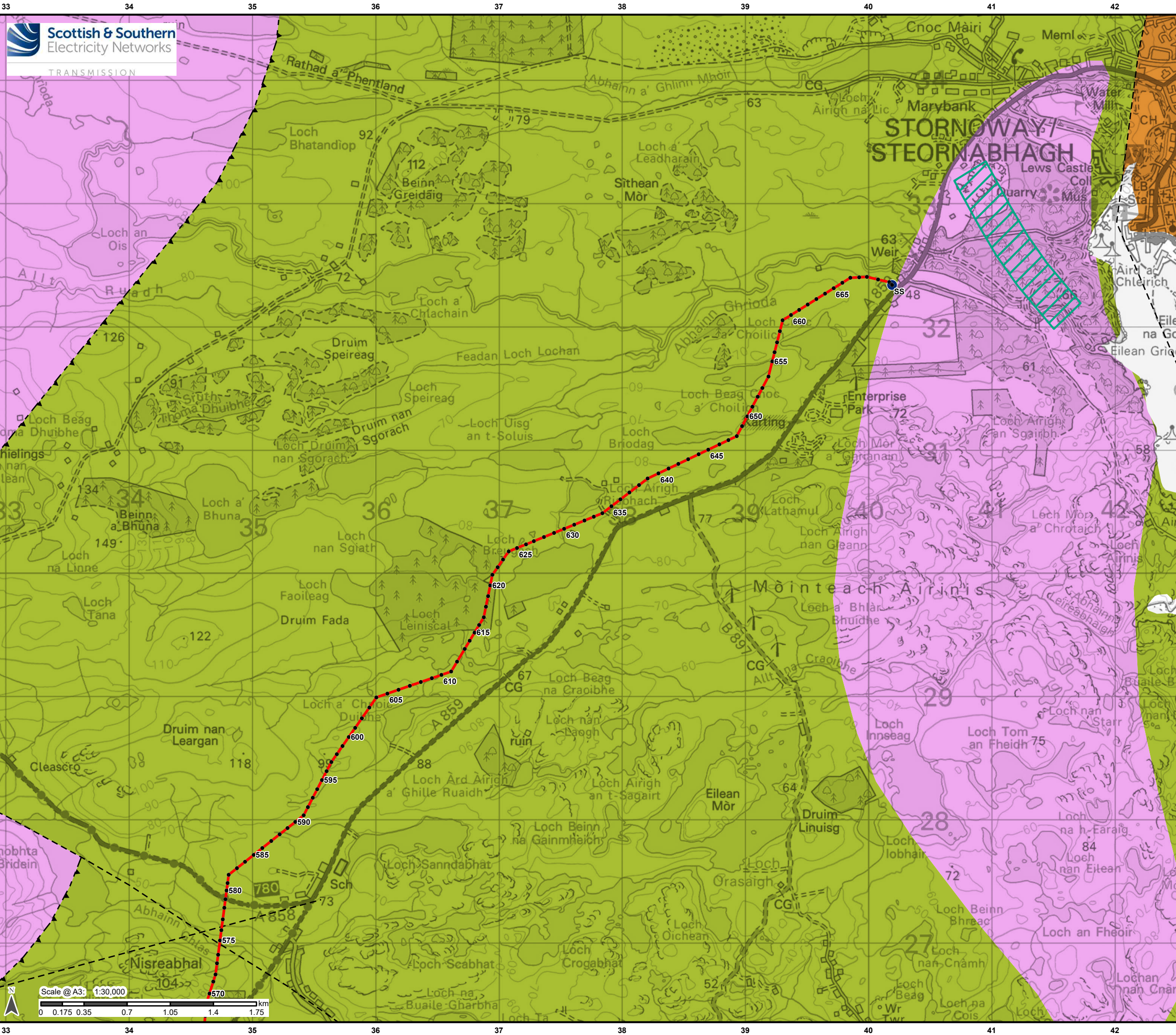
Project: Harris to Stornoway 132 kV OHL Replacement

Title: Figure 10.3.3a/e: Peat Landslide Hazard and Risk Assessment: Bedrock Geology

Drawn by: AB Date: 31/08/2022

Drawing: R162\_11469\_001\_Fig10-3-3a\_BedrockGeo\_A





**Legend**

Proposed Alignment

Indicative Pole Location

Stornoway Substation

**Fault Lines (BGS 625k)**

Fault at rockhead

Thrust Fault; barbs on hanging wall side

**Dykes (BGS 625k)**

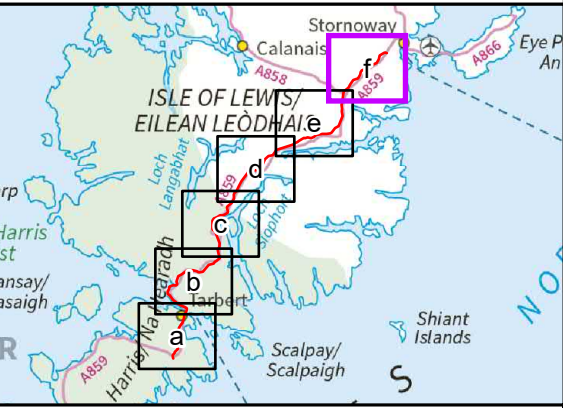
Lewisian Complex - Mafic Gneiss

**Bedrock Geology (BGS 625k)**

Fault Zone Rocks, Unassigned - Mylonitic-Rock and Fault-Breccia

New Red Sandstone Supergroup - Sandstone, Breccia and Conglomerate

Lewisian Complex - Gneiss



Reproduced by permission of Ordnance Survey on behalf of HMSO.  
Crown copyright and database right 2022 all rights reserved.  
Ordnance Survey Licence number 0100022432.

Project No: LT0245  
Project: Harris to Stornoway 132 kV OHL Replacement

Title:  
Figure 10.3.3a/f:  
Peat Landslide Hazard and Risk Assessment:  
Bedrock Geology

Drawn by: AB Date: 31/08/2022

Drawing: R162\_11469\_001\_Fig10-3-3a\_BedrockGeo\_A