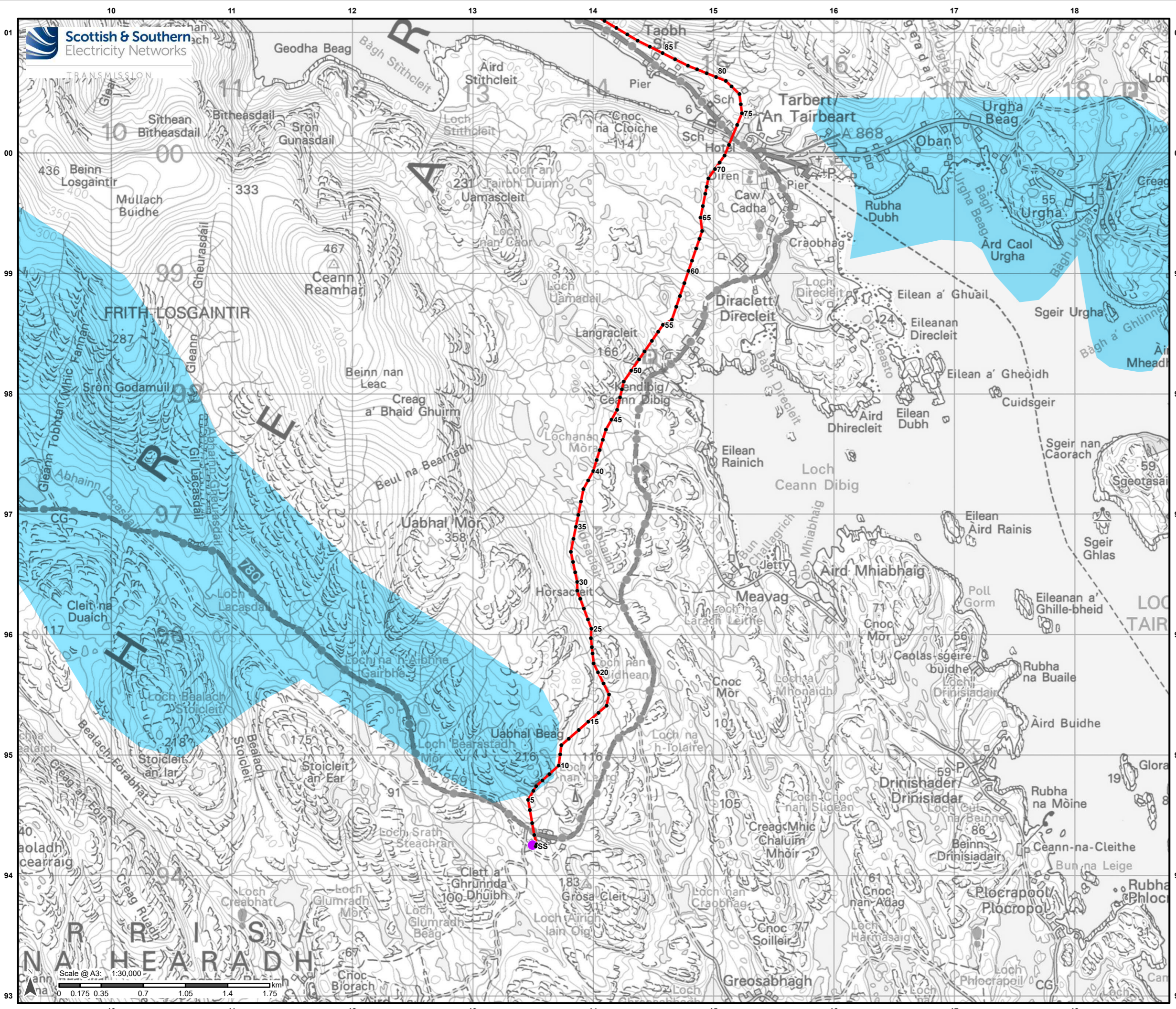


ANNEX A – FIGURES

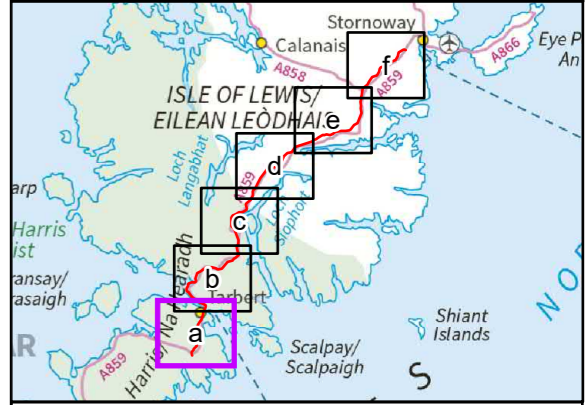
Figure 10.3.3b/a- 10.3.3b/f



- Legend**
- Proposed Alignment
 - Indicative Pole Location
 - Harris 132kV Grid Supply Point

Superficial Geology (BGS 625k)

- Till-Diamicton



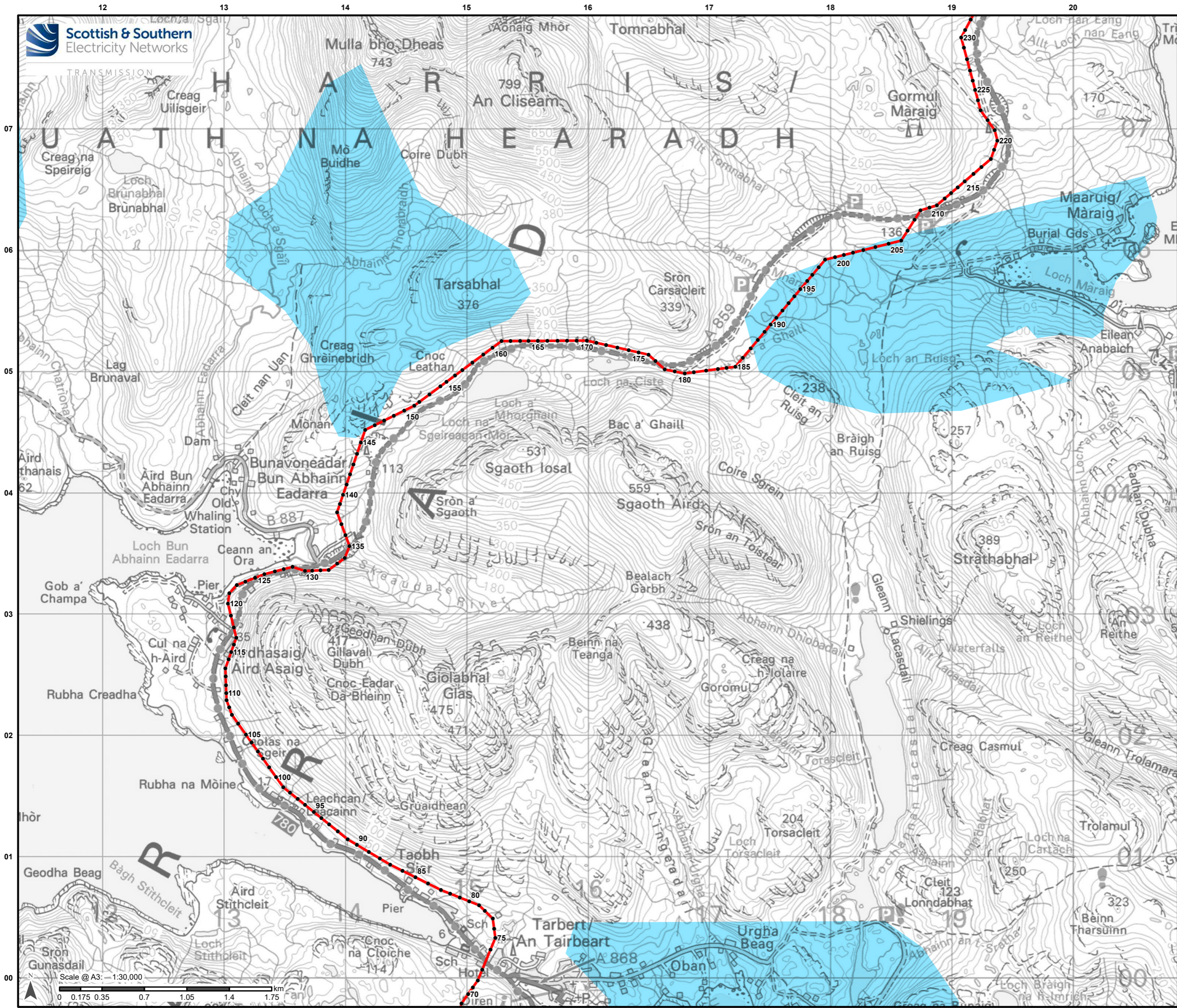
Reproduced by permission of Ordnance Survey on behalf of HMSO. Crown copyright and database right 2022 all rights reserved. Ordnance Survey Licence number 0100022432.

Project No: LT0245
Project: Harris to Stornoway 132 kV OHL Replacement

Title:
Figure 10.3.3b/a:
Peat Landslide Hazard and Risk Assessment:
Superficial Geology

Drawn by: AB Date: 31/08/2022

Drawing: R162_11469_001_Fig10-3-3b_SuperficialGeo_A

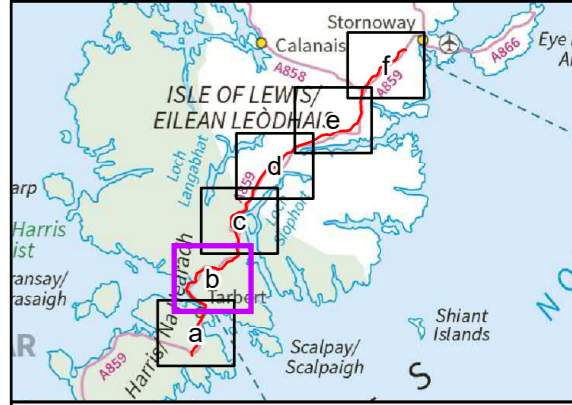


Legend

- Proposed Alignment
- Indicative Pole Location

Superficial Geology (BGS 625k)

- Till-Diamicton



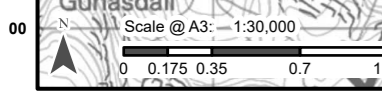
Reproduced by permission of Ordnance Survey on behalf of HMSO. Crown copyright and database right 2022 all rights reserved. Ordnance Survey Licence number 0100022432.

Project No: LT0245
Project: Harris to Stornoway 132 kV OHL Replacement

Title: Figure 10.3.3b/b: Peat Landslide Hazard and Risk Assessment: Superficial Geology

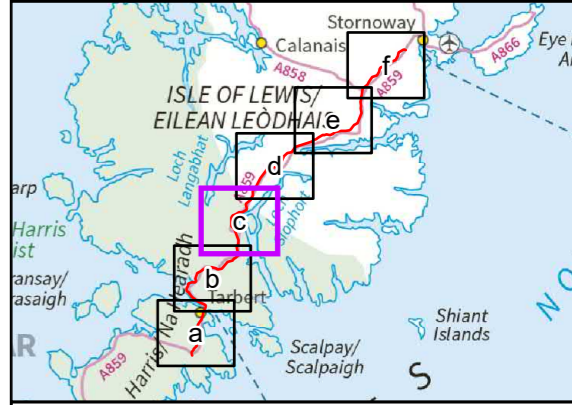
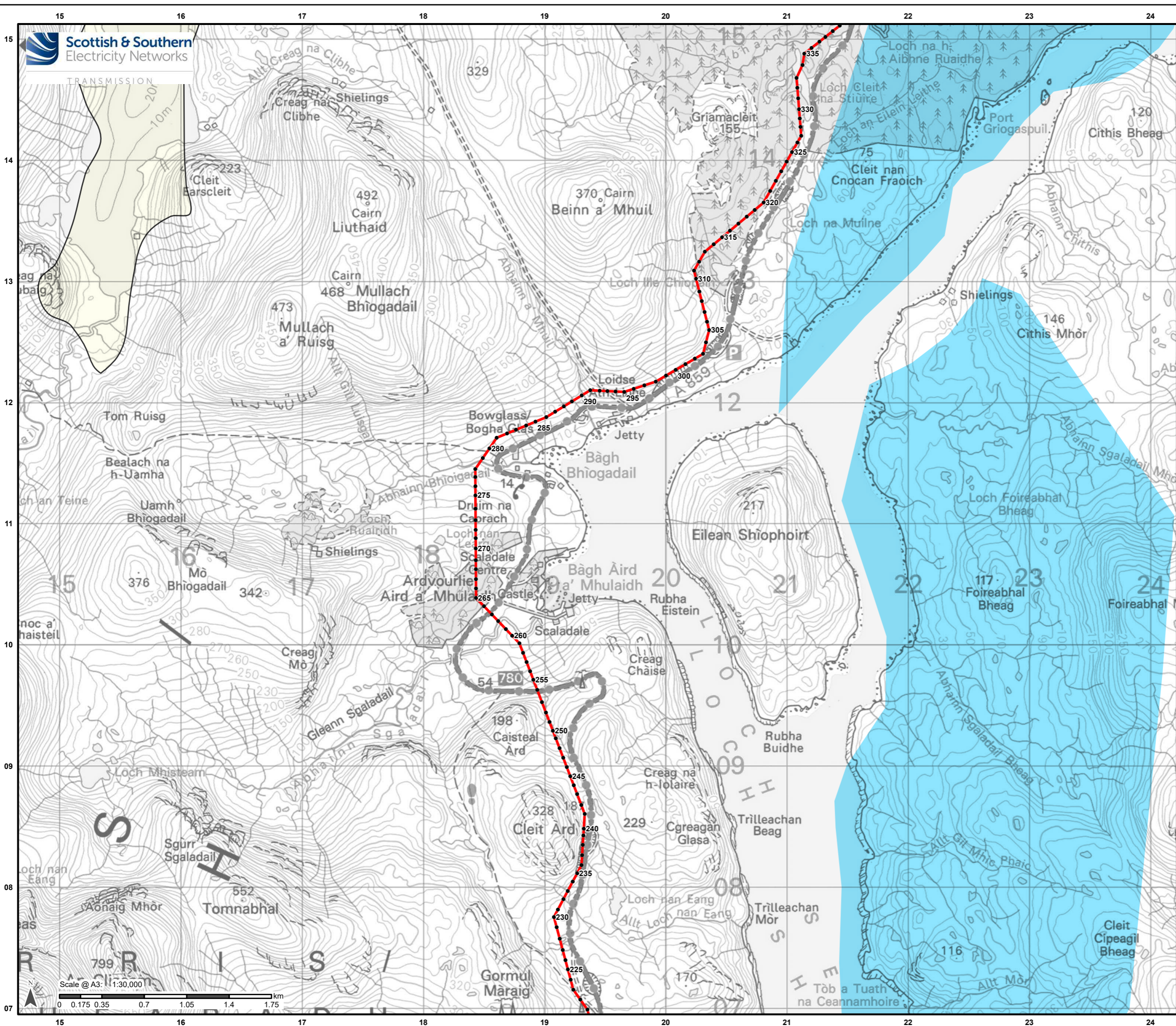
Drawn by: AB Date: 31/08/2022

Drawing: R162_11469_001_Fig10-3-3b_SuperficialGeo_A



Legend

- Proposed Alignment
- Indicative Pole Location
- Superficial Geology (BGS 625k)**
- Till-Diamicton
- Drift Geology Not Mapped-Unknown Lithology



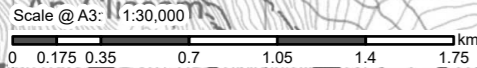
Reproduced by permission of Ordnance Survey on behalf of HMSO. Crown copyright and database right 2022 all rights reserved. Ordnance Survey Licence number 0100022432.

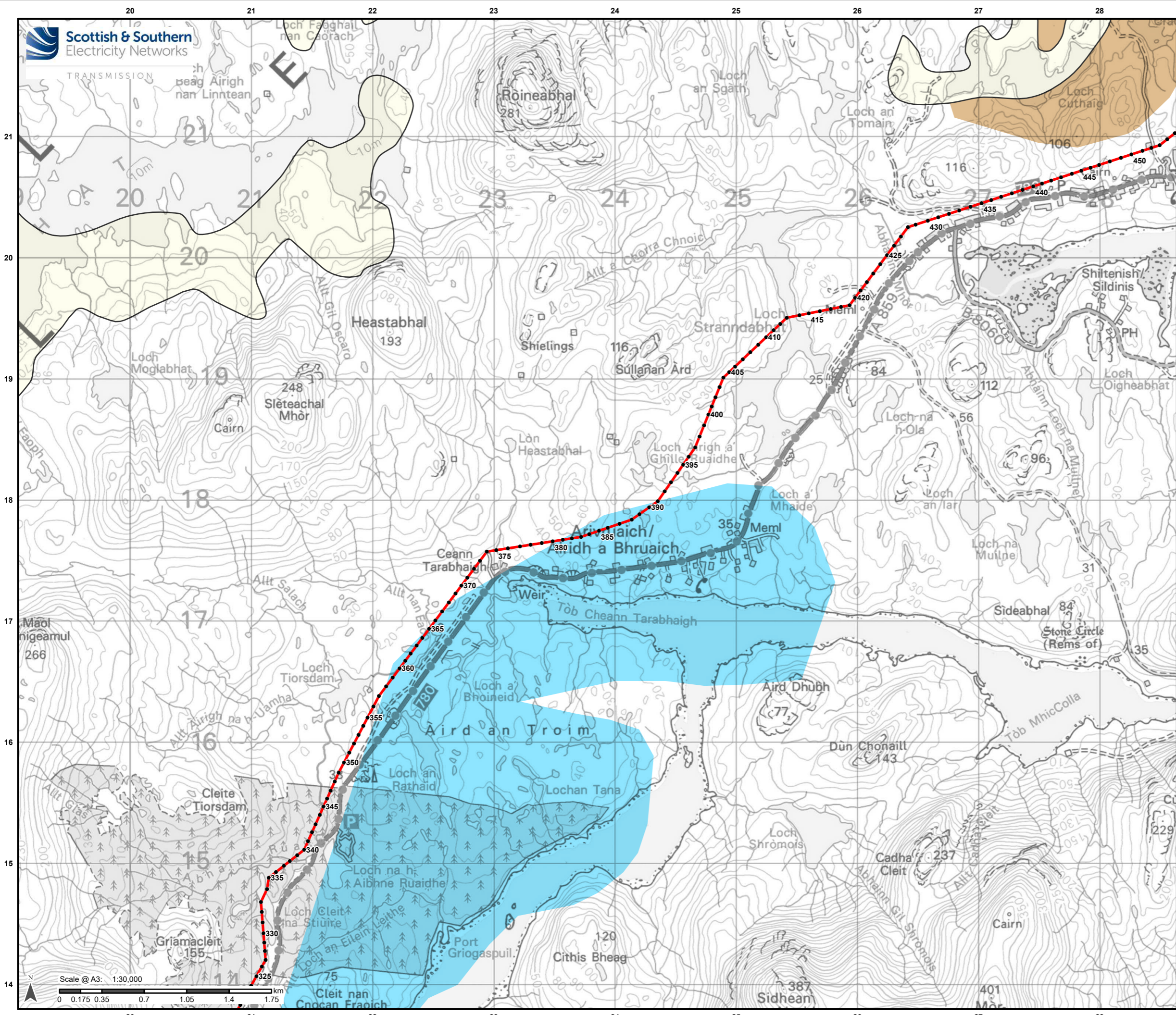
Project No: LT0245
Project: Harris to Stornoway 132 kV OHL Replacement

Title: Figure 10.3.3b/c:
Peat Landslide Hazard and Risk Assessment:
Superficial Geology

Drawn by: AB Date: 31/08/2022

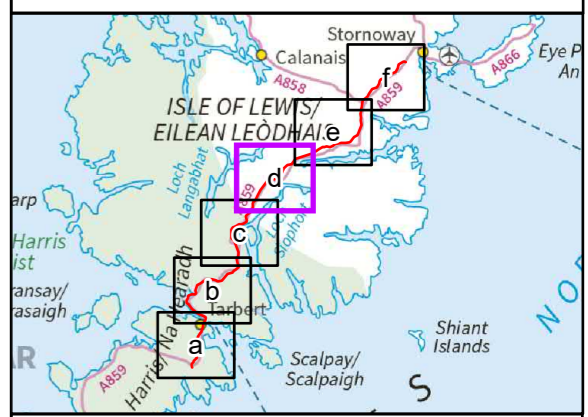
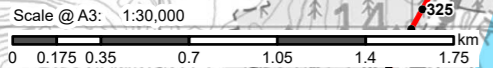
Drawing: R162_11469_001_Fig10-3-3b_SuperficialGeo_A





Legend

- Proposed Alignment
- Indicative Pole Location
- Superficial Geology (BGS 625k)**
- Peat-Peat
- Till-Diamicton
- Drift Geology Not Mapped-Unknown Lithology



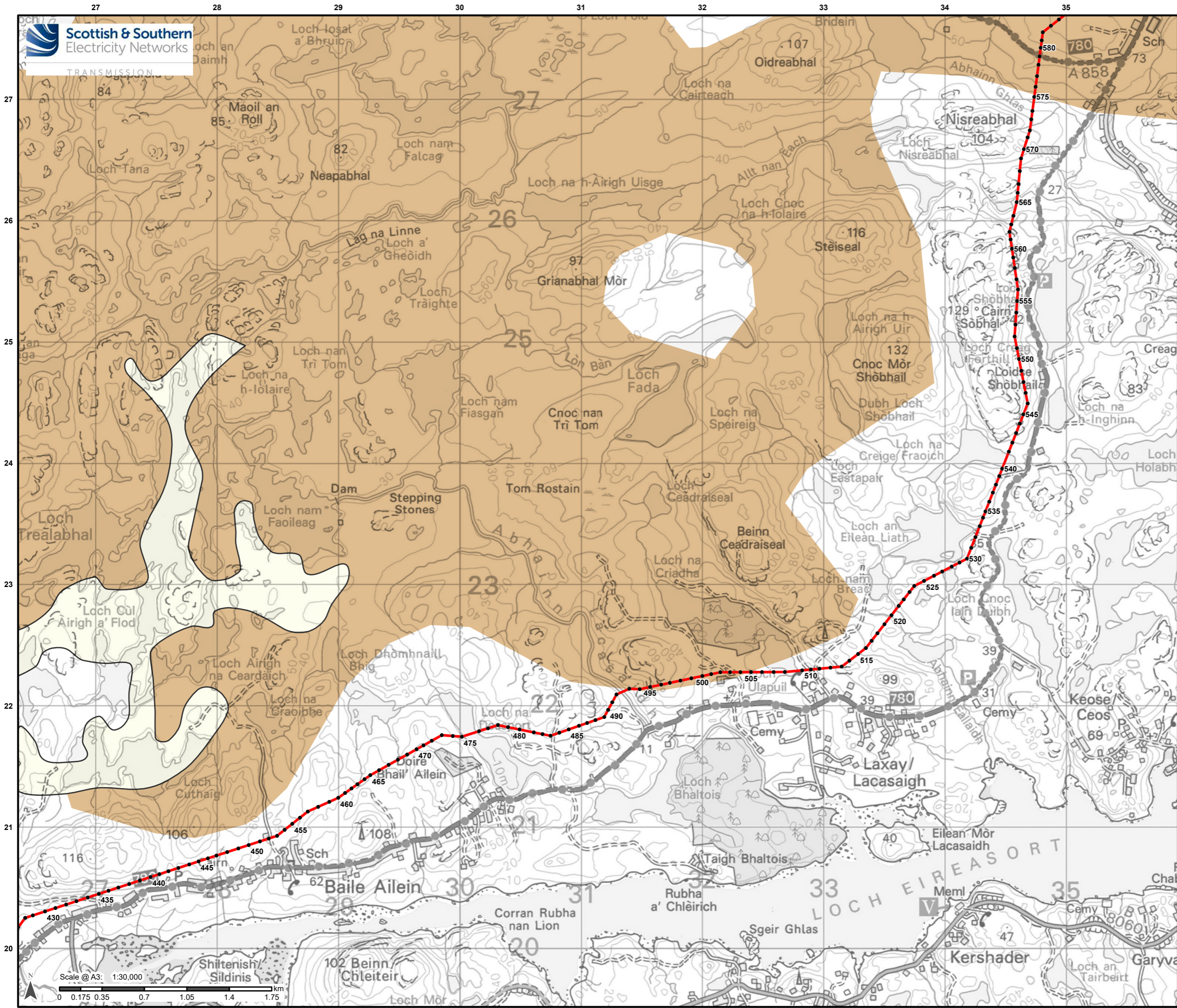
Reproduced by permission of Ordnance Survey on behalf of HMSO. Crown copyright and database right 2022 all rights reserved. Ordnance Survey Licence number 0100022432.

Project No: LT0245
Project: Harris to Stornoway 132 kV OHL Replacement

Title: Figure 10.3.3b/d: Peat Landslide Hazard and Risk Assessment: Superficial Geology

Drawn by: AB Date: 31/08/2022

Drawing: R162_11469_001_Fig10-3-3b_SuperficialGeo_A

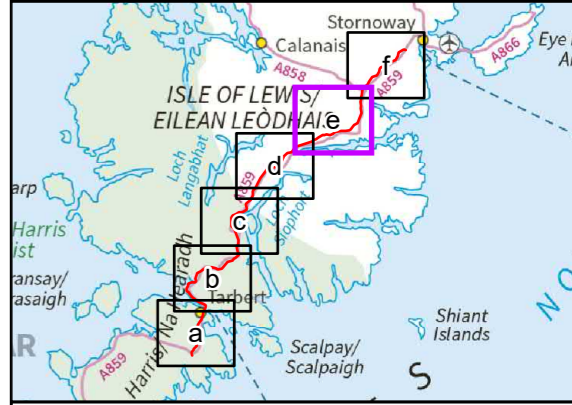


Legend

- Proposed Alignment
- Indicative Pole Location

Superficial Geology (BGS 625k)

- Peat-Peat
- Drift Geology Not Mapped-Unknown Lithology



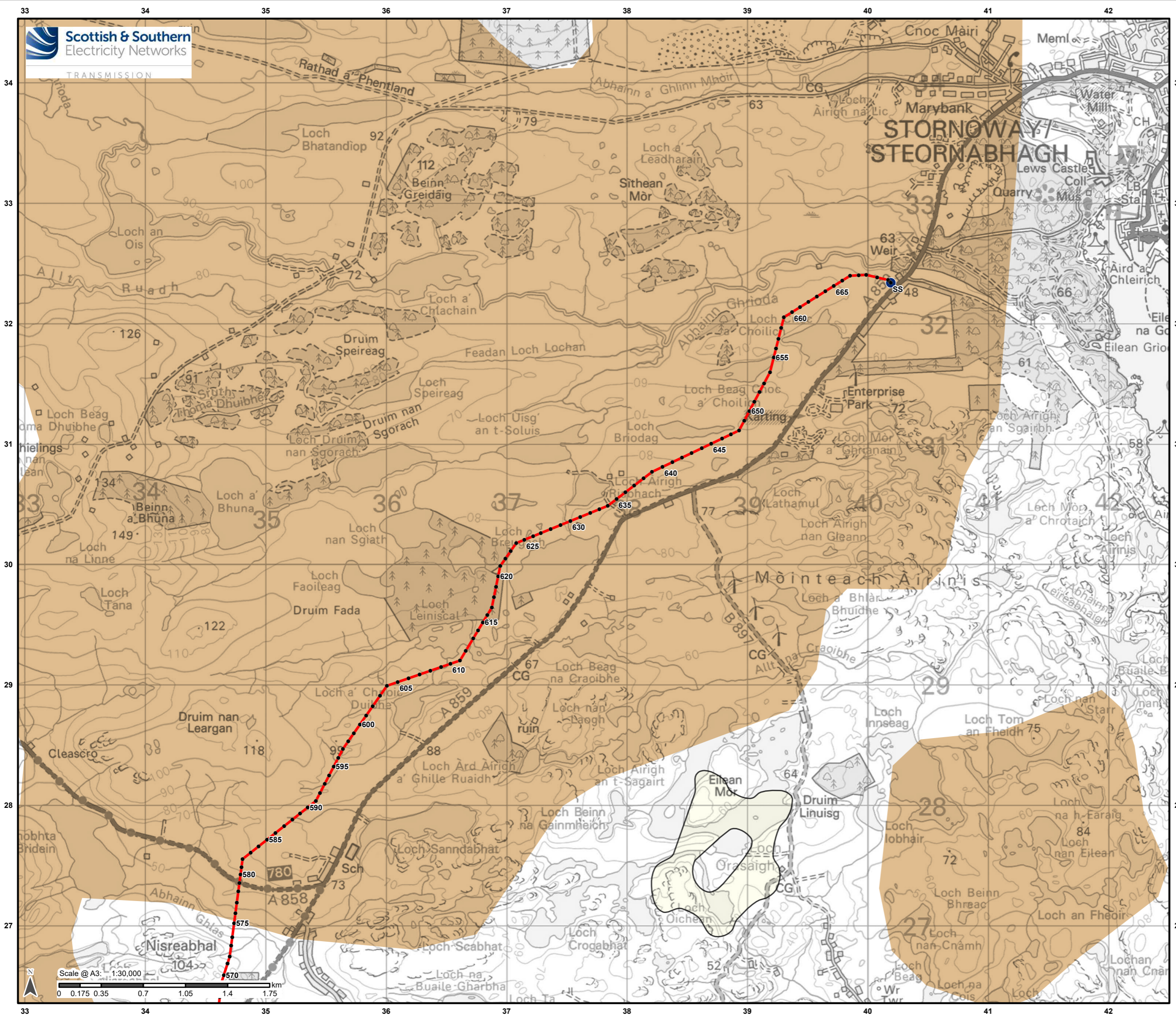
Reproduced by permission of Ordnance Survey on behalf of HMSO.
Crown copyright and database right 2022 all rights reserved.
Ordnance Survey Licence number 0100022432.

Project No: LT0245
Project: Harris to Stornoway 132 kV OHL Replacement

Title: Figure 10.3.3b/e:
Peat Landslide Hazard and Risk Assessment:
Superficial Geology

Drawn by: AB Date: 31/08/2022

Drawing: R162_11469_001_Fig10-3-3b_SuperficialGeo_A

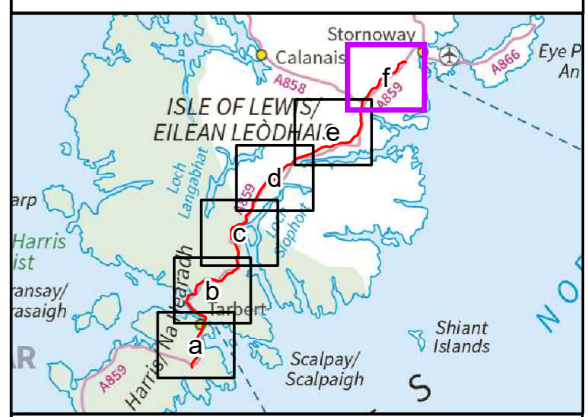


Legend

- Proposed Alignment
- Indicative Pole Location
- Stornoway Substation

Superficial Geology (BGS 625k)

- Peat-Peat
- Drift Geology Not Mapped-Unknown Lithology



Reproduced by permission of Ordnance Survey on behalf of HMSO. Crown copyright and database right 2022 all rights reserved. Ordnance Survey Licence number 0100022432.

Project No: LT0245
Project: Harris to Stornoway 132 kV OHL Replacement

Title: Figure 10.3.3b/f: Peat Landslide Hazard and Risk Assessment: Superficial Geology

Drawn by: AB Date: 31/08/2022

Drawing: R162_11469_001_Fig10-3-3b_SuperficialGeo_A