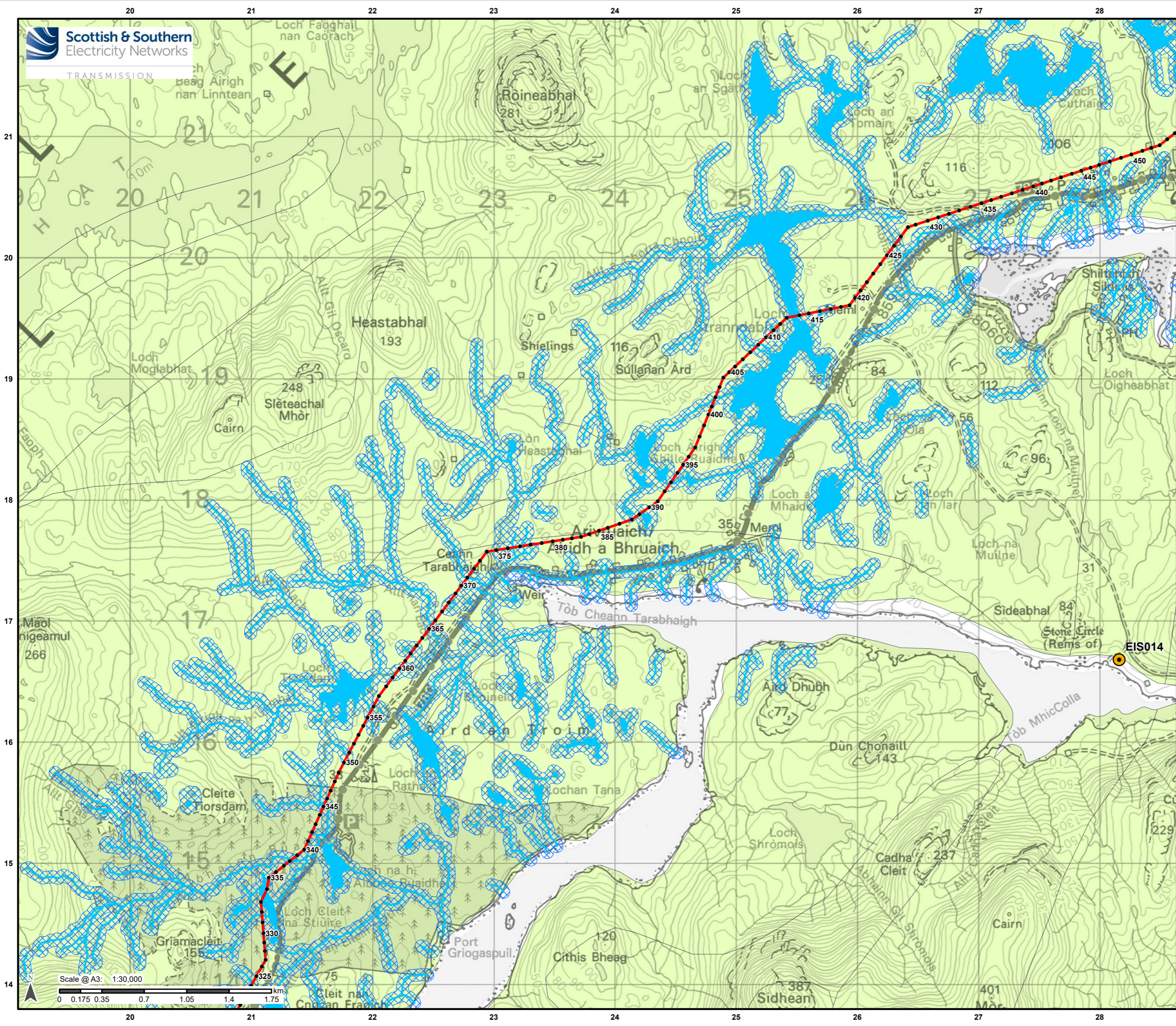


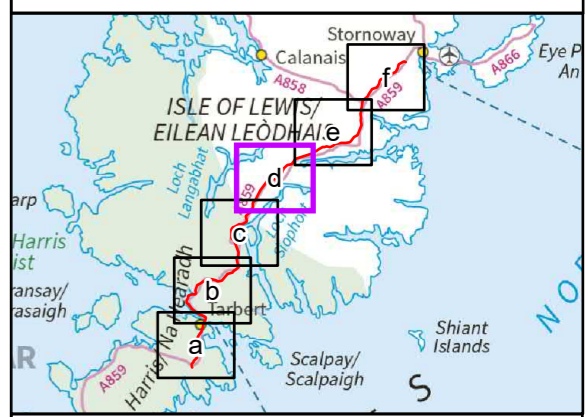
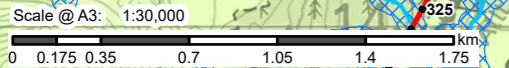
ANNEX A – FIGURES

Figure 10.3.4d-10.3.4f



Legend

- Proposed Alignment
- Indicative Pole Location
- Private Water Supply
- Watercourse
- Waterbody
- Surfacewater 50m Buffer
- Low productivity aquifer



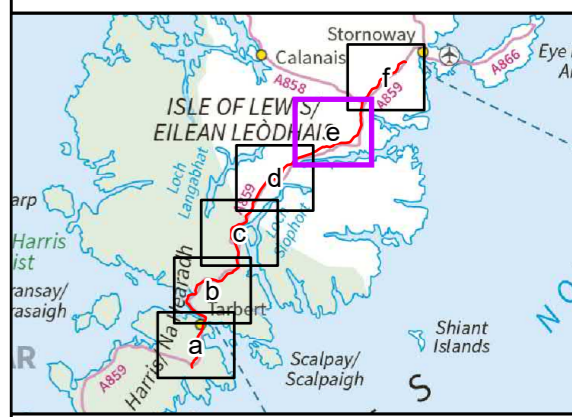
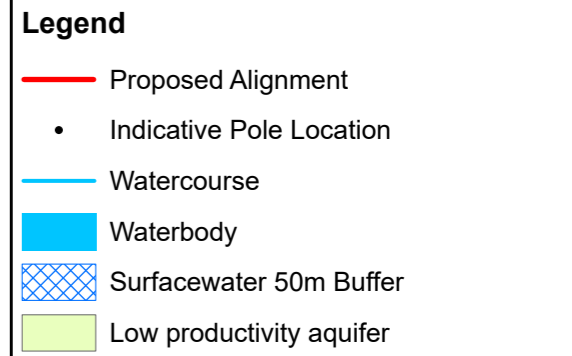
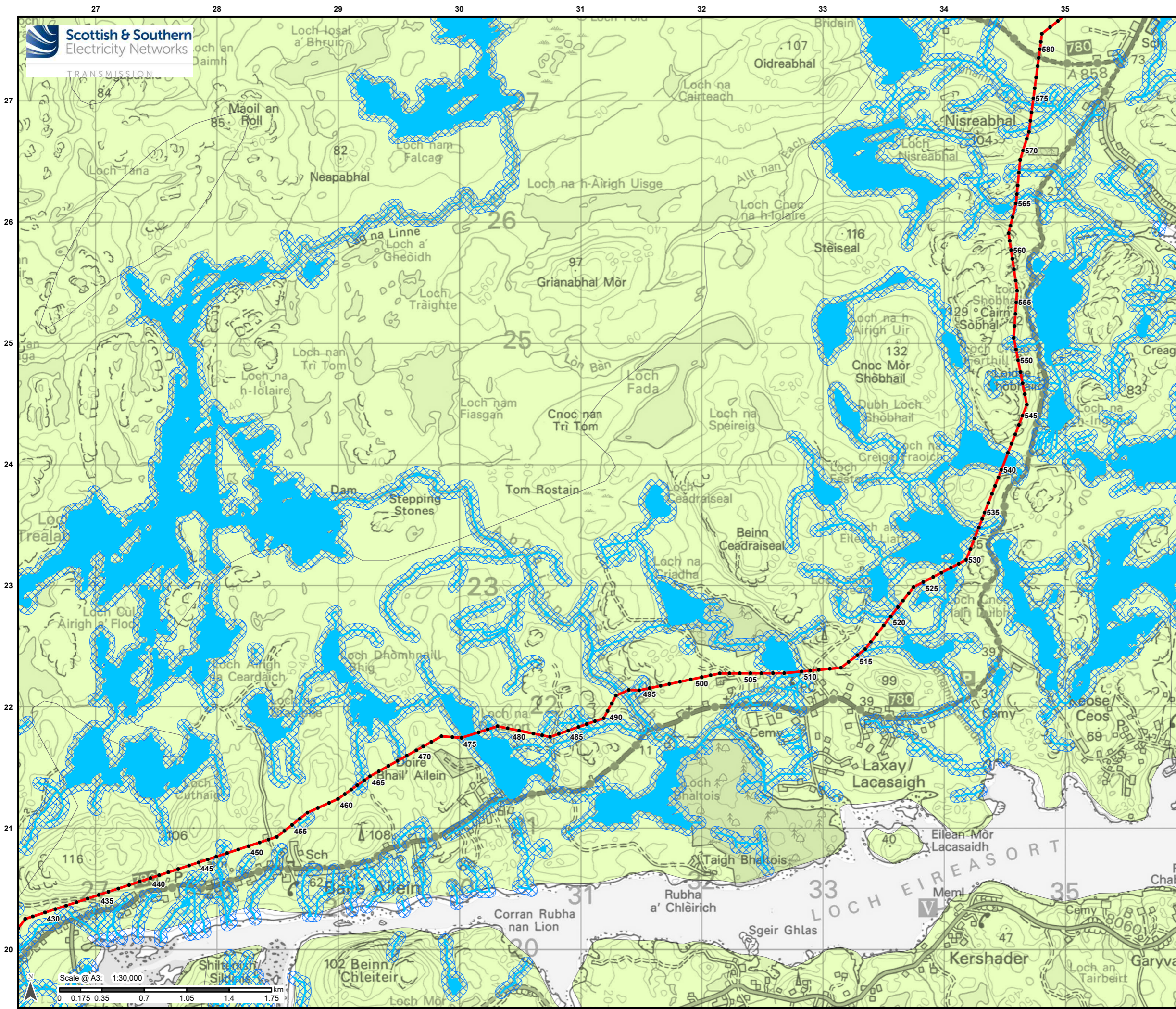
Reproduced by permission of Ordnance Survey on behalf of HMSO. Crown copyright and database right 2022 all rights reserved. Ordnance Survey Licence number 0100022432.

Project No: LT0245
Project: Harris to Stornoway 132 kV OHL Replacement

Title: Figure 10.3.4d: Peat Landslide Hazard and Risk Assessment: Geomorphology & Hydrology

Drawn by: AB Date: 31/08/2022

Drawing: R162_11469_001_Fig10-3-4_GeomorphHydro_A



Reproduced by permission of Ordnance Survey on behalf of HMSO.
Crown copyright and database right 2022 all rights reserved.
Ordnance Survey Licence number 0100022432.

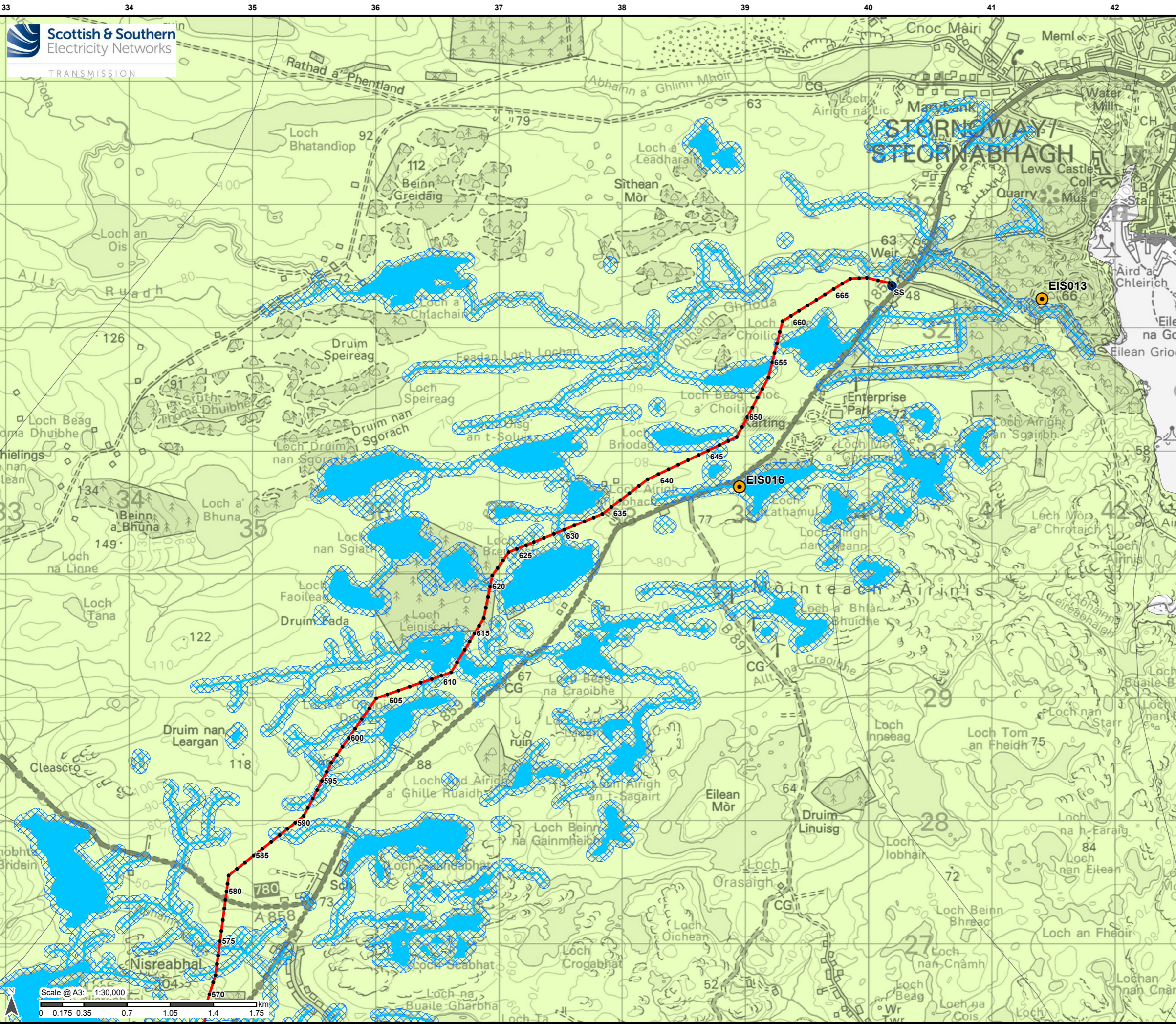
Project No: LT0245
Project: Harris to Stornoway 132 kV OHL Replacement

Title:
Figure 10.3.4e:
Peat Landslide Hazard and Risk Assessment:
Geomorphology & Hydrology

Drawn by: AB Date: 31/08/2022

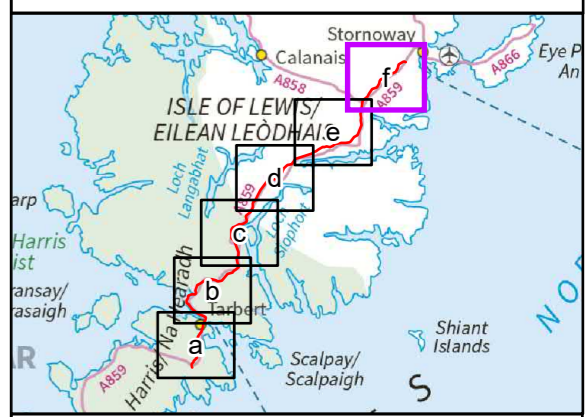
Drawing: R162_11469_001_Fig10-3-4_GeomorphHydro_A





Legend

- Proposed Alignment
- Indicative Pole Location
- Stornoway Substation
- Private Water Supply
- Watercourse
- Waterbody
- Surfacewater 50m Buffer
- Low productivity aquifer



Reproduced by permission of Ordnance Survey on behalf of HMSO. Crown copyright and database right 2022 all rights reserved. Ordnance Survey Licence number 0100022432.

Project No: LT0245
 Project: Harris to Stornoway 132 kV OHL Replacement

Title: Figure 10.3.4f: Peat Landslide Hazard and Risk Assessment: Geomorphology & Hydrology

Drawn by: AB Date: 31/08/2022

Drawing: R162_11469_001_Fig10-3-4_GeomorphHydro_A