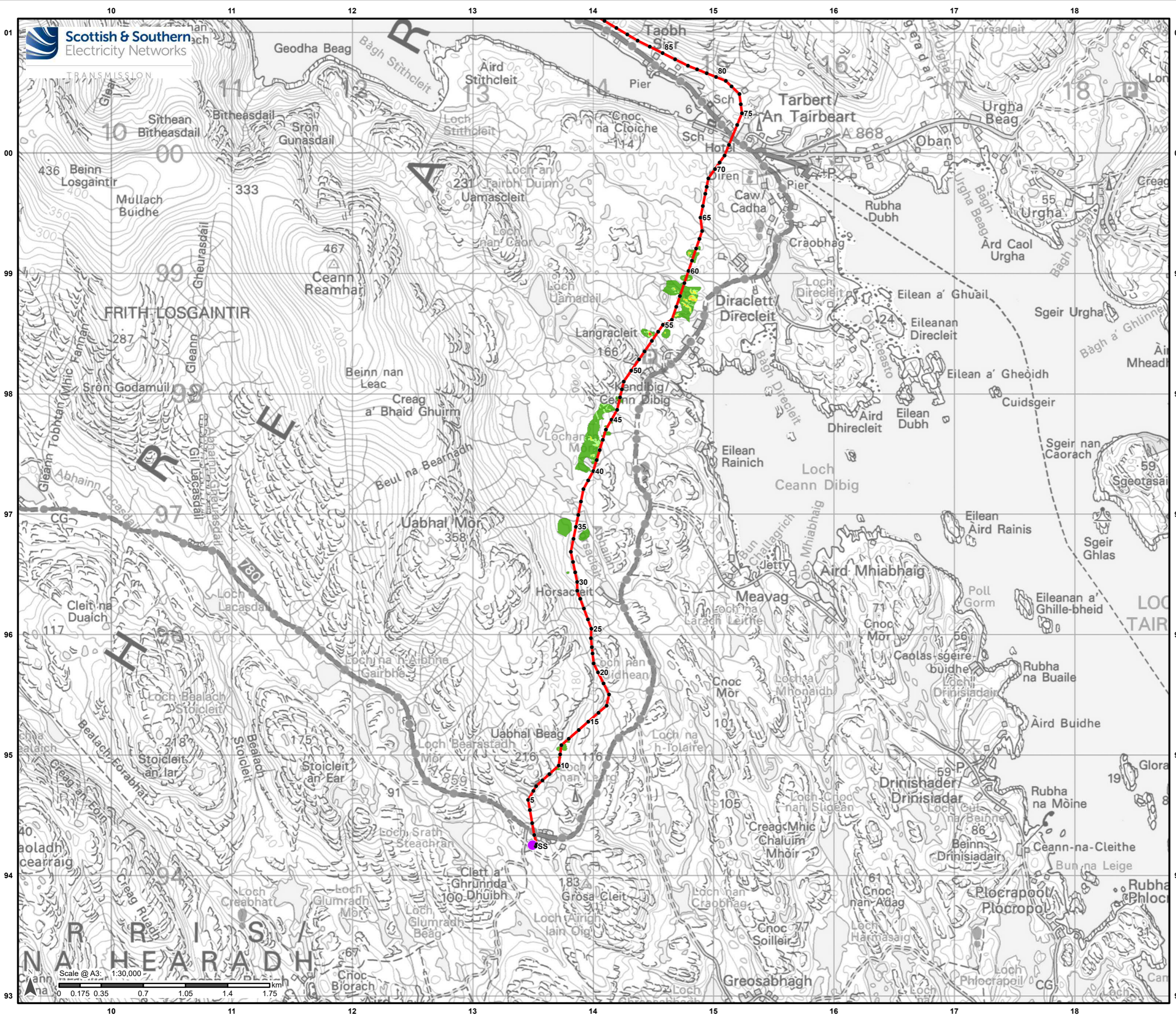


## **ANNEX A – FIGURES**

### **Figure 10.3.6a- 10.3.6f**

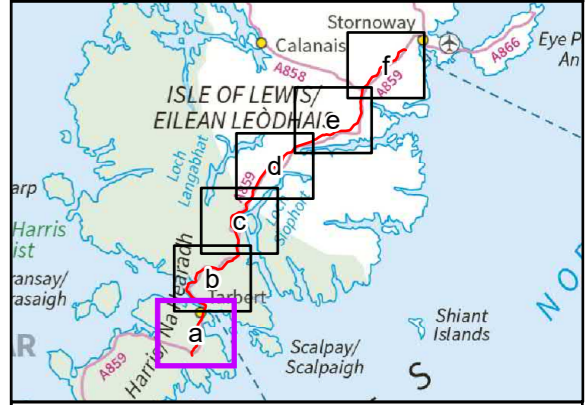


**Legend**

- Proposed Alignment
- Indicative Pole Location
- Harris 132kV Grid Supply Point

**Factor of Safety**

- <math>< 1.0</math> (unstable)
- 1.0 - 1.4 (marginally unstable)
- 1.4 - 2.0 (stable)
- 2.0 - 3.0 (stable)
- >3.0 (stable)



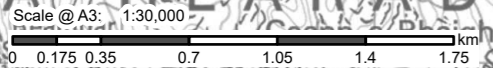
Reproduced by permission of Ordnance Survey on behalf of HMSO. Crown copyright and database right 2022 all rights reserved. Ordnance Survey Licence number 0100022432.

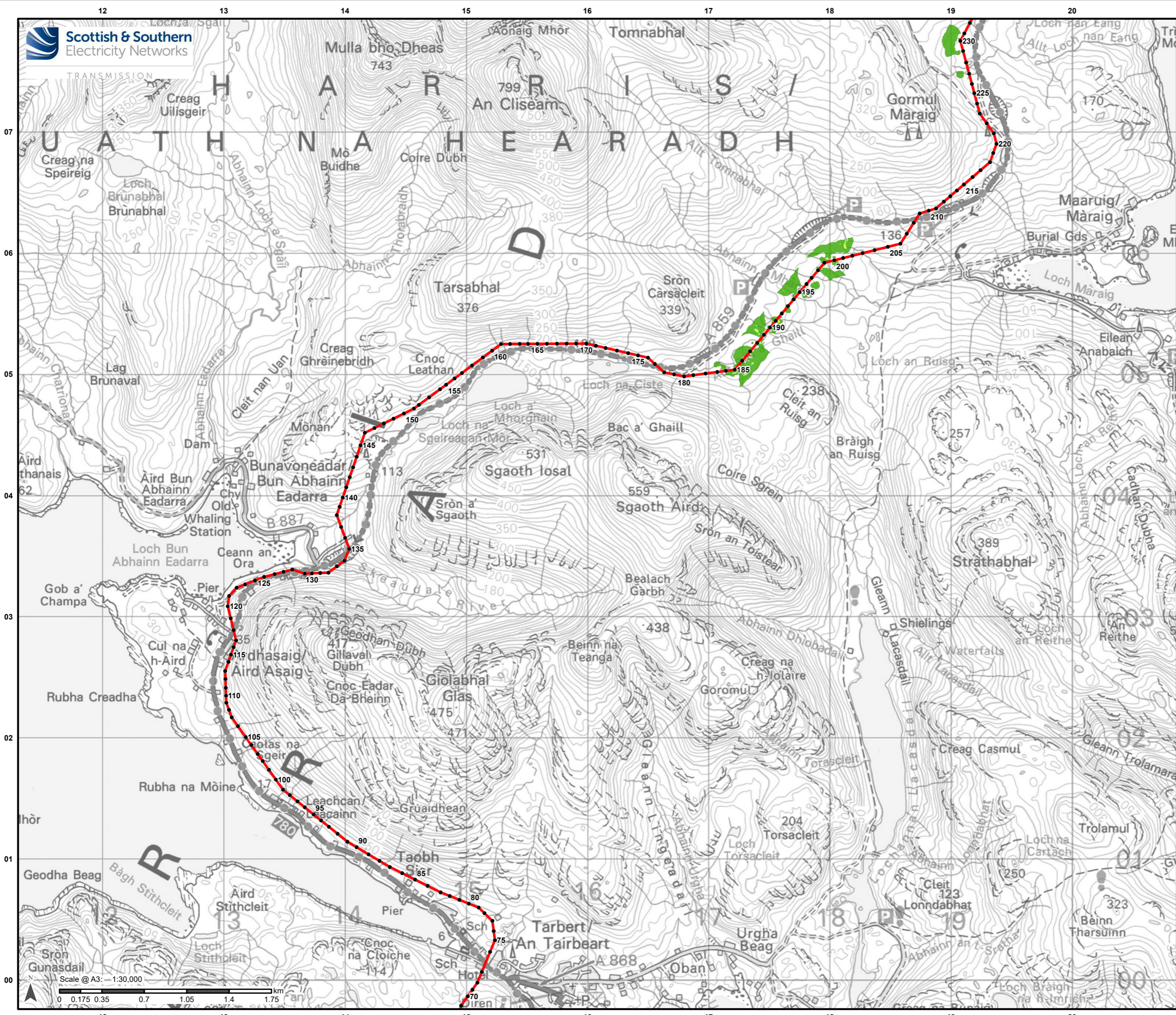
Project No: LT0245  
Project: Harris to Stornoway 132 kV OHL Replacement

Title: Figure 10.3.6a: Peat Landslide Hazard and Risk Assessment: Factor of Safety

Drawn by: AB Date: 31/08/2022

Drawing: R162\_11469\_001\_Fig10-3-6\_FactorOfSafety\_B



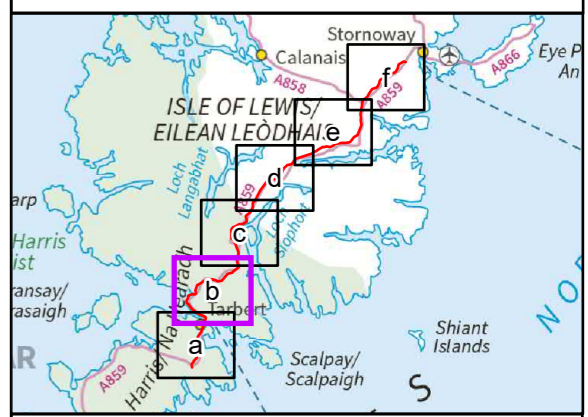


**Legend**

- Proposed Alignment
- Indicative Pole Location

**Factor of Safety**

- 1.0 - 1.4 (marginally unstable)
- 1.4 - 2.0 (stable)
- 2.0 - 3.0 (stable)
- >3.0 (stable)



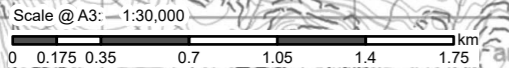
Reproduced by permission of Ordnance Survey on behalf of HMSO. Crown copyright and database right 2022 all rights reserved. Ordnance Survey Licence number 0100022432.

Project No: LT0245  
Project: Harris to Stornoway 132 kV OHL Replacement

Title: Figure 10.3.6b: Peat Landslide Hazard and Risk Assessment: Factor of Safety

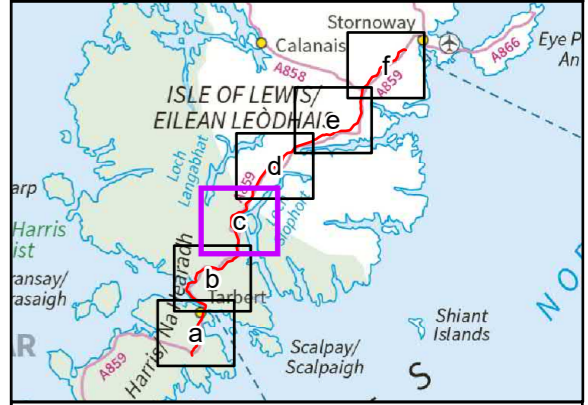
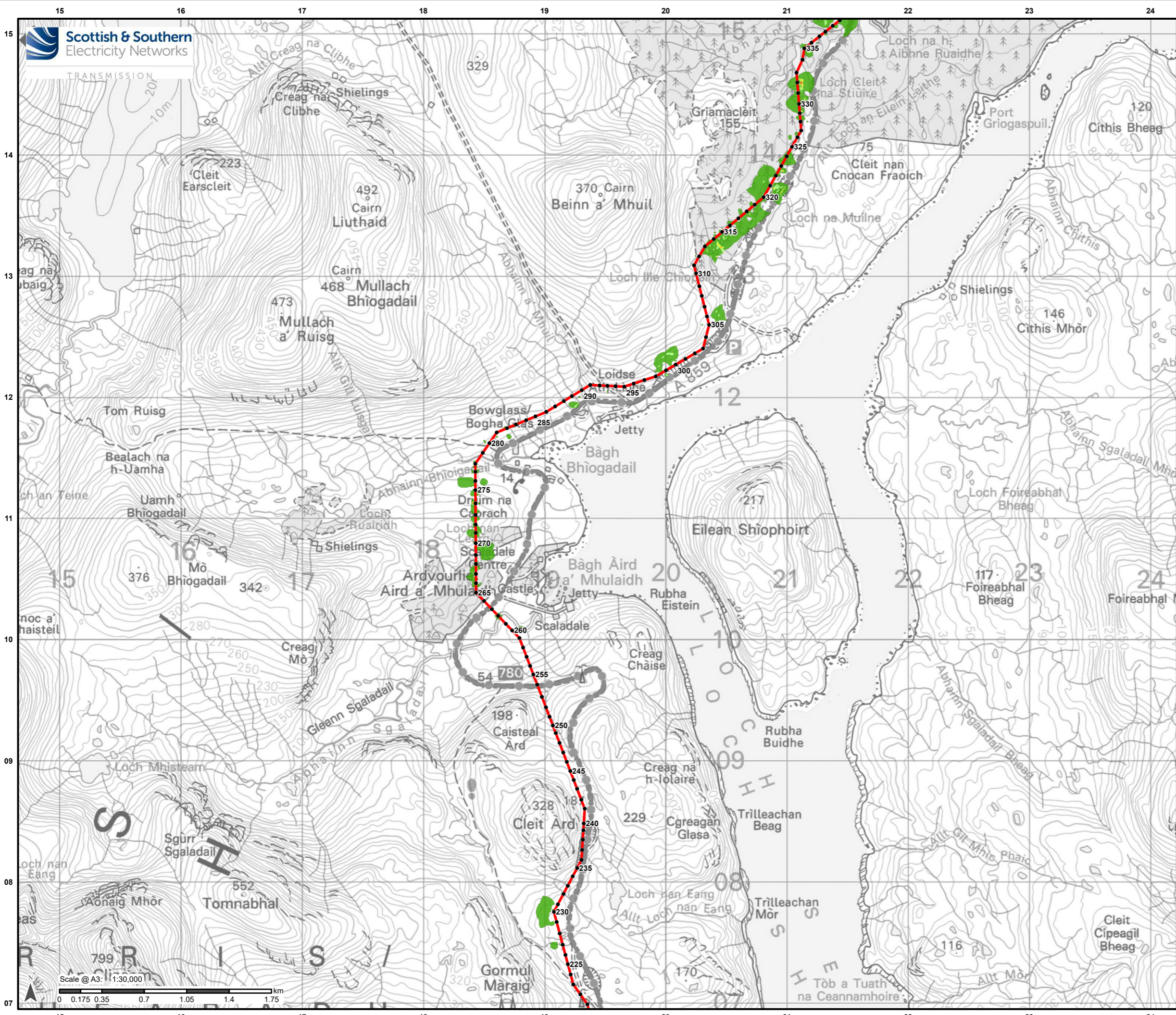
Drawn by: AB Date: 31/08/2022

Drawing: R162\_11469\_001\_Fig10-3-6\_FactorOfSafety\_B



**Legend**

- Proposed Alignment
  - Indicative Pole Location
- Factor of Safety**
- < 1.0 (unstable)
  - 1.0 - 1.4 (marginally unstable)
  - 1.4 - 2.0 (stable)
  - 2.0 - 3.0 (stable)
  - >3.0 (stable)



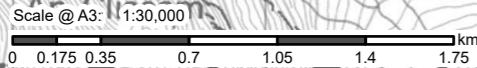
Reproduced by permission of Ordnance Survey on behalf of HMSO. Crown copyright and database right 2022 all rights reserved. Ordnance Survey Licence number 0100022432.

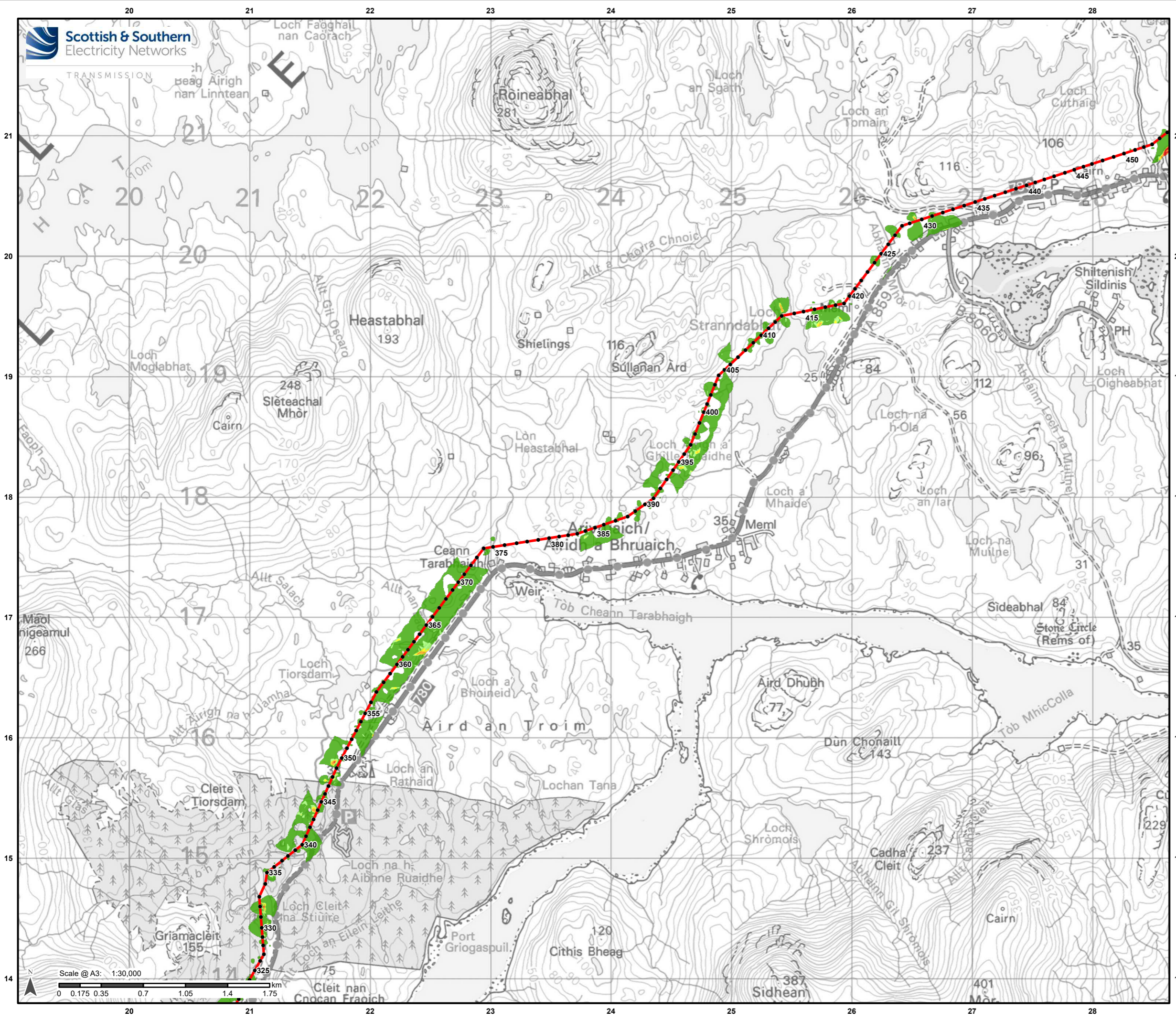
Project No: LT0245  
Project: Harris to Stornoway 132 kV OHL Replacement

Title: Figure 10.3.6c: Peat Landslide Hazard and Risk Assessment: Factor of Safety

Drawn by: AB Date: 31/08/2022

Drawing: R162\_11469\_001\_Fig10-3-6\_FactorOfSafety\_B



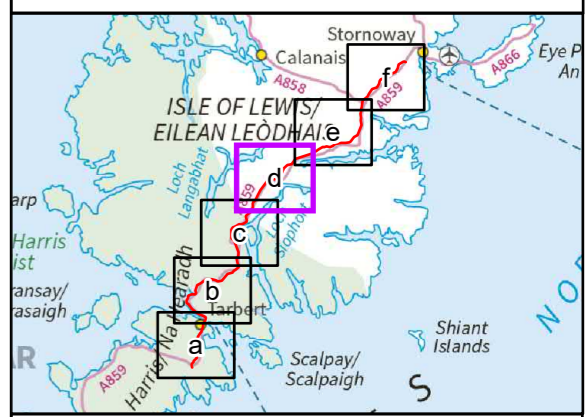


**Legend**

- Proposed Alignment
- Indicative Pole Location

**Factor of Safety**

- <math>< 1.0</math> (unstable)
- 1.0 - 1.4 (marginally unstable)
- 1.4 - 2.0 (stable)
- 2.0 - 3.0 (stable)
- >3.0 (stable)



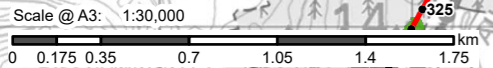
Reproduced by permission of Ordnance Survey on behalf of HMSO. Crown copyright and database right 2022 all rights reserved. Ordnance Survey Licence number 0100022432.

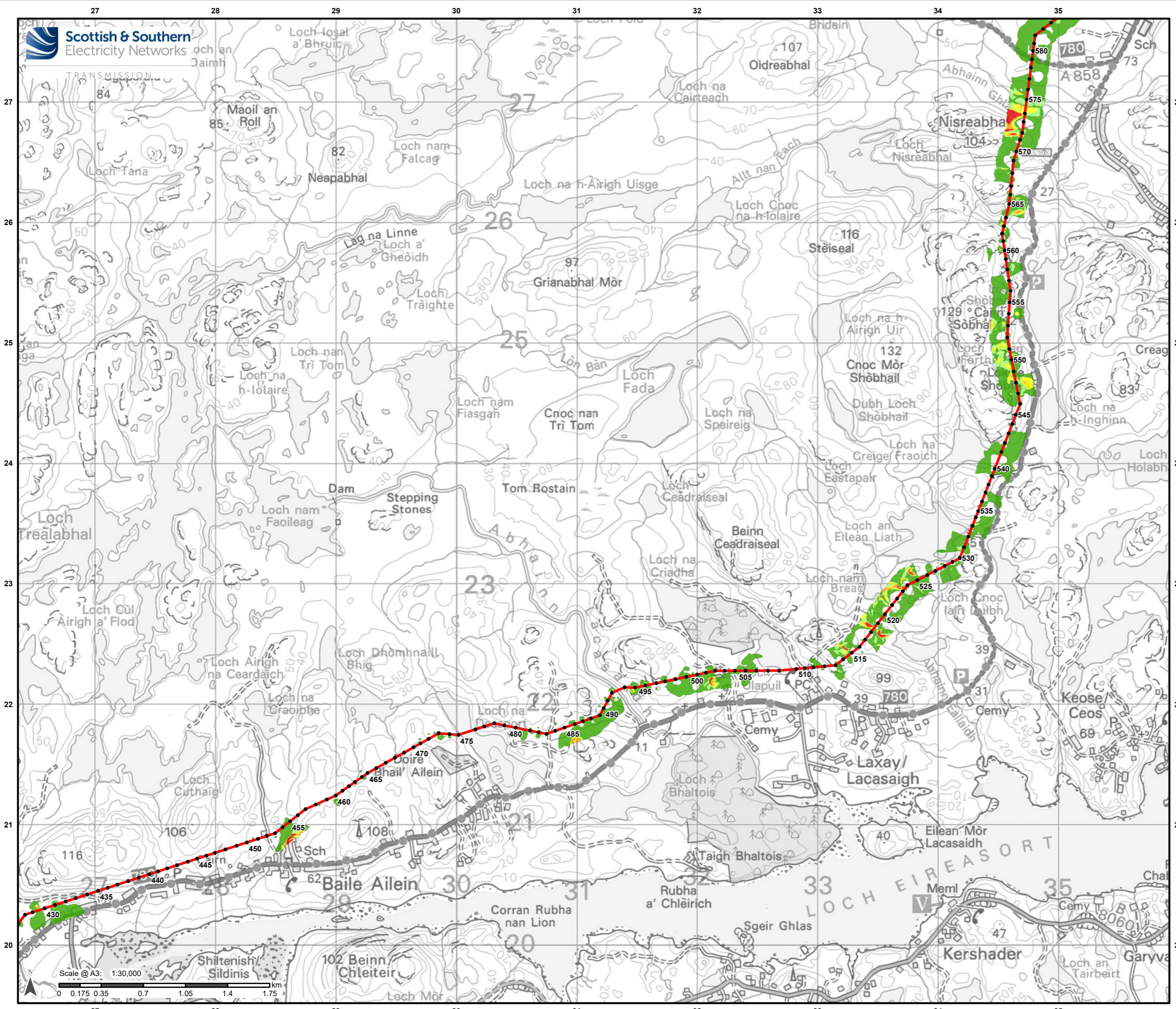
Project No: LT0245  
Project: Harris to Stornoway 132 kV OHL Replacement

Title: Figure 10.3.6d: Peat Landslide Hazard and Risk Assessment: Factor of Safety

Drawn by: AB Date: 31/08/2022

Drawing: R162\_11469\_001\_Fig10-3-6\_FactorOfSafety\_B



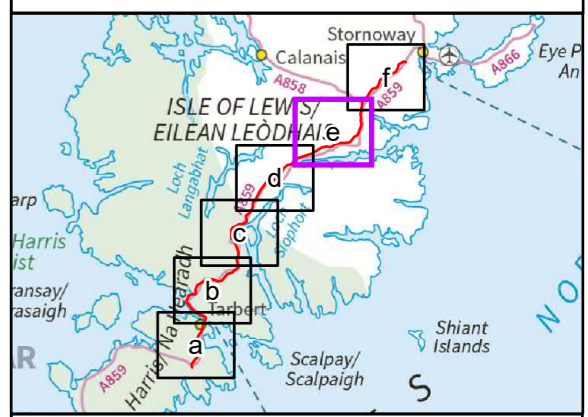


**Legend**

- Proposed Alignment
- Indicative Pole Location

**Factor of Safety**

- █ <math>FoS < 1.0</math> (unstable)
- █ 1.0 - 1.4 (marginally unstable)
- █ 1.4 - 2.0 (stable)
- █ 2.0 - 3.0 (stable)
- █ >3.0 (stable)



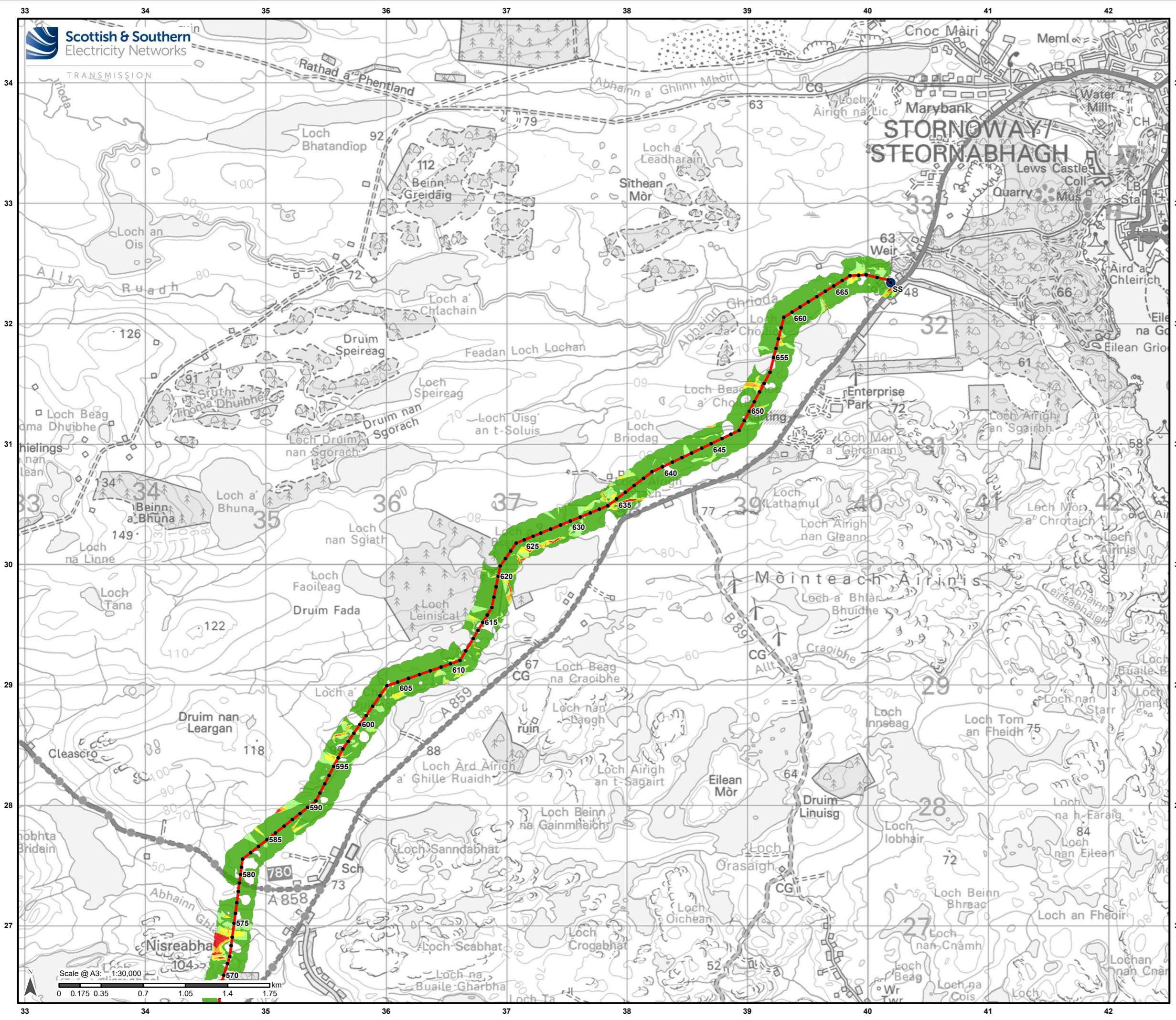
Reproduced by permission of Ordnance Survey on behalf of HMSO.  
Crown copyright and database right 2022 all rights reserved.  
Ordnance Survey Licence number 0100022432.

Project No: LT0245  
Project: Harris to Stornoway 132 kV OHL Replacement

Title: Figure 10.3.6e:  
Peat Landslide Hazard and Risk Assessment:  
Factor of Safety

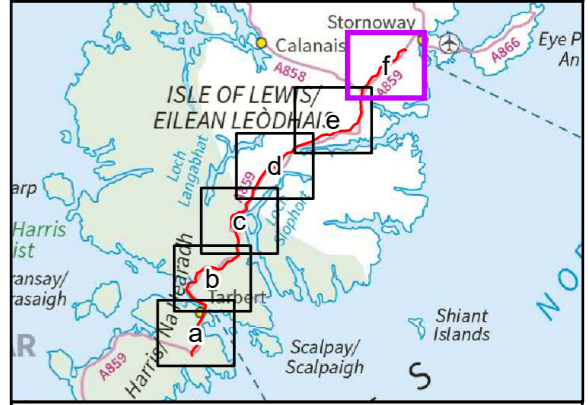
Drawn by: AB Date: 31/08/2022

Drawing: R162\_11469\_001\_Fig10-3-6\_FactorOfSafety\_B



**Legend**

- Proposed Alignment
  - Indicative Pole Location
  - Stornoway Substation
- Factor of Safety**
- <math>< 1.0</math> (unstable)
  - 1.0 - 1.4 (marginally unstable)
  - 1.4 - 2.0 (stable)
  - 2.0 - 3.0 (stable)
  - >3.0 (stable)



Reproduced by permission of Ordnance Survey on behalf of HMSO. Crown copyright and database right 2022 all rights reserved. Ordnance Survey Licence number 0100022432.

Project No: LT0245  
Project: Harris to Stornoway 132 kV OHL Replacement

Title: Figure 10.3.6f: Peat Landslide Hazard and Risk Assessment: Factor of Safety

Drawn by: AB Date: 31/08/2022

Drawing: R162\_11469\_001\_Fig10-3-6\_FactorOfSafety\_B