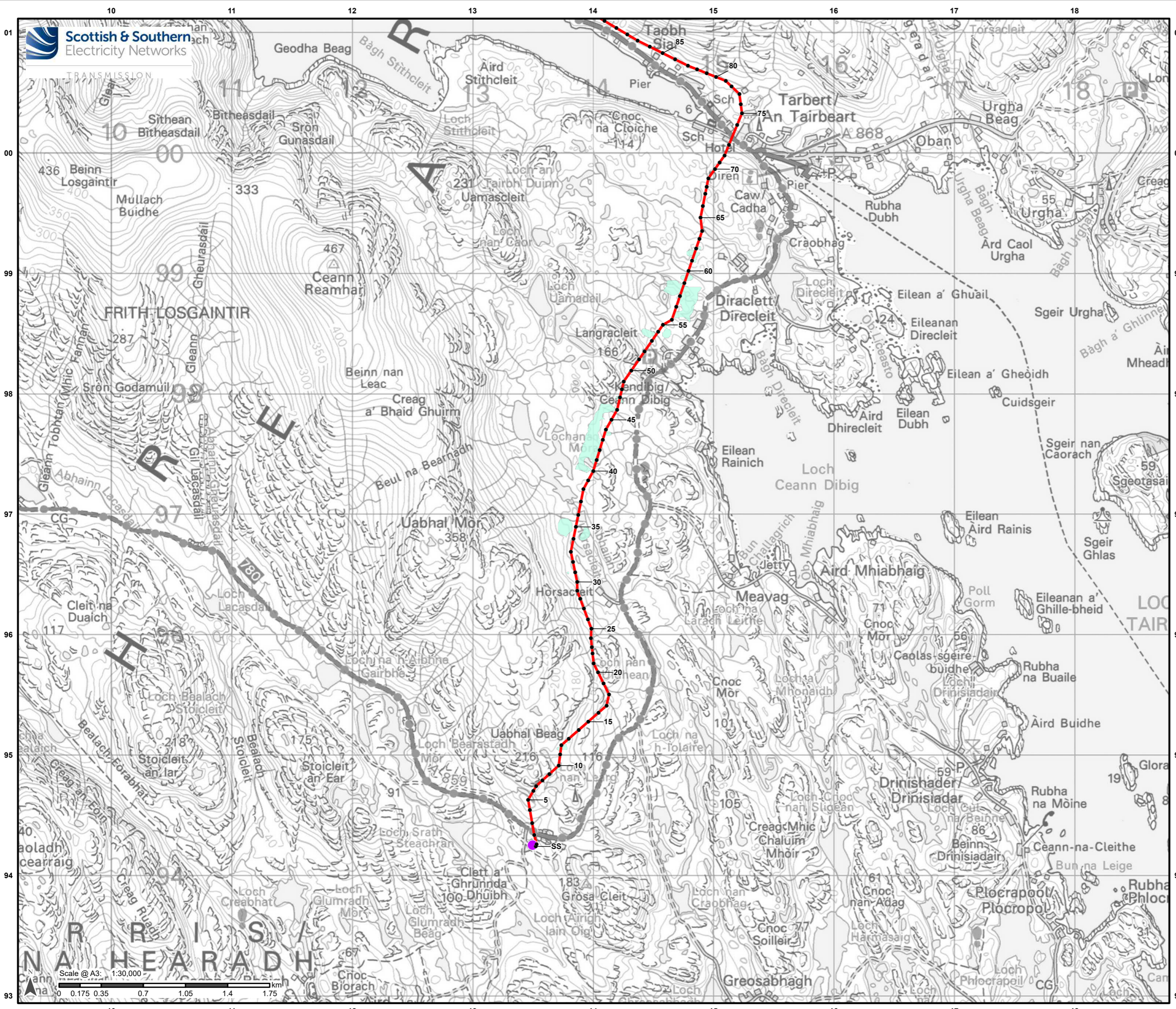


## **ANNEX A – FIGURES**

### **Figure 10.3.7e\la - 10.3.7e\lf**

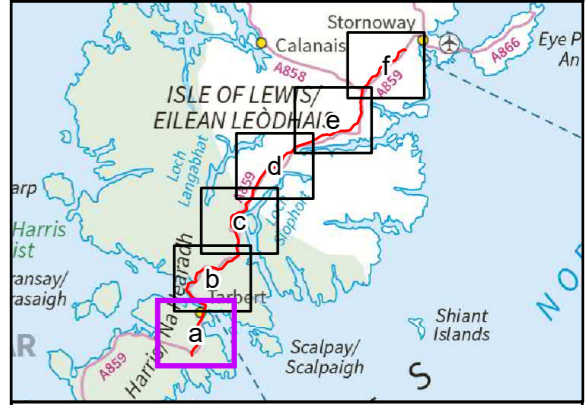


**Legend**

- Proposed Alignment
- Indicative Pole Location
- Harris 132kV Grid Supply Point

**Drainage Scores (D)**

- Score 0: No drainage lines



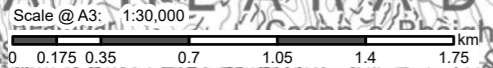
Reproduced by permission of Ordnance Survey on behalf of HMSO. Crown copyright and database right 2022 all rights reserved. Ordnance Survey Licence number 0100022432.

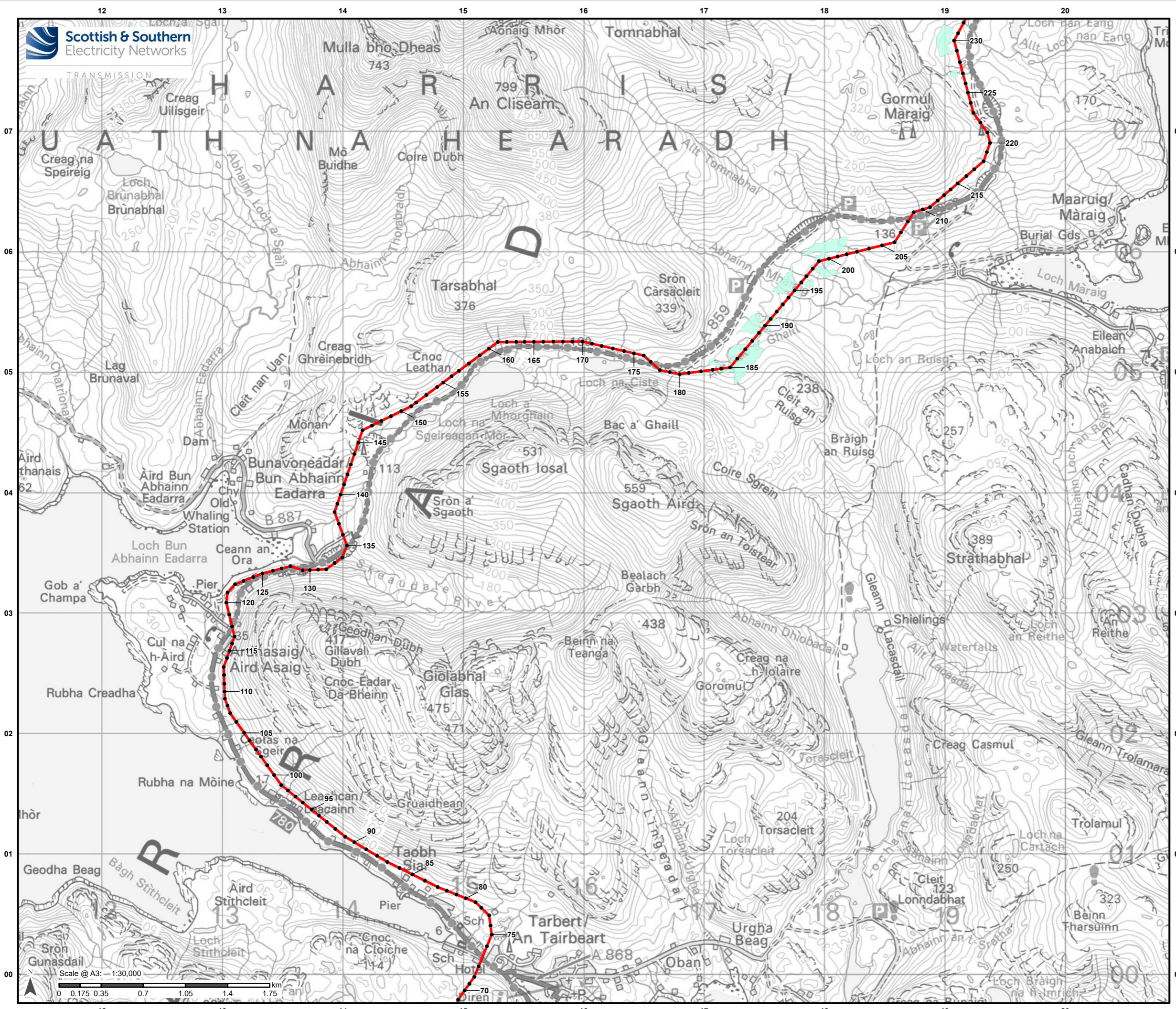
Project No: LT0245  
Project: Harris to Stornoway 132 kV OHL Replacement

Title:  
Figure 10.3.7e(a):  
Peat Landslide Hazard and Risk Assessment:  
Contributing Factor - Drainage Score

Drawn by: AB Date: 31/08/2022

Drawing: R162\_11469\_001\_Fig10-3-7e\_ContribFactDrainage\_B





**Legend**

- Proposed Alignment
- Indicative Pole Location

**Drainage Scores (D)**

- Score 0: No drainage lines

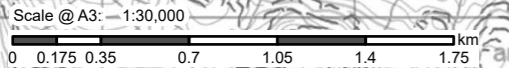
Reproduced by permission of Ordnance Survey on behalf of HMSO. Crown copyright and database right 2022 all rights reserved. Ordnance Survey Licence number 0100022432.

Project No: LT0245  
Project: Harris to Stornoway 132 kV OHL Replacement

Title: Figure 10.3.7eb: Peat Landslide Hazard and Risk Assessment: Contributing Factor - Drainage Score

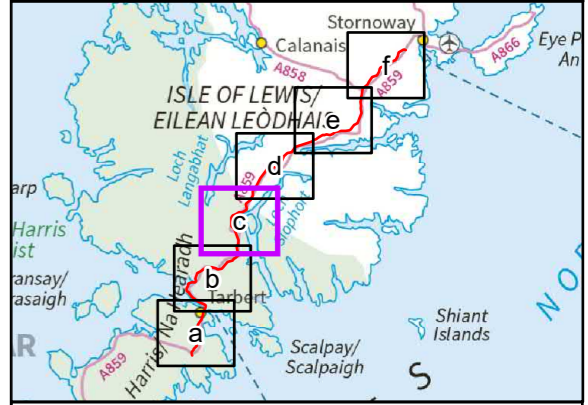
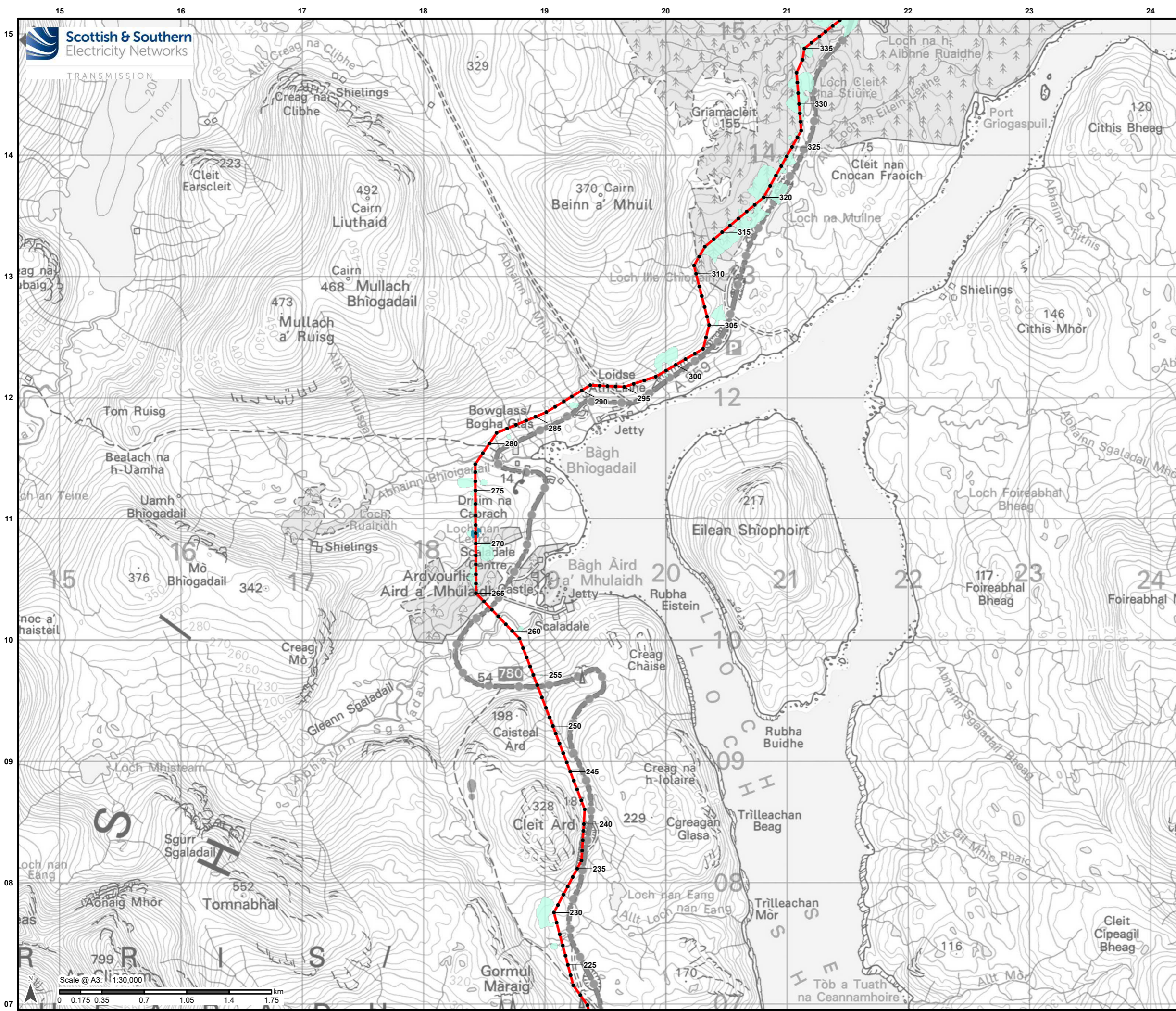
Drawn by: AB Date: 31/08/2022

Drawing: R162\_11469\_001\_Fig10-3-7e\_ContribFactDrainage\_B



**Legend**

- Proposed Alignment
  - Indicative Pole Location
- Drainage Scores (D)**
- Score 0: No drainage lines
  - Score 1: Drain aligned to slope



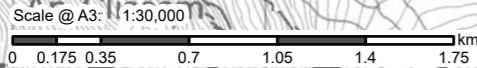
Reproduced by permission of Ordnance Survey on behalf of HMSO. Crown copyright and database right 2022 all rights reserved. Ordnance Survey Licence number 0100022432.

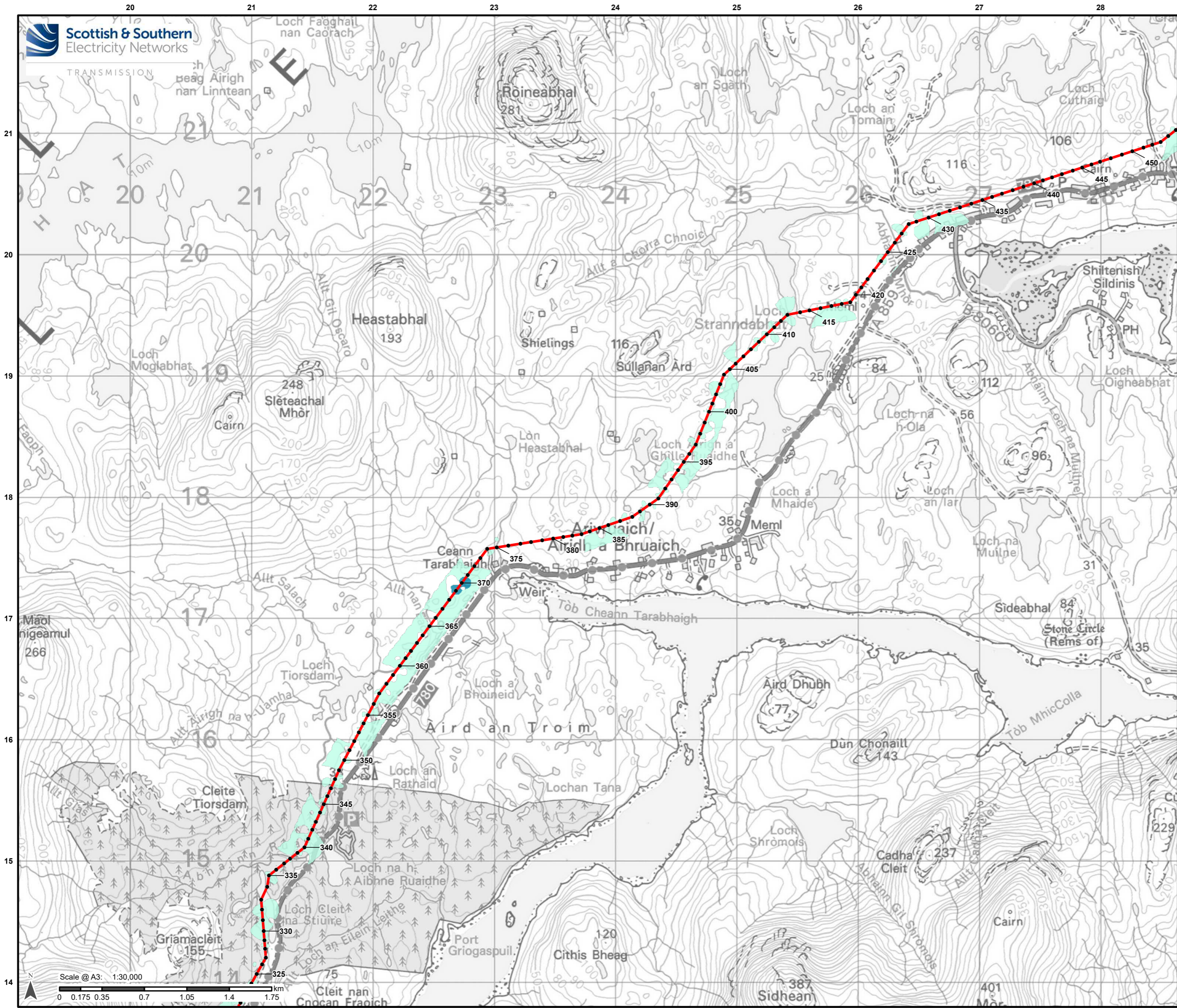
Project No: LT0245  
Project: Harris to Stornoway 132 kV OHL Replacement

Title: Figure 10.3.7e/c:  
Peat Landslide Hazard and Risk Assessment:  
Contributing Factor - Drainage Score

Drawn by: AB Date: 31/08/2022

Drawing: R162\_11469\_001\_Fig10-3-7e\_ContribFactDrainage\_B



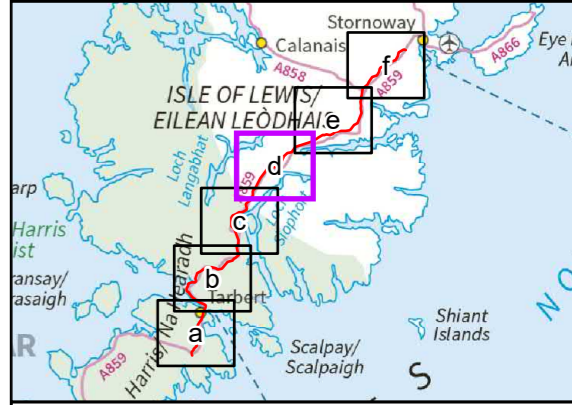


**Legend**

- Proposed Alignment
- Indicative Pole Location

**Drainage Scores (D)**

- Score 0: No drainage lines
- Score 1: Drain aligned to slope



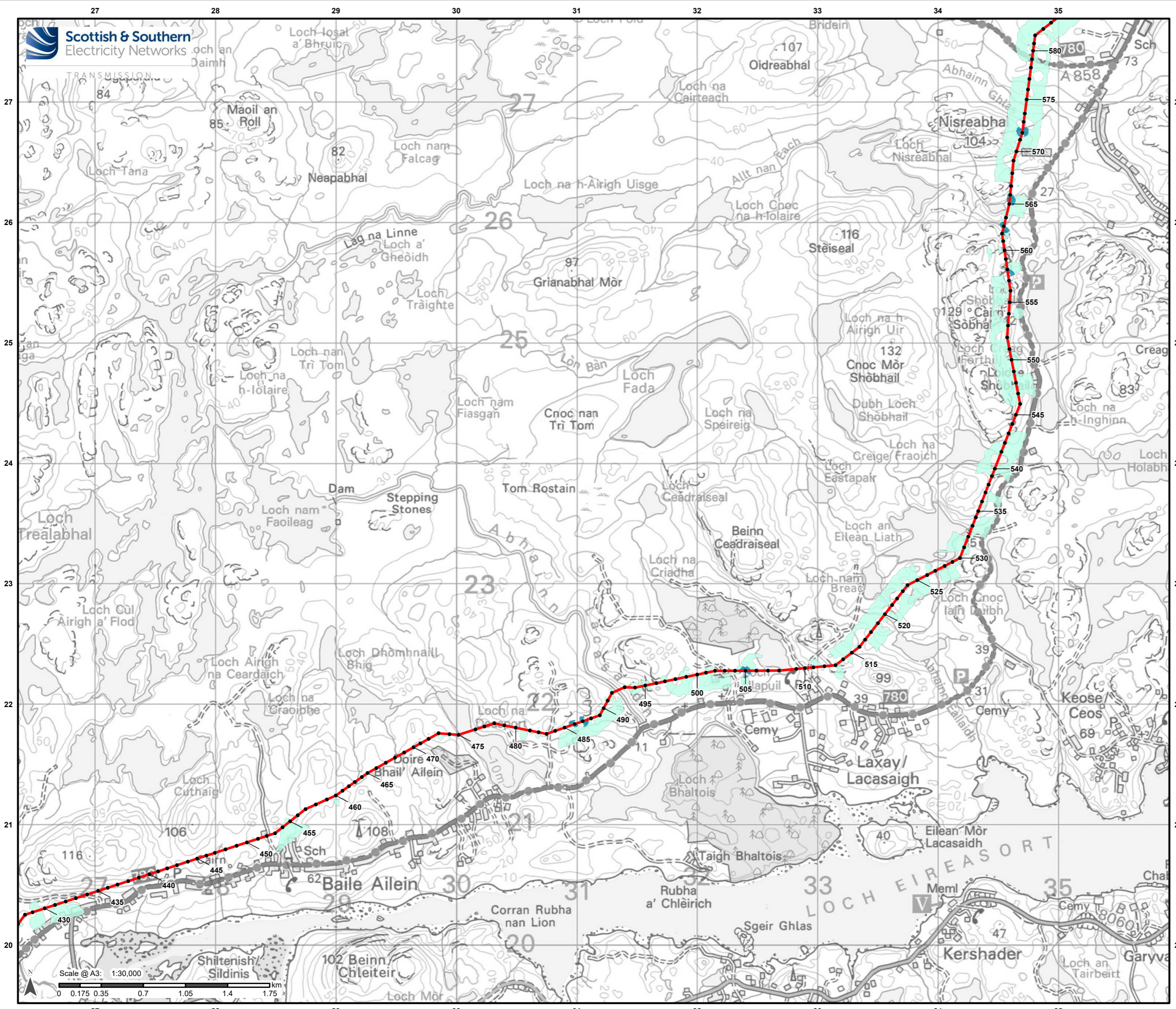
Reproduced by permission of Ordnance Survey on behalf of HMSO. Crown copyright and database right 2022 all rights reserved. Ordnance Survey Licence number 0100022432.

Project No: LT0245  
Project: Harris to Stornoway 132 kV OHL Replacement

Title: Figure 10.3.7e(d):  
Peat Landslide Hazard and Risk Assessment:  
Contributing Factor - Drainage Score

Drawn by: AB Date: 31/08/2022

Drawing: R162\_11469\_001\_Fig10-3-7e\_ContribFactDrainage\_B

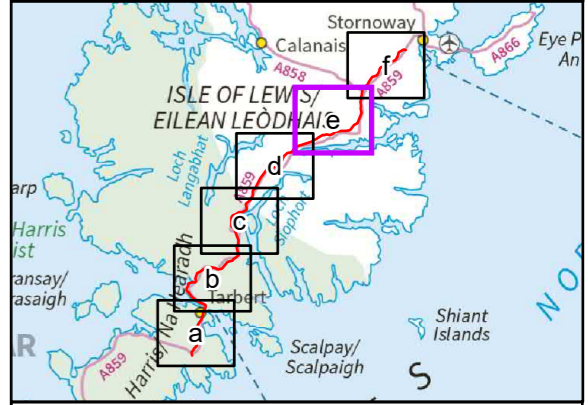


**Legend**

- Proposed Alignment
- Indicative Pole Location

**Drainage Scores (D)**

- Score 0: No drainage lines
- Score 1: Drain aligned to slope



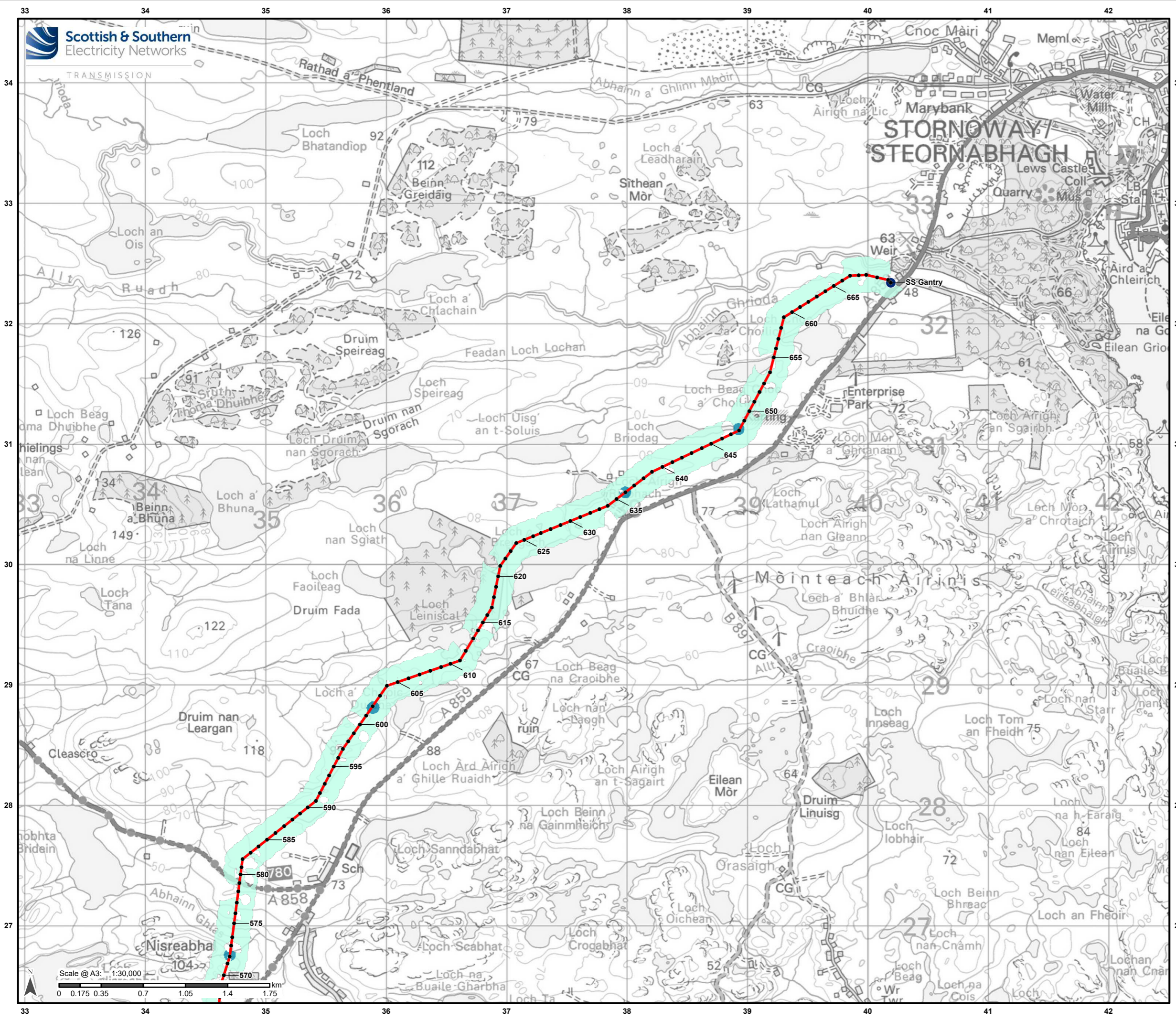
Reproduced by permission of Ordnance Survey on behalf of HMSO.  
Crown copyright and database right 2022 all rights reserved.  
Ordnance Survey Licence number 0100022432.

Project No: LT0245  
Project: Harris to Stornoway 132 kV OHL Replacement

Title:  
Figure 10.3.7e:  
Peat Landslide Hazard and Risk Assessment:  
Contributing Factor - Drainage Score

Drawn by: AB Date: 31/08/2022

Drawing: R162\_11469\_001\_Fig10-3-7e\_ContribFactDrainage\_B

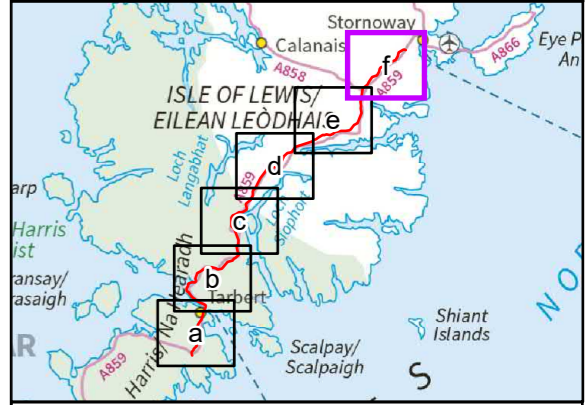


**Legend**

- Proposed Alignment
- Indicative Pole Location
- Stornoway Substation

**Drainage Scores (D)**

- Score 0: No drainage lines
- Score 1: Drain aligned to slope



Reproduced by permission of Ordnance Survey on behalf of HMSO. Crown copyright and database right 2022 all rights reserved. Ordnance Survey Licence number 0100022432.

Project No: LT0245  
Project: Harris to Stornoway 132 kV OHL Replacement

Title: Figure 10.3.7ef: Peat Landslide Hazard and Risk Assessment: Contributing Factor - Drainage Score

Drawn by: AB Date: 31/08/2022

Drawing: R162\_11469\_001\_Fig10-3-7e\_ContribFactDrainage\_B