



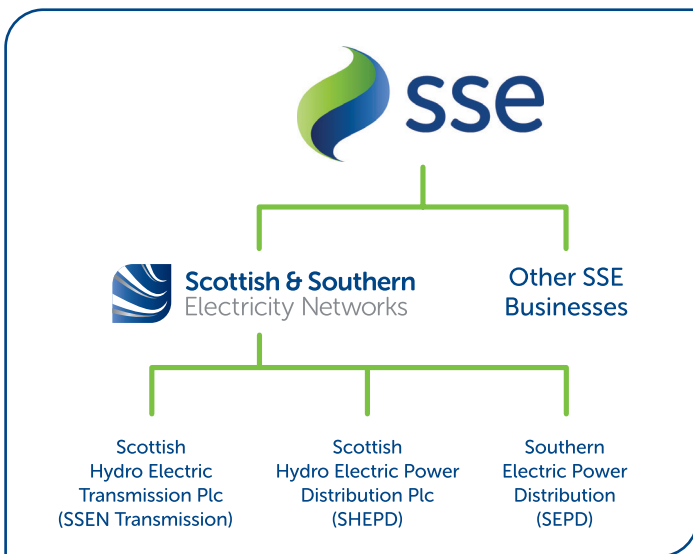
# Inveraray to Crossaig Reinforcement Project

Project Newsletter | February 2022

## Who are SSEN Transmission?

We own, operate and develop the high voltage electricity transmission network in the north of Scotland. The network consists of underground and subsea cables, overhead lines on wooden poles and steel towers, and electricity substations, extending over a quarter of the UK's land mass crossing some of its most challenging terrain.

We power the communities we serve by providing a safe and reliable supply of electricity, taking the electricity from generators and transporting it at high voltages over long distances through the transmission network for onwards distribution to homes and businesses in villages, towns and cities.



## What is the difference between Transmission and Distribution?

Electricity Transmission is the transportation of electricity from generating plants to where it is required at centres of demand. The Electricity Transmission network, or grid, transports electricity at very high voltages through overhead lines (OHL), underground cables (UCG) and subsea cables. Our transmission network connects large scale generation, primarily renewables, to central and southern Scotland and the rest of Great Britain. It also helps secure supply by providing reliable connection to the wider network of generation plans.

The Electricity Distribution network is connected into the Transmission network but the voltage is lowered by transformers at electricity substations, and the power is then distributed to homes and businesses through overhead lines or underground cables.

## About this newsletter

As we start constructing the second phase of the Inveraray to Crossaig project, we have created a newsletter to keep you updated on the current and upcoming work we will be undertaking. We will continue to provide these updates as the project progresses throughout construction.

## Keeping in touch

We will be sharing regular updates on the project website, where you can also register for updates and find contact details to get in touch our team.

[www.ssen-transmission.co.uk/projects/inveraray-crossaig/](http://www.ssen-transmission.co.uk/projects/inveraray-crossaig/)

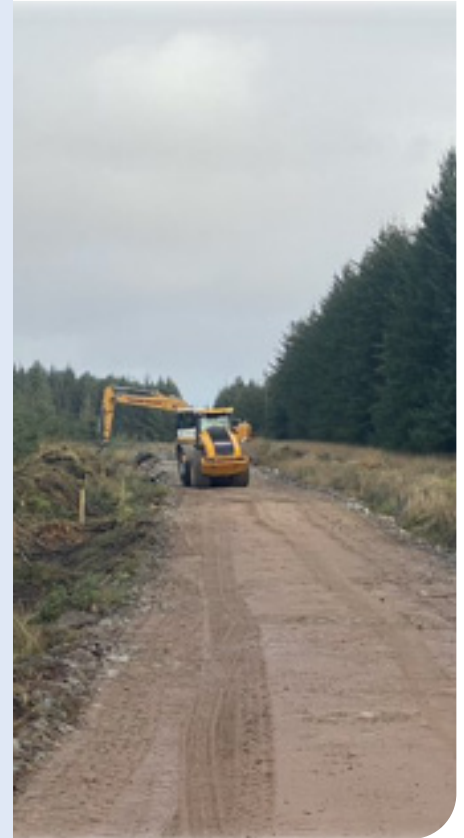
## Project update

Over the festive period, we closed down our site on the 17th December through to the 10th January ensuring everyone had a well deserved break and got to spend time with family and friends. A safe return to work is a key priority following a site wide shut down so we undertook fresh site inductions and winter safety briefings for our teams and we are now focussing on getting fully back up and running and looking forward to the coming months. We are currently in Phase 2 of the works in our Inveraray to Crossaig Project. On site we are focusing on both forestry and civil works at present. Forestry is required to provide access routes and form an operational corridor. Civil works on site include accessing, creating, and upgrading existing access tracks in preparation for the foundations of the towers prior to their assembly and erection which will commence in early 2022.

## What is coming up

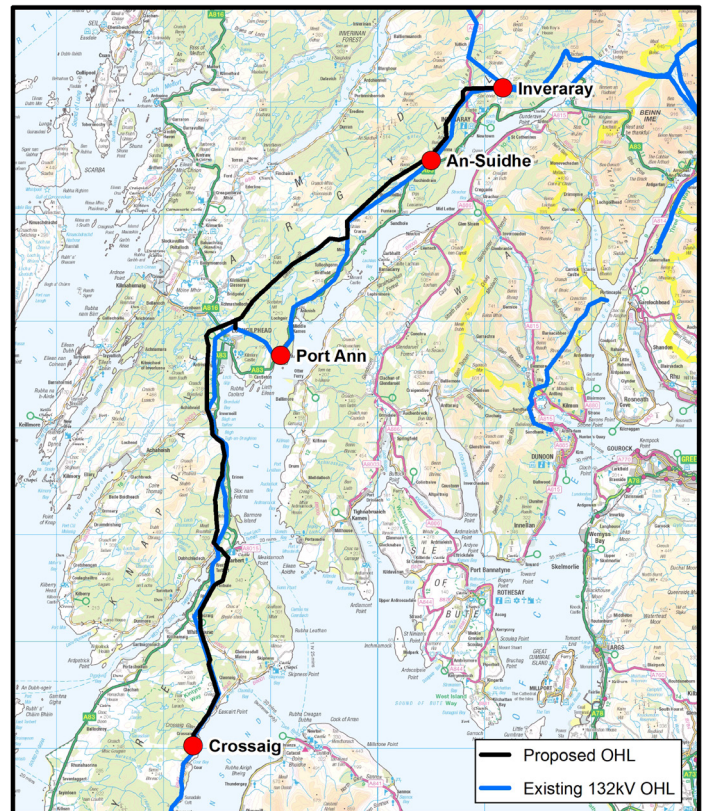
We are 85% of the way through the forestry works on site. In early 2022 you will start to see more foundations being laid in preparation for the erecting of towers. Currently we have three foundations completed with one piled for the metal rods to go straight into the ground to support the tower.

The plan is to remobilise in early 2022 to undertake management felling, selective felling and the retention of broad life, this means we are looking at effectively managing all the forestry surrounding the project with the view of looking to complete all forestry in 2022.



## Highlights

There has been a discovery of a historic wall also known as a Ha Ha Wall. Our contractor Balfour Beatty's past experience in this has enabled them to take a proactive approach. In order to preserve this during construction an access track will be put in to allow for livestock to pass and the Ha Ha Wall will be fenced. From discussions in our recent Community Liaison Group meeting it was thought that this Ha Ha Wall would have served an old estate house.



## PPE to schools

Teams working on the Inveraray to Crossaig electricity reinforcement project donated more than 80 sets of high-visibility waistcoats as well as more than 200 snap-on reflective arm bands, water bottles and wind-up torches.

Tarbert Academy runs a popular 'cycle to school' programme to help pupils use active travel to get them to and from school, and the high-visibility equipment will help pupils be safer on the road network in the hours of darkness.

SSEN Transmission construction supervisor Paul Munn visited Tarbert Academy earlier this month to deliver the winter safety kits to head teacher Neil McKnight and meet some of the pupils who will benefit from the extra safety measures during their commutes to school.

Transmission project manager David Auld said: 'Safety is our number one priority when working on our sites, and what better way to share this message with the young people at Tarbert Academy than by donating equipment to help ensure pupils can travel home safely during the winter months in the run up to Christmas and when the new term starts next year.

'We're proud to support the local community while we continue with our work to reinforce the Inveraray to Crossaig overhead line, which, once complete, will ensure there remains a safe, reliable and secure supply of energy into Argyll.

'It's great to hear that active travel is so popular with the pupils in the area, and we hope that the donations of high-vis reflective equipment will help them be safe and be seen on their journeys.'

Head teacher Mr McKnight said: 'The safety, health and wellbeing of our young people is our highest priority at Tarbert Academy and I was delighted to accept the very generous donation of winter safety kits from SSEN Transmission.'



## Biodiversity on site

As a company we are aiming to promote 'biodiversity net gain'. On this project we will be looking to replace and improve on what was lost through the felling works in this project to date. An example of this is to install bat, pine martin and red squirrel boxes along one of the operational corridors. These are considered beneficial for the species concerned and not intended to trap but to offer shelter and a place to roost/nest or similar. This is not a part of our contract consent but is considered best practice as per NatureScot and it aligns with our company values.



## Health and Safety

From the start of the Inveraray to Crossaig project, SSEN Transmission have always ensured that our top priority has been the health and safety of all employees involved on the project, as well as to any members of the public who could be affected by our activities. To achieve this we continue to work with our Principal Contractor, Balfour Beatty, and with other interested parties to ensure that any activity is carried out safely, with all necessary controls in place, to negate or reduce any risk to as low as reasonably practicable. All employees are empowered through SSEN's safety licence to stop any work should they feel that something is not right...

Our mantra is: **"If it's not safe we don't do it."**

Our managers and supervisors, with the help of our health and safety advisors, will ensure that these goals are achieved through regular engagement with employees on site and reporting of all site safety visits. We also encourage anyone in the community to report anything they see we are doing which they believe to be unsafe. Not only will we investigate the report, but we'll also ensure that the reporter is informed of the outcome to give them comfort that we take these reports seriously.

Throughout the last two years the threat of COVID 19 has been uppermost in our thoughts. With most of the workforce traveling from across the country to work on the project, we have and will continue to ensure that robust measures are being followed to reduce any risk of transmitting the disease to colleagues and local residents.



## What meetings/groups have happened

### Community Liaison group

We meet on a monthly basis with our Community Liaison Group (CLG). Our group is made up of representatives from SSEN Transmission and Balfour Beatty, local elected members as well as local elected officials. We are very grateful to the local members who give up their free time to attend these meetings for the benefit of their wider community. The CLG allows us to collaborate effectively with local representatives of the community, ensuring there is a route for any issues or queries to be raised directly with the Project Management Team. The regular meetings are also key in helping us shape communications and community engagement plans so that communications are relevant and tailored to the targeted community. It is very important to us that we work effectively alongside local communities to ensure we have a collaborative relationship in safely delivering our project with minimal impact.

### Community Enhancement plan group

Our Project Manager, David Auld and our Community Liaison Manager, Caitlin Quinn alongside our Environmental Consultant, Bob Bainsfair from Ramboll visited Tarbet for a meeting in November to meet with representatives from the local community as part of our ongoing commitment to a Community Enhancement Plan. This group has been meeting on a monthly basis virtually over Microsoft Teams alongside the CLG group. The idea behind creating this group is to look at ways that we can make a positive impact on the local community that will leave a legacy after construction. After various discussions and monthly meetings we are looking at the possibility of retaining some of the access tracks so that the community can use these as part of local walks and further the area's offering to tourists. Minutes from these meetings will be posted on our websites.

## How can I keep up to date with project developments?

We will keep the community updated by sharing quarterly Newsletters, these, along with any other updates, will be published on the Inveraray – Crossaig Project webpage:

<https://www.ssen-transmission.co.uk/projects/inveraray-crossaig/>

Tailored communications will be sent out in relation to any activities that may impact the community. If you would like to receive subsequent issues of this Newsletter in printed format, please request this from the Community Liaison Manager. A digital copy of the Newsletter will be sent to all individuals who have registered for updates on the project webpage.

As a responsible developer it is important that we work closely with the communities in which we work. Our Community Liaison Team will be the interface between the local community and our onsite project teams. If you have any questions about the project, please contact Caitlin via email or phone:

**Caitlin Quinn**  
Community Liaison  
Manager Mob: 07901135758  
Email: caitlin.quinn@sse.com

**Grace Campbell**  
Land Manager  
Tel: 07586 281 466  
Email: grace.campbell@sse.com

[www.ssen-transmission.co.uk](http://www.ssen-transmission.co.uk)

[www.linkedin.com/company/ssen-transmission/](http://www.linkedin.com/company/ssen-transmission/)

