

MAKI

Inveraray – Crossaig Project update
September 2020



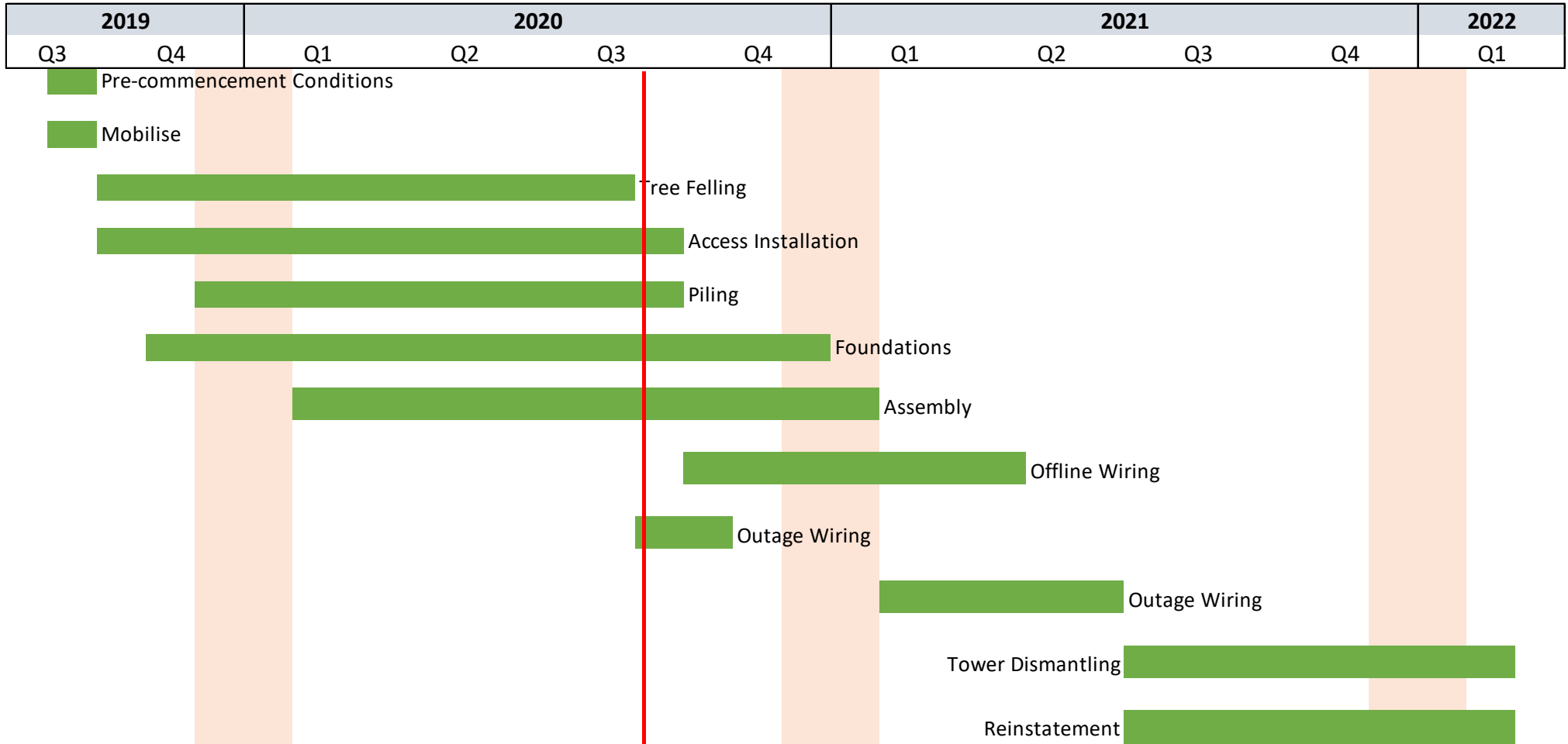
Balfour Beatty

Build to Last
Lean. Expert. Trusted. Safe.



Scottish & Southern
Electricity Networks

Inveraray to Port Ann – Project Programme



Key project milestones – 2020

Project construction commenced – October 2019



First towers topped out near Inveraray and Garvachy – June 2020



Forestry works complete Aug 2020



Access tracks complete September 2020

Piling complete October 2020

Commence wiring late Autumn 2020

Foundations complete December 2020

Key project milestones – 2021

Complete Wiring June 2021

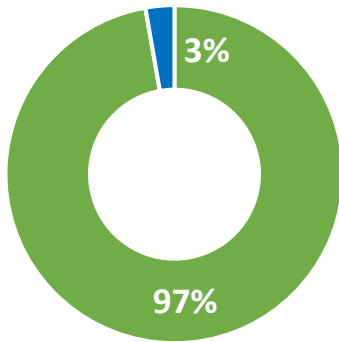
New overhead line energised in July 2021

Target completion of reinstatement in 2021

Complete dismantling of old overhead line Feb 2022

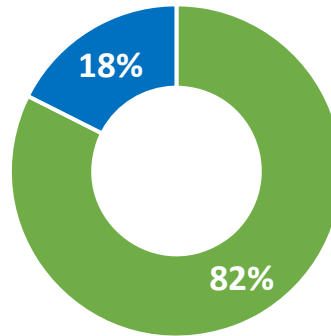
Inveraray to Port Ann – Key activity status

Access Track Upgrades & New Build



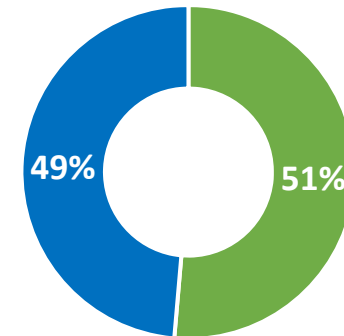
■ Completed to Date ■ Remaining

Piling Installation



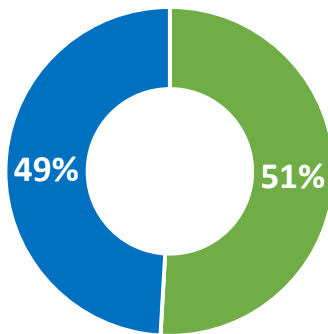
■ Completed to Date ■ Remaining

Foundation (Pile Cap)



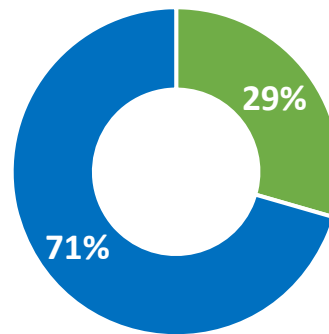
■ Completed to Date ■ Remaining

Foundation (Conventional)



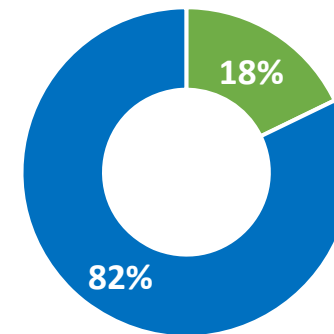
■ Completed to Date ■ Remaining

Tower Assembly



■ Completed to Date ■ Remaining

Tower Erection



■ Completed to Date ■ Remaining

Access Installation



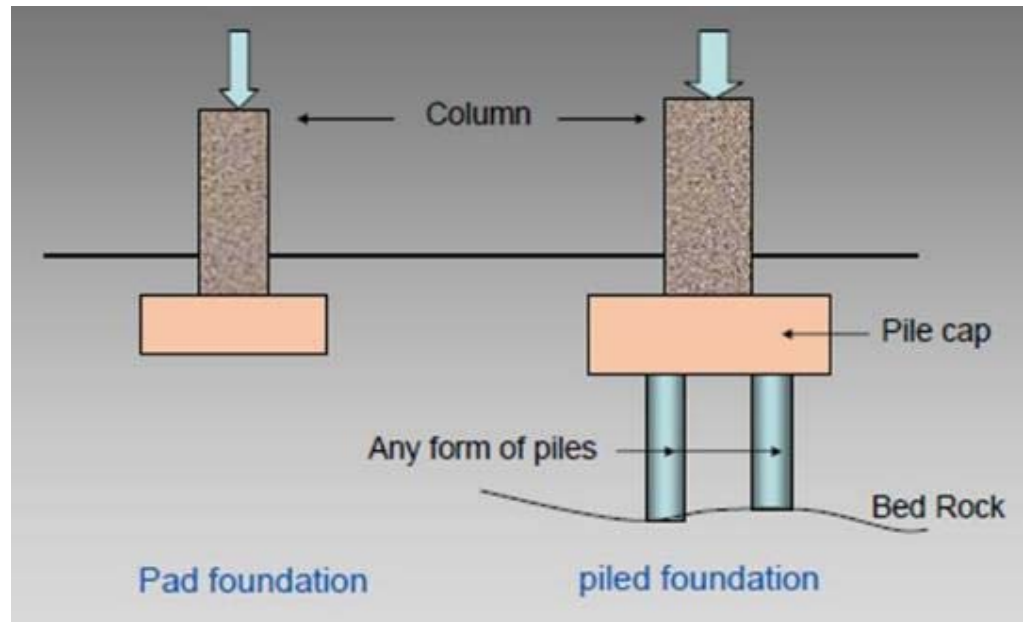
Access Installation



Foundations

There are 2 different types of foundation used on the project:

- **Pad foundations** are used where ground conditions allow a concrete block to be constructed just below the surface. There is a block of concrete under each of the 4 tower legs, each measuring around 4.5m x 4.5m x 1m deep.
- **Piled foundations** are used where ground conditions cannot support the tower loads e.g. peat. On our project, 4 piles are cored down to bed rock on each of the 4 legs and concrete block is constructed on top of the piles to support each of the 4 tower legs



Pile Installation



Tower 13R Piling

Foundation Installation



Tower 58 conventional foundation

Pile cap Installation



Tower 63 pile cap

Tower assembly



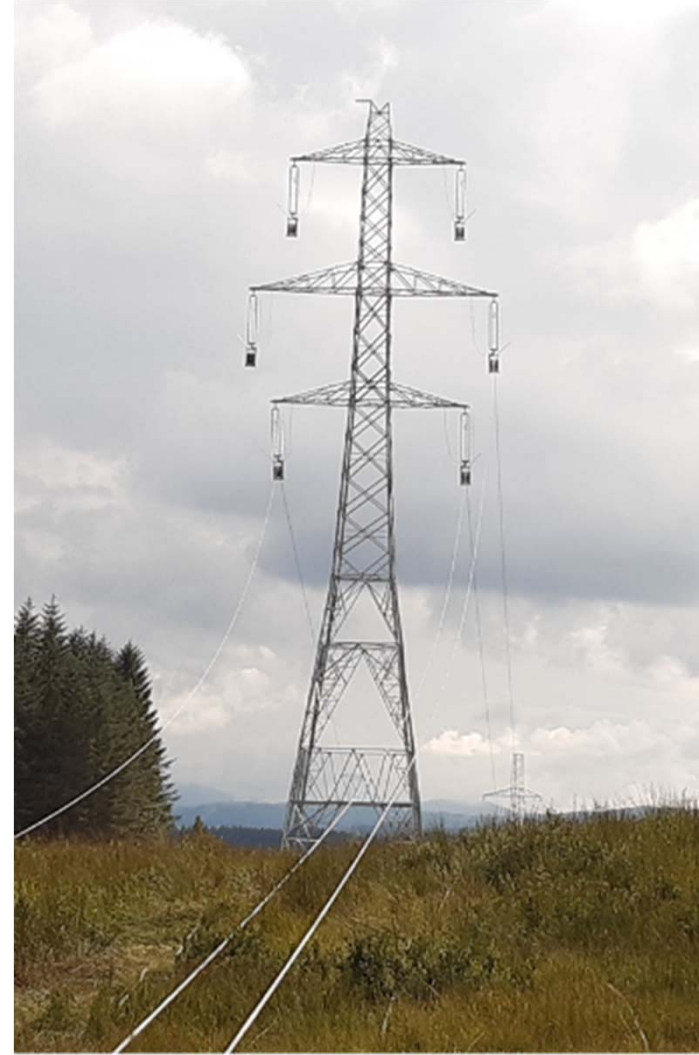
Tower 47 assembly



Tower erection



Wiring trials



Future Activity

Wiring



General discussion /Questions?



Scottish & Southern
Electricity Networks