

Inveraray to Crossaig 275 kV Overhead Line Reinforcement

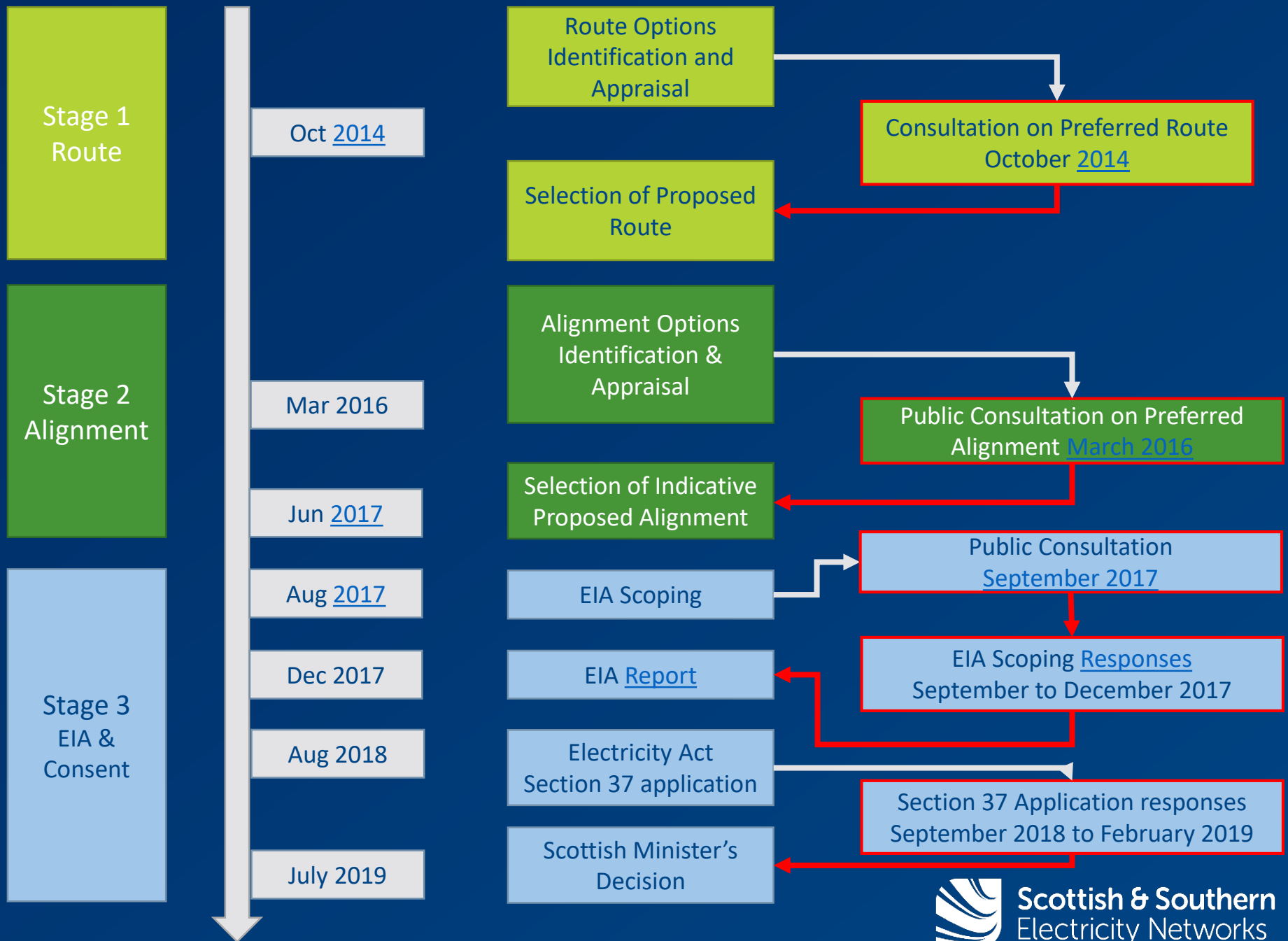
Tarbert and Skipness Community Council

14 November 2019

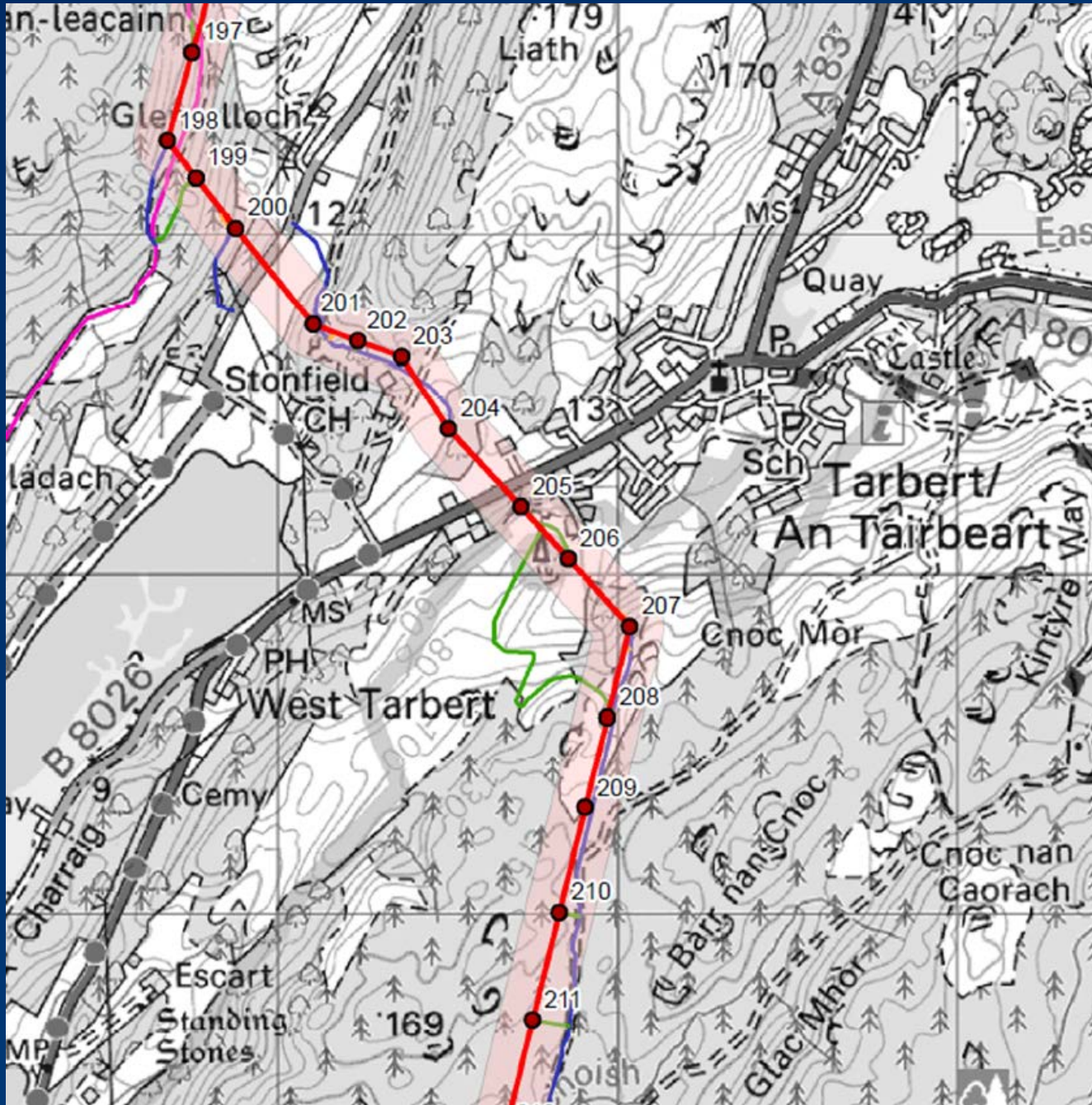


Scottish & Southern
Electricity Networks

Overhead Line Development Process



Decision by Scottish Minister, July 2019



Decision by Scottish Minister - Representations

One of the representations is from a member of the public from Tarbert and they raised a Change.org petition on the website. A petition has been raised with 189 supporters, of which 24 individuals have provided reasoning for their support of the petition. In summary their reasons for signing are:

- Spoil views of the village and be a blight on the landscape;
- Cables should be undergrounded; and
- Impact on tourism.

In determining the application Scottish Ministers have taken into account the matters raised within these representations. Consent is subject to conditions in relation to tower locations and landscaping.

Decision by Scottish Minister - Conditions

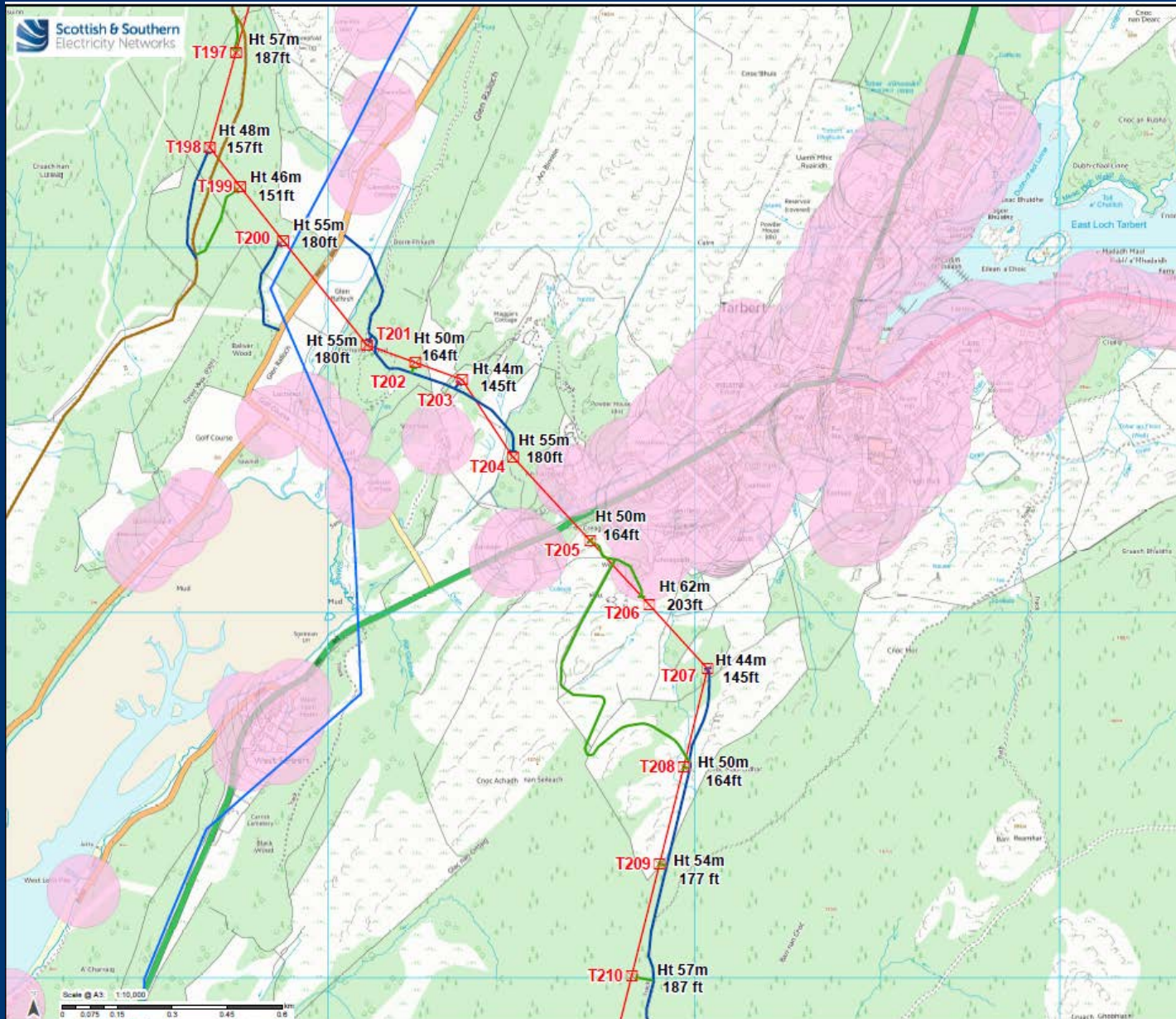
Limits of deviation and micro-siting

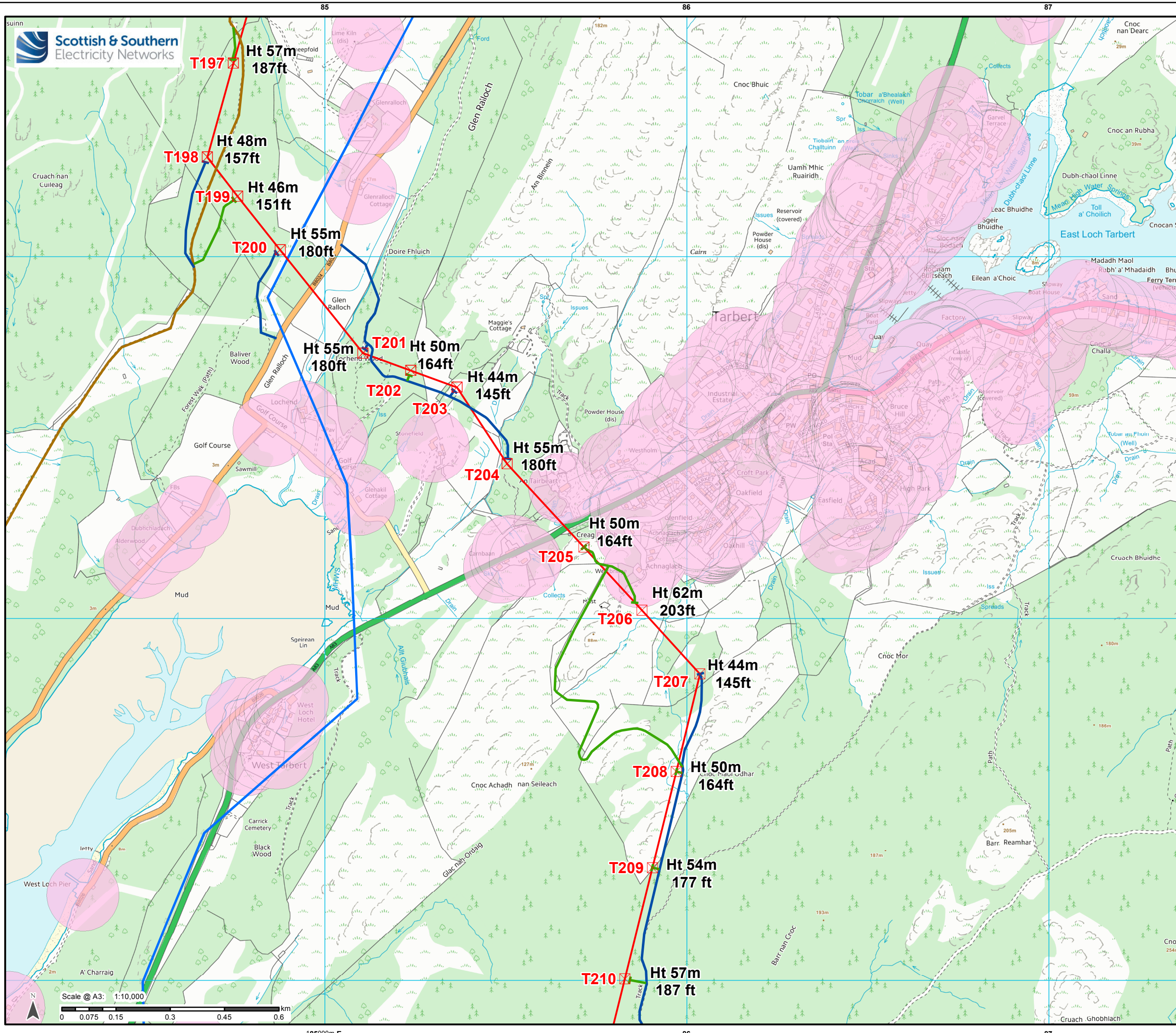
All towers shall be positioned a distance of 100 metres or greater from any residential property unless the proposed position is approved in writing in advance by the Planning Authority.

No tower shall be micro-sited from a position shown on the Approved Plans to another position within 100 metres of a residential property unless the proposed new position is approved in writing in advance by the Planning Authority.

*Reason: To ensure that the Development is built in accordance with the description in the Environmental Impact Assessment (EIA) Report, to allow tolerance for re-siting infrastructure within the limits of deviation so as to take account of local ground conditions and **to reduce impact on residential amenity.***

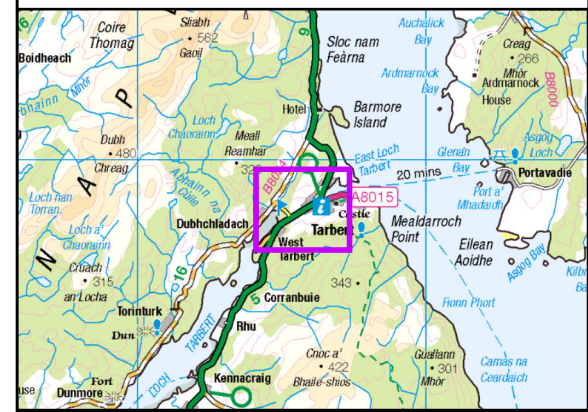
Decision by Scottish Minister, map of tower heights





Legend

- ▣ Towers
- Proposed OHL
- 132kV OHL
- New Stone Access - Permanent
- New Stone Access -
- Existing Access - Upgrade
- Property Buffer (100m)



Reproduced by permission of Ordnance Survey on behalf of HMSO. Crown copyright and database right 2019 all rights reserved. Ordnance Survey Licence number EL273236.

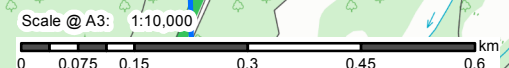
Project No: LT000040
Project: Inveraray to Crossaig

Title: Towers 197 - 210

Drawn by: BJR Date: 05/11/2019

Drawing: LT000040_ENV_015_Towers

67000m N



185000m E

Decision by Scottish Minister - Conditions

Landscape plan

Prior to the construction of Towers 123, 124, 205, 206, 207.... details of proposed landscape mitigation in the form of tree planting shall be submitted to the Planning Authority for their approval or such alternative tree planting proposals as may otherwise be agreed in writing by the Planning Authority.

Reason: To mitigate local landscape impacts of the Development.

Landscape plan – 3D model



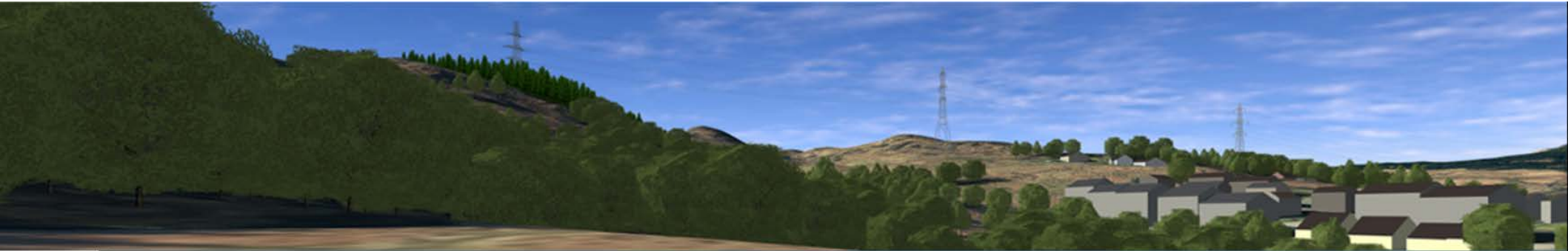
To view the full movie of the 3D model go to:

<https://www.ssen-transmission.co.uk/news-views/articles/2018/8/ssen-introduces-3d-modelling-to-its-inveraray-crossaig-proposals/>

Viewpoint 18a: Southern Fringe of Tarbert



Viewpoint 18a – 3D model view



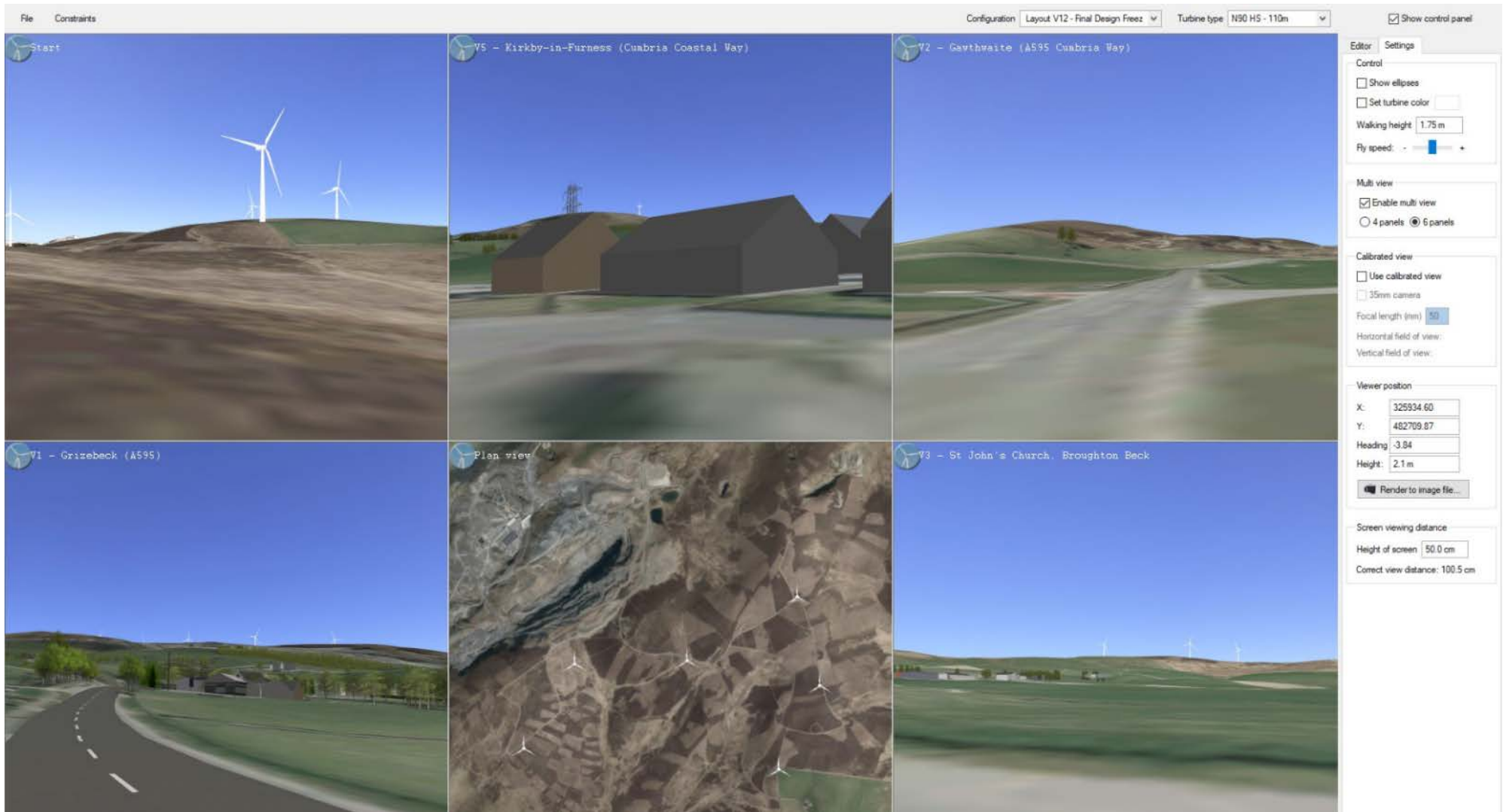
Tarbert Marina – 3D model view



Tarbert castle – 3D model view

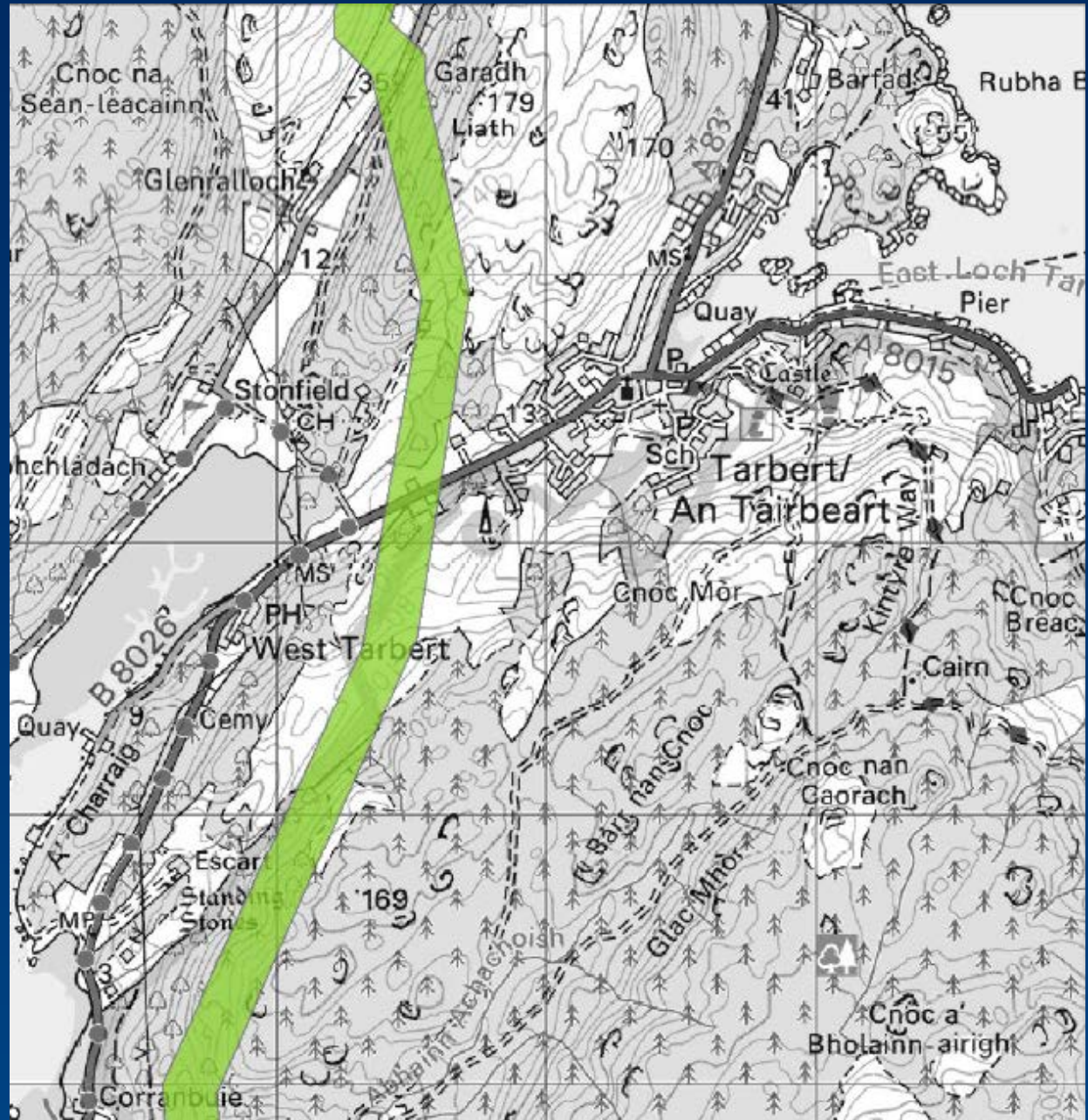


3D model landscape design



October 2014

Route shown in Public Exhibitions in October 2014



Route Options and Preferred Route

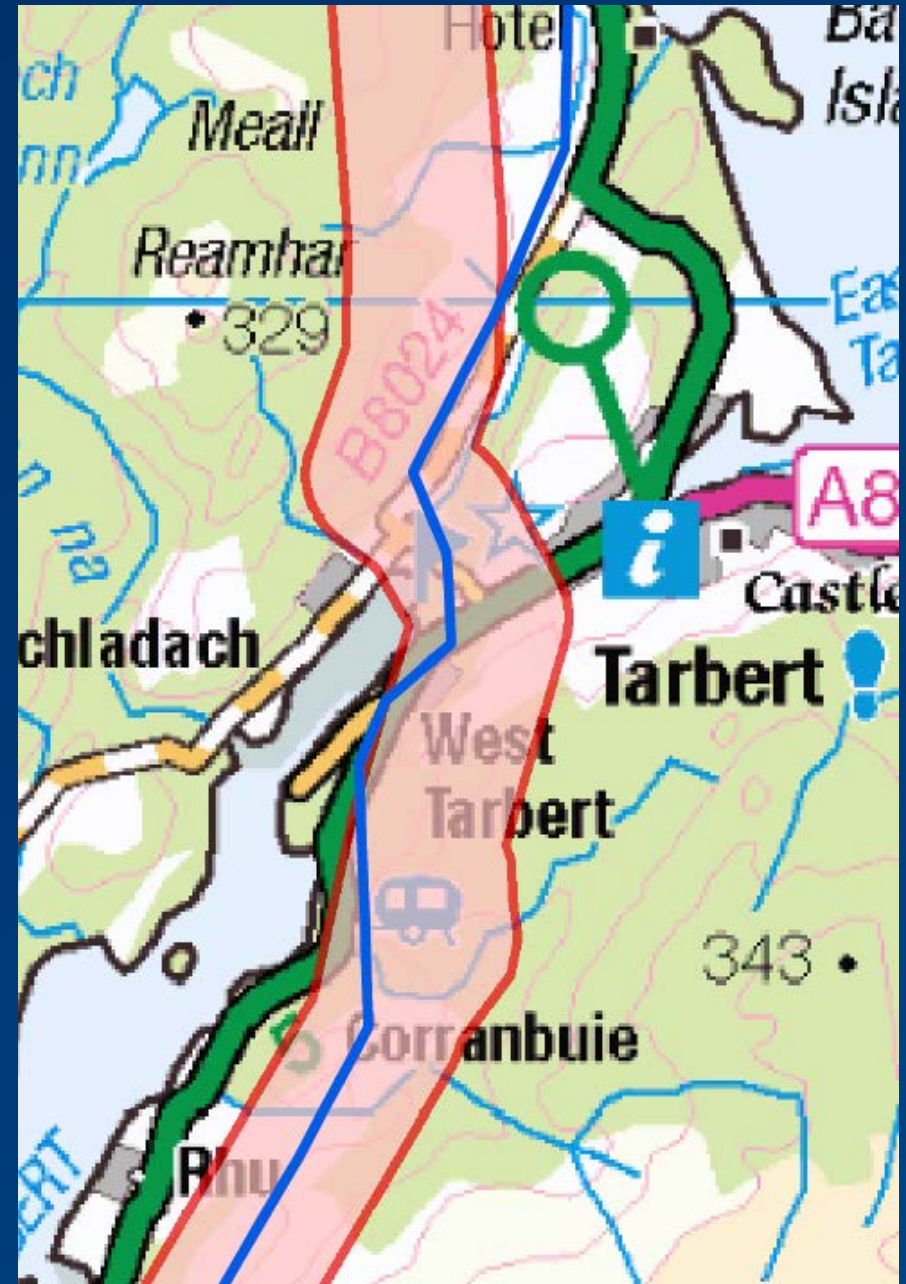


Scottish & Southern
Electricity Networks

SHE Transmission

March 2016

Route shown in Public Exhibitions
in March 2016



Proposed Route in Public exhibition (existing OHL in blue)



Scottish & Southern
Electricity Networks

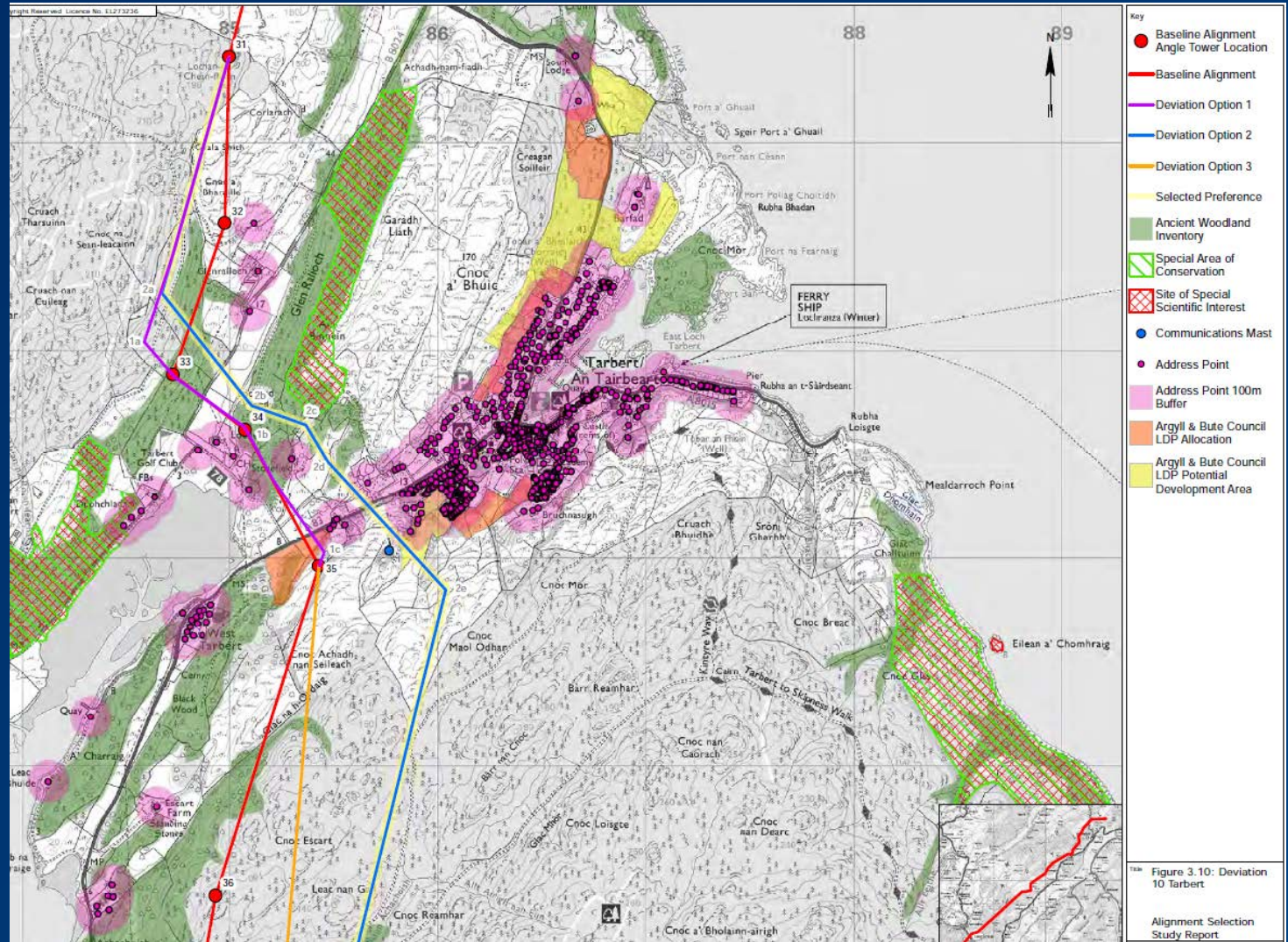
SHE Transmission

June 2017

Baseline alignment is preferred from a cost perspective

Option 3 is preferred from a technical perspective

Option 2 preferred environmental due in part to improvements on the baseline from a landscape and visual perspective on the loch end and the Rocky Mosaic LCT.



Option 2 (blue) was selected as the overall preferred option.

To see full report of the description of options and the choice of preferred alignment go to:

<https://www.ssen-transmission.co.uk/media/2250/inveraray-to-crossaig-275-kv-ohl-alignment-selection-consultation-document.pdf>

Alternative Alignment Environmental Constraints

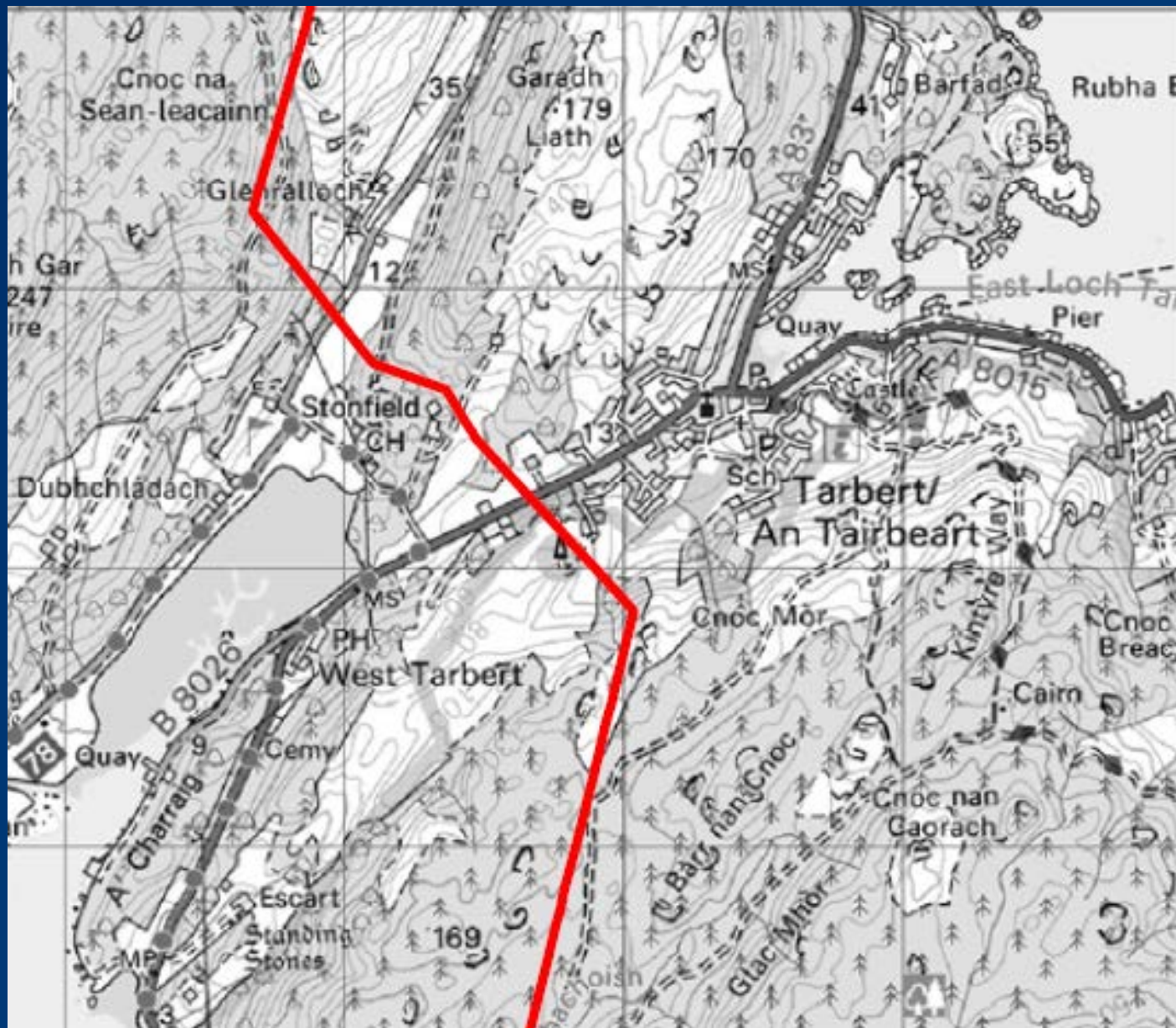


Scottish & Southern
Electricity Networks

SHE Transmission

August 2017

Alignment shown
in Public Exhibitions
in September 2017



EIA Scoping Alignment



Scottish & Southern
Electricity Networks

SHE Transmission



Scottish & Southern
Electricity Networks