

ERROCHTY SUB-STATION

B846

146

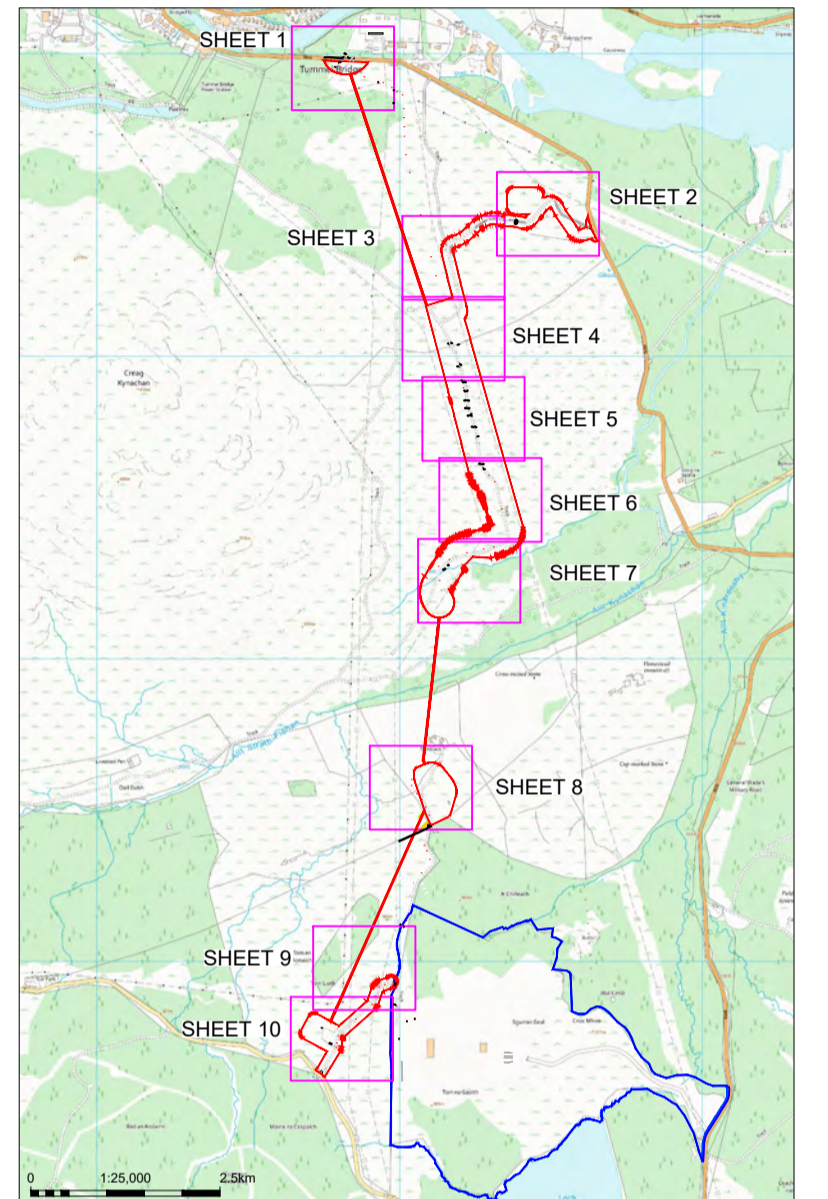
Tummel Bridge

NOTES

1. ALL DIMENSIONS ARE IN MILLIMETRES UNLESS NOTED OTHERWISE.
2. ONLY SCALE FOR PLANNING PURPOSES.

LEGEND

- RED LINE BOUNDARY
- 150.00 CONTOUR AND LEVELS / HEIGHT
- LAND OWNED BY 'SCOTTISH HYDRO ELECTRIC TRANSMISSION PLC'



REFERENCE DOCUMENTS

- KE-LT307-WOOD-ENV-XX-PLN-OE-0001 - LOCATION PLAN
- KE-LT307-WOOD-ENV-XX-PLN-OE-0002 - SUPPLEMENTARY LOCATION PLAN
- KE-LT307-WOOD-XX-XX-PLN-X-0004 - PROPOSED SITE PLANS
- KE-LT307-WOOD-XX-XX-PLN-X-0008 - EXISTING / PROPOSED SITE LEVELS



FOR PLANNING

| REV | NO | DATE | BY | CHECKED | APPROVED | STATUS |
|----------|----------|----------|-------|-----------|-----------|----------|
| P06 | P06 | 27.03.26 | PA | - | TP | TP |
| Wood REV | SSEN REV | Date | Drawn | CAD Check | ENG Check | Approver |
| P05 | P05 | 18.03.26 | MK | - | TP | TP |
| Wood REV | SSEN REV | Date | Drawn | CAD Check | ENG Check | Approver |
| P04 | P04 | 19.02.26 | CDT | PBM | TP | FW |
| Wood REV | SSEN REV | Date | Drawn | CAD Check | ENG Check | Approver |
| P03 | P03 | 28.01.26 | CDT | PBM | TP | FW |
| Wood REV | SSEN REV | Date | Drawn | CAD Check | ENG Check | Approver |
| P02 | P02 | 10.07.25 | CDT | PBM | TP | AB |
| Wood REV | SSEN REV | Date | Drawn | CAD Check | ENG Check | Approver |
| P01 | P01 | 23.05.25 | CDT | PBM | TP | AB |
| Wood REV | SSEN REV | Date | Drawn | CAD Check | ENG Check | Approver |

| | | | |
|---|--|------------|-------|
| Client | Scottish & Southern Electricity Networks | Contractor | wood. |
| <small>GROUND FLOOR, AFON BUILDING, 2 RIVER MEAD, WORTHING ROAD, WIDFORDHAM, RH12 1TL</small> | | | |

EXISTING SITE PLAN

| | | | | | |
|--------------------|---|------------|----------|---------------|-------|
| Site | KINARDOCHY TO ERROCHTY UNDERGROUND CABLE - COMPOUND, JUNCTION AND TRACK WORKS | Sheet Size | A1 | Status Code | S2 |
| SSEN Scheme Number | LT000307 | REV No. | P06 | Security Code | SC |
| Wood Drawing No. | 750725-PL-MAP-0003 | SHEET No. | 01 of 10 | Scale | 1:500 |
| SSEN Drawing No. | KE-LT307-WOOD-XX-XX-PLN-X-0003 | | | | |

