

Kinardochy Newsletter

March 2024

The project has a dedicated website, please scan the QR code to be taken to the project website or use the following URL: bit.ly/3LEni4H



Construction works are progressing on SSEN Transmission’s Kinardochy substation project which will see the construction of a new 275/400kV electrical substation three kilometres south from Tummel Bridge.

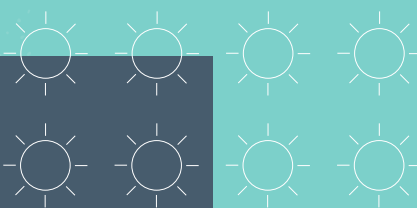
The equipment being installed will play a critical role in ensuring voltage limits on the transmission network remain stable and power flows can be efficiently managed allowing for the connection of new renewable generation to the grid. Safety is always our first priority at SSEN Transmission and with this in mind, we ask that you please remain vigilant of signage or direction around the construction works.

Works carried out to date

- The two-steel lattice overhead line terminal towers have been fully constructed in readiness for final connection to the substation.
- The permanent access road to the substation is fully complete including the white lining and snow pole demarcation. Civil works across the platform are nearing completion with the final layer of stone chippings now being spread.
- The Gas Insulated Switchgear and Busbar (GIS and GIB) installation works are continuing to make good progress.

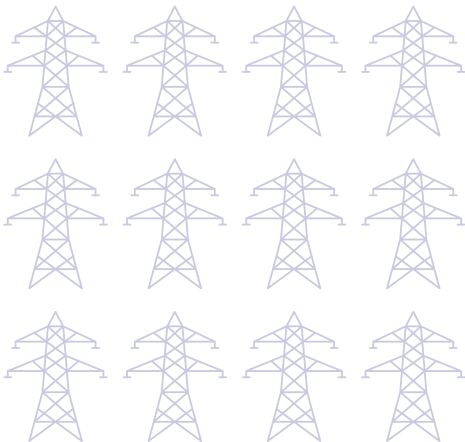


- External works have commenced on the build of the reactive compensation electrical equipment.
- Most of the site control and protection cabling have been installed, with connection works ongoing.



Works in the next quarter

- Completion of the Gas Insulated Switchgear and Busbar (GIS and GIB) installation works.
- Electrical testing and commissioning of all substation electrical plant and equipment will commence in readiness for final energisation.
- Final deliveries for the reactive compensation equipment and commencement of the internal construction works.
- Landscaping, tree and shrub planting and reinstatement out with the substation boundary scheduled to commence end of Q2.



If you have any questions, please do not hesitate to contact our Community Liaison Manager:

Louise Anderson
Lead Community Liaison Manager
SSEN Transmission, 200 Dunkeld Road, Perth, PH1 3GH

Tel: 01738 341 975
Mobile: +44 (0) 7384 454 233
Email: louise.anderson@sse.com

 [ssen-transmission.co.uk](https://www.ssen-transmission.co.uk)

 SSEN Transmission

 SSEN-Transmission

 SSETransmission