



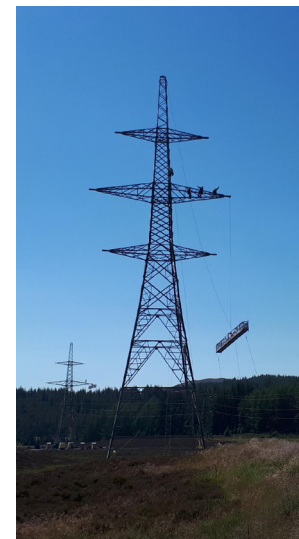
The project has a dedicated website, please scan the above QR code to be taken to the project website or use the following URL:

<https://bit.ly/3LEni4H>

Construction works are progressing on SSEN Transmission's Kinardochy substation project which will see the construction of a new 275/400kV electrical substation 3 kilometres south from Tummel Bridge. The equipment being installed will play a critical role in ensuring voltage limits on the transmission network remain stable and power flows can be efficiently managed allowing for the connection of new renewable generation to the grid and enabling clean energy to be transported to where it is needed most. Safety is always our first priority at SSEN Transmission and with this in mind, we ask that you please remain vigilant of signage or direction around the construction works.

Works carried out to date

- Formation of access roads and site compounds, including construction of the main culvert to cross the Allt Kinardochy water course.
- Excavation and processing of 250,000m³ of rock to form the substation platform.
- Pouring of foundations for the new building and main transformer.
- Installation of site drainage.
- Erection of the site perimeter fencing (ongoing).
- Diversion of the Beauldy Denny transmission line on to two temporary towers.



Planned works - Quarter 4 2022

- Completion of exterior works on the two main buildings.
- Construction of the remaining equipment bases.
- Installation of drainage across the substation platform.
- Tree cutting on the public roads heading towards site, for the transformer delivery in 2023.

Community engagement

Next door to our site boundary lies the first community-led land buy-out in Perthshire: DùnCoillich. Recently, the team helped out at the DùnCoillich 20th Anniversary Bioblitz, where willing surveyors record as many species as they can. The event was a great success and the final species count was just under 400!



If you have any questions, please do not hesitate to contact the Community Liaison Manager:

Louise Anderson
SSEN Transmission,
Inveralmond House, 200 Dunkeld Road,
Perth, PH1 3AQ (Return Address)

Tel: 01738 341 975
Mobile: +44 (0) 7384 454 233
Email: louise.anderson@sse.com