

# Landscape Character Type 022

## Broad Valley Lowlands- Aberdeenshire

### Key Characteristics<sup>4</sup>

- A broad and generally gently undulating strath with some flatter basins.
- Steep scarp of the Mounth uplands rising steeply to the north-west and low rounded ridge of Garvock Hill provides a lesser degree of containment along the southeastern boundary.
- Predominantly intensive agriculture with distinctive patchwork of large open fields divided by ditches and fences interspersed with small conifer woodlands.
- More folded terrain at the foot of The Mounth uplands, with a number of small rounded hills and small incised valleys, supporting diverse policy woodlands and well-managed farmland.
- Mature beech woodlands and avenues with stone walls associated with estates at the base of slopes.
- Pockets of rowan and birch woodland along watercourses stand out within this expansive plain.
- Small traditional villages and numerous farms, constructed of warm red stone, dotted throughout the countryside.
- Landscape forms a major communications corridor accommodating the A90, the East Coast railway and transmission line.
- Striking contrast of open, expansive strath and adjacent uplands.

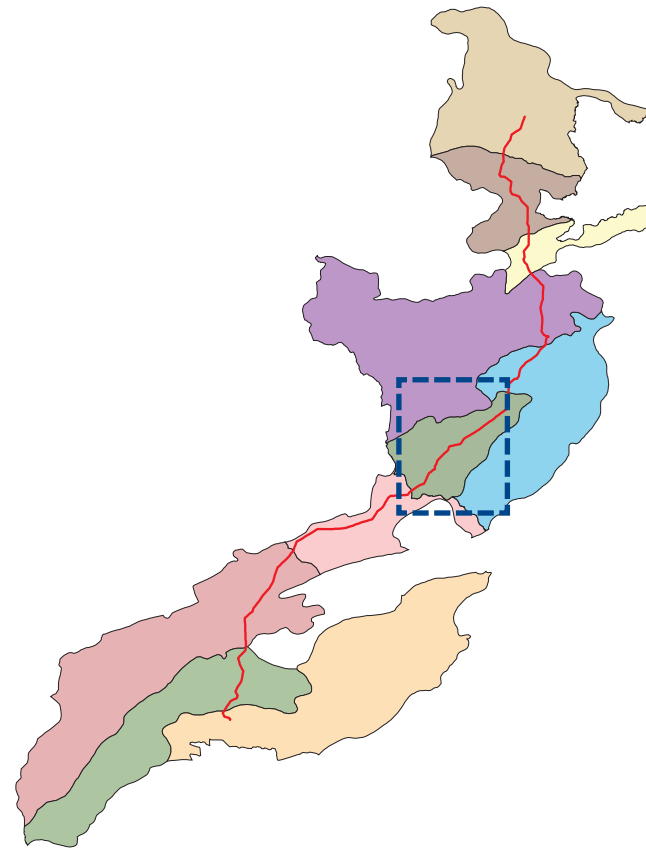

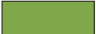




Plate 9.6.15. Location Map- Broad Valley Lowlands- Aberdeenshire

**KEY**

-  Key affected areas
-  Woodlands and green areas
-  Waterbodies
-  Broad Valley Lowlands- Aberdeenshire

### Description

This LCT forms part of the Howe of the Mearns, where the landform consists of a broad and gently undulating strath. Landcover is predominantly arable agriculture with a distinctive patchwork of medium to large-scale open fields, divided by ditches and fences.

4. NatureScot, 2019. National Landscape Character Assessment. Landscape Character Type 22: Broad Valley Lowlands - Aberdeenshire. [Online] Available at: [https://www.nature.scot/sites/default/files/LCA/LCT\\_022\\_-\\_Broad\\_Valley\\_Lowlands\\_-\\_Aberdeenshire\\_-\\_Final.pdf](https://www.nature.scot/sites/default/files/LCA/LCT_022_-_Broad_Valley_Lowlands_-_Aberdeenshire_-_Final.pdf)

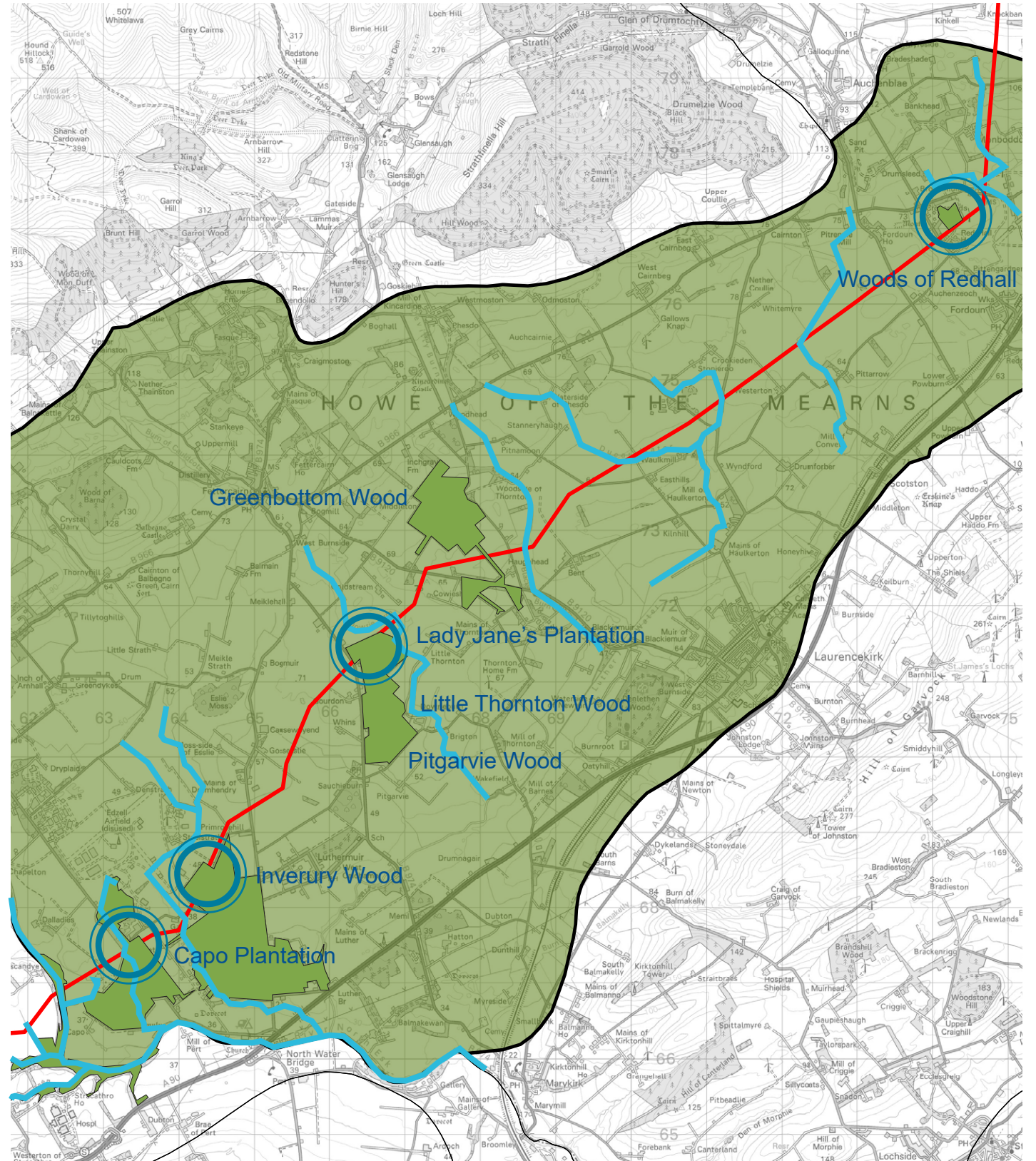


Plate 9.6.16. Key Areas along Proposed Development through Broad Valley Lowlands- Aberdeenshire Character Area



# Landscape Character Type 024

## Coastal Farmland Ridges and Hills

### Key Characteristics<sup>5</sup>

- A large scale and open landscape of smoothly rolling ridges and shallow valleys.
- Narrow ravines cutting through the ridges towards the coast.
- Large fields of arable land and pasture with red-pink soils present a rich tapestry of colours with the strong patchwork pattern influenced by different crops and ploughed fields.
- Few hedges or dykes.
- Sparse woodland with coniferous shelterbelts planted on some ridges. Broadleaved Woodlands, although small, commonly emphasise the landforms, tracing watercourses or planted on knolls.
- Scattered settlement pattern with varied architectural styles including some large stately homes, farms and traditional cottages, often built of local red sandstone.
- Comprehensive network of minor roads, as well as the main A90 which provides glimpses of the sea.
- A concentration of Bronze Age burial cairns often focussed on hilltops with views to the sea.
- Telecommunication masts located on the highest hills.
- Frequent single and small groups of large wind turbines.
- Strong coastal influence particularly where more open slopes fall gently to the top of cliffs or raised beach allowing views of the sea.
- Sea views to the east and views westwards across the Howe of the Mearns.

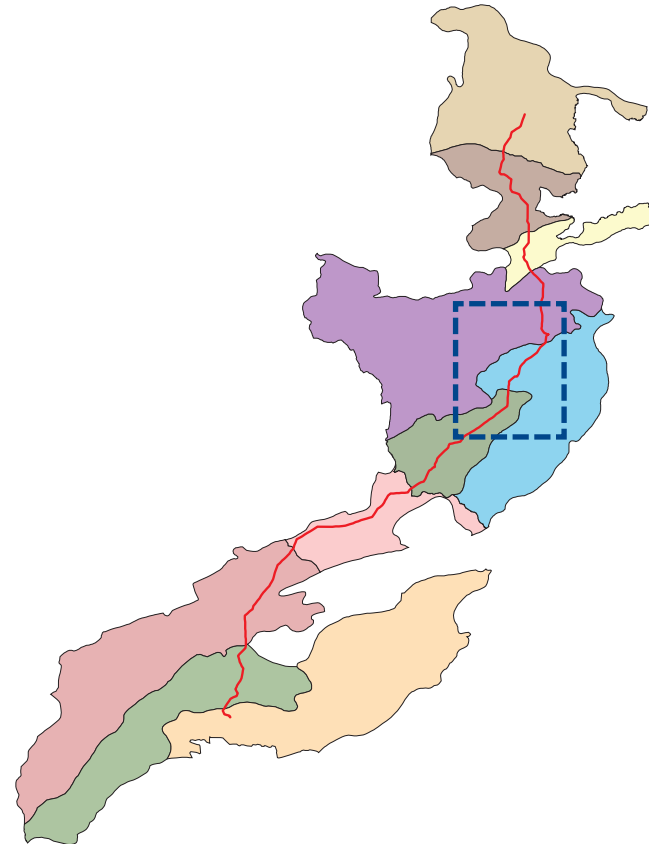
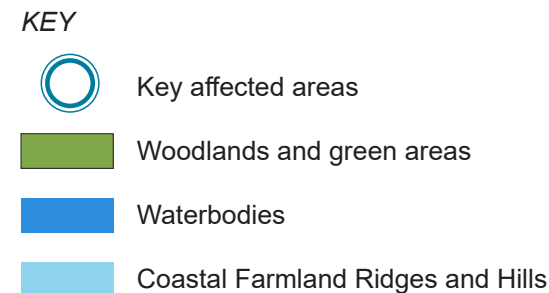


Plate 9.6.17. Location Map- Coastal Farmland Ridges and Hills



### Description

This LCT extends across a large area of rolling arable and pastoral ridge lines that are dissected by narrow valleys, extending from southeast of Laurencekirk towards the northwestern peripheries of Stonehaven in the north.

5. NatureScot, 2019. National Landscape Character Assessment. Character Type 24: Coastal Farmed Ridges and Hills – Aberdeenshire. [Online] Available at: [https://www.nature.scot/sites/default/files/LCA/LCT\\_024\\_-\\_Coastal\\_Farmed\\_Ridges\\_and\\_Hills\\_-\\_Aberdeenshire\\_-\\_Final.pdf](https://www.nature.scot/sites/default/files/LCA/LCT_024_-_Coastal_Farmed_Ridges_and_Hills_-_Aberdeenshire_-_Final.pdf)

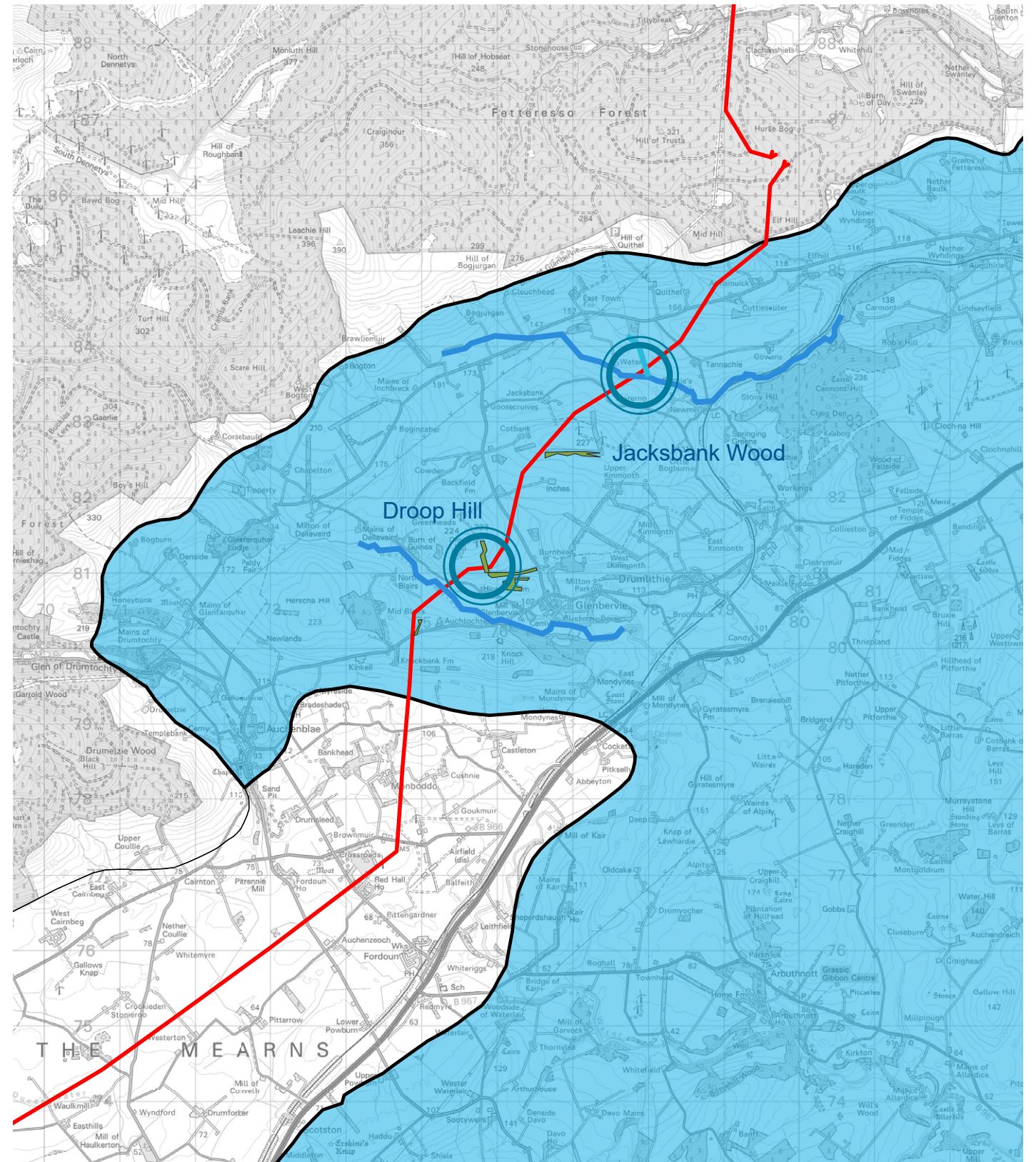


Plate 9.6.18. Key Areas along Proposed Development through Coastal Farmland Ridges and Hills Character Area