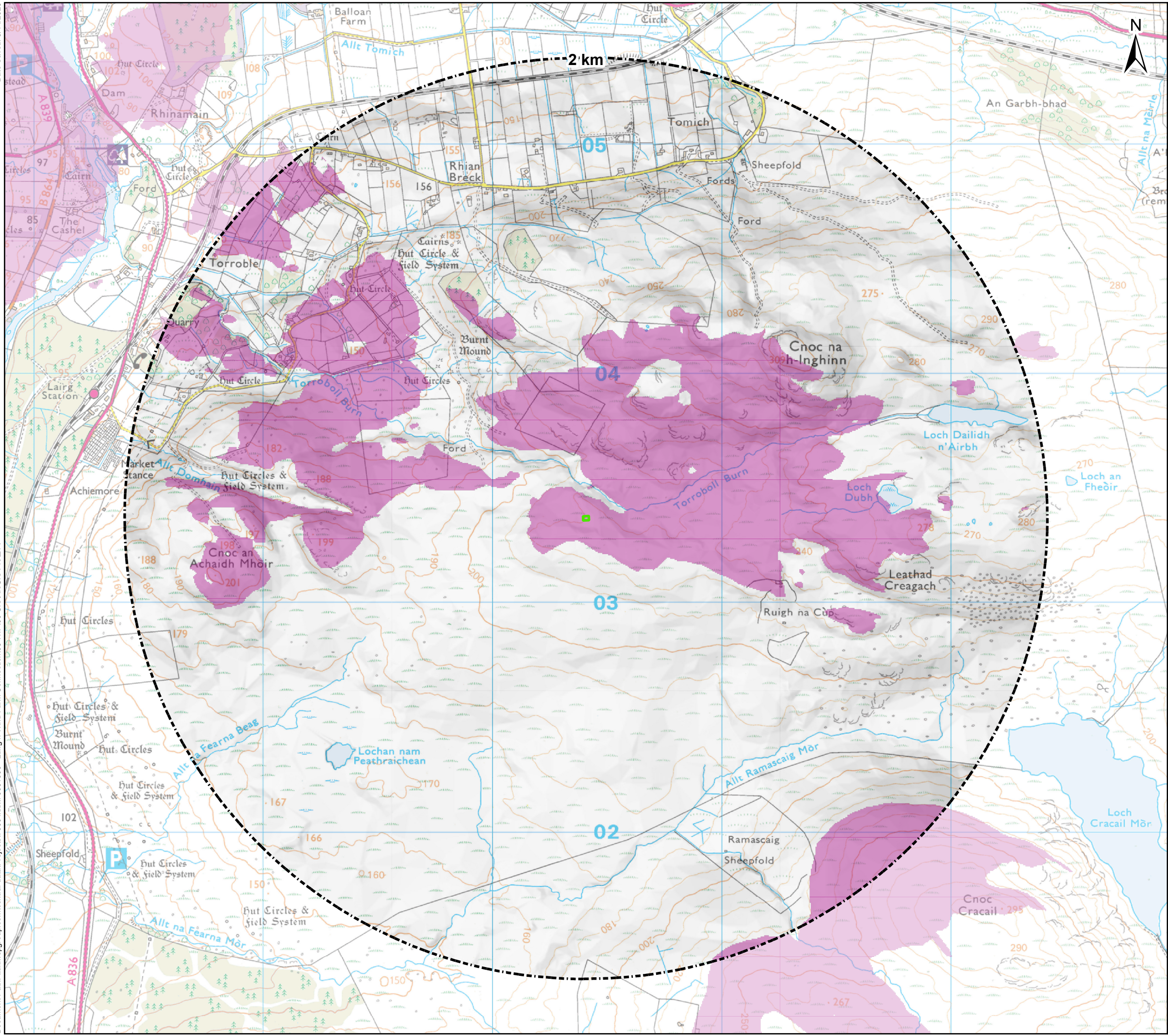


Date Saved: 8/14/2023
Document Path: \\uk.wsgroup.com\central\data\Projects\7009\xxxx\70091396 - Lairg II Wind Farm Connection\03 WIP\06 GIS\ArcGIS Pro\ZTV

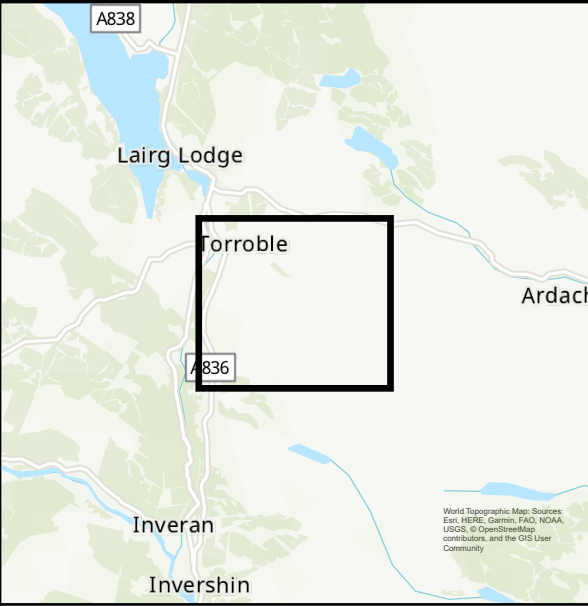


Legend

- CSE Compound Platform
- 2km Buffer
- Zone of Theoretical Visibility

Note

The ZTV is calculated based on the CSE Compound platform height of 5m and a viewer height of 1.5m above ground level. The terrain model assumes bare ground and is derived from OS Terrain 5 data. Earth curvature and atmosphere refraction have been taken into account.



0 100 200 300 400 500
Metres

Client: **Scottish & Southern**
Electricity Networks
TRANSMISSION

Project: **Lairg II Wind Farm Connection**

Title: **Figure 7.2 - Zone of Theoretical Visibility**

Date: 14/08/2023 Scale: 16,000 @ A3
Drawn: CB Checked: IM Approved: LW
Drawing Number: 70091396-010