

Legend

- Indicative Loch Fearn PSH Substation
- Proposed Loch Lundie Substation Platform
- Corridor
- Western Route Option**
 - Route Option 1a
 - Route Option 1b
 - Route Option 1c
- Eastern Route Option**
 - Route Option 2a
 - Route Option 2b
 - Route Option 2c
- Designations**
 - Site of Special Scientific Interest (SSSI)
 - Special Protection Area (SPA)
- Local Hydrology**
 - Watercourse (OS Openmap Local)
 - Waterbody (OS Open Map Local)
 - Future Risk of Flooding (2080s) from Rivers (1 in 200 Year Event)
 - Drinking Water Protection Area (Surface Catchment)
 - The Highland Council Private Water Supply
 - SEPA CAR Licenced Site

Note

All Routes Lie Entirely within Northern Highlands Groundwater Drinking Water Protection Zone

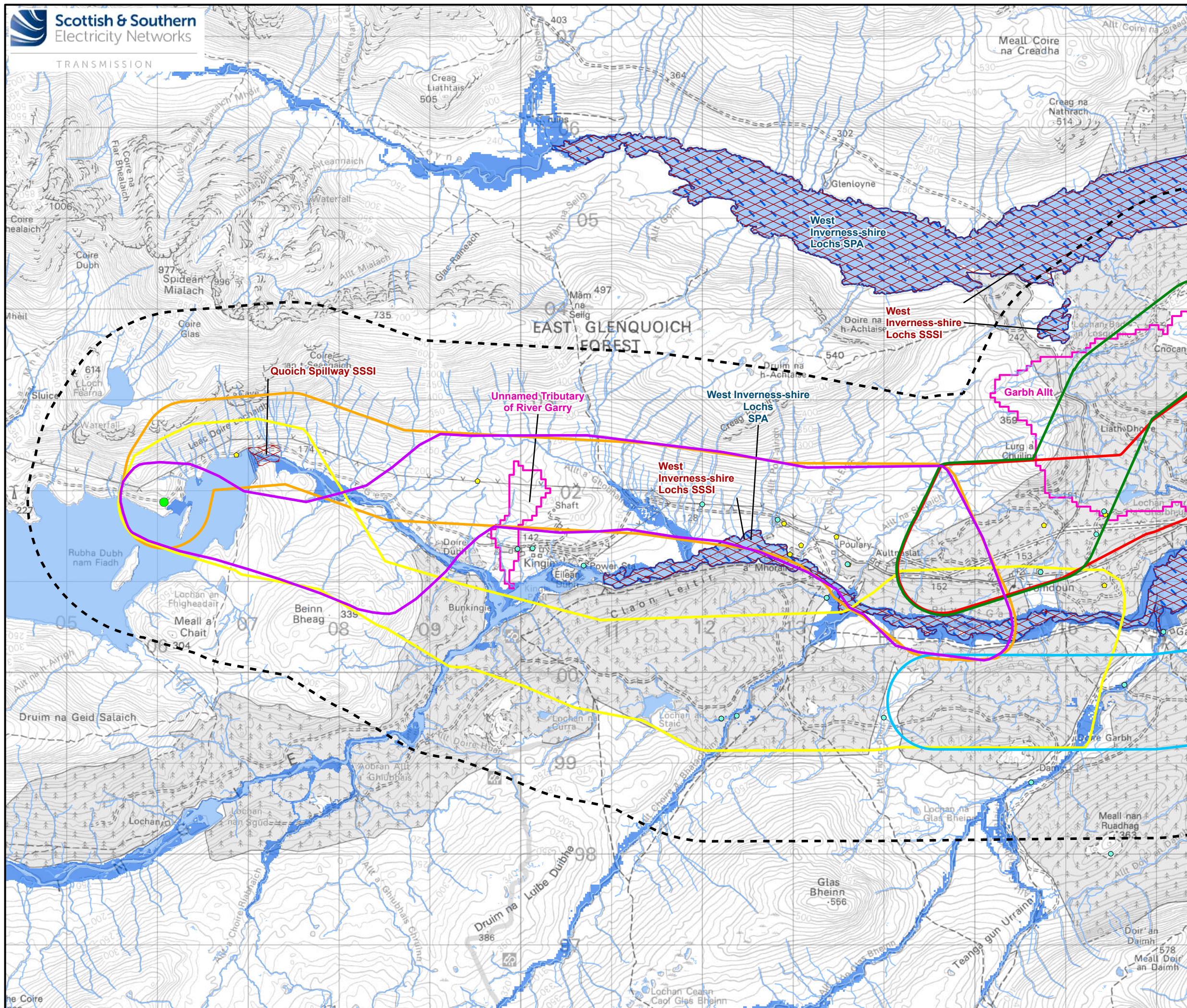
N
0 0.5 1 2 Kilometres
Scale - 1:90,000 @ A3

Reproduced by permission of Ordnance Survey on behalf of HMSO. Crown copyright and database right 2023 all rights reserved. Ordnance Survey Licence number 100022432. Contains THC, SNH and SEPA information licensed under the Open Government Licence v3.0 (2023)

Project: LT000506-507- Fearn PSH Grid
Connection: Consultation Document

Title: Figure 5.1 - Local Hydrology
Overview

Drawn by: QF Date: 24/02/2025

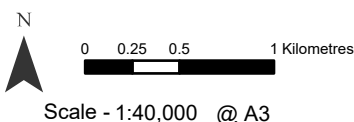


Legend

- Indicative Loch Fearn PSH Substation
- Proposed Loch Lundie Substation Platform
- Corridor
- Western Route Option**
 - Route Option 1a
 - Route Option 1b
 - Route Option 1c
- Eastern Route Option**
 - Route Option 2a
 - Route Option 2b
 - Route Option 2c
- Designations**
 - Site of Special Scientific Interest (SSSI)
 - Special Protection Area (SPA)
- Local Hydrology**
 - Watercourse (OS Openmap Local)
 - Waterbody (OS Open Map Local)
 - Future Risk of Flooding (2080s) from Rivers (1 in 200 Year Event)
 - Drinking Water Protection Area (Surface Catchment)
 - The Highland Council Private Water Supply
 - SEPA CAR Licenced Site

Note

All Routes Lie Entirely within Northern Highlands Groundwater Drinking Water Protection Zone

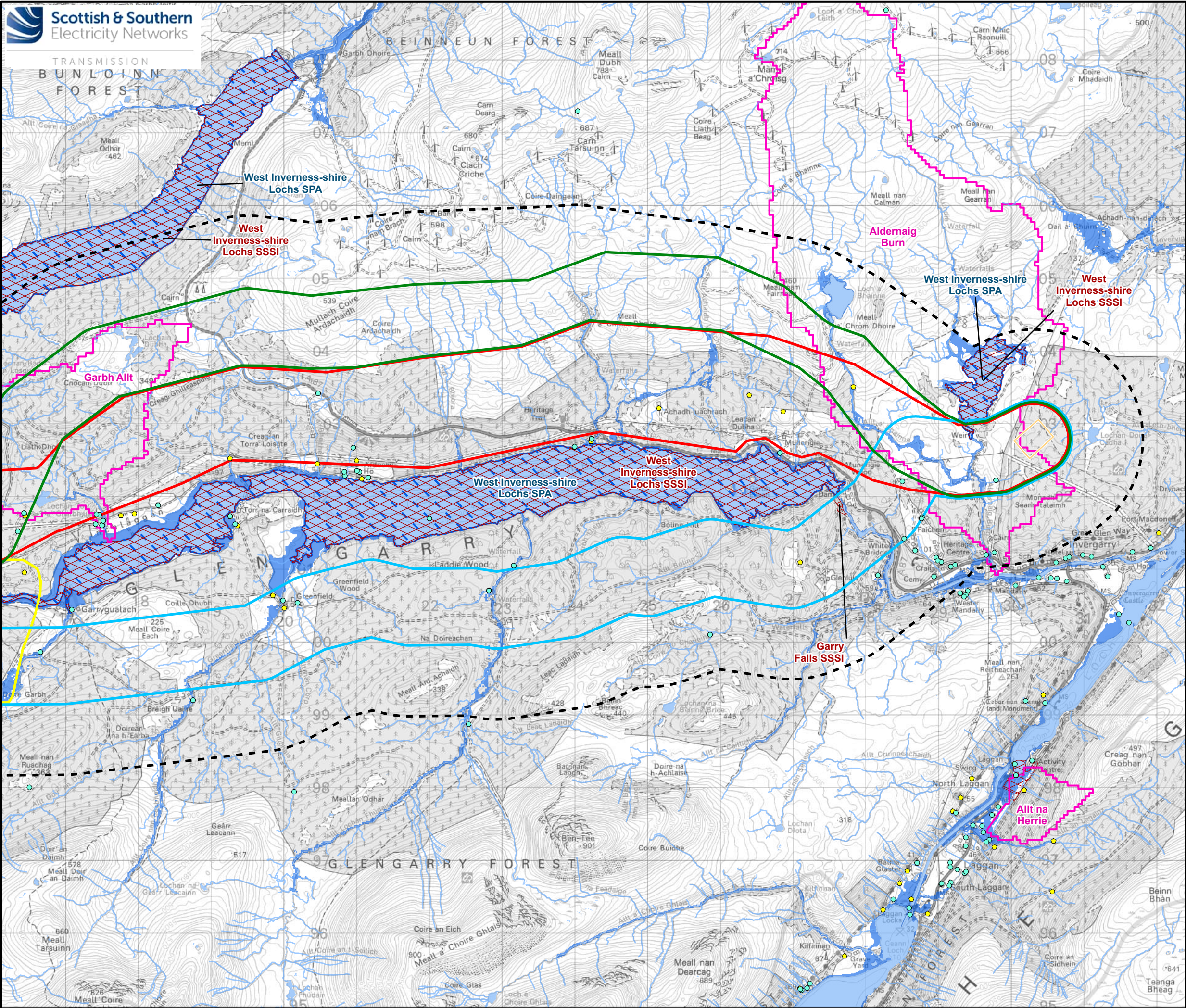


Reproduced by permission of Ordnance Survey on behalf of HMSO. Crown copyright and database right 2023 all rights reserved. Ordnance Survey Licence number 100022432. Contains THC, SNH and SEPA information licensed under the Open Government Licence v3.0 (2023)

Project: LT000506-507- Fearn PSH Grid
Connection: Consultation Document

Title: Figure 5.2 - Local Hydrology
Western Route Options

Drawn by: QF Date: 24/02/2025



Legend

Proposed Loch Lundie Substation Platform

Corridor

Western Route Option

Route Option 1b

Eastern Route Option

Route Option 2a

Route Option 2b

Route Option 2c

Designations

Site of Special Scientific Interest (SSSI)

Special Protection Area (SPA)

Local Hydrology

Watercourse (OS Openmap Local)

Waterbody (OS Open Map Local)

Future Risk of Flooding (2080s) from Rivers (1 in 200 Year Event)

Drinking Water Protection Area (Surface Catchment)

The Highland Council Private Water Supply

SEPA CAR Licenced Site

Note

All Routes Lie Entirely within Northern Highlands Groundwater Drinking Water Protection Zone

N

00.30.61.2

Kilometres

Scale - 1:50,000 @ A3

Reproduced by permission of Ordnance Survey on behalf of HMSO. Crown copyright and database right 2023 all rights reserved. Ordnance Survey Licence number 100022432. Contains THC, SNH and SEPA information licensed under the Open Government Licence v3.0 (2023)

Project: LT000506-507- Fearna PSH Grid
Connection: Consultation Document

Title: Figure 5.3 - Local Hydrology
Eastern Route Options

Drawn by: QF Date: 24/02/2025