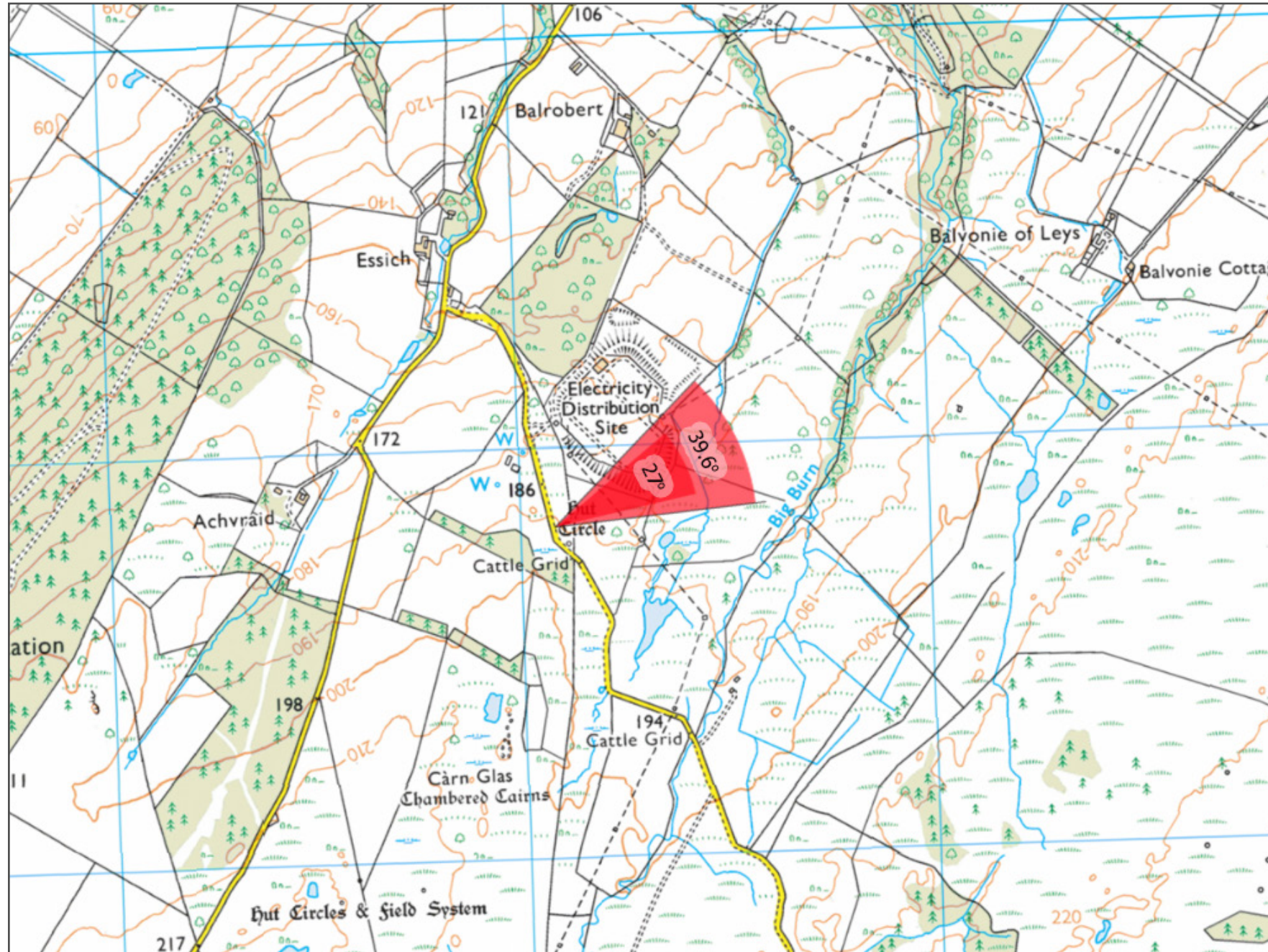


Figure: 1.1 - Viewpoint 1:



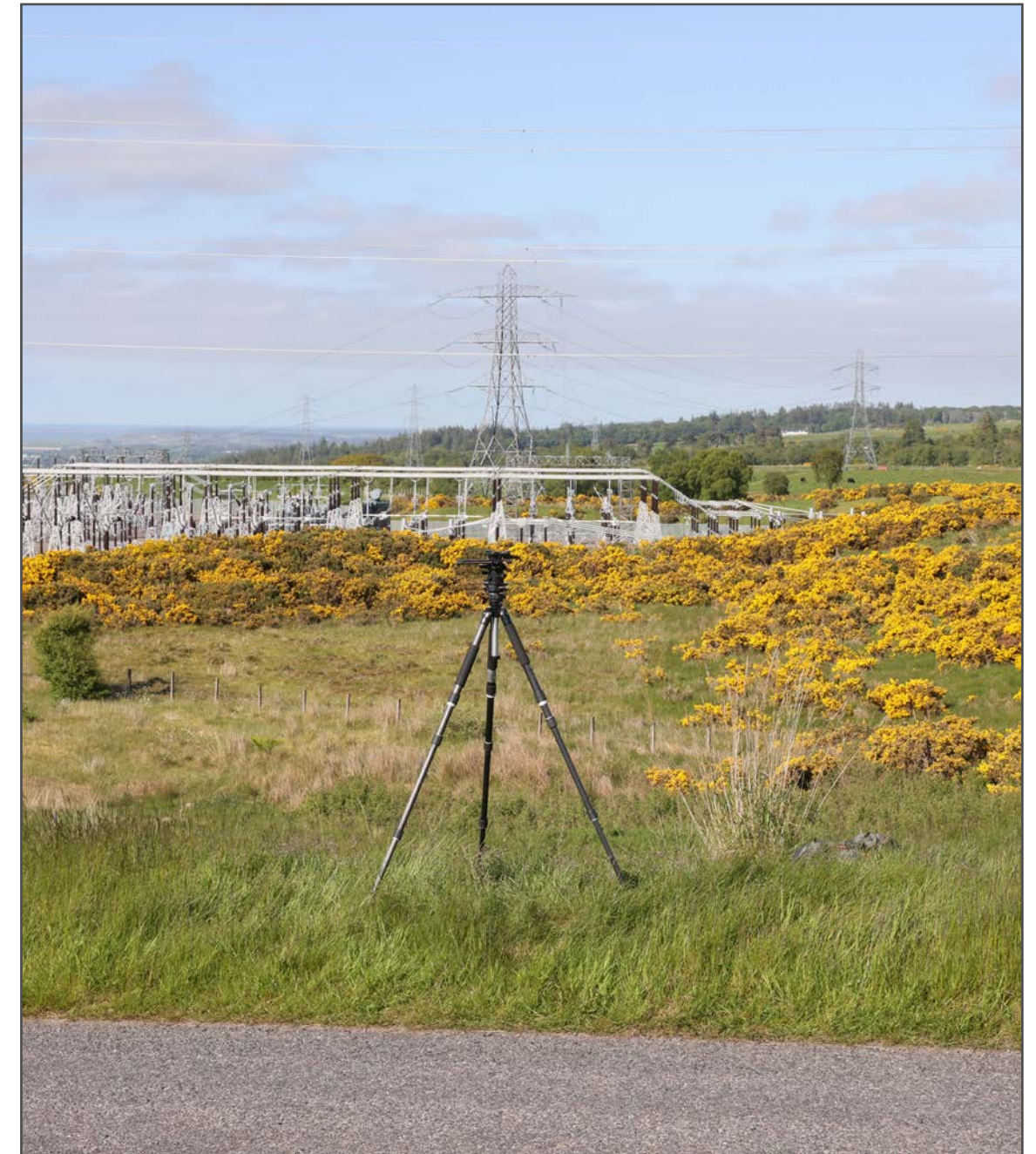
Grid Reference: 265090 838793

Distance to project 285m

AOD: 194m

This viewpoint is located approximately 8km south of Inverness

Travel south out of Inverness on A82. Take the first exit at the roundabout to join the A8082. Follow the A8082 through three roundabouts to join Holm Road. Take the third exit on the roundabout onto Essich Road and continue along Essich Road for approx 3km. Turn Left towards Bunachton and Dunlichity. Continue for approx 650m. The viewpoint location is on the roadside as shown in the photograph above.



Extent of 50mm single frame image



Figure: 1.2
Viewpoint 1
Unnamed Road south of the development

Distance to project 285m Camera: Canon EOS R5 Focal Length: 50mm vertical (27°) x 28mm horizontal (65.5°) Camera height: 1.5m Date: 01/06/2023 17:15

The images contained on this page and the following page are not representative of scale and distance from the actual viewpoint and show the wind farm development in its wider landscape context only.

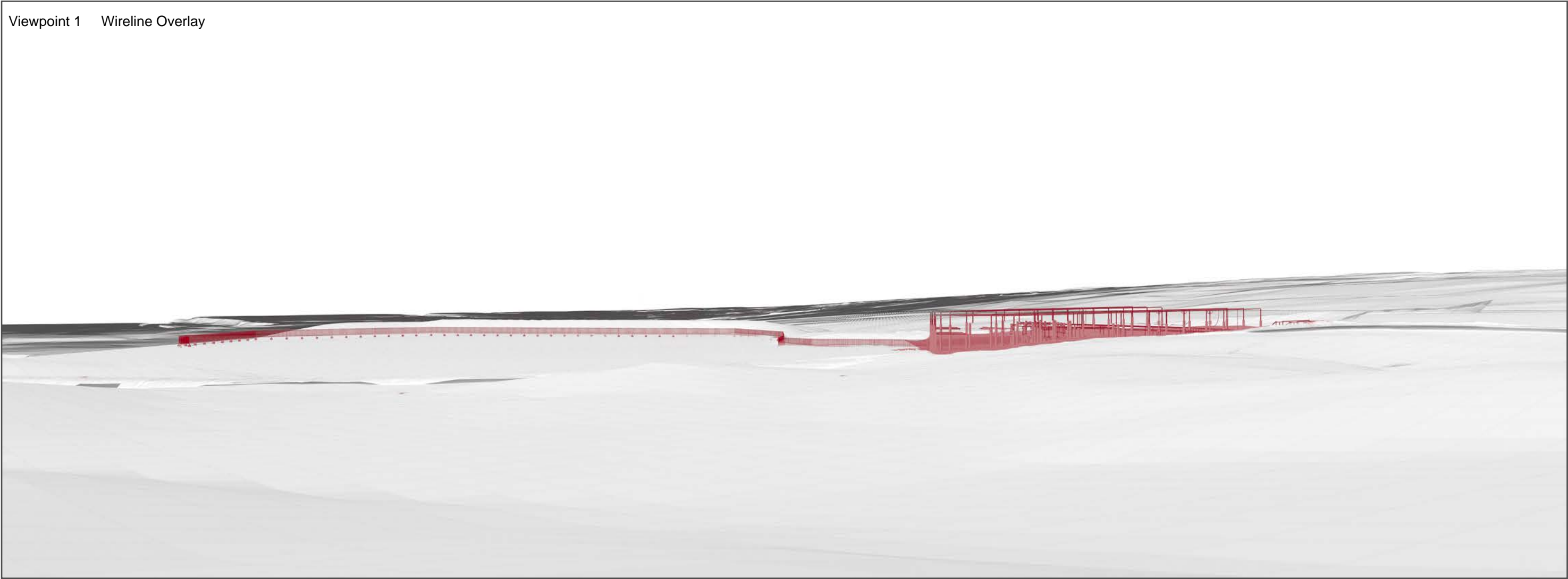
For empirical testing, the wireline image on the next page can be accurately assessed in the field when converted to a transparency. If viewed with one eye at a distance of 300mm from exactly the same location and height as the original camera lens, the image will fit the real landscape cues.

Figure: 1.3



Viewpoint 1 Existing View

Viewpoint 1 Wireline Overlay





Photomontage

Figure: 1.4
Viewpoint 1
Unnamed Road south of the development

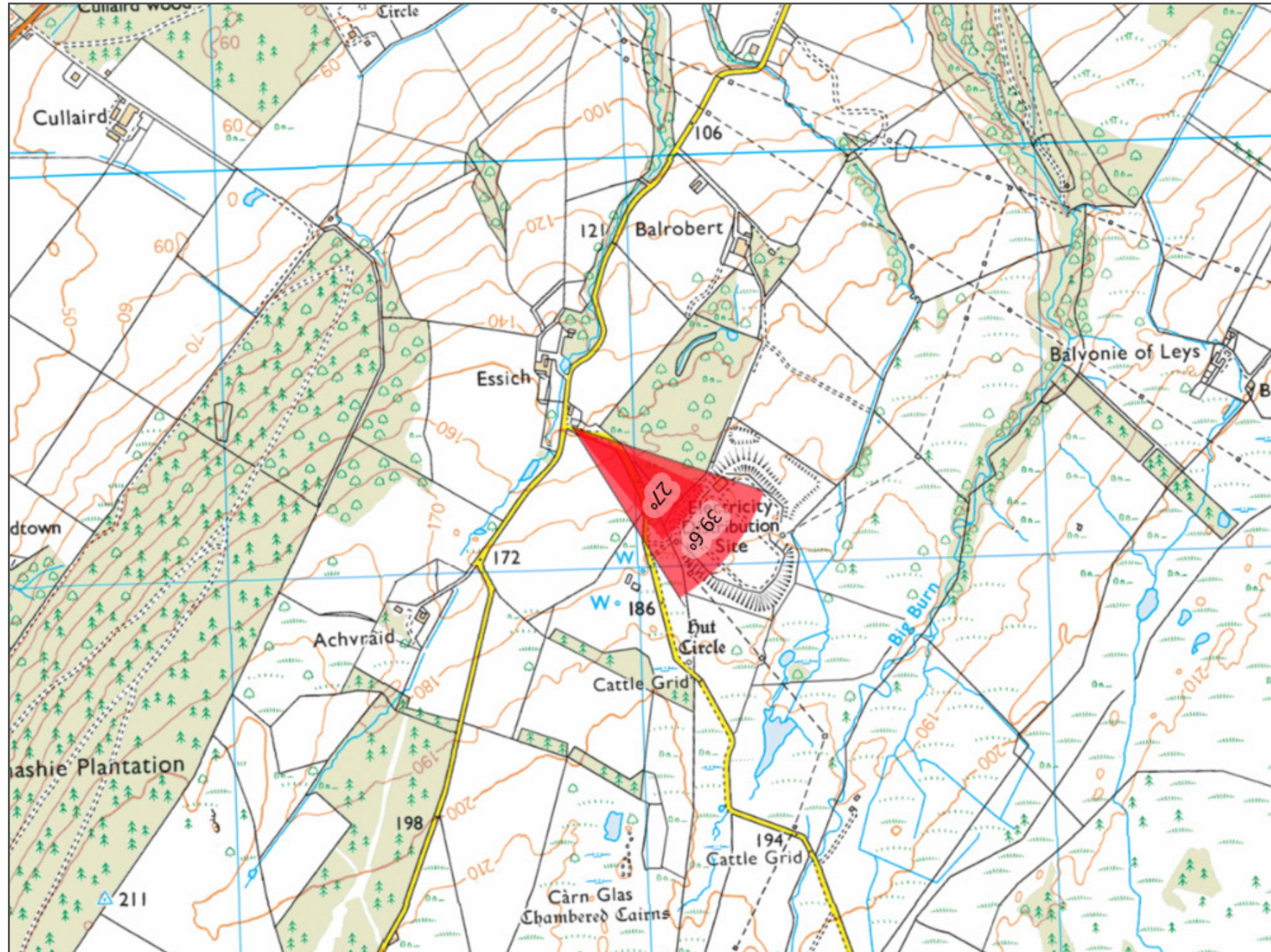
Distance to project 285m

Camera: Canon EOS R5 Focal Length: 50mm

Camera height: 1.5m Date: 01/06/2023 17:15

This image should be viewed at a comfortable arm's length (approx 500mm)

Figure: 2.1 - Viewpoint 3:



Grid Reference: 264843 839343

Distance to project 640m

AOD: 153m

This viewpoint is located approximately 8km south of Inverness

Travel south out of Inverness on A82. Take the first exit at the roundabout to join the A8082. Follow the A8082 through three roundabouts to join Holm Road. Take the third exit on the roundabout onto Essich Road and continue along Essich Road for approx 3km. Turn Left towards Bunachton and Dunlichity. The viewpoint location is beside the junction, on the roadside as shown in the photograph above.



Extent of 50mm single frame image



Figure: 2.2
Viewpoint 3
Unnamed Road northwest of the development

Distance to project 640m Camera: Canon EOS R5 Focal Length: 50mm vertical (27°) x 28mm horizontal (65.5°) Camera height: 1.5m Date: 01/06/2023 20:30

The images contained on this page and the following page are not representative of scale and distance from the actual viewpoint and show the wind farm development in its wider landscape context only.

For empirical testing, the wireline image on the next page can be accurately assessed in the field when converted to a transparency. If viewed with one eye at a distance of 300mm from exactly the same location and height as the original camera lens, the image will fit the real landscape cues.

Figure: 2.3



Viewpoint 3 Existing View

Viewpoint 3 Wireline Overlay





Photomontage - showing no visibility

Figure: 2.4
Viewpoint 3

Distance to project 640m

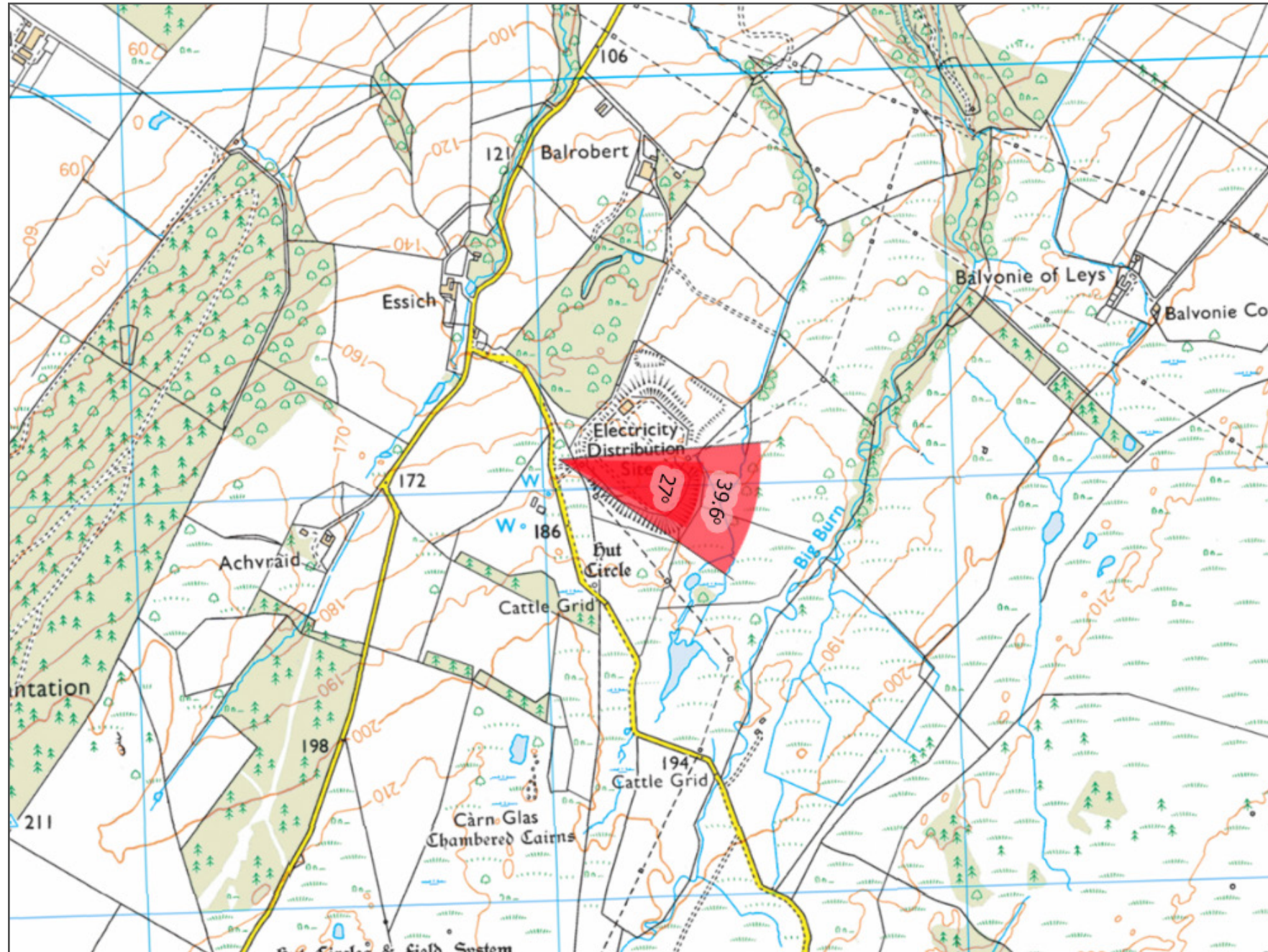
Camera: Canon EOS R5 Focal Length: 50mm

Camera height: 1.5m Date: 01/06/2023 20:30

Unnamed Road northwest of the development

This image should be viewed at a comfortable arm's length (approx 500mm)

Figure: 3.1 - Viewpoint 8:



Grid Reference: 265040 839069

Distance to project 320m

AOD: 179m

This viewpoint is located approximately 8km south of Inverness

Travel south out of Inverness on A82. Take the first exit at the roundabout to join the A8082. Follow the A8082 through three roundabouts to join Holm Road. Take the third exit on the roundabout onto Essich Road and continue along Essich Road for approx 3km. Turn Left towards Bunachton and Dunlichity. Continue for approx 400m. The viewpoint location is on the roadside as shown in the photograph above.

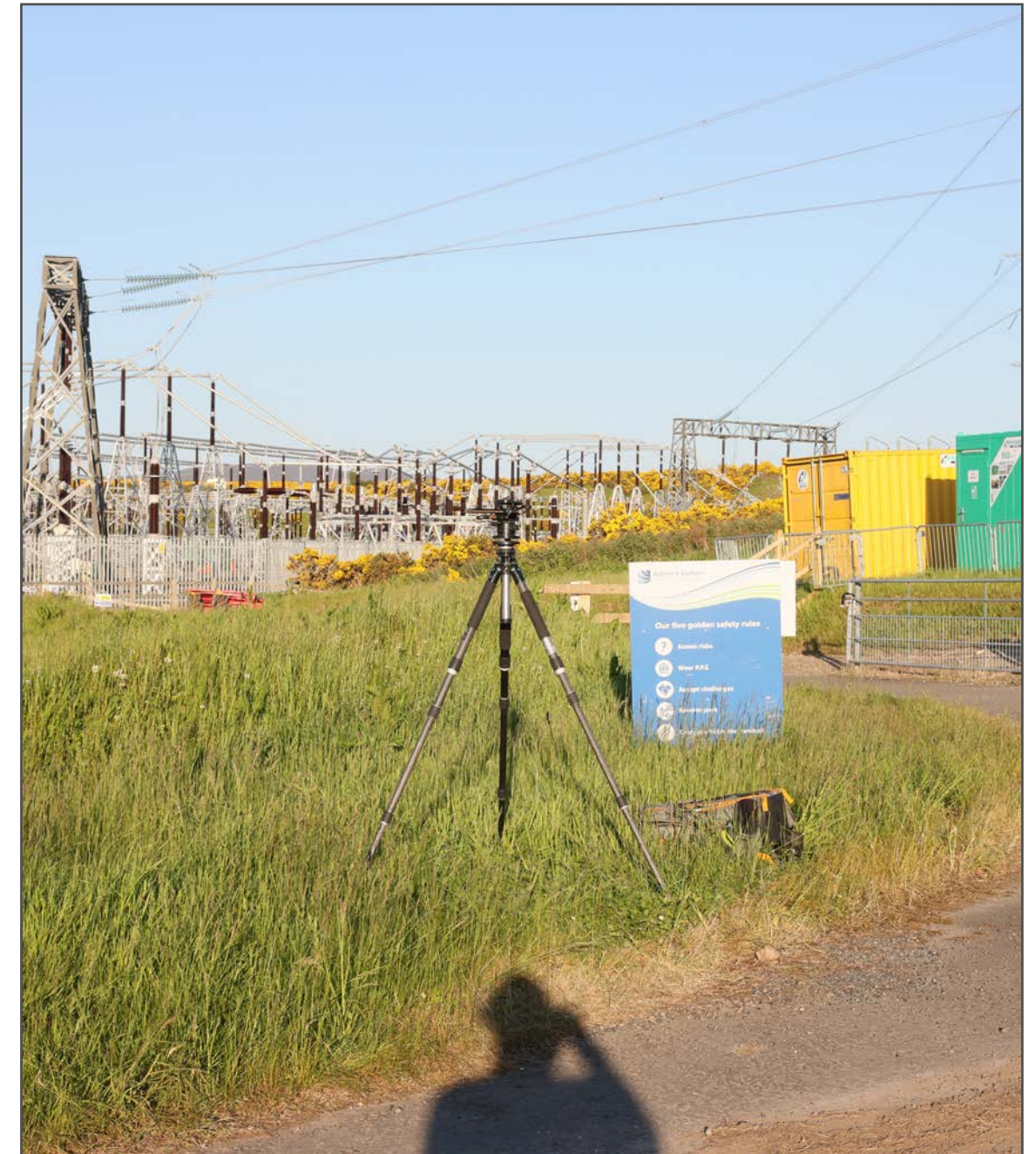




Figure: 3.2
Viewpoint 8
Unnamed Road west of the development

Distance to project 320m Camera: Canon EOS R5 Focal Length: 50mm vertical (27°) x 28mm horizontal (65.5°) Camera height: 1.5m Date: 01/06/2023 20:00

The images contained on this page and the following page are not representative of scale and distance from the actual viewpoint and show the wind farm development in its wider landscape context only.

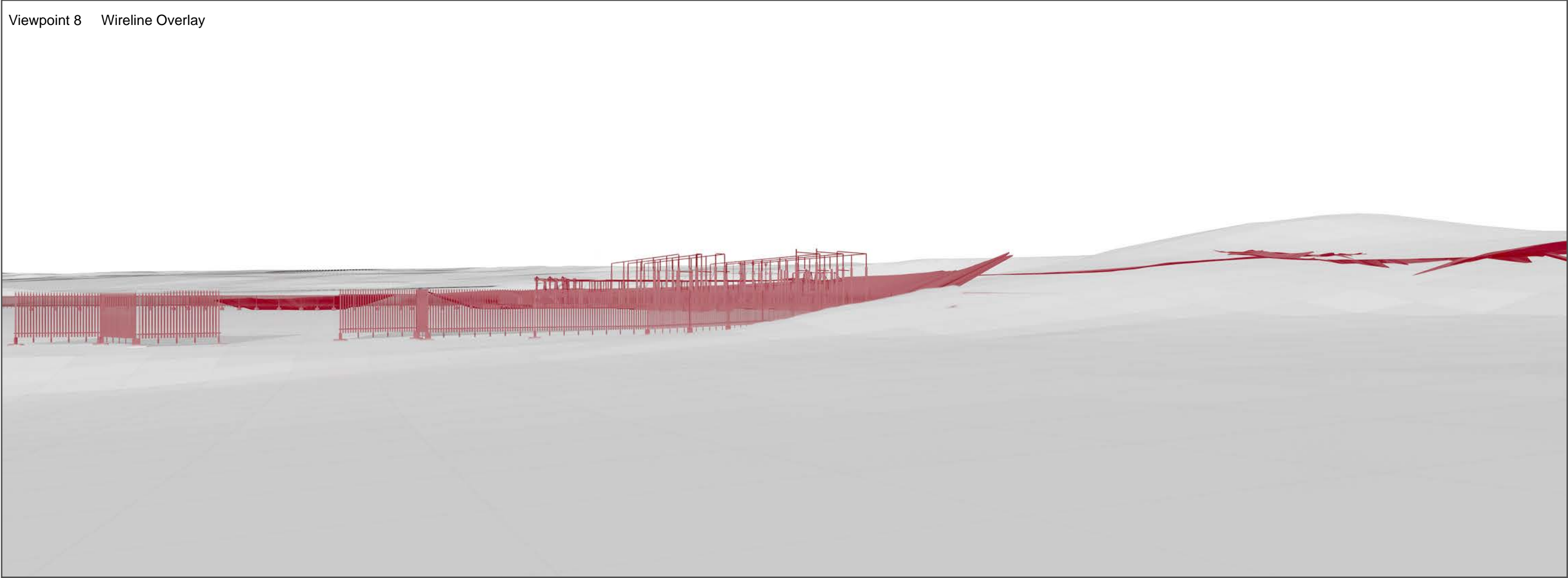
For empirical testing, the wireline image on the next page can be accurately assessed in the field when converted to a transparency. If viewed with one eye at a distance of 300mm from exactly the same location and height as the original camera lens, the image will fit the real landscape cues.

Figure: 3.3



Viewpoint 8 Existing View

Viewpoint 8 Wireline Overlay





Photomontage

Figure: 3.4
Viewpoint 8

Distance to project 320m

Camera: Canon EOS R5

Focal Length: 50mm

Camera height: 1.5m Date: 01/06/2023 20:00

Unnamed Road west of the development

This image should be viewed at a comfortable arm's length (approx 500mm)