

## Legend

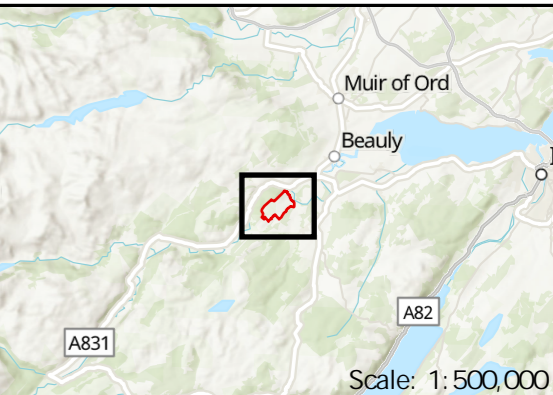
Site Boundary

1 km Buffer

## Superficial Geology

- Till, Devensian - Diamicton
- Hummocky (Moundy) Glacial Deposits
- Glaciofluvial Deposits - Gravel, sand and silt
- River Terrace Deposits - Gravel, sand, silt and clay
- Raised Beach Deposits, 2 - Gravel, sand and silt
- Alluvium - Clay, silt, sand and gravel

NOTE: Ousdale Arkose Formation - Breccia and conglomerate is present in the 1km buffer of PD and PDW



Reproduced by permission of Ordnance Survey. Crown copyright and database right 2023 all rights reserved. Ordnance Survey Licence number 0100322432. Contains public sector information licensed under the Open Government Licence v3.0. SSSEN Transmission take no responsibility for the release or accuracy of latest version Basemaps from Ordnance Survey

Project No: LT000459

Project: Fanellan 400kV Substation and Converter Station

Title:

Figure 13.1 - Superficial Geology

Drawn by: SH

26/02/2025

Drawing: 70112533-WSP-DR-DA-008