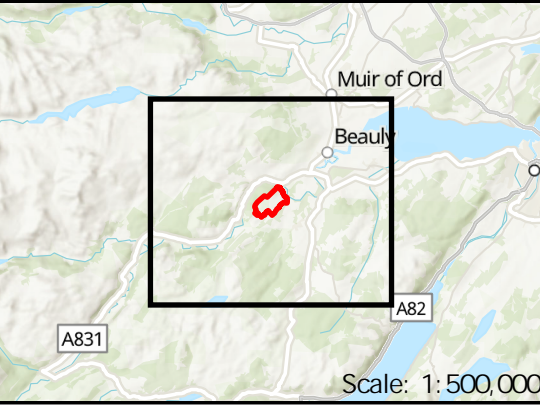


Legend

- Site Boundary
- Fanellan 400kV Substation & Converter Station – Development Platform
- Distance from the Site Boundary
- Zone of Theoretical Visibility - Fanellan 400kV Substation & Converter Station

Note:

- 1) This drawing shows the theoretical visibility of a structure 27.5m high occupying a development platform at 127m AOD (marked in blue) taking into account the screening provided by woodland and built form. The assumed viewer eye height is 2m above ground level. As a 'with screening' ZTV this can be considered to present the 'best-case' scenario.
- 2) The terrain model is a combination of a 2m LiDAR Digital Surface Model and OS Terrain 5 data. The LiDAR models the ground surface where there are no upstanding objects but includes the top surface of objects such as trees and buildings. To avoid 'false screening' from the LiDAR modelling existing overhead lines a 10m strip around these has been clipped and replaced with the bare ground terrain model. Similarly, everything within the Site has been removed from the model to allow for potential site clearance works. The ZTV raster has been refined for accuracy using the Scottish National Woodland Inventory and OS Mastermap to exclude views from tree canopies and building tops.
- 3) Earth curvature and atmospheric refraction have been taken into account.



Reproduced by permission of Ordnance Survey. Crown copyright and database right 2023 all rights reserved. Ordnance Survey Licence number 0100022432. SSSEN Transmission take no responsibility for the release or accuracy of latest version Basemaps from Ordnance Survey Digital Surface Model – © Bluesky International Limited

Project No:	LT000459
Project:	Fanellan 400kV Substation and Converter Station
Title:	Figure 8.3 - Screening ZTV
Drawn by:	MAL
	26/02/25
Drawing:	70112533-WSP-DR-DA-012